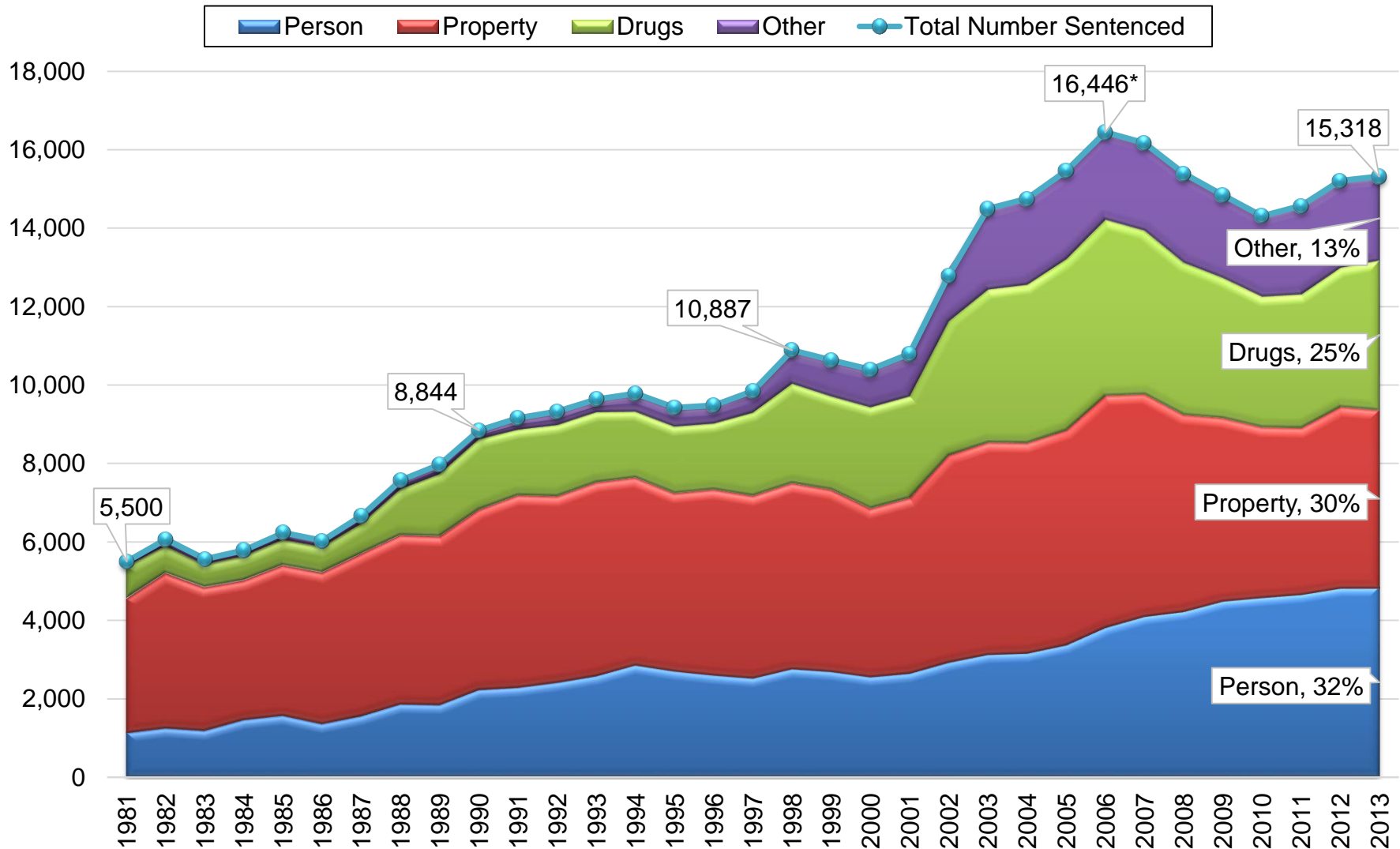

2013 MONITORING DATA: SENTENCING PRACTICES DATA SUMMARY

Minnesota Sentencing Guidelines Commission

September 18, 2014

Number and Volume of Offenders Sentenced by Offense Type: 1981-2013



Percent Change by Offense Type: 1999-2013

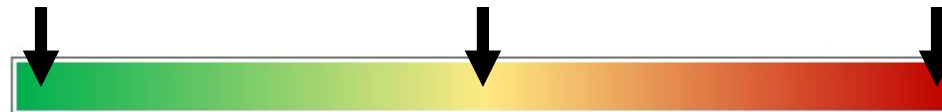
(Felony DWI and Non-Person Sex Offenses Separated From “Other”)

	1999	2000	2001	2002	2003	2004	2005	2006	2007	2008	2009	2010	2011	2012	2013
All Offenses	-2.3%	-2.2%	3.9%	20.2%	11.7%	1.8%	4.8%	6.4%	-1.7%	-4.8%	-3.6%	-3.6%	1.8%	4.4%	0.7%
Person	-2.5%	-5.1%	3.6%	10.6%	6.8%	0.9%	6.8%	13.1%	7.3%	3.0%	6.2%	2.0%	1.7%	3.5%	-0.1%
Property	-2.1%	-7.4%	4.2%	17.9%	2.3%	-0.9%	2.0%	7.9%	-4.2%	-11.5%	-7.0%	-6.8%	-2.4%	8.8%	-1.7%
Drug	-5.9%	8.6%	0.0%	31.9%	13.8%	3.5%	8.1%	2.7%	-7.1%	-6.9%	-7.7%	-7.0%	2.5%	4.2%	7.6%
Other	7.8%	4.2%	13.9%	15.7%	0.7%	6.9%	6.6%	2.3%	3.5%	-0.3%	-6.2%	-2.7%	17.1%	-2.8%	2.0%
Other (Felony DWI*)						6.2%	-3.0%	-5.5%	-7.2%	-6.0%	-9.6%	-5.3%	-1.0%	-4.4%	-19 %
Other (Non-Person Sex Offenses**)												3.1%	9.9%	4.0%	4.6%

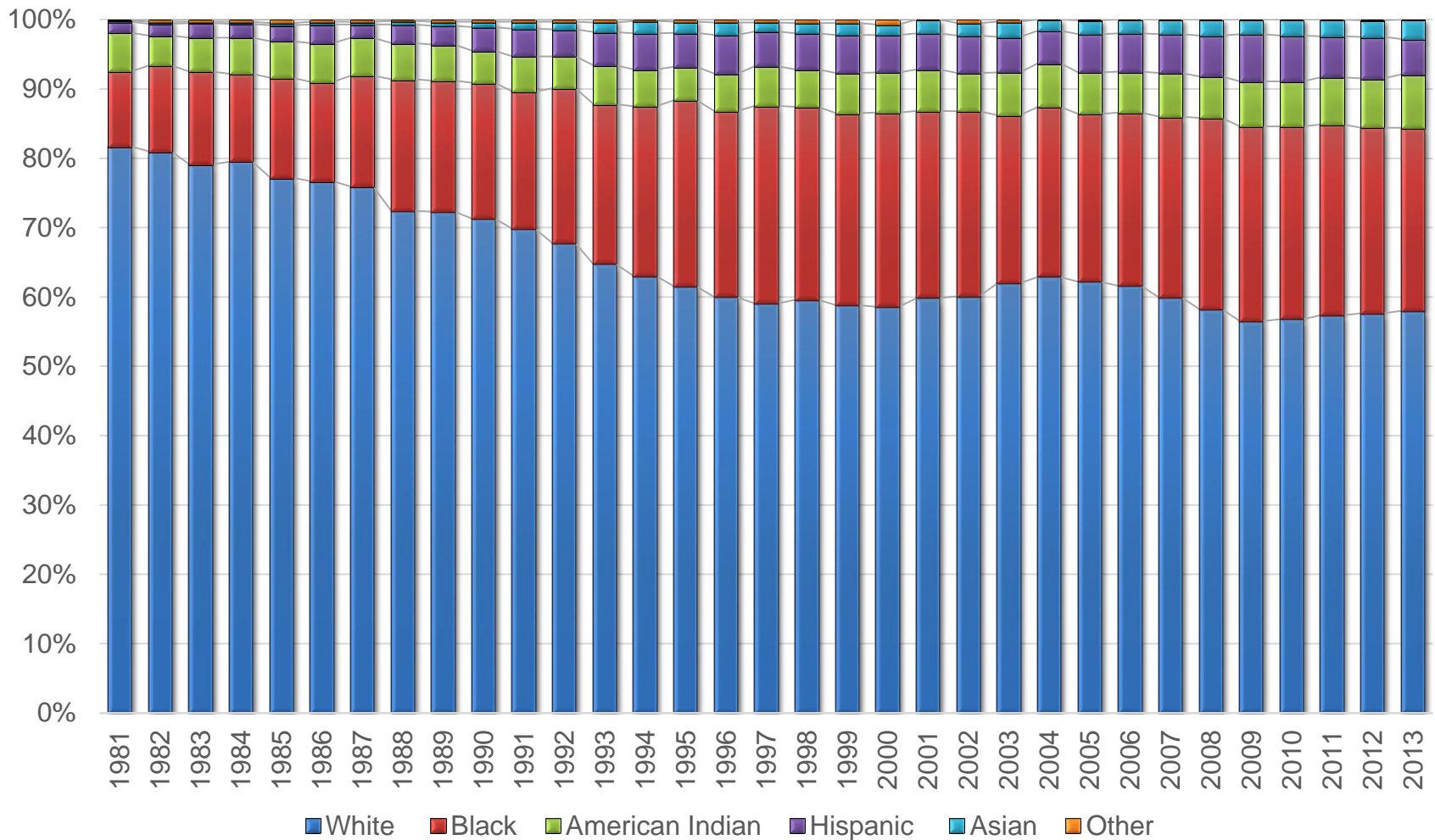
Negative Percent Change

No Change

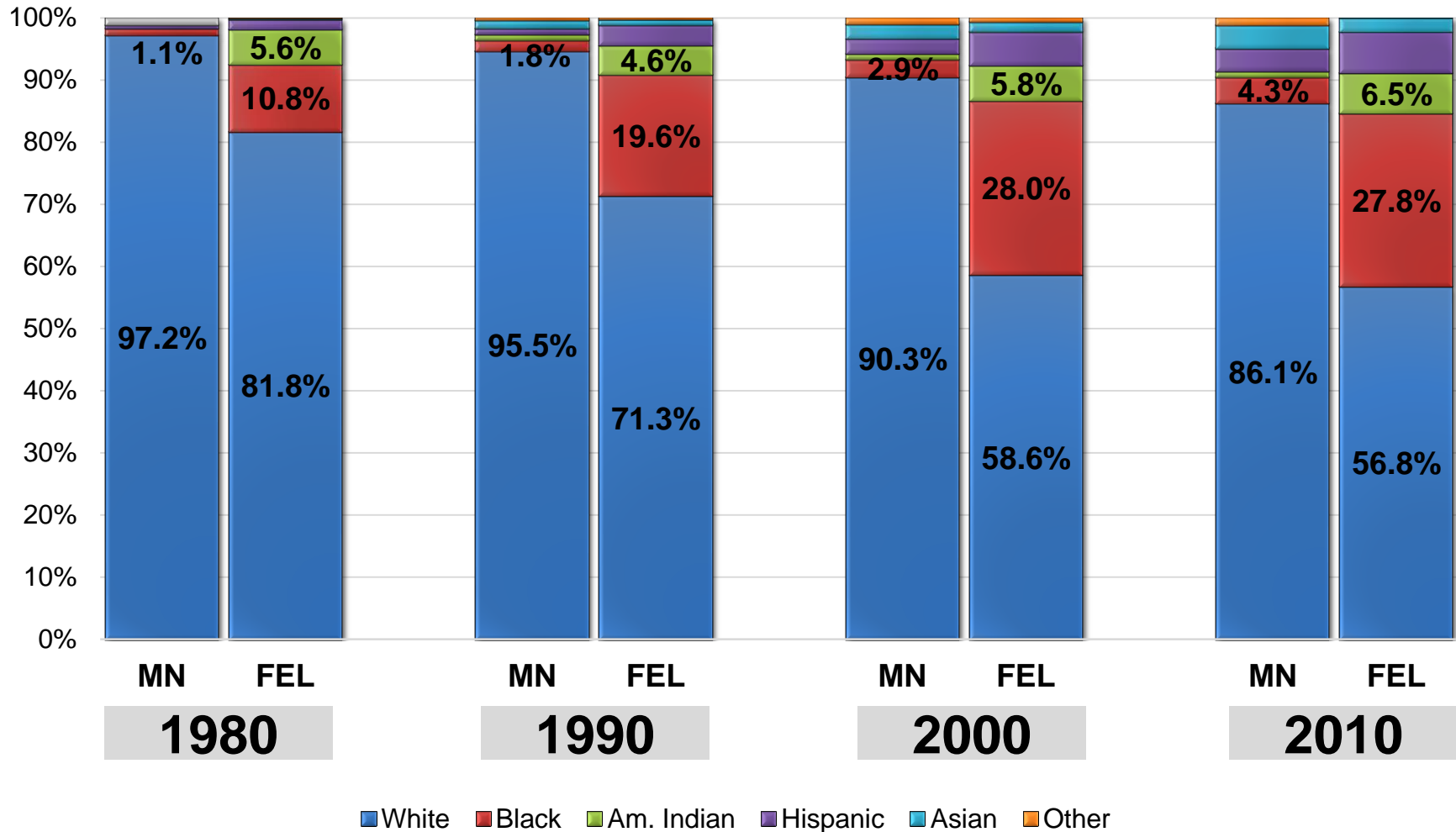
Positive Percent Change



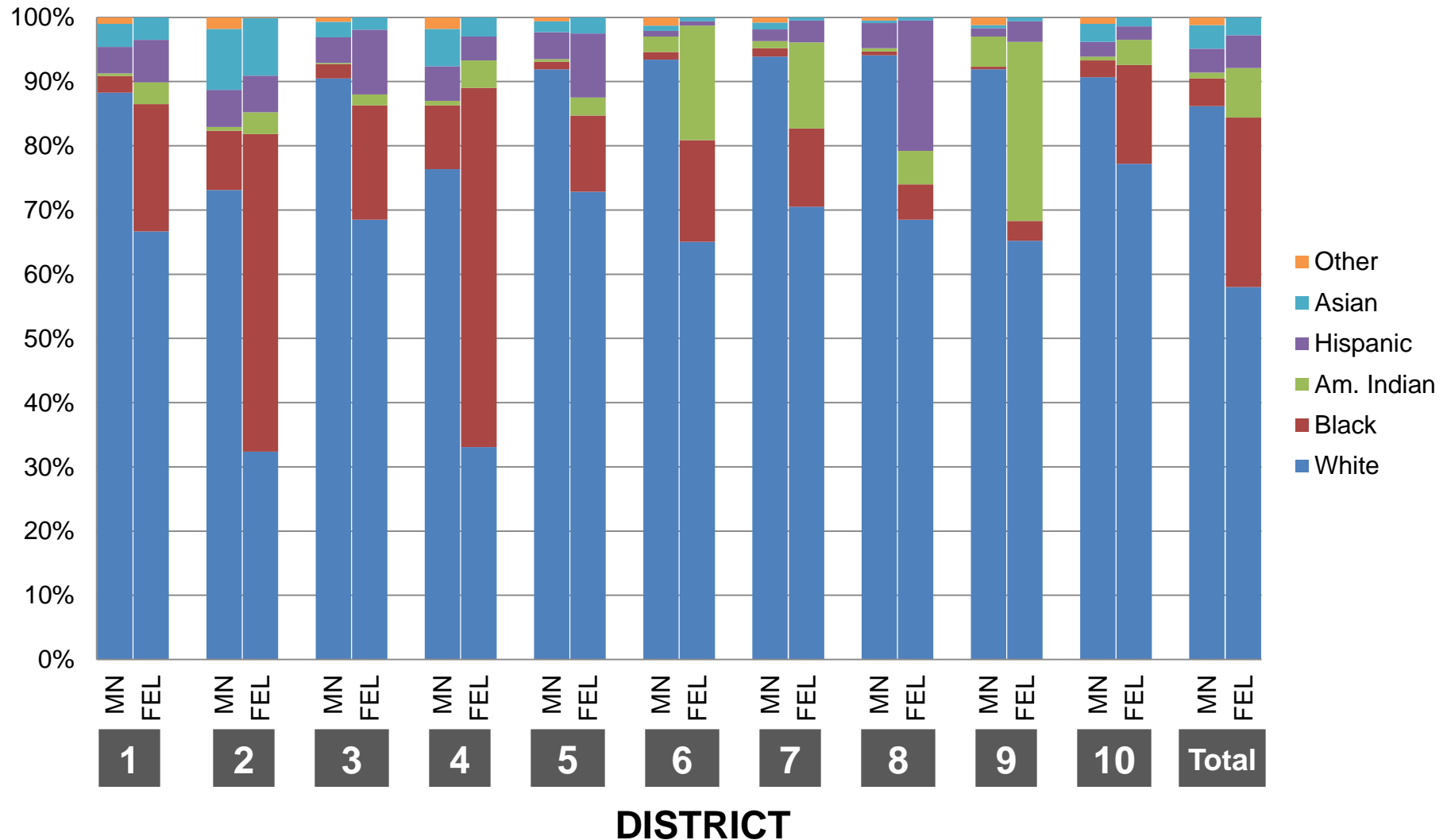
Distribution of Felony Offenders by Race: 1981-2013



Distribution of Felony Offenders by Race: Comparison to Distribution of MN Population

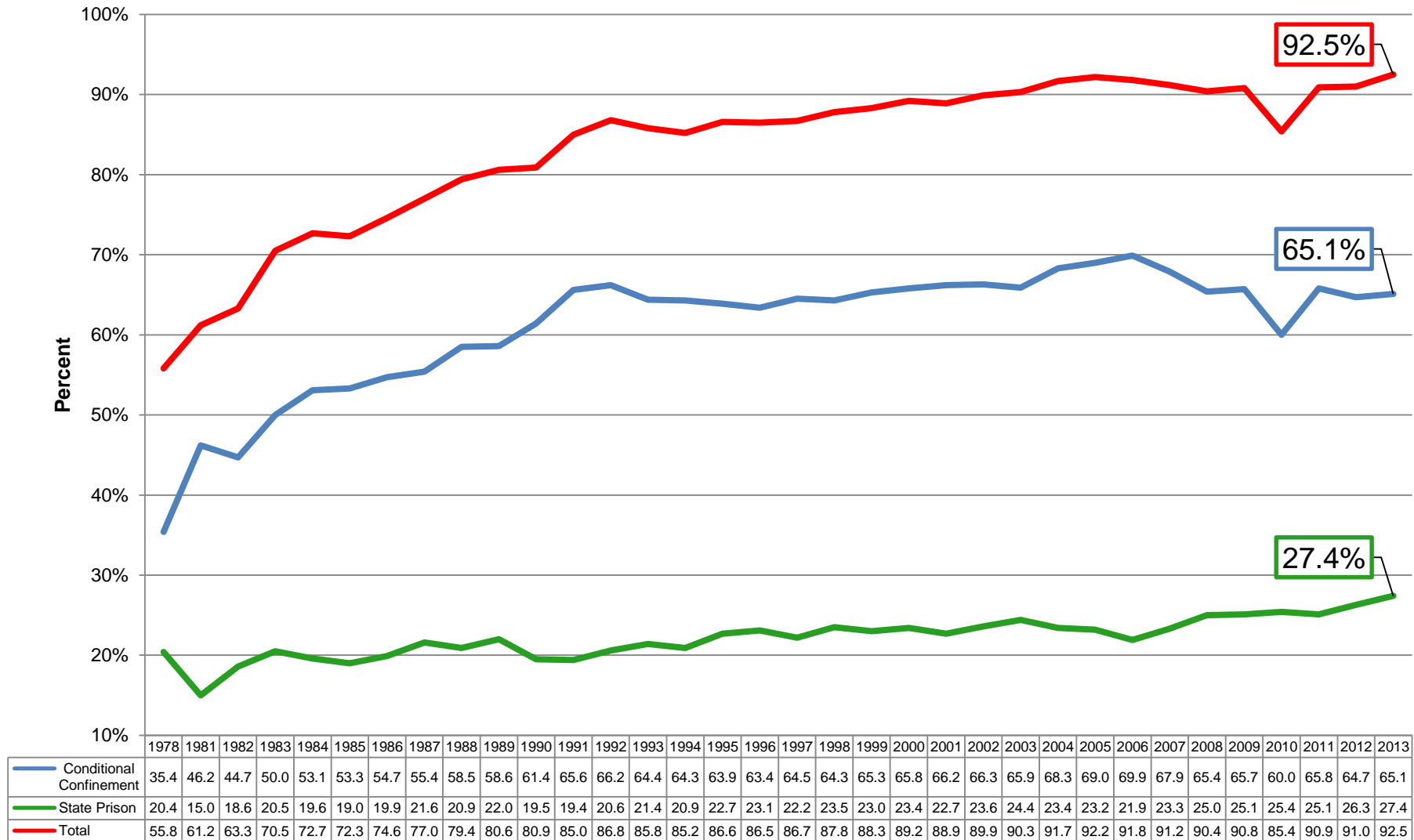


Distribution of Felony Offenders by Race and Judicial District: Comparison to Distribution of MN Population*



*Represents 2010 U.S. census data: distribution of Minnesota population 18 yrs. and older by race and MN judicial district.

Overall Incarceration Rates: 1978, 1981-2013



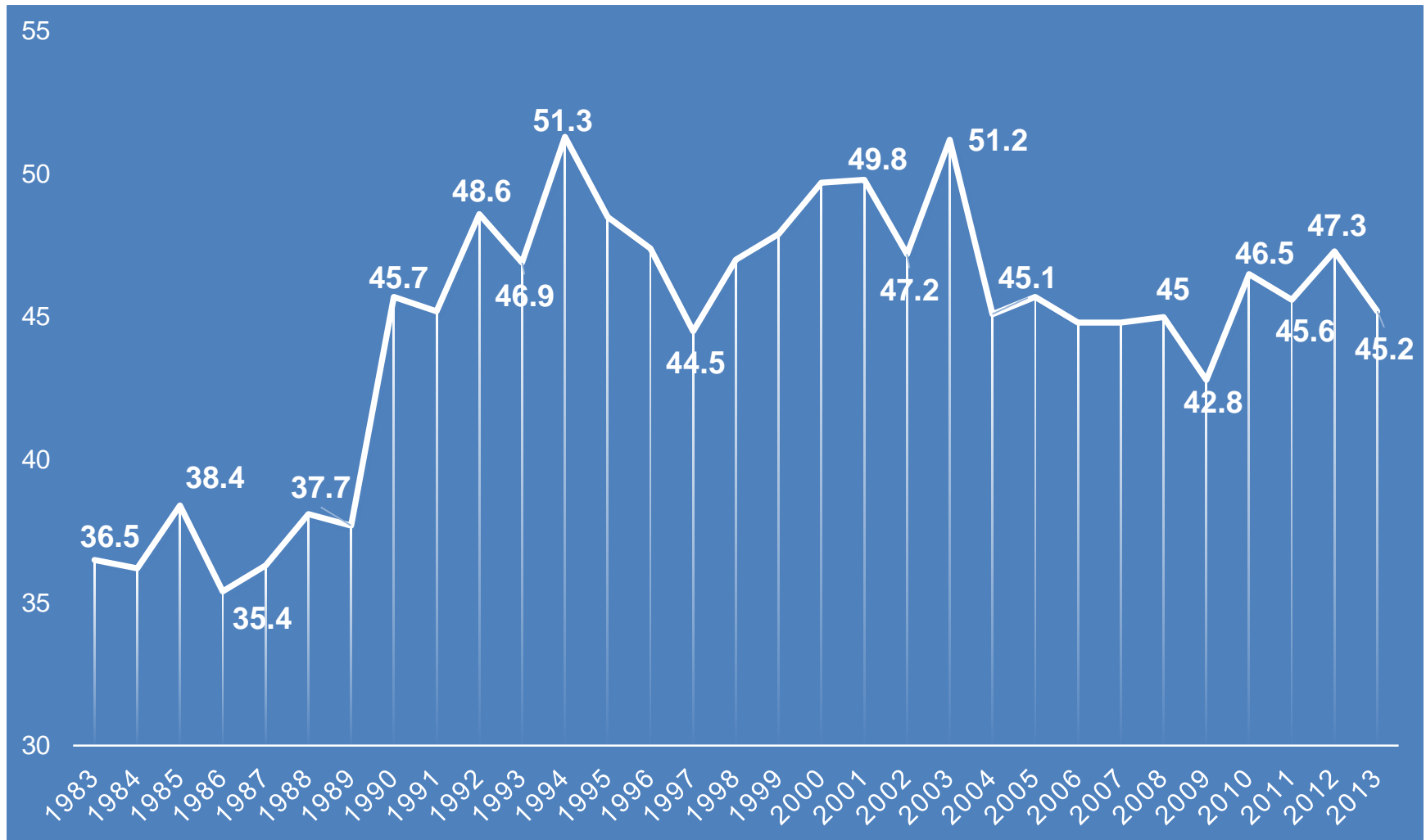
Total Incarceration Rates by Gender and Race

		Total Cases	Total Incarceration		Prison		Conditional Confinement	
Gender	Male	12,797	11,952	93.4%	3,875	30.3%	8,077	63.1%
	Female	2,521	2,220	88.1%	318	12.6%	1,902	75.4%
Race/ Ethnicity	White	8,884	8,110	91.3%	2,092	23.5%	6,018	67.7%
	Black	4,050	3,845	94.9%	1,398	34.5%	2,447	60.4%
	American Indian	1,177	1,078	91.6%	339	28.8%	739	62.8%
	Hispanic	780	731	93.7%	260	33.3%	471	60.4%
	Asian	426	407	95.5%	104	24.4%	303	71.1%
	Other/ Unknown	1	1	100.0%	0	0.0%	1	100.0%
Overall		15,318	14,712	92.5%	4,193	27.4%	9,979	65.1%

Total Incarceration Rates by Judicial District

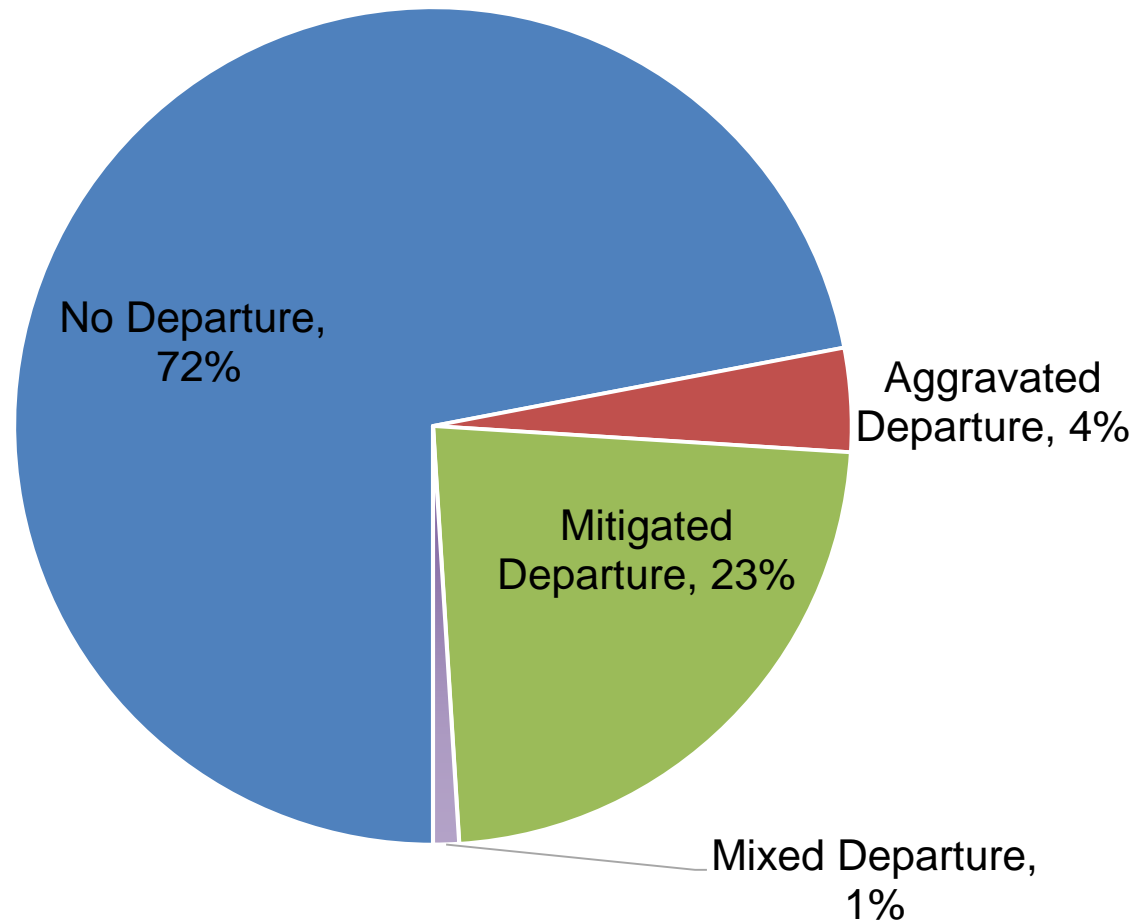
Judicial District	Total Cases	Total Incarceration		Prison		Conditional Confinement	
First	1,806	1,667	92.3%	375	20.8%	1,292	71.5%
Second	1,925	1,916	99.5%	641	33.3%	1,275	66.2%
Third	1,333	1,110	83.3%	375	28.1%	735	55.1%
Fourth	2,983	2,747	92.1%	931	31.2%	1,816	60.9%
Fifth	763	707	92.7%	163	21.4%	544	71.3%
Sixth	964	828	85.9%	226	23.4%	602	62.4%
Seventh	1,543	1,499	97.1%	469	30.4%	1,030	66.8%
Eighth	384	367	95.6%	104	27.1%	263	68.5%
Ninth	1,407	1,209	85.9%	392	27.9%	817	58.1%
Tenth	2,210	2,122	96.0%	517	23.4%	1,605	72.6%
Overall	15,318	14,172	92.5%	4,193	27.4%	9,979	65.1%

Avg. Pronounced Prison Sentence (in months)



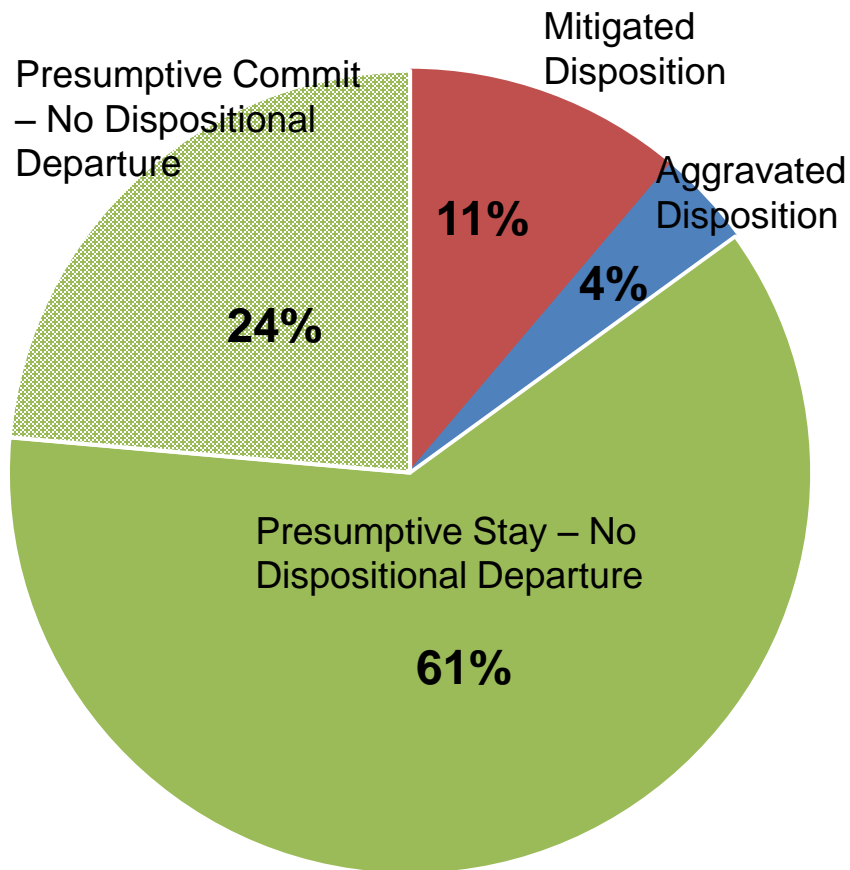
Overall Departure Rates

(Combined Dispositional and Durational)

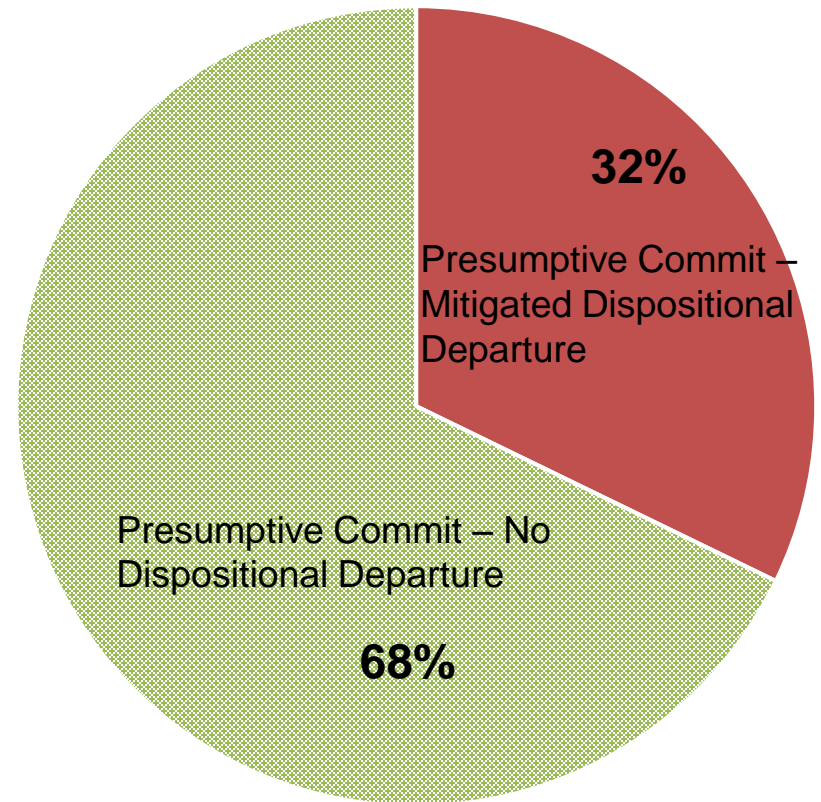


Dispositional Departure Rates

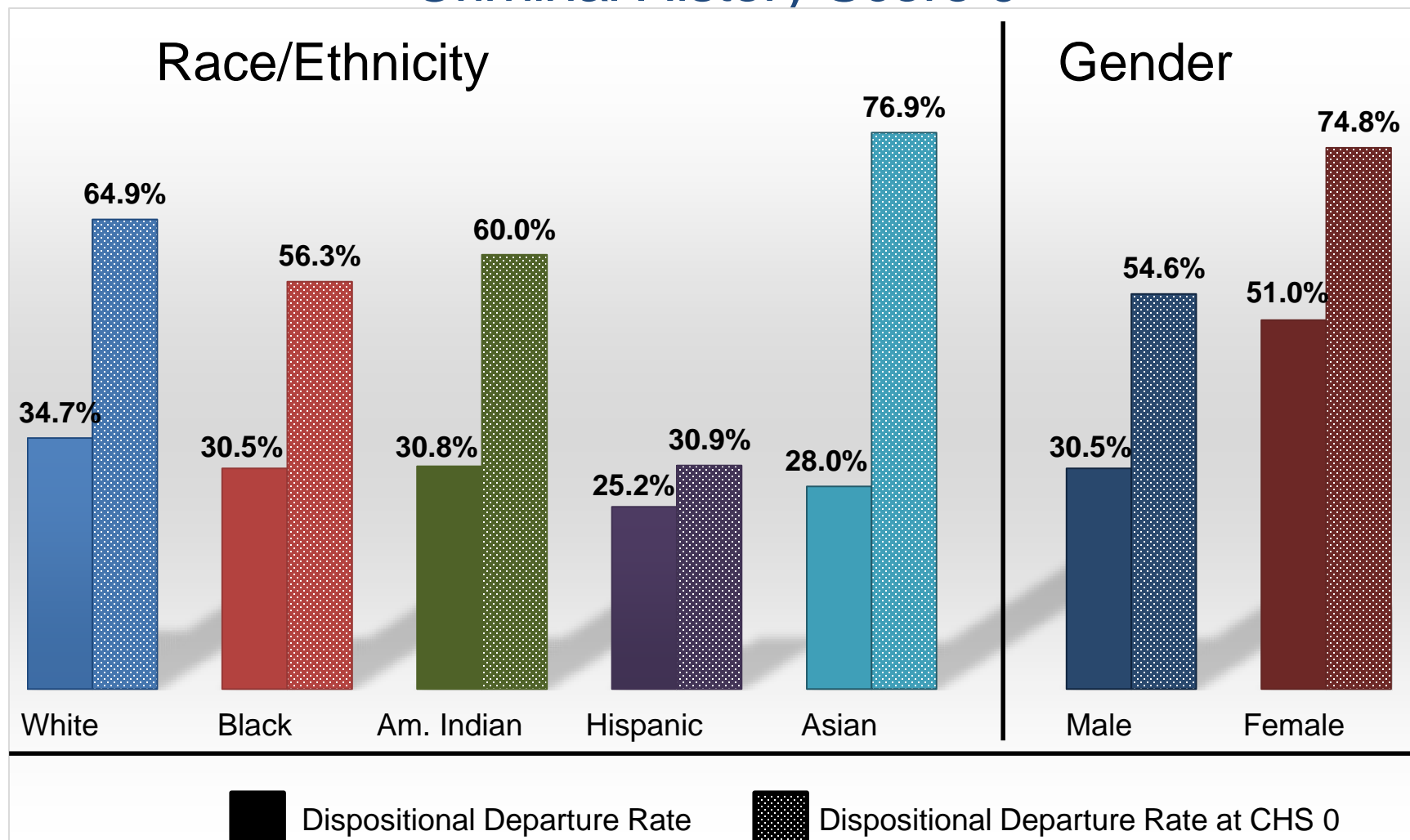
Dispositional Departure Rates:
All Cases



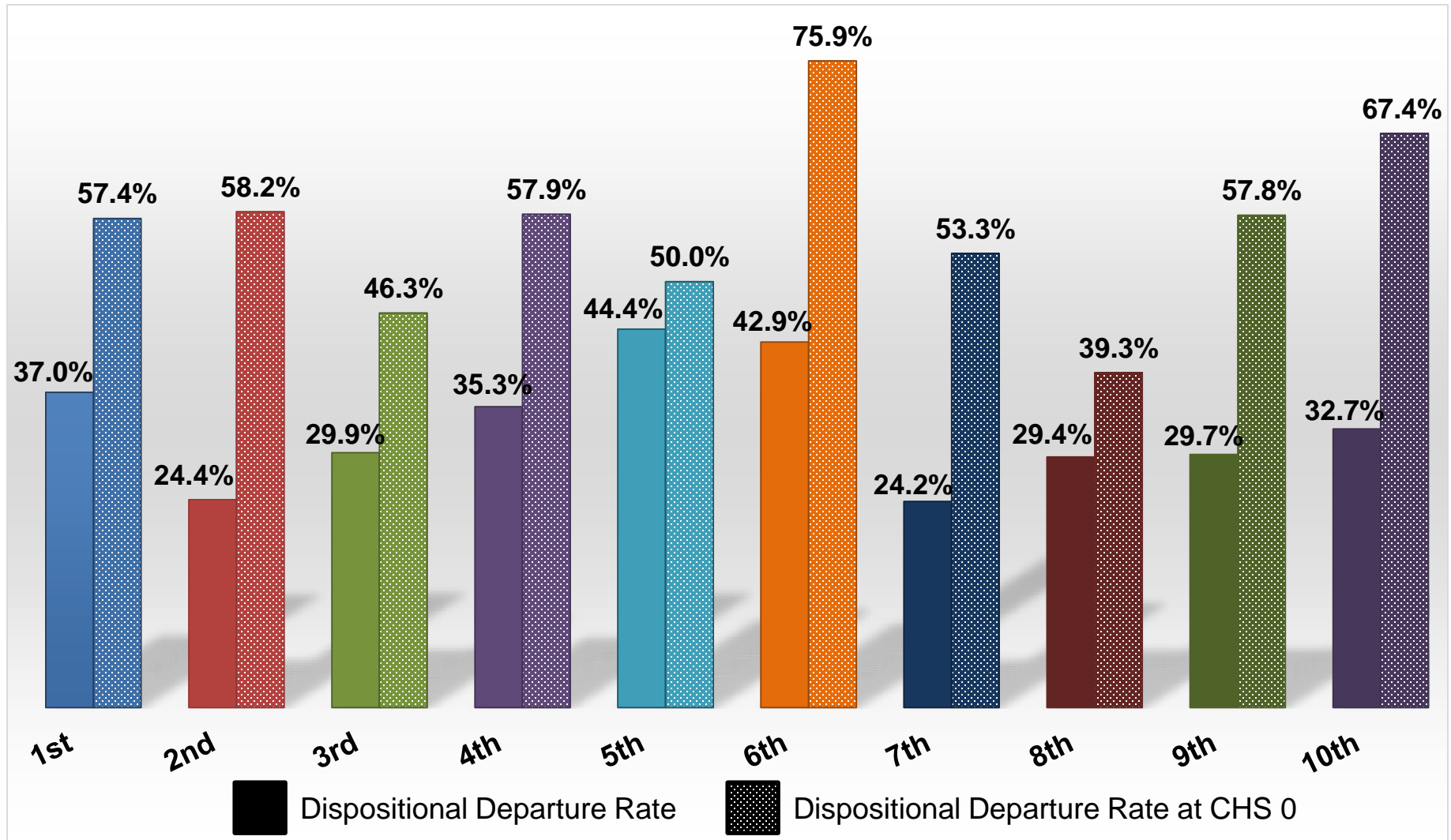
Dispositional Departure Rates:
Presumptive Commitments Only



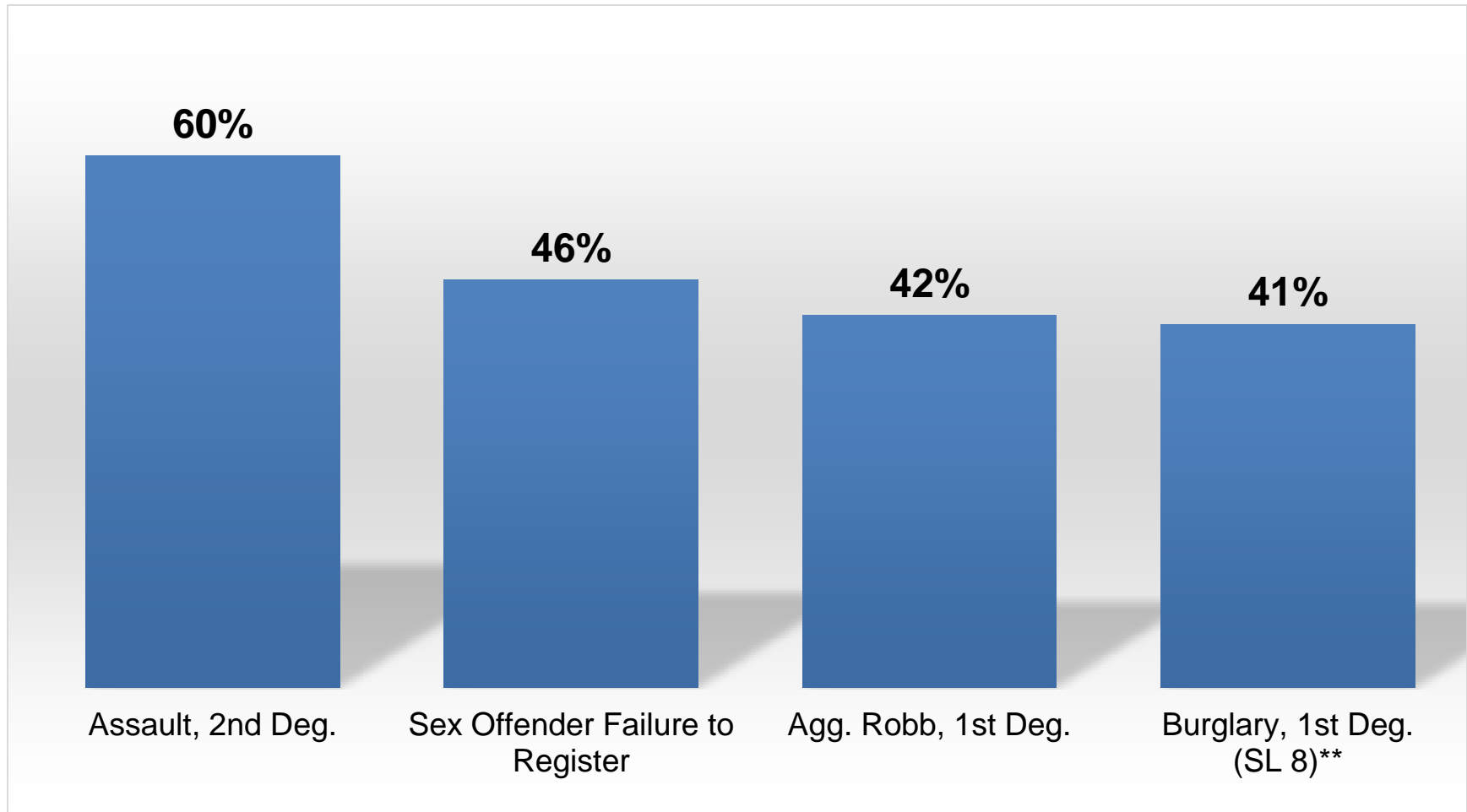
Dispositional Departure Rates for Presumptive Commitment Cases by Race and Gender: Criminal History Score 0



Dispositional Departure Rates for Presumptive Commitment Cases by Judicial District: Criminal History Score 0



High Mitigated Dispositional Departure Rates for Selected Offenses*



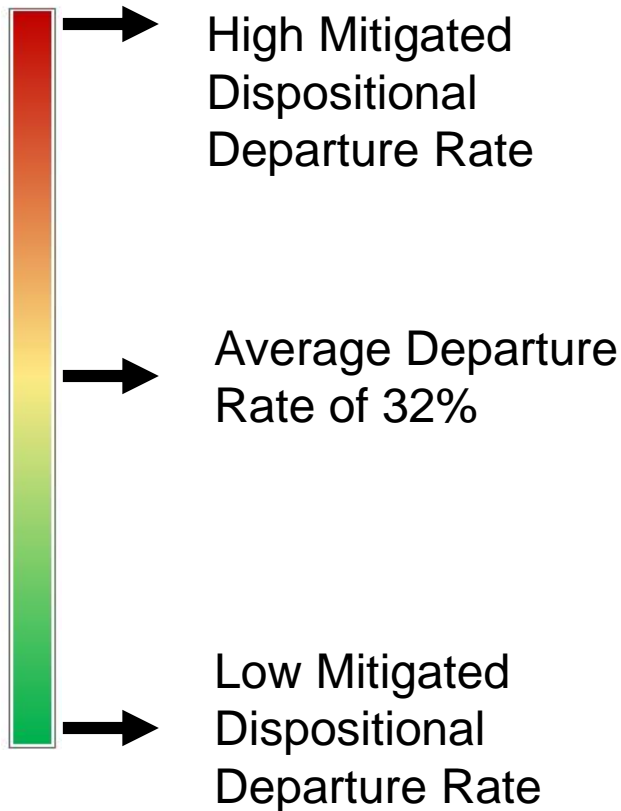
*Offenses that have 50 or more presumptive commitment cases and a mitigated dispositional departure rate over 40%.

** Burglary with assault or dangerous weapon.

Dispositional Departure Rates by Cell on Standard Grid

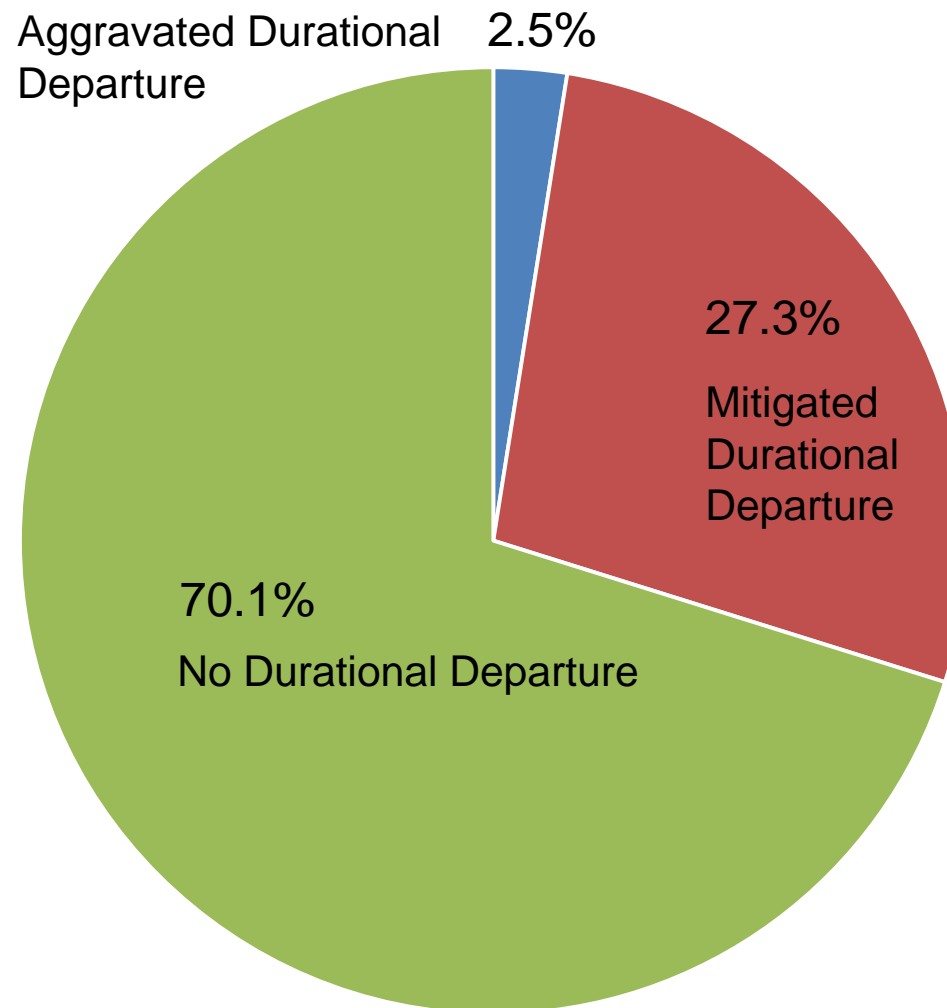
(Presumptive Commitments Only: Sentenced 2011-2013)

Departure Rate Color Scale

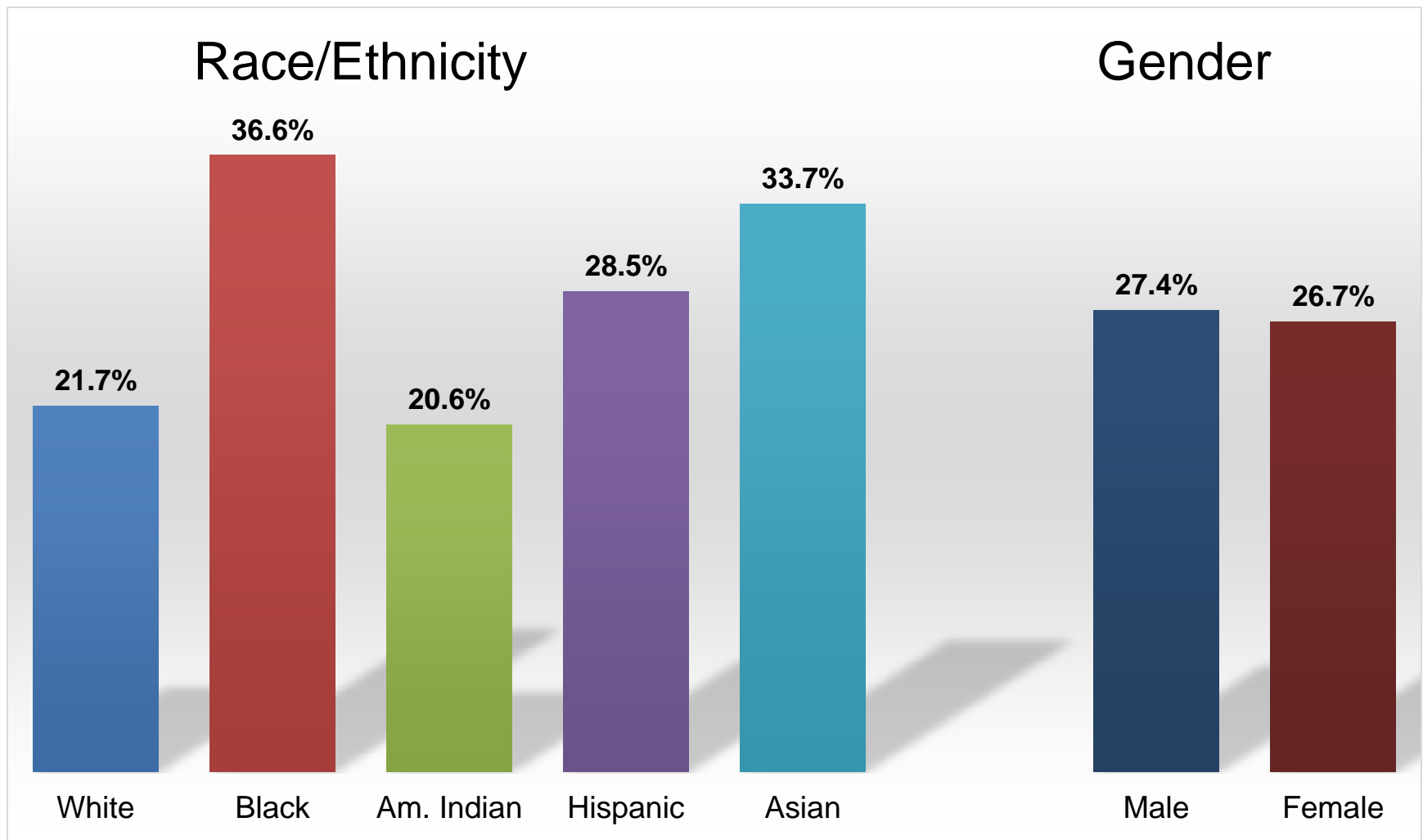


		CRIMINAL HISTORY SCORE						
		0	1	2	3	4	5	6+
SEVERITY LEVEL	11	2.3%						
	10	2.8%						
	9	48.4%	38.4%	20.0%	18.4%	8.6%	15.6%	12.2%
	8	62.3%	36.7%	23.8%	19.4%	12.9%	8.3%	9.2%
	7		70.0%	40.8%	40.9%	24.5%	27.6%	25.8%
	6	74.1%	51.1%	38.1%	27.6%	22.1%	18.1%	12.2%
	5				33.7%	31.8%	15.8%	13.6%
	4					37.2%	24.4%	20.9%
	3					39.8%	27.3%	16.0%
	2							28.9%
	1							25.5%

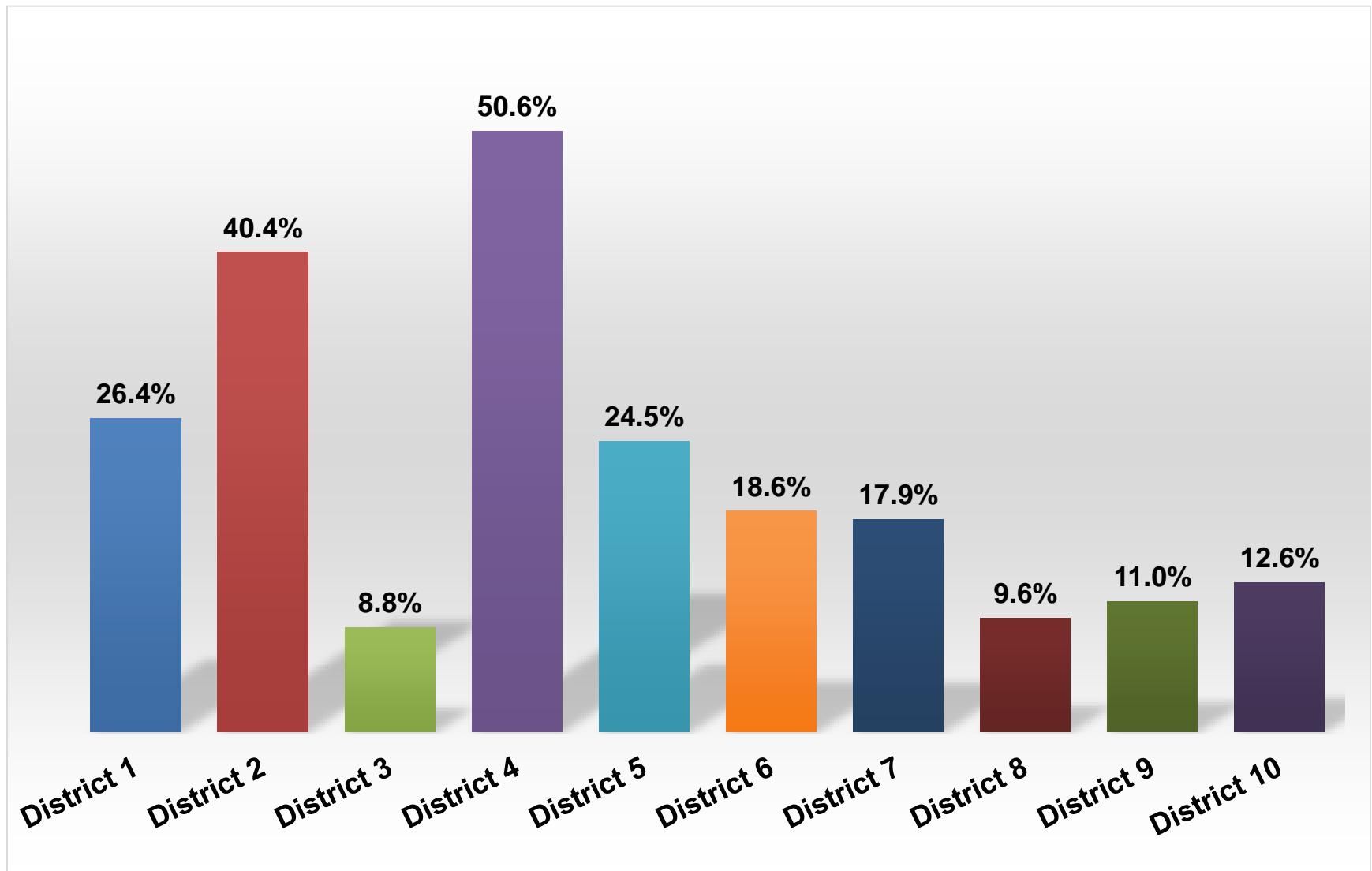
Durational Departure Rates: Executed Prison Sentences Only



Mitigated Durational Departure Rates for Executed Prison Sentences by Race and Gender

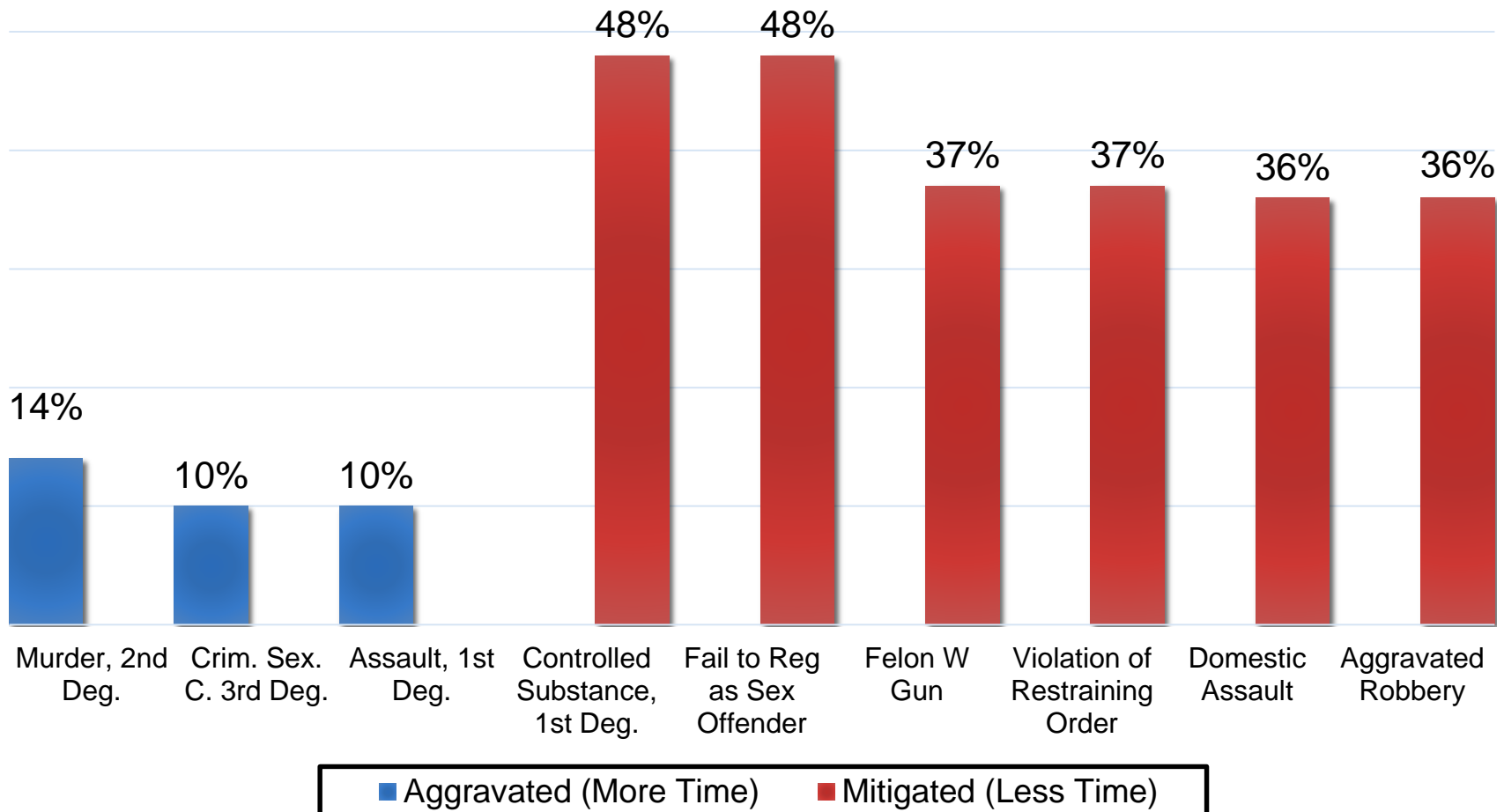


Mitigated Durational Departure Rates for Executed Prison Sentences by Judicial District



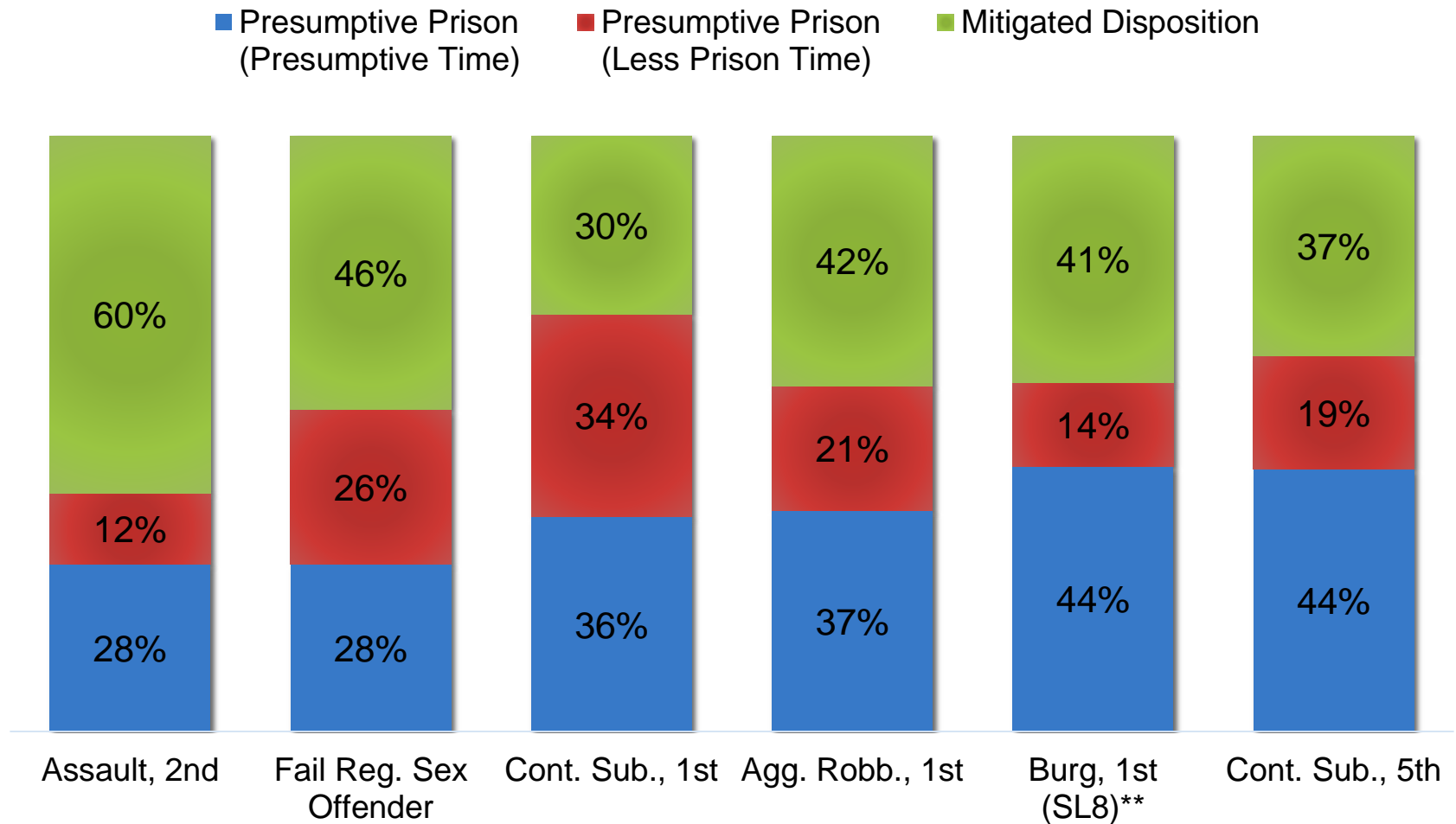
High Durational Departure Rates for Selected Offenses*

(Executed Prison Sentences Only)



*Offenses with at least 45 executed prison cases with the highest durational departure rates.

High Departure Rates For Selected Offenses*



*Offenses with 50 or more cases that have a combined higher than average mitigated departure rate.

** Burglary with assault or dangerous weapon.

MINNESOTA SENTENCING GUIDELINES COMMISSION

mn.gov/sentencing-guidelines