

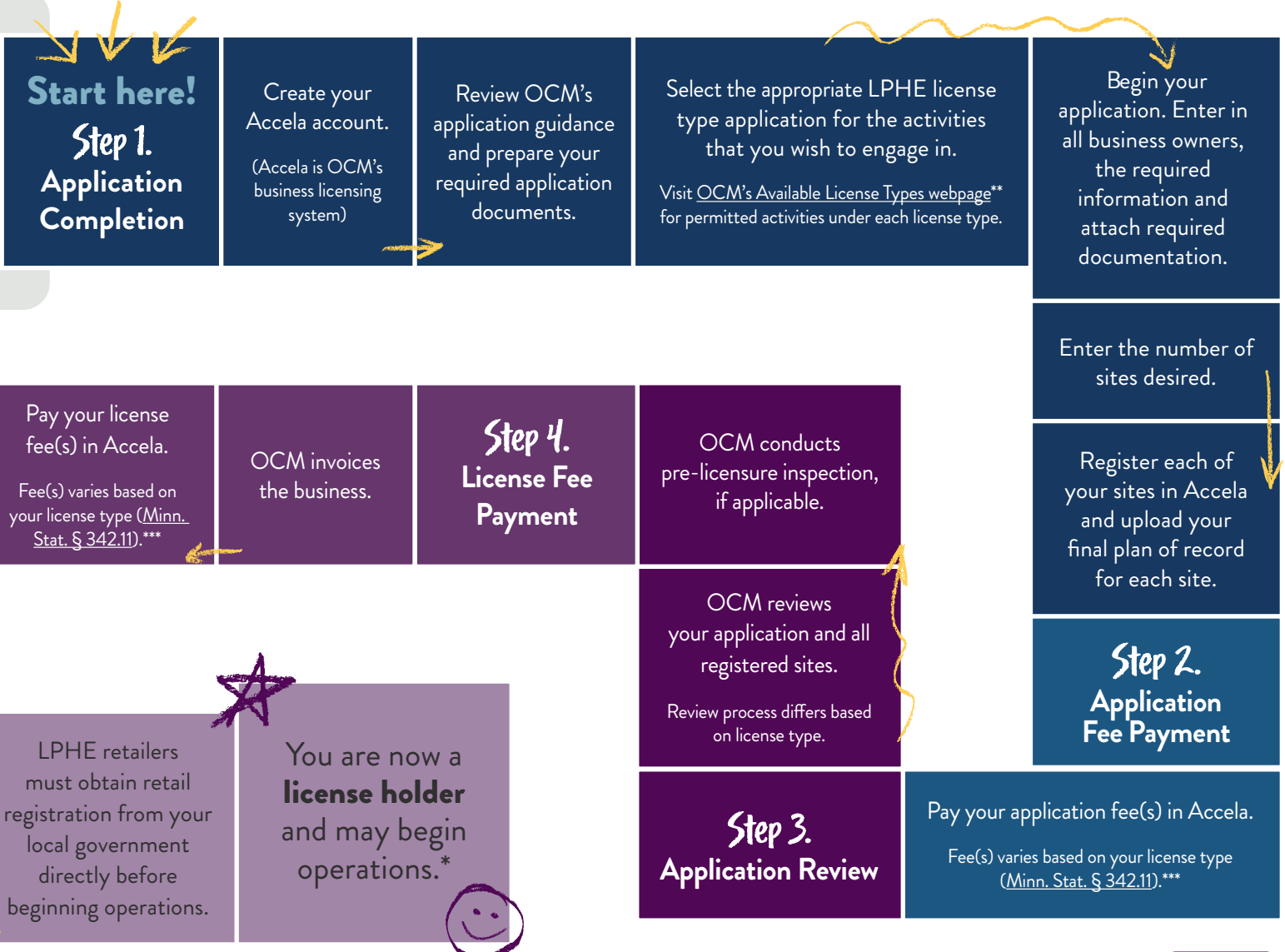
# From Start to License: Your Path to Lower-Potency Hemp Licensing in Minnesota



## Before you begin:

**Multiple license types require multiple applications.** Follow this path for each lower-potency hemp edible (LPHE) license type for which you apply.

**Engage with your local government.** Businesses are responsible for ensuring compliance with local regulations and zoning. Prepare for the local retail registration process.\*



\*For LPHE retailers, you must obtain retail registration from your local government directly (in addition to your license) before selling LPHEs. Local governments can only issue local retail registration once you have been issued a license from OCM. Local governments may not limit the number of local retail registrations they issue to LPHE retailers.

\*\* You can find OCM's Available License Types webpage at [mn.gov/ocm/businesses/licensing/license-types.jsp](https://mn.gov/ocm/businesses/licensing/license-types.jsp).

\*\*\* LPHE retailer fees are per retail site. You can find more information on fees at [revisor.mn.gov/statutes/cite/342.11](https://revisor.mn.gov/statutes/cite/342.11).

Learn more about the licensing process at

[mn.gov/ocm/businesses/licensing](https://mn.gov/ocm/businesses/licensing)

