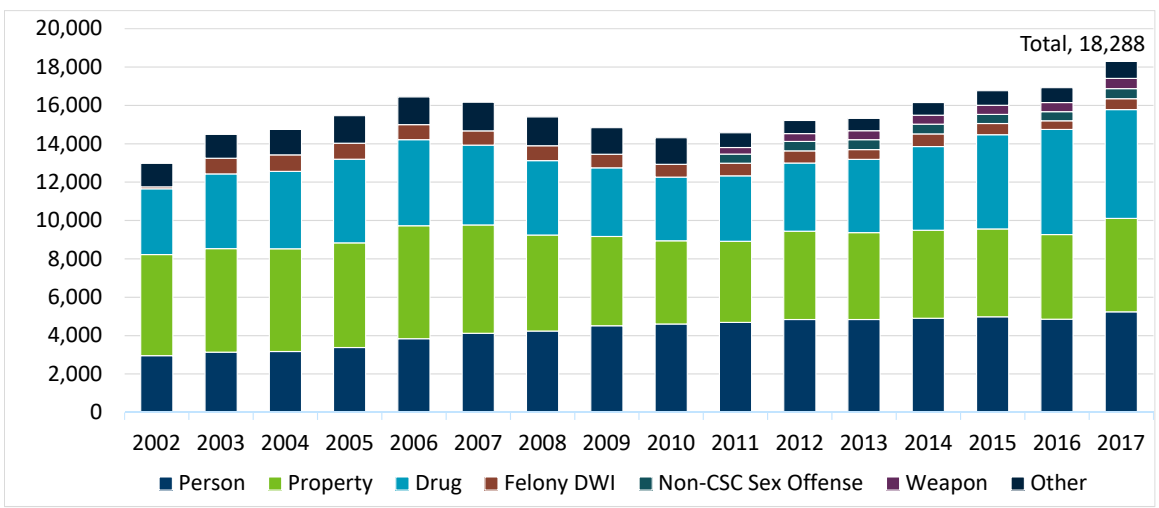




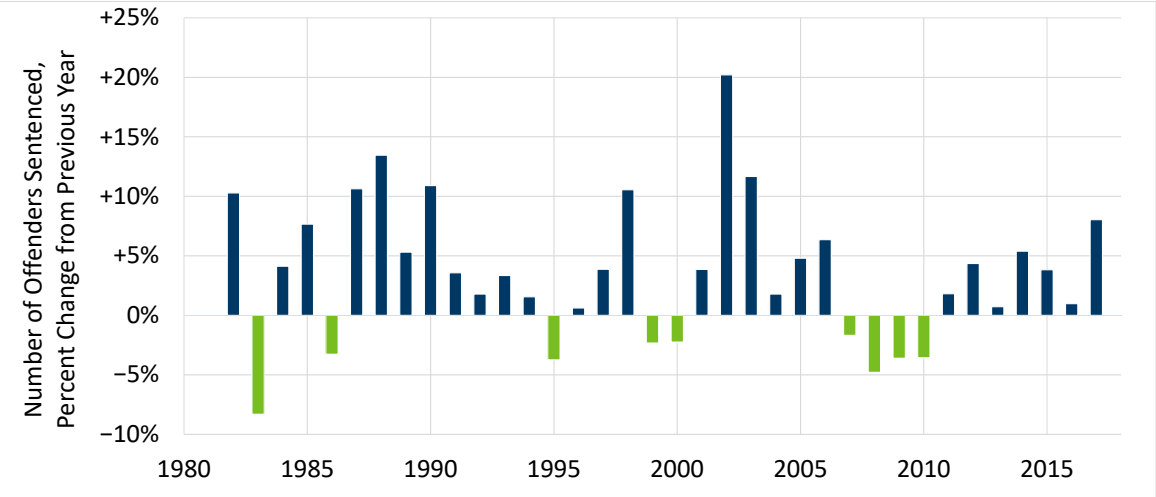
2017 Sentencing Practices: Annual Summary Statistics for Felony Offenders

MSGC Staff Presentation

Number of Offenders Sentenced and by Offense Type, 1981-2017



Percent Change in Number of Offenders Sentenced for Felony Convictions, 1982-2017

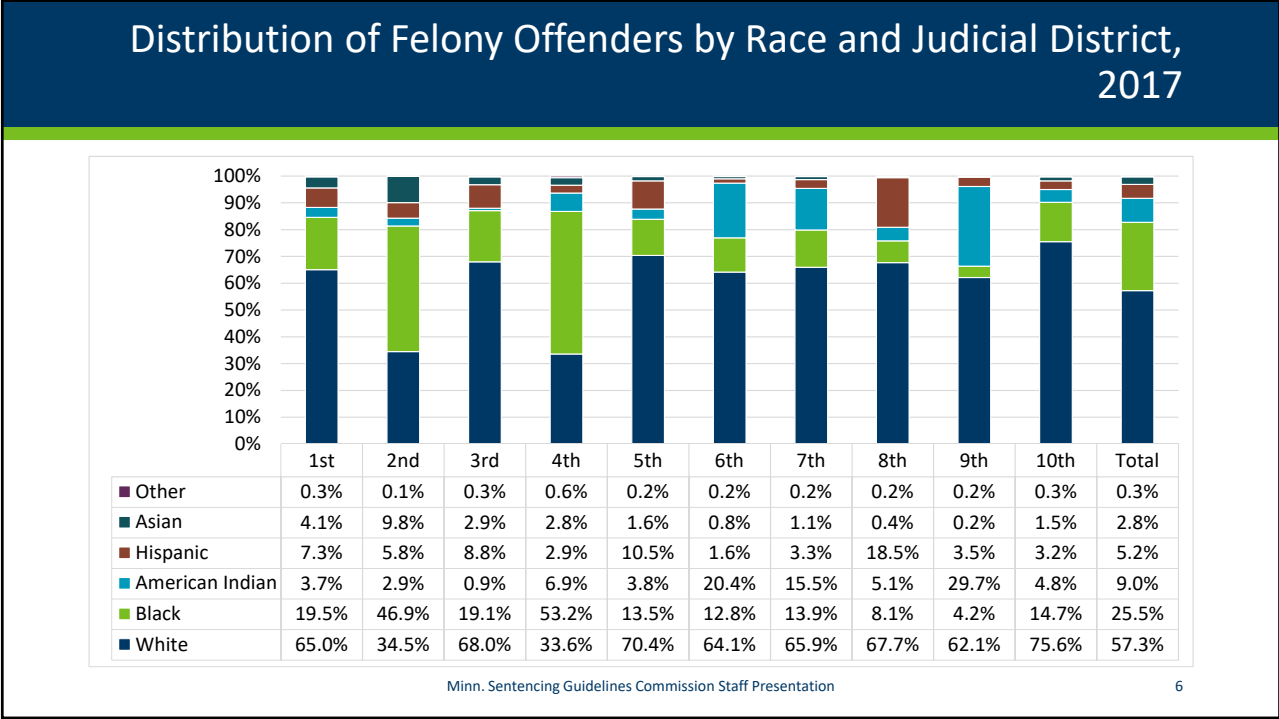
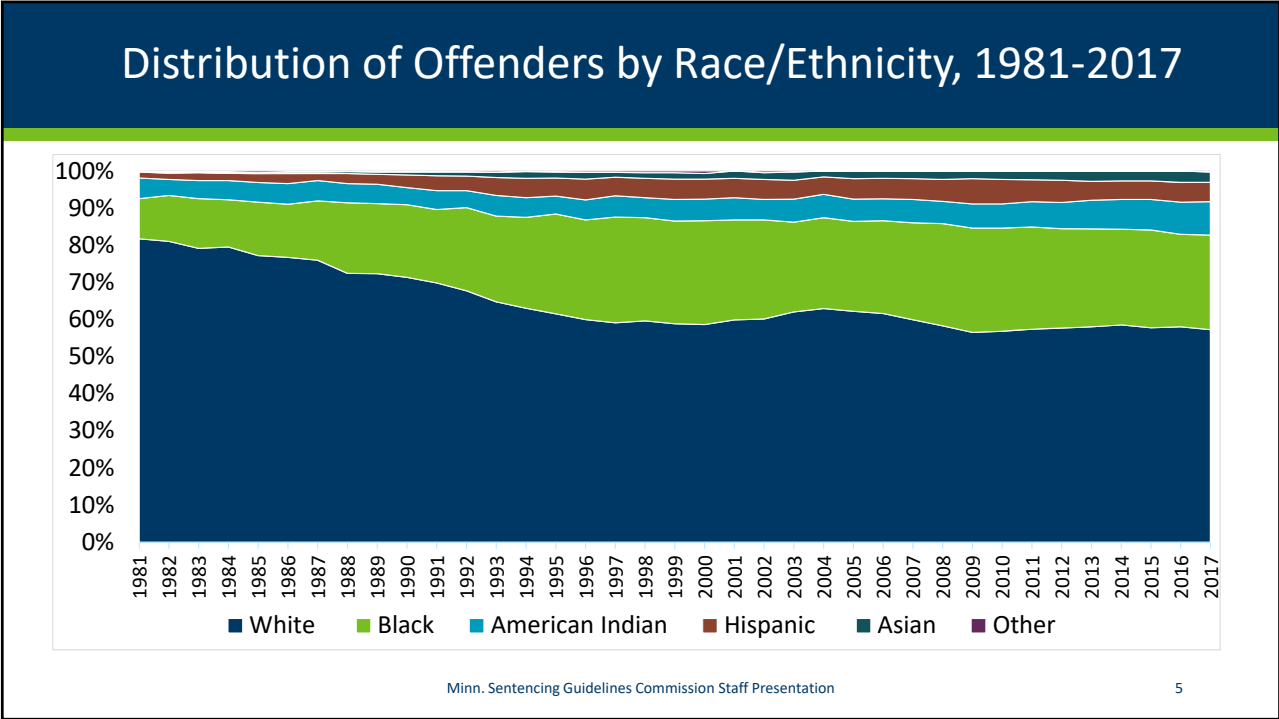


Minn. Sentencing Guidelines Commission Staff Presentation

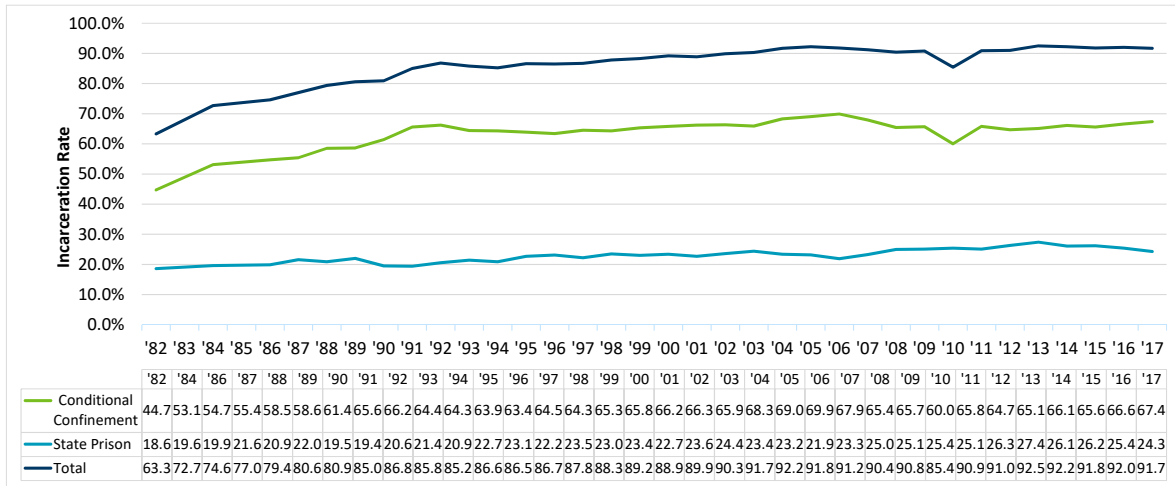
Percent Change by Offense Type

Year Sentenced	All Offenses	Person	Property	Drug	Felony DWI	Non-CSC Sex Offense	Weapon	Other
2001	+3.9%	+3.8%	+4.2%	0.0%				+13.3%
2002	+20.2%	+10.4%	+17.9%	+31.9%				+16.3%
2003	+11.7%	+6.2%	+2.4%	+13.8%				+2.2%
2004	+1.8%	+1.1%	-0.8%	+3.6%	+6.2%			+6.2%
2005	+4.8%	+6.4%	+2.0%	+8.1%	-3.0%			+7.6%
2006	+6.4%	+13.7%	+7.9%	+2.7%	-5.5%			+1.1%
2007	-1.7%	+7.3%	-4.0%	-7.1%	-6.7%			+3.7%
2008	-4.8%	+2.9%	-11.5%	-6.9%	+6.0%			-0.1%
2009	-3.6%	+6.6%	-7.0%	-7.7%	-9.6%			-7.0%
2010	-3.6%	+2.0%	-6.8%	-7.0%	-5.3%	+3.1%	-1.3%	-3.0%
2011	+1.8%	+1.7%	-2.4%	+2.5%	-1.0%	+9.9%	+9.8%	+20.3%
2012	+4.4%	+3.5%	+8.8%	+4.2%	-4.4%	+4.0%	+18.8%	-11.5%
2013	+0.7%	-0.1%	-1.7%	+7.6%	-19.2%	+4.6%	+13.4%	-5.2%
2014	+5.4%	+1.4%	+1.3%	+14.2%	+28.6%	-2.1%	+0.2%	+2.6%
2015	+3.8%	+1.6%	-0.3%	+12.6%	-10.5%	-7.1%	+2.1%	+15.0%
2016	+1.0%	-2.5%	-3.6%	+11.4%	-19.1%	-4.3%	+1.3%	+2.2%
2017	+8.0%	+7.8%	+10.4%	+3.6%	+20.0%	+16.9%	+11.2%	+13.2%

Minn. Sentencing Guidelines Commission Staff Presentation



Total Incarceration Rates, 1982, 1984, 1986-2017



Total Incarceration Rates by Gender & Race/Ethnicity, 2017

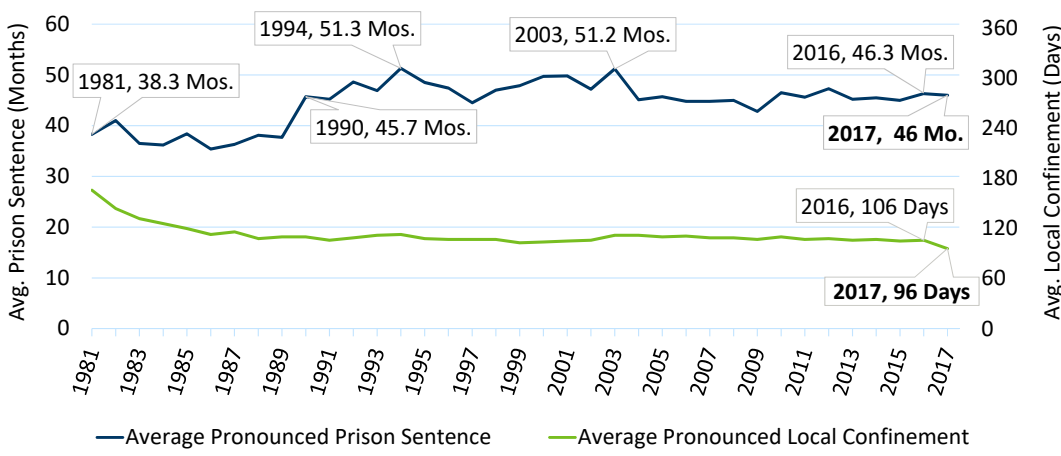
		Total Number	Total Incarceration		State Prison		Conditional Confinement	
			Number	Rate (%)	Number	Rate (%)	Number	Rate (%)
	Male	14,703	13,605	92.5	4,045	27.5	9,560	65.0
	Female	3,584	3,159	88.1	402	11.2	2,757	76.9
Race & Ethnicity	White	10,480	9,521	90.8	2,234	21.3	7,287	69.5
	Black	4,656	4,312	92.6	41,382	29.7	2,930	62.9
	American Indian	1,640	1,528	93.2	449	27.4	1,079	65.8
	Hispanic	942	872	92.6	255	27.1	617	65.5
	Asian	514	481	93.6	118	23.0	363	70.6
	Other/Unknown	55	50	90.9	9	16.4	41	74.5
	Total	18,288	16,764	91.7	4,447	24.3	12,317	67.4

Total Incarceration Rates by Judicial District, 2017

Judicial District	Total Number	Total Incarceration		State Prison		Conditional Confinement	
		Number	Rate (%)	Number	Rate (%)	Number	Rate (%)
First	2,404	2,243	93.3	487	20.3	1,756	73.0
Second	1,815	1,787	98.5	458	25.2	1,329	73.2
Third	1,426	1,232	86.4	367	25.7	865	60.7
Fourth	3,819	3,399	89.0	991	25.9	2,408	63.1
Fifth	1,006	914	90.9	208	20.7	706	70.2
Sixth	912	828	90.8	226	24.8	602	66.0
Seventh	1,972	1,917	97.2	550	27.9	1,367	69.3
Eighth	492	464	94.3	135	27.4	329	66.9
Ninth	1,818	1,486	81.7	474	26.1	1,012	55.7
Tenth	2,624	2,494	95.0	551	21.0	1,943	74.0
Total	18,288	16,764	91.7	4,447	24.3	12,317	67.4

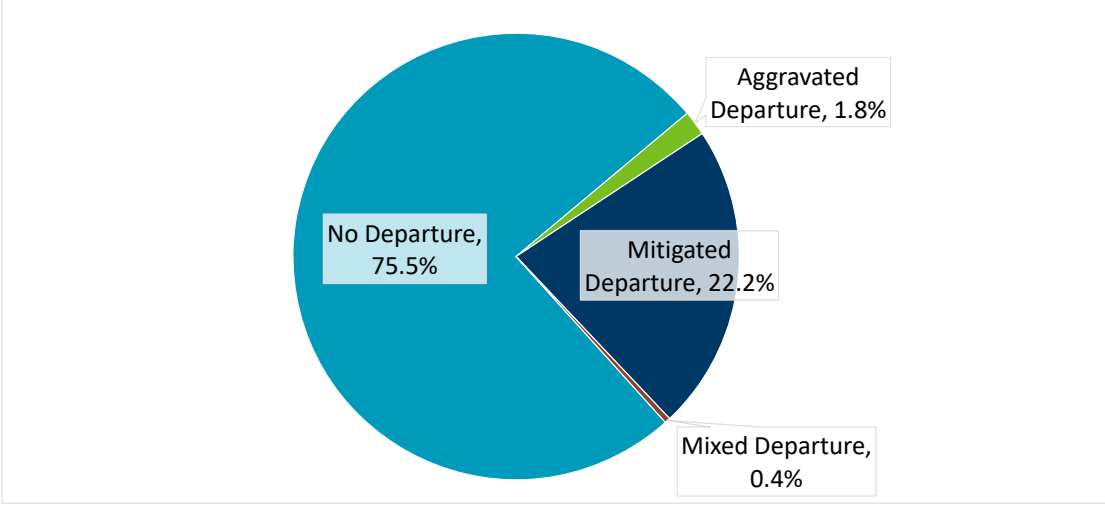
Minn. Sentencing Guidelines Commission Staff Presentation

Average Pronounced Prison Sentences and Confinement in a Local Correctional Facility, 1981-2017



Minn. Sentencing Guidelines Commission Staff Presentation

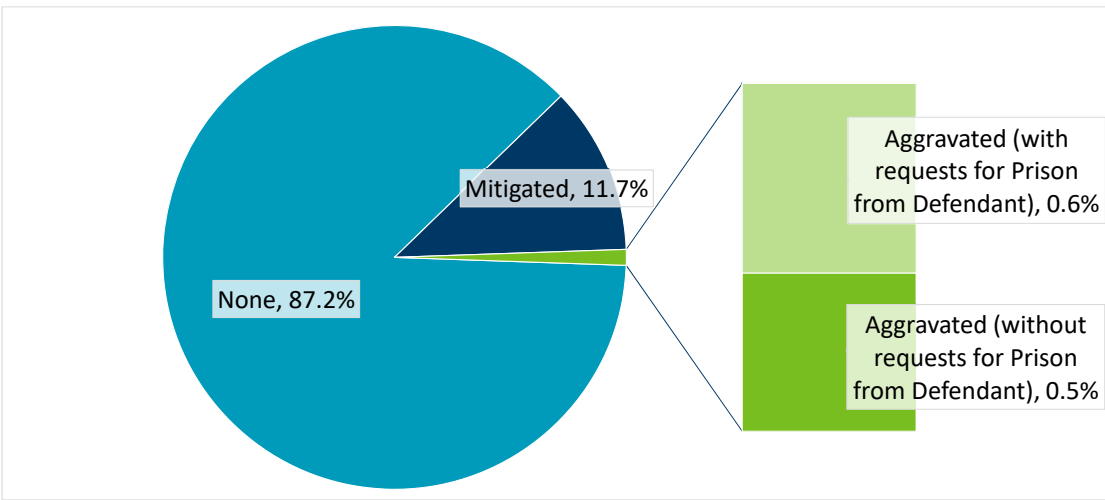
Total Departure Rates, 2017



Minn. Sentencing Guidelines Commission Staff Presentation

11

Dispositional Departure Rates with and without Requests for Prison from Defendant, 2017



Minn. Sentencing Guidelines Commission Staff Presentation

12

Dispositional Departures by Gender & Race/Ethnicity, 2017

		Total Number	Presumptive Stays			Presumptive Commitments		
			Total	Aggravated Dispositional Departure		Total	Mitigated Dispositional Departure	
				Number	Rate (%)		Number	Rate (%)
Race & Ethnicity	Male	14,703	9,326	146	1.6	5,377	1,812	33.7
	Female	3,584	3,012	55	1.8	572	320	55.9
	White	10,480	7,487	122	1.6	2,993	1,156	38.6
	Black	4,656	2,738	33	1.2	1,918	643	33.5
	American Indian	1,640	1,105	24	2.2	535	152	28.4
	Hispanic	942	607	11	1.8	335	110	32.8
	Asian	514	363	10	2.8	151	60	39.7
	Other/ Unknown	55	38	1	2.6	17	11	64.7
	Total	18,288	12,339	201	1.6	5,949	2,132	35.8

Minn. Sentencing Guidelines Commission Staff Presentation

13

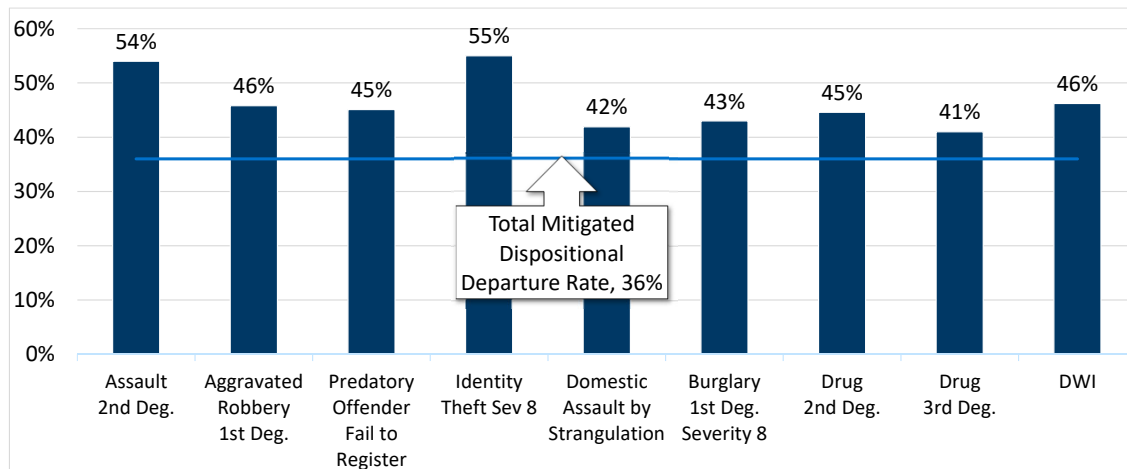
Dispositional Departures by Judicial District, 2017

		Total Number	Presumptive Stays			Presumptive Commitments		
			Total	Aggravated Dispositional Departure		Total	Mitigated Dispositional Departure	
				Number	Rate (%)		Number	Rate (%)
Judicial District	First	2,404	1,737	34	2.0	667	264	39.6
	Second	1,815	1,106	12	1.1	709	289	40.8
	Third	1,426	955	18	1.9	471	173	36.7
	Fourth	3,819	2,424	26	1.1	1,395	486	34.8
	Fifth	1,006	706	6	0.8	300	123	41.0
	Sixth	912	583	8	1.4	329	129	39.2
	Seventh	1,972	1,320	27	2.0	652	181	27.8
	Eighth	492	343	6	1.7	149	43	28.9
	Ninth	1,818	1,305	43	3.3	513	152	29.6
	Tenth	2,624	1,860	21	1.1	764	292	38.2
	Total	18,288	12,339	201	1.6	5,949	2,132	35.8

Minn. Sentencing Guidelines Commission Staff Presentation

14

Mitigated Dispositional Departure Rates for Selected Offenses Compared to Total Rate, 2017



Offenses were selected based on criteria that there were 50 or more presumptive commitment cases and the mitigated dispositional departure rate was 41 percent or more.

Durational Departures by Gender & Race/Ethnicity, 2017

		Number Executed Prison	Total Durational Departure Rate (%)	Durational Departures, Executed Prison Sentences Only					
				No Departure		Aggravated		Mitigated	
				Number	Rate	Number	Rate	Number	Rate
	Male	4,045	24.8	3,042	75.2	109	2.7	894	22.1
	Female	402	21.6	315	78.4	6	1.5	81	20.1
Race & Ethnicity	White	2,234	21.0	1,765	79.0	55	2.5	414	18.5
	Black	1,382	33.6	918	66.4	43	3.1	421	30.5
	American Indian	449	18.0	368	82.0	9	2.0	72	16.0
	Hispanic	255	17.6	210	82.4	4	1.6	41	16.1
	Asian	118	25.4	88	74.6	4	3.4	26	22.0
	Other/Unknown	9	11.1	8	88.9	0	0.0	1	11.1
	Total	4,447	24.5	3,357	75.5	115	2.6	975	21.9

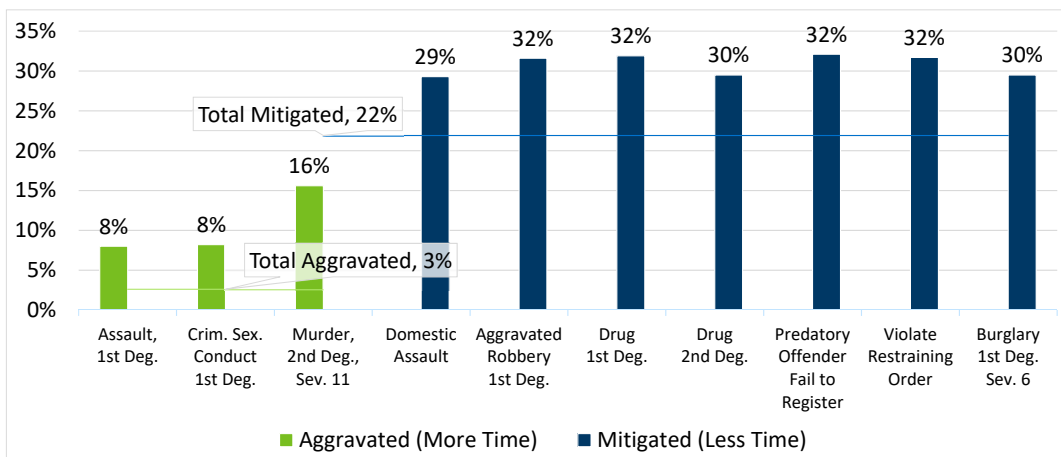
Durational Departures by Judicial District, 2017

		Number Executed Prison	Total Durational Departure Rate (%)	Durational Departures, Executed Prison Sentences Only					
				No Departure		Aggravated		Mitigated	
				Number	Rate	Number	Rate	Number	Rate
Judicial District	First	487	18.7	396	81.3	14	2.9	77	15.8
	Second	458	33.0	307	67.0	9	2.0	142	31.0
	Third	367	10.9	327	89.1	5	1.4	35	9.5
	Fourth	991	45.8	537	54.2	38	3.8	416	42.0
	Fifth	208	22.1	162	77.9	4	1.9	42	20.2
	Sixth	226	15.0	192	85.0	5	2.2	29	12.8
	Seventh	550	19.5	443	80.5	10	1.8	97	17.6
	Eighth	135	9.6	122	90.4	2	1.5	11	8.1
	Ninth	474	12.2	416	87.8	10	2.1	48	10.1
	Tenth	551	17.4	455	82.6	18	3.3	78	14.2
	Total	4,447	24.5	3,357	75.5	115	2.6	975	21.9

Minn. Sentencing Guidelines Commission Staff Presentation

17

Durational Departure Rates for Cases Receiving Executed Prison Sentences, Selected Offenses, 2017

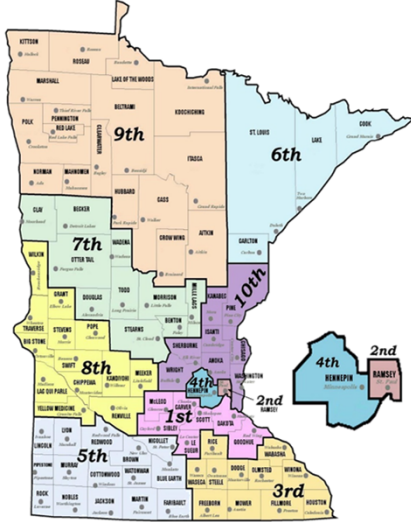


Offenses were selected based on criteria that there were 40 or more executed prison cases, and the aggravated durational departure rate was 8 percent or more or the mitigated durational departure rate was 29 percent or more.

Minn. Sentencing Guidelines Commission Staff Presentation

18

Minnesota Judicial District



Source: Minn. Judicial Branch

<u>First</u>	<u>Second</u>	<u>Third</u>	<u>Fourth</u>	<u>Fifth</u>	<u>Sixth</u>	
Carver Dakota Goodhue Le Sueur McLeod Scott Sibley	Ramsey	Dodge Fillmore Freeborn Houston Mower Olmsted Rice Steele Wabasha Waseca Winona	Hennepin	Blue Earth Brown Cottonwood Faribault Jackson Lincoln Lyon Martin Murray Nicollet Nobles	Pipestone Redwood Rock Watowan	Carlton Cook Lake St. Louis
<u>Seventh</u>	<u>Eighth</u>		<u>Ninth</u>		<u>Tenth</u>	
Becker Benton Clay Douglas Mille Lacs Morrison Otter Tail Stearns Todd Wadena	Big Stone Chippewa Grant Kandiyohi Lac qui Parle Meeker Pope Renville Stevens Swift	Traverse Wilkin Yellow Medicine	Aitkin Beltrami Cass Clearwater Crow Wing Hubbard Itasca Kittson Koochiching Lake of the Woods	Mahnomen Marshall Norman Pennington Crow Wing Red Lake Roseau	Anoka Chisago Isanti Kanabec Pine Sherburne Washington Wright	

Standard Sentencing Grid- Effective August 1, 2017

SEVERITY LEVEL OF CONVICTION OFFENSE (Example offenses listed in italics)	CRIMINAL HISTORY SCORE							
	0	1	2	3	4	5	6 or more	
<i>Murder, 2nd Degree</i> (intentional murder; drive-by-shootings)	11	306 261-367	326 278-391	346 295-415	366 312-439	386 329-463	406 346-480 ²	426 363-480 ²
<i>Murder, 3rd Degree</i> <i>Murder, 2nd Degree</i> (unintentional murder)	10	150 128-180	165 141-198	180 153-216	195 166-234	210 179-252	225 192-270	240 204-288
<i>Assault, 1st Degree</i>	9	86 74-103	98 84-117	110 94-132	122 104-146	134 114-160	146 125-175	158 135-189
<i>Agg. Robbery, 1st Degree;</i> <i>Burglary, 1st Degree (w/ Weapon or Assault)</i>	8	48 41-57	58 50-69	68 58-81	78 67-93	88 75-105	98 84-117	108 92-129
<i>Felony DWI;</i> <i>Financial Exploitation of a Vulnerable Adult</i>	7	36	42	48	54 46-64	60 51-72	66 57-79	72 62-84 ²
<i>Assault, 2nd Degree</i> <i>Burglary, 1st Degree (Occupied Dwelling)</i>	6	21	27	33	39 34-46	45 39-54	51 44-61	57 49-68
<i>Residential Burglary;</i> <i>Simple Robbery</i>	5	18	23	28	33 29-39	38 33-45	43 37-51	48 41-57
<i>Nonresidential Burglary</i>	4	12 ¹	15	18	21	24 21-28	27 23-32	30 26-36
<i>Theft Crimes (Over \$5,000)</i>	3	12 ¹	13	15	17	19 17-22	21 18-25	23 20-27
<i>Theft Crimes (\$5,000 or less)</i> <i>Check Forgery (\$251-\$2,500)</i>	2	12 ¹	12 ¹	13	15	17	19	21 18-25
<i>Assault, 4th Degree</i> <i>Fleeing a Peace Officer</i>	1	12 ¹	12 ¹	12 ¹	13	15	17	19 17-22

Sex Offender Grid- Effective August 1, 2017

SEVERITY LEVEL OF CONVICTION OFFENSE		CRIMINAL HISTORY SCORE						
		0	1	2	3	4	5	6 or More
CSC 1 st Degree	A	144 144-172	156 144-187	168 144-201	180 153-216	234 199-280	306 261-360	360 306-360 ²
CSC 2 nd Degree-(c)(d)(e)(f)(h) <i>Prostitution; Sex Trafficking</i> ³ 1 st Degree-1(a)	B	90 90 ³ -108	110 94-132	130 111-156	150 128-180	195 166-234	255 217-300	300 255-300 ²
CSC 3 rd Degree-(c)(d) (g)(h)(i)(j)(k)(l)(m)(n)(o) <i>Prostitution; Sex Trafficking</i> 2 nd Degree-1a	C	48 41-57	62 53-74	76 65-91	90 77-108	117 100-140	153 131-180	180 153-180 ²
CSC 2 nd Degree-(a)(b)(g) CSC 3 rd Degree-(a)(e)(f) or(b)with ref. to subd. 2(1) <i>Dissemination of Child Pornography (Subsequent or by Predatory Offender)</i>	D	36	48	60 51-72	70 60-84	91 78-109	119 102-142	140 119-168
CSC 4 th Degree-(c)(d) (g)(h)(i)(j)(k)(l)(m)(n)(o) <i>Use Minors in Sexual Performance Dissemination of Child Pornography</i> ²	E	24	36	48	60 51-72	78 67-93	102 87-120	120 102-120 ²
CSC 4 th Degree-(a)(b)(e)(f); CSC 5 th Degree; <i>Possession of Child Pornography (Subsequent or by Predatory Offender)</i>	F	18	27	36	45 39-54	59 51-70	77 66-92	84 72-100
CSC 3 rd Degree-(b) with subd. 2(2); <i>Indecent Exposure Possession of Child Pornography; Solicit Child for Sexual Conduct</i> ²	G	15	20	25	30	39 34-46	51 44-60	60 51-60 ²
<i>Registration Of Predatory Offenders</i>	H	12 ¹ 12 ¹ -14	14 12 ¹ -16	16 14-19	18 16-21	24 21-28	30 26-36	36 31-43

21

Drug Offender Grid- Effective August 1, 2017

SEVERITY LEVEL OF CONVICTION OFFENSE (Example offenses listed in italics)		CRIMINAL HISTORY SCORE						
		0	1	2	3	4	5	6 or more
<i>Aggravated Controlled Substance Crime, 1st Degree Manufacture of Any Amt. Meth</i>	D9	86 74*-103	98 84*-117	110 94*-132	122 104*-146	134 114*-160	146 125*-175	158 135*-189
<i>Controlled Substance Crime, 1st Degree</i>	D8	65 56*-78	75 64*-90	85 73*-102	95 81*-114	105 90*-126	115 98*-138	125 107*-150
<i>Controlled Substance Crime, 2nd Degree</i>	D7	48	58	68 58-81	78 67-93	88 75-105	98 84-117	108 92-129
<i>Controlled Substance Crime, 3rd Degree Failure to Affix Stamp</i>	D6	21	27	33	39 34-46	45 39-54	51 44-61	57 49-68
<i>Possess Substances with Intent to Manufacture Meth</i>	D5	18	23	28	33 29-39	38 33-45	43 37-51	48 41-57
<i>Controlled Substance Crime, 4th Degree</i>	D4	12 ¹	15	18	21	24 21-28	27 23-32	30 26-36
<i>Meth Crimes Involving Children and Vulnerable Adults</i>	D3	12 ¹	13	15	17	19 17-22	21 18-25	23 20-27
<i>Controlled Substance Crime, 5th Degree</i>	D2	12 ¹	12 ¹	13	15	17	19	21 18-25
<i>Sale of Simulated Controlled Substance</i>	D1	12 ¹	12 ¹	12 ¹	13	15	17	19 17-22

22