

**Minnesota Racing Commission
Meeting**

Thursday, February 15, 2024

PUBLIC COPY

**DO NOT REMOVE
FROM ROOM**

**Full Commission Meeting
Thursday, February 15, 2024 – 4:00 p.m.
Nutrena Conference Center
1801 Dudley Avenue, Saint Paul, MN 55108**

AGENDA

- 1) Call to Order
- 2) Roll Call
- 3) Adoption of Agenda
- 4) Approval of Minutes--January 18, 2024

Committee Reports

- 5) Aftercare Committee

Action Items

- 6) Official Medication Testing Laboratory for Quarter Horses and Standardbreds for 2024
- 7) 2024 MRC Controlled Therapeutic Guidelines for the Quarter Horses and the Standardbred Racehorses
- 8) Appointment of Chief Veterinarian
- 9) Appointment of 2024 Board of Judges
- 10) Appointment of 2024 Board of Stewards
- 11) Thoroughbred and Quarter Horse Purse Supplement Allocation for 2024
- 12) Authorizing Resolution to Proceed with Rulemaking and Publish Rules RD 04816
- 13) Canterbury's Trackside Development Area Improvements and Class A License Modification Request

Informational Items

14) Status Reports

- a. Canterbury Park Entertainment
- b. Running Aces Casino, Hotel, and Racetrack

15) Executive Director's Report

- a. HISA Update
- b. Legislative Update
- c. Contract Approvals
- d. ADW Report
- e. Licensing Report
- f. Other

16) MQHRA/MTA/MHRI/MNHBPA Reports

17) Future Meetings

- a. Thursday, March 21, 2024 – Full Commission, Nutrena Center

18) Adjourn

The Commission meeting packet may contain not public data pursuant to the Minnesota Government Data Practices Act. Commission staff has marked such data as not public. Please discard the data in a safe and confidential manner. Should you have questions about the classification of any data please contact Commission staff.

Please notify the Racing Commission if you need special accommodations for this meeting. This material can be given to you in different forms, like large print, Braille or on a tape. If you use a TTY, you can call us using the Minnesota Relay Service at 7-1-1 or 1-800-627-3529.

Item 4 –
Minutes from
January 18, 2024

Full Commission Meeting
Thursday, January 18, 2024 – 4:00 p.m.
Nutrena Conference Center
1801 Dudley Avenue, St. Paul, MN 55108

MINUTES

Call to Order:

Agenda Item 1 – Call to Order

Chair McArdle called the meeting to order at 4:01 p.m.

Roll Call:

Agenda Item 2 – Roll Call

Present –Chair McArdle, Commissioners Koob, Dehn, Idelkope, and Gingold. A quorum was acknowledged.

Other participants – Kyle Gustafson (Executive Director, Minnesota Racing Commission), E. Joseph Newton (General Counsel, Minnesota Racing Commission), Penny Nelson (Deputy Director, Minnesota Racing Commission), Randy Sampson (President/CEO, Canterbury Park Entertainment), John Groen (General Manager, Canterbury Park Entertainment), Amber Carlisle (Racing Operations Manager, Canterbury Park Entertainment), Mike Montros (Sr VP Innovation & Growth, Canterbury Park Entertainment), Tracie Wilson (CFO, Running Aces Casino, Hotel and Racetrack), Taro Ito (President/CEO, Running Aces Casino, Hotel and Racetrack), Aaron Bedessem (Director of Marketing, Running Aces Casino, Hotel and Racetrack), Kay King (Executive Director, Minnesota Thoroughbred Association), Cathy Dessert (Vice President, Minnesota Harness Racing, Inc.) Mike Cronin (Minnesota Horsemen’s Benevolent and Protective Association).

Adoption of Agenda:

Agenda Item 3 – Approval of Agenda

Chair McArdle made an amendment to delete item 5 and 6 under Action Items; Commissioner Gingold motioned to approve the agenda; Second by Commissioner Idelkope; Motion passed.

Approval of Minutes:

Agenda Item 4 – Approval of Minutes

Commissioner Dehn motioned to approve the December 21, 2023, minutes with a minor grammatical edit; Second by Commissioner Gingold. Motion passed.

Action Items:

Agenda Item 5 – Final Approval to Publish Racing Rules

This item was removed from the agenda.

Agenda Item 6 – Canterbury Trackside Development Area Improvements & Class A License Modification Request

This item was removed from the agenda.

The Minnesota Racing Commission and the State of Minnesota is committed to accessibility for all. If you require this document modified in any way to accommodate for disability, please let the sender know.

Informational Items:

Agenda Item 7 – Informational Overview of Tracks’ Request for ON-Track Advanced Deposit Wagering on Historical Horse Racing – Request will be referred to appropriate committees for further review.

Mr. Sampson, Mr. Montros & Ms. Wilson presented a PowerPoint presentation. Commission Koob asked About the Tracks seeking approval of Group 2 and Group 3 game themes? Ms. Wilson answered that the Tracks’ feel these games are the best fit at this time. Commissioner Gingold asked if in the jurisdictions where it is being used now is it the same in terms of having an ADW provider in place? Ms. Wilson answered no these are different; this is account wagering that is why on-track advanced deposit wagering. There is not used in other jurisdictions. Commissioner Idelkope asked about what the games look like in reference to one of the slides. Mr. Montros gave a brief overview of the screens. Commissioner Idelkope followed that with her understanding is the legislature specifically authorized ADW specifically for para mutual and HHR is considered para mutual? Mr. Montros replied that yes and is backed by research and the opinion by Gaming Laboratories International these are all based on para mutual races, because everyone shares in a pool, and it follows all the rules required to be para mutual wagers. Commissioner Dehn asked about how the pools are calculated. Mr. Montros explained the proprietary information from Amtote is provided in the Gaming Laboratories research. The Tracks will have a representative from Amtote for the committee meetings can answer all the questions.

Agenda Item 8 – Status Reports

A. Canterbury Park Entertainment Running Aces Casino, Hotel and Racetrack

Mr. Groen presented finalized the QH & TB stakes schedule, consolidating several of the stakes to bigger days focus on Saturday nights. Holding joint meetings on narrow the number of conditions to help support field size, asked for a condition book committee to talk through to make sure making changes that make sense. Will be led by Ms. Carlisle. Finalizing the incentive program, which this year will be a prepaid starter incentive program. ISOC event very successful. December casino revenues were strong up slightly over last year. New barns are going up very fast. Commissioner Dehn asked if 2023 similar to 2022? Mr. Groen replied on the challenges with out of state handle and the significant impact. A little bit softer than would like but feeling good about where things are.

A. Running Aces Casino, Hotel and Racetrack

Mr. Bedessem presented, excited planning for racing. Coming in the next couple of weeks Ice cart racing in parking lot. Renovating food area, bringing in outside food vendors again. Renovating an area in the back of the card room to offer some BBQ. Working with the county on food license. Bringing back a lot of nonprofits like last year. Also brining back a few outdoor concerts. Mr. Ito brought a few things from Mr. Carpenito. Stall Applications have been completed and will be coming out soon, Seasonal help going as planned. Mild weather in December contributed to a strong month, ended up 1.7% higher than last year.

Agenda Item 9 – Executive Director’s Report

- A. HISA Update**
- B. Legislative Update**
- C. Contract Approvals**
- D. ADW Report**
- E. Licensing Report**
- F. Other**

Mr. Gustafson, Executive Director presented.

- A. HISA Update - HISA waiting on FCC for updated rules.
- B. Legislative Update - Submitted the request from the last Commission meeting for Governor supplemental budget for the temporary two-year increases in the ADW fee to use as a revenue source

to pay the annual HISA assessment.

- C. Contract Approvals – Contract between Canterbury and NYRA content management services for simulcast content material.
- D. ADW
- E. Licensing Report
- F. Other - Posting contract positions.

Item 10 – MQHRA/MTA/MHRI/MNHBPA Reports

MTA – Kay King –2024 MTA Stallion Auction 1st book ended now into 2nd book, some of the season did not sell the 1st time. Working with some of the farms to maybe drop some of the reserves. First foal of the year has arrived 1-14-24. Sent emails to everyone who had a foal in 2023 (78), to determine how many of those may be interested in the Yearling auction held in August/September. So far there are 20/22.

MHRI – Cathy Dessert –Planning MHRI Banquet February 17, 2024. Couple new awards this year, one of them is a “Caretaker Award”. Still planning a Stallion Auction, will be on-line for the first time. Stall Applications are due March 18th, Horseman’s Resources Handbook has been posted. Advertising stallions that are posted on the breeder’s fund on social media and website. Heartland SB sale has moved to Cannon Falls, MN

MNHBPA – Mike Cronin – Shout out to Canterbury Park and Running Aces on all their work on ADW and HHR. Gearing up for legislative session. Sports betting is back in the headlines. Representative from Shakopee area, Brad Tabke has committed himself to get the resources of the state to help folks in the stable area. Also shout out to Ms. Carlisle for the incentive program, it is very well done, competitive and hope it works.

Chair McArdle asked everyone in the room and cares about horse racing to make a personal attempt to contact with as many legislators as you can, most particularly those in the area where you live. Ask your friends, family, and employees too. Remind them what racing in Minnesota means in terms of jobs, farms, and that kind of thing. It is going to be a very important for the industry to put themselves forward as a reminder it is not just the individuals that own the race tracks but people who have invested their heart and money into breeding, horses and racing horses in the state and creating jobs in the state. Keep on making calls and emails, making noise, because legislators tend to pay most attention to the noisiest group, fight for this fight, if not it may not be around much longer.

Item 12 – Future Meetings

Full Commission – Thursday, February 15, 2024, at Nutrena Conference Center 1801 Dudley Avenue Saint Paul, MN 55108. Working on setting up committee meetings as they are scheduled notice will be sent out.

Item 13 – Adjournment

Motion to adjourn by Commissioner Dehn Second by Commissioner. Chair McArdle adjourned the meeting on Monday, December 21, 2023, at 5:37 p.m.

THESE MEETING MINUTES HAVE BEEN APPROVED ON THIS ____ DAY OF _____, 2024 BY A QUORUM OF THE MINNESOTA RACING COMMISSION.

Item 5 –
Committee Reports
Racehorse Aftercare
Committee

Action Items

Item 6 –

Official Medication
Testing Laboratory for
Quarter Horses and
Standardbreds for 2024

Item 7 –
2024 MRC
Controlled
Therapeutic
Guidelines for the
Quarter Horses and
the Standardbred
Racehorses

2024 MRC Version of the ARCI Controlled Therapeutic Medication Schedule For Quarter Horses ONLY

| Controlled Therapeutic Medication | Threshold | Withdrawal Guideline | Dosing Specifications | Reference Notes | Note |
|-----------------------------------|---|----------------------|---|--|---|
| Acepromazine | 10 nanograms per milliliter as 2-(1-hydroxyethyl) promazine sulfoxide (HEPS) in urine | 48 hours | Single intravenous dose of acepromazine at 0.05 milligrams per kilogram | University of California at Davis project | Applicable analyte is metabolite HEPS |
| Albuterol^{1,2} | Limit of Detection | | | | |
| Betamethasone³ | Limit of Detection | | | | |
| Butorphanol | 300 nanograms per milliliter of total butorphanol in urine or 2 nanograms of free butorphanol per milliliter of plasma or serum | 48 hours | Single intravenous dose of butorphanol as Torbugesic [®] (butorphanol tartrate) at 0.1 milligrams per kilogram | <i>Journal of Veterinary Pharmacology and Therapeutics</i> doi: 10.1111/j.1365-2885.2012.01385.x | Applicable analytes are total butorphanol (drug and conjugates) in urine and butorphanol in plasma (the drug itself, not any conjugate) |

1. Administration of albuterol by any means other than intra-nasal has a high likelihood of resulting in a positive finding. This specifically includes oral and intramuscular (IM) administration. Trainers and veterinarians are cautioned against using oral and IM albuterol.
2. Albuterol is a prohibited substance in Quarter Horses.
3. Intramuscular administration of betamethasone acetate will result in plasma or serum concentrations which will exceed the Regulatory Threshold for weeks or even months, making the horse ineligible to race for an extended period.

2024 MRC Version of the ARCI Controlled Therapeutic Medication Schedule For Quarter Horses ONLY

| Controlled Therapeutic Medication | Threshold | Withdrawal Guideline | Dosing Specifications | Reference Notes | Note |
|-----------------------------------|--|----------------------|---|---|---|
| Cetirizine | 6 nanograms per milliliter of plasma or serum | 48 hours | 0.4 milligrams per kilogram twice daily for 5 doses | Kentucky Equine Drug Research Council/University of California at Davis study | Do not administer ivermectin within 48 hours of a race if the horse has been administered cetirizine. |
| Cimetidine | 400 nanograms per milliliter of plasma or serum | 48 hours | 20 milligrams per kilogram twice daily for 7 doses | Kentucky Equine Drug Research Council/University of California at Davis study | |
| Clenbuterol⁴ | Limit of Detection | | | . | |
| Dantrolene | 100 picograms per milliliter of 5-hydroxydantrolene in plasma or serum | 48 hours | Oral administration of 500 milligrams of dantrolene as paste (compounding pharmacy) or capsule formulation (Proctor and Gamble) | <i>Journal of Veterinary Pharmacology and Therapeutics</i> 34, 238–246 | |
| Detomidine | 2 nanograms per milliliter of carboxydetomidine in urine or 1 nanogram per milliliter of detomidine in blood | 48 hours | 5 mg IV (once) | KY EDRC, UC Davis/UF Study. | Dormosedan™ used in study. |

4. Clenbuterol is a prohibited substance Quarter Horses unless the appropriate paperwork has been filed with an MRC Veterinarian

**2024 MRC Version of the ARCI Controlled Therapeutic Medication Schedule
For Quarter Horses ONLY**

| Controlled Therapeutic Medication | Threshold | Withdrawal Guideline | Dosing Specifications | Reference Notes | Note |
|--|---|-----------------------------|------------------------------|------------------------|---|
| Dexamethasone | Limit of Detection | | | | |
| Diclofenac | Limit of Detection | | | | |
| Dimethyl sulfoxide (DMSO) | 10 micrograms per milliliter of plasma or serum | 48 hours | Intravenous | ARCI model rule | Applicable analyte is DMSO in plasma or serum |
| Firocoxib | Limit of Detection | | | | |

2024 MRC Version of the ARCI Controlled Therapeutic Medication Schedule For Quarter Horses ONLY

| Controlled Therapeutic Medication | Threshold | Withdrawal Guideline | Dosing Specifications | Reference Notes | Note |
|-----------------------------------|---|----------------------|---|--|--|
| Furosemide⁵ | 100 nanogram per milliliter of plasma or serum | 4 hours | Single intravenous dose of furosemide up to 250 milligrams | ARCI model rule / MRC rule | |
| Glycopyrrolate | 3 picograms per milliliter plasma or serum | 48 hours | Single intravenous dose of 1 milligram of glycopyrrolate as glycopyrrolate injection, USP. (American Regent product # 0517-4601-25) | RMTC study; <i>Journal of Veterinary Pharmacology and Therapeutics</i> doi: 10.1111/j.1365-2885.2011.01272.x | Applicable analyte is glycopyrrolate in plasma or serum |
| Guaifenesin | 12 nanograms per milliliter of plasma or serum | 48 hours | 2 grams twice daily for 5 doses | Kentucky Equine Drug Research Council/University of California at Davis study | |
| Isoflupredone | Limit of Detection | | | | |
| Lidocaine | 20 picograms per milliliter of total 30H-lidocaine in plasma or serum | 72 hours | 200 milligrams of lidocaine as its hydrochloride salt administered subcutaneously | European Horseracing Scientific Liaison Committee data; Iowa State University study. | Applies to total major hydroxylated metabolite (i.e., includes conjugates) |

5. 5.
5. 5.

5.Furosemide is prohibited in 2-year-old Quarter Horses.

2024 MRC Version of the ARCI Controlled Therapeutic Medication Schedule For Quarter Horses ONLY

| Controlled Therapeutic Medication | Threshold | Withdrawal Guideline | Dosing Specifications | Reference Notes | Note |
|---------------------------------------|--|----------------------|--|--|--|
| Mepivacaine | 10 nanograms total hydroxymepivacaine per milliliter of urine or Level of Detection of mepivacaine in plasma or serum | 72 hours | Single 0.07 milligrams per kilogram subcutaneous dose of mepivacaine | European Horseracing Scientific Liaison Committee data | |
| Methocarbamol | 1 nanogram per milliliter of plasma or serum | 48 hours | Single intravenous dose of 15 milligrams per kilogram methocarbamol as Robaxin® or 5 grams orally | <i>Journal of Veterinary Pharmacology and Therapeutics</i> doi: 10.1111/jvp.12068 | Applicable analyte is methocarbamol in plasma or serum |
| Methylprednisolone⁶ | 100 picograms per milliliter of plasma or serum | 14 days | Total dose of methylprednisolone acetate suspension in one articular space. The recommended withdrawal for methylprednisolone acetate is a minimum of 21 days at a 100-milligram dose | <i>Journal of Veterinary Pharmacology and Therapeutics</i> volume 37, Issue 2, pages 125–132, April 2014 | Applicable analyte is methylprednisolone |
| Omeprazole | omeprazole sulfide - 10 nanograms per milliliter of plasma or serum | 48 hours | Orally (2.2 grams) once daily for 4 doses | Kentucky Equine Drug Research Council/University of California at Davis study | GastroGuard™ used in the study |

6. Intramuscular administration of methylprednisolone acetate will result in plasma or serum concentrations which will exceed the Regulatory Threshold for weeks or even months, making the horse ineligible to race for an extended period. Please see Dosing Specifications for recommended withdrawal time.

**2024 MRC Version of the ARCI Controlled Therapeutic Medication Schedule
For Quarter Horses ONLY**

| Controlled Therapeutic Medication | Threshold | Withdrawal Guideline | Dosing Specifications | Reference Notes | Note |
|---|---|-----------------------------|---|---|--|
| Prednisolone | Limit of Detection | | | | |
| Procaine penicillin (administration must be reported to Commission) | 25 nanograms per milliliter of plasma or serum | Following entry to race | Intramuscular | RMTC – reference notes online | Mandatory surveillance of horse at owner’s expense 6 hours before racing |
| Ranitidine | 40 nanograms per milliliter of plasma or serum | 48 hours | 8 milligrams per kilogram twice daily for 7 doses | Kentucky Equine Drug Research Council/University of California at Davis study | |
| Triamcinolone acetonide⁷ | Limit of Detection | | | | |
| Xylazine | 200 picograms per milliliter of plasma or serum | 48 hours | 200 milligrams intravenously | University of California at Davis study | Applicable analyte is xylazine. |

7. Intramuscular administration of triamcinolone acetonide will result in plasma or serum concentrations which will exceed the Regulatory Threshold for weeks or even months, making the horse ineligible to race for an extended period.

**2024 MRC Version of the ARCI Controlled Therapeutic Medication Schedule
For Quarter Horses ONLY**

Non-Steroidal Anti-Inflammatory Drug (NSAID) Rules for Horses^{††}

| | | | | | |
|-----------------------|--|----------|---|--|--|
| Flunixin | 5.0 nanograms per milliliter of plasma or serum | 48 hours | Single intravenous dose of flunixin as Banamine [®] (flunixinmeglumine) at 1.1 milligrams per kilogram | University of California at Davis/RMTC study | |
| Ketoprofen | 2.0 nanograms per milliliter of plasma or serum | 48 hours | Single intravenous dose of ketoprofen as Ketofen [®] at 2.2 milligrams per kilogram | HFL Sport Sciences/ Kentucky Equine Drug and Research Council/RMTC study / University of California / Davis | |
| Phenylbutazone | 0.3 micrograms per milliliter of plasma or serum | 48 hours | Single intravenous dose of phenylbutazone at 4.0 milligrams per kilogram | University of California/ Davis / RMTC study | |

^{††} Samples collected may contain one of the NSAIDs in this chart at a concentration up to the Primary Threshold. The detection of one or more additional NSAIDs in blood and/or urine constitutes a stacking violation in addition to the violation associated with the detection of each additional NSAID

2024 MRC Version of Controlled Therapeutic Medications for STANDARDBRED HORSES ONLY

| Controlled Therapeutic Medication | Threshold | Withdrawal Guideline | Dosing Specifications | Reference Notes | Note |
|-----------------------------------|---|----------------------|---|--|---|
| Acepromazine | 10 nanograms per milliliter as 2-(1-hydroxyethyl) promazine sulfoxide (HEPS) in urine | 48 hours | Single intravenous dose of acepromazine at 0.05 milligrams per kilogram | University of California at Davis project | Applicable analyte is metabolite HEPS |
| Albuterol¹ | 1 nanogram per milliliter of urine | 72 hours | 720 micrograms total dose intra-nasal only. Based on dosing up to 4 times per day | European Horseracing Scientific Liaison Committee Data | |
| Betamethasone² | 10 picograms per milliliter of plasma or serum | 7 days | Intra-articular administration of 9 milligrams of Betamethasone Sodium Phosphate and Betamethasone Acetate Injectable Suspension, USP (American Regent product #0517-0720-01) | RMTC study | Intra-articular dosing only - applicable analyte is betamethasone in plasma or serum |
| Butorphanol | 300 nanograms per milliliter of total butorphanol in urine or 2 nanograms of free butorphanol per milliliter of plasma or serum | 48 hours | Single intravenous dose of butorphanol as Torbugesic [®] (butorphanol tartrate) at 0.1 milligrams per kilogram | <i>Journal of Veterinary Pharmacology and Therapeutics</i> doi: 10.1111/j.1365-2885.2012.01385.x | Applicable analytes are total butorphanol (drug and conjugates) in urine and butorphanol in plasma (the drug itself, not any conjugate) |

1. Administration of albuterol by any means other than intra-nasal has a high likelihood of resulting in a positive finding. This specifically includes oral and intramuscular (IM) administration. Trainers and veterinarians are cautioned against using oral and IM albuterol.
2. Intramuscular administration of betamethasone acetate will result in plasma or serum concentrations which will exceed the Regulatory Threshold for weeks or even months, making the horse ineligible to race for an extended period.

2024 MRC Version of Controlled Therapeutic Medications for STANDARDBRED HORSES ONLY

| Controlled Therapeutic Medication | Threshold | Withdrawal Guideline | Dosing Specifications | Reference Notes | Note |
|-----------------------------------|--|----------------------|---|---|---|
| Cetirizine | 6 nanograms per milliliter of plasma or serum | 48 hours | 0.4 milligrams per kilogram twice daily for 5 doses | Kentucky Equine Drug Research Council/University of California at Davis study | Do not administer ivermectin within 48 hours of a race if the horse has been administered cetirizine. |
| Cimetidine | 400 nanograms per milliliter of plasma or serum | 48 hours | 20 milligrams per kilogram twice daily for 7 doses | Kentucky Equine Drug Research Council/University of California at Davis study | |
| Clenbuterol³ | Limit of Detection | | | | |
| Dantrolene | 100 picograms per milliliter of 5-hydroxydantrolene in plasma or serum | 48 hours | Oral administration of 500 milligrams of dantrolene as paste (compounding pharmacy) or capsule formulation (Proctor and Gamble) | <i>Journal of Veterinary Pharmacology and Therapeutics</i> 34, 238–246 | |
| Detomidine | 2 nanograms per milliliter of carboxydetomidine in urine or 1 nanogram per milliliter of detomidine in blood | 48 hours | 5 mg IV (once) | KY EDRC, UC Davis/UF Study. | Dormosedan™ used in study. |

3. Clenbuterol is a prohibited substance in horses of all breeds unless the appropriate paperwork has been filed with an MRC Veterinarian.

2024 MRC Version of Controlled Therapeutic Medications for STANDARDBRED HORSES ONLY

| Controlled Therapeutic Medication | Threshold | Withdrawal Guideline | Dosing Specifications | Reference Notes | Note |
|-----------------------------------|---|----------------------|-----------------------|-----------------|---|
| Dexamethasone | Limit of Detection | | | | |
| Diclofenac | Limit of Detection | | | | |
| Dimethyl sulfoxide (DMSO) | 10 micrograms per milliliter of plasma or serum | 48 hours | Intravenous | ARCI model rule | Applicable analyte is DMSO in plasma or serum |
| Firocoxib | Limit of Detection | | | | |

2024 MRC Version of Controlled Therapeutic Medications for STANDARDBRED HORSES ONLY

| Controlled Therapeutic Medication | Threshold | Withdrawal Guideline | Dosing Specifications | Reference Notes | Note |
|-----------------------------------|---|----------------------|---|--|--|
| Furosemide⁴ | 100 nanogram per milliliter of plasma or serum | 4 hours | Single intravenous dose of furosemide up to 250 milligrams | ARCI model rule / MRC rule | |
| Glycopyrrolate | 3 picograms per milliliter plasma or serum | 48 hours | Single intravenous dose of 1 milligram of glycopyrrolate as glycopyrrolate injection, USP. (American Regent product # 0517-4601-25) | RMTC study; <i>Journal of Veterinary Pharmacology and Therapeutics</i> doi: 10.1111/j.1365-2885.2011.01272.x | Applicable analyte is glycopyrrolate in plasma or serum |
| Guaifenesin | 12 nanograms per milliliter of plasma or serum | 48 hours | 2 grams twice daily for 5 doses | Kentucky Equine Drug Research Council/University of California at Davis study | |
| Isoflupredone | 100 picograms per milliliter of plasma or serum | 7 days | 20 milligrams total dose in one articular space | RMTC Study | |
| Lidocaine | 20 picograms per milliliter of total 30H-lidocaine in plasma or serum | 72 hours | 200 milligrams of lidocaine as its hydrochloride salt administered subcutaneously | European Horseracing Scientific Liaison Committee data; Iowa State University study. | Applies to total major hydroxylated metabolite (i.e., includes conjugates) |

4. Furosemide is prohibited in 2-year-old horses of all breeds.

2024 MRC Version of Controlled Therapeutic Medications for STANDARDBRED HORSES ONLY

| Controlled Therapeutic Medication | Threshold | Withdrawal Guideline | Dosing Specifications | Reference Notes | Note |
|---------------------------------------|--|---------------------------|---|--|--|
| Mepivacaine | 10 nanograms total hydroxymepivacaine per milliliter of urine or Level of Detection of mepivacaine in plasma or serum | 72 hours | Single 0.07 milligrams per kilogram subcutaneous dose of mepivacaine | European Horseracing Scientific Liaison Committee data | |
| Methocarbamol | 1 nanogram per milliliter of plasma or serum | 48 hours | Single intravenous dose of 15 milligrams per kilogram methocarbamol as Robaxin® or 5 grams orally | <i>Journal of Veterinary Pharmacology and Therapeutics</i> doi: 10.1111/jvp.12068 | Applicable analyte is methocarbamol in plasma or serum |
| Methylprednisolone⁵ | 100 picograms per milliliter of plasma or serum | See Dosing Specifications | Total dose of methylprednisolone acetate suspension in one articular space. The recommended withdrawal for methylprednisolone acetate is a minimum of 21 days at a 100-milligram dose | <i>Journal of Veterinary Pharmacology and Therapeutics</i> volume 37, Issue 2, pages 125–132, April 2014 | Applicable analyte is methylprednisolone |
| Omeprazole | omeprazole sulfide - 10 nanograms per milliliter of plasma or serum | 48 hours | Orally (2.2 grams) once daily for 4 doses | Kentucky Equine Drug Research Council/University of California at Davis study | GastroGuard™ used in the study |

5. Intramuscular administration of methylprednisolone acetate will result in plasma or serum concentrations which will exceed the Regulatory Threshold for weeks or even months, making the horse ineligible to race for an extended period. Please see Dosing Specifications for recommended withdrawal time.

2024 MRC Version of Controlled Therapeutic Medications for STANDARDBRED HORSES ONLY

| Controlled Therapeutic Medication | Threshold | Withdrawal Guideline | Dosing Specifications | Reference Notes | Note |
|---|---|-------------------------|---|---|--|
| Prednisolone | Limit of Detection | | | | |
| Procaine penicillin (administration must be reported to Commission) | 25 nanograms per milliliter of plasma or serum | Following entry to race | Intramuscular | RMTC – reference notes online | Mandatory surveillance of horse at owner’s expense 6 hours before racing |
| Ranitidine | 40 nanograms per milliliter of plasma or serum | 48 hours | 8 milligrams per kilogram twice daily for 7 doses | Kentucky Equine Drug Research Council/University of California at Davis study | |
| Triamcinolone acetonide⁶ | 100 picograms per milliliter of plasma or serum | 7 days | Total dose of 9 milligrams in one articular space | <i>Equine Veterinary Journal</i> , 10.1111/evj.12059 (2013) | Applicable analyte is triamcinolone acetonide in plasma or serum |
| Xylazine | 200 picograms per milliliter of plasma or serum | 48 hours | 200 milligrams intravenously | University of California at Davis study | Applicable analyte is xylazine. |

6. Intramuscular administration of triamcinolone acetonide will result in plasma or serum concentrations which will exceed the Regulatory Threshold for weeks or even months, making the horse ineligible to race for an extended period.

2024 MRC Version of Controlled Therapeutic Medications for STANDARDBRED HORSES ONLY

Non-Steroidal Anti-Inflammatory Drug (NSAID) Rules for Horses^{††}

| | | | | | |
|-----------------------|--|----------|--|---|--|
| Flunixin | 5.0 nanograms per milliliter of plasma or serum | 48 hours | Single intravenous dose of flunixin as Banamine [®] (flunixinmeoglumine) at 1.1 milligrams per kilogram | University of California at Davis/RMTC study | |
| Ketoprofen | 2.0 nanograms per milliliter of plasma or serum | 48 hours | Single intravenous dose of ketoprofen as Ketofen [®] at 2.2 milligrams per kilogram | HFL Sport Sciences/ Kentucky Equine Drug and Research Council/RMTC study / University of California / Davis | |
| Phenylbutazone | 0.3 micrograms per milliliter of plasma or serum | 48 hours | Single intravenous dose of phenylbutazone at 4.0 milligrams per kilogram | University of California/ Davis / RMTC study | |

^{††} Samples collected may contain one of the NSAIDs in this chart at a concentration up to the Primary Threshold. The detection of one or more additional NSAIDs in blood and/or urine constitutes a stacking violation in addition to the violation associated with the detection of each additional NSAID

Item 8 –
Appointment of Chief
Veterinarian

CURRICULUM VITAE

Lynn Rolland Hovda, RPH, DVM, MS
Diplomate, American College of Veterinary Internal
Medicine The Flying J Veterinary Clinic, LLC

EDUCATION

| | |
|-----------|--|
| June 1991 | Diplomate, American College of Veterinary Internal Medicine |
| May 1989 | MS, Veterinary Science University of Wisconsin, Madison, WI |
| July 1989 | Large Animal Internal Medicine Residency College of Veterinary Medicine University of Wisconsin, Madison, WI |
| July 1986 | Large Animal Internship School of Veterinary Medicine University of Georgia, Athens, GA |
| June 1985 | DVM, College of Veterinary Medicine University of Minnesota, St. Paul, MN |
| June 1983 | BS, Veterinary Science University of Minnesota, St. Paul, MN |
| May 1978 | BS, Pharmacy North Dakota State University, Fargo, ND |

MS THESIS

Hovda, LR. Selected postprandial hormone responses, clinicopathologic changes, and growth parameters in normal calves and in chronically diarrheic calves fed traditionally or with partial parenteral nutrition. MS Thesis, Department of Veterinary Science, University of Wisconsin, 1989.

POSITIONS HELD

| | |
|--------------------------------|--|
| April 1994 – Present | Chief Commission Veterinarian, Minnesota Racing Commission, Shakopee, MN |
| September 2004 – Present | Director, Veterinary Medicine, SafetyCall International and Pet Poison Helpline, Bloomington, MN |
| March 2013 – September 2014 | Veterinary Consultant, Massachusetts Gaming Commission, Suffolk Downs and Plainridge Racetrack, Boston, MA |

| | |
|-----------------------------|---|
| January 2006 – Present | Adjunct Professor, University of Minnesota, College of Veterinary Medicine, St. Paul, MN |
| July 1991 – Present | Flying J Veterinary Clinic, PLLC, Equine and Llama Private Practice, Loretto, MN |
| September 1997 – July 2004 | Director, Veterinary Services, Prosar, St. Paul, MN |
| February 1992 – April 1997 | Veterinarian and Pharmacist, Minnesota Regional Poison Control Center and Hazardous Information Services, Minneapolis, MN |
| April 1994 – September 1994 | Assistant Racing Commission Veterinarian, Iowa Racing Gaming Commission, Prairie Meadows Racetrack, Des Moines, IA |
| July 1992 – April 1994 | Assistant Commission Veterinarian, Minnesota Racing Commission, Shakopee, MN |
| July 1990 – July 1991 | Veterinary Medicine Director, Equine Medicine, Equine Hospitals, Inc., Hastings, MN |
| July 1986 – July 1990 | Large Animal Internal Medicine Resident, University of Wisconsin, Madison, WI |
| July 1985 – July 1986 | Large Animal Intern, University of Georgia, Athens, GA |
| July 1980 – July 1982 | Staff Pharmacist, St. Paul Ramsey Medical Center and Regional Poison Control Center, St. Paul, MN |
| July 1978 – September 1981 | Pharmacist, Minnesota Correctional Facility for Woman, Shakopee, MN |
| June 1978 – July 1979 | Staff Pharmacist, University of Minnesota Hospitals, Minneapolis, MN |

ACADEMICS

- Course co-coordinator, CVM 6195 (Veterinary Toxicology), University of Minnesota College of Veterinary Medicine, St. Paul, MN; 2010 to present.
- Instructor, VPM 3101W (Animal Toxicology and the Environment), University of Minnesota, Veterinary Population Medicine, St. Paul, MN; 2013-2015.
- Lecturer, CVM 6753 (Advanced Equine Electives), University of Minnesota, College of Veterinary Medicine, St. Paul, MN; 2012 to present.
- Externship Preceptor, University of Minnesota, College of Veterinary Medicine, St. Paul, MN; 2010 to present

PROFESSIONAL ACTIVITIES

- American Association of Equine Practitioners - Task Force on Equine Medications (2013 to 2016)

- American Association of Equine Practitioners - Task Force on Bisphosphonates 2018
- American Association of Equine Practitioners - Racing Committee (2017 to 2019)
- American College of Veterinary Internal Medicine - Ruminant Training Committee Chair (2012-2015)
- American College of Veterinary Internal Medicine - Examination Review Committee (2012 to 2015)
- American College of Veterinary Internal Medicine - Examination Preparation Committee (2017)
- American College of Veterinary Internal Medicine - Abstract Review Committee (2010-2012; 2013 to 2017; 2022 to 2023)
- American College of Veterinary Internal Medicine - Past Chair, Credentials Committee
- American College of Veterinary Internal Medicine - Past Chair, Large Animal Program Committee
- American College of Veterinary Internal Medicine - Past Chair, Resident Training Committee
- American Quarter Horse Association – Animal Welfare Commission (2019 – present)
- Association of Racing Commissioners International - Drug Testing Standard Practices Committee (2012 to 2023)
- Association of Racing Commissioners International - Racing Regulatory Veterinarians Committee (2012 to 2023)
- Association of Racing Commissioners International - Standardbred Committee (2013 to 2023)
- Association of Regulatory Racetrack Veterinarians - ARCI Chair (2012 to 2019)
- Horseracing Integrity and Safety Authority Anti-Doping and Medication Control (ADMC) Standing Committee (June 2023 – present)
- Horse Racing Integrity and Safety Committee – Equine Sudden Death Working Group (2023)
- Journal of Bioequivalence & Bioavailability article reviewer (past)
- Journal of Veterinary Emergency Medicine and Clinical Care toxicology reviewer (current)
- Minnesota Equine Research Council - Grant Committee (2000-2004)
- Racing Medication and Testing Consortium - Board of Directors (2012 to 2023)
- Racing Medication and Testing Consortium - Communications Subcommittee (2015 to present)
- Racing Medication and Testing Consortium - Educational Committee (2019 to present)
- Racing Medication and Testing Consortium - External Quality Assessment Committee (2018 to present)
- Racing Medication and Testing Consortium – Quarter Horse Committee (2023)
- Racing Medication and Testing Consortium - Scientific Advisory Committee (2012 to present)
- Racing Medication and Testing Consortium - Tactical Review Committee (2013 to present)
- University of Minnesota Equine Grants Council (2004 to 2016)
- Welfare and Safety of Horse - On Track Injury Reporting Committee (2006 to 2008)

SCIENTIFIC ORGANIZATIONS

American Association of Equine Practitioners (AAEP)
 American College of Veterinary Internal Medicine (ACVIM)
 American Veterinary Medical Association (AVMA)
 Association of Regulatory Racetrack Veterinarians (ARRV)
 Florida Veterinary Medical Association (FVMA)
 Florida Association of Equine Practitioners (FAEP)
 Minnesota Equine Practitioners Association (MEPA)

PRESENTATIONS

Abstracts with Posters

- Brutlag AG, Hovda LR, Della Ripa RM. Corneal Ulceration in a Dog Following Walking Stick Envenomation, North American Clinical Toxicology Annual Scientific Meeting, Toronto, Canada, September 2008.
- Wilson J, Hovda LR. An Observational Study of Racehorse Swimming, 5th International Symposium on Rehabilitation and Physical Therapy in Veterinary Medicine, Minneapolis, MN, August 2008.
- Martinson K, Hovda LR, Murphy M. Plants Poisonous or Harmful to Horses, North Central Weed Science Society Annual Meeting, Milwaukee, WI, December 2006.
- Hovda LR, Kingston RL. Cacao Bean Mulch Poisoning in Dogs, AAPC/AACT/CAPCC Annual Scientific Meeting, Salt Lake City, UT, September 1994.
- Hovda LR, McManus AM. Yohimbine for Amitraz Poisoning in Dogs, AAPC/AACT/CAPCC Annual Scientific Meeting, New York City, NY, September 1993.
- Hovda LR, Rose ML. Hoary Alyssum (*Berteroa incana*) Toxicity in a Herd of Broodmares, AAPCC/AACT/CAPCC Annual Scientific Meeting, Tampa, FL, September 1992.
- Hovda LR, McGuirk SM. The Use of Parenteral Nutrition in Neonatal Llamas, Critical Care Nutritional Support in Large and Small Animal Patients: A Symposium, East Lansing, MI, October 1988.
- Hovda LR, McGuirk SM, Lunn DP. Total Parenteral Nutrition in the Neonatal Llama, Int Society of Veterinary Perinatologists' Biennial Meeting, Orlando, FL, January 1988.

Abstracts with Presentations

- Peterson K, Lee JA, Hovda LR. Phenylpropanolamine toxicosis in dogs: 170 cases (2004-2009). Int Vet Emerg Crit Care Society. September 2010.
- Gray S, Lee JA, Hovda L, Brutlag AG. Zinc phosphide rodenticide toxicosis in dogs: 362 cases (2004-2009). Int Vet Emerg Crit Care Society. September 2010.
- Hovda LR, McGuirk SM. Enteral Support to Critically Ill Neonatal Ruminants. Proceedings Critical Care Nutritional Support in Large and Small Animal Patients, 1988.
- Sweeney RW, Hovda LR, Divers TJ, et al. A Comparison of Parenteral Nutrition and Traditional Therapy in Calves with Diarrhea, Proceedings, Am Col Vet Int Med 1988.

Continuing Education Presentations – Local

- Equine Plant Toxicosis, DVM rounds, October 2018
- Holiday Toxins, U of M Small Animal Club, November 2016
- Equine Toxicosis, DVM rounds, April 2015
- Methionine, phenylpropanolamine, and other oldies but goodies, DVM rounds, November 2013.

- Common Equine Toxins. DVM rounds, July 2013.
- Poisonous Plants in Your Garden, Animal Care Foundation of Minnesota, May 2013.
- Toxicology Calculations 101, DVM rounds, January 2013 and March 2013.
- Plant toxins, Hovda LR. Minnesota Arboretum, June 2012.
- “Antique” Poisons in Your Garage and Basement, PPH CE for area practitioners, July 2012.
- Zoological Drug Toxicities, Hovda LR. Minnesota Arboretum, March 2006.
- Large and Small Animal Pyrethrin Toxicities, Hovda LR. Central Minnesota Society of Veterinarians, June 1992.
- Foaling Season 1991 - Are You Ready? Hovda LR. Heart O’Lakes Veterinary Association Winter Meeting, February 1991.
- Equine Rehabilitation Using the Wet/Dry Treadmill, Hovda LR, Gordon BG. SW Minnesota Veterinary Association, November 1990.
- Fluid Therapy in Neonatal Calves, Hovda LR. Coulee Region Veterinary Association Spring Meeting, May 1989.
- Intravenous Fluid and Electrolyte Therapy, Hovda LR. University of Wisconsin-Madison Postgraduate Conference, June 1988.
- Utilization of Intravenous Catheters, Hovda LR. University of Wisconsin-Madison Postgraduate Conference, June 1988.
- Abdominocentesis and Abdominal Drains, Hovda LR. University of Wisconsin-Madison Postgraduate Conference, June 1987.

Lay Presentations

- Plant Toxicities, Hovda LR. Minnesota Horse Expo, St. Paul, MN, April 2009.
- Pet Poisonings, Hovda LR. WCCO Radio Broadcast, Minneapolis, MN. August 2007.
- Therapy of Orphan Llamas, Hovda LR. Llamas of Minnesota Spring Meeting, Hastings, MN, March 1991.
- Your First Foal, Hovda LR. Minnesota Arabian Horse breeders’ Fall Meeting, St. Paul MN, November 1990.
- Equine Medicine, Hovda LR. On the Rail-Cable TV Broadcast, Minneapolis, MN, July 1990, August 1990, July 1991, September 1991, May 1992.
- You and Your Endurance Horse, Hovda LR. Midwest Horse Fair, Madison, WI, April 1987.
- A Foal’s First Year, Hovda LR. Student Chapter of AAEP - Annual Horsemen’s Conference, Madison, WI. May 1987.

Professional Presentations

- Hovda LR, Bischoff K, Puschner B, and Magdesian KG. VET PD Veterinary Professional Development. Equine Toxicosis Part 1. March 2023.
- Protecting the Welfare of Minnesota Racehorses. Minnesota State Bar Association, Animal Law Section, Minneapolis, MN, June 14, 2022.
- Equine Assessment in the Saddling Paddock. RMTC Regulatory Continuing Education Conference, Gulfstream Park, March 2022.
- Post-Race Assessment. RMTC Regulatory Continuing Education Conference, Santa Anita Racetrack, March 2-3, 2020.
- Equine Drug Testing, RMTC Regulatory Continuing Education Conference, Fort Lauderdale, FL, March 3-4, 2019.
- CBD Overview. ARCI Annual Meeting, Arcadia, CA, April 7, 2019.
- The Worst Things in Racing. RMTC Regulatory Continuing Education Conference, Lexington, KY, June 25, 2018.
- Paddock to the Starting Gate – Regulatory Veterinarian’s Role. Presentation and Panel Discussion. RMTC Regulatory Veterinarians Continuing Education Conference, Lexington, KY, June 25, 2018.
- Impacts of Weather – Equine Health and Business Decisions Panel Discussion, Arroyo E, Hovda LR, Johnston J, Sinatra S, Lexington, KY. June 27, 2018.
- Bisphosphonate Overview. ARCI annual meeting, Hot Springs, AR, April 4, 2018.
- Nomefensine – Is It a Regulatory Problem. Association of Racing Regulatory Veterinarians, San Antonio, TX, November 16, 2017.
- Compounded Medications, Hovda LR, Stanley S, Benson D. Welfare and Safety Summit, Lexington, KY, July 2, 2016.
- AAEP Racetrack Injury Management. NTRA 16 annual Track Superintendents Conference, Canterbury Park, Shakopee, MN. June 13, 2017.
- Compounded Medications, Hovda LR. ARCI annual meeting, Tampa, FL, April 20, 2015.
- Illegal and Seized Medications, Hovda LR. AORC annual meeting, Tampa, FL, April 21, 2015.
- Prerace Testing Program, Hartmann P, Hovda LR. AORC annual meeting, Tampa, FL, April 21, 2015.
- Top 10 Canine Toxins, Top 10 Feline Toxins. Hovda LR. North Texas District Veterinarians Association, Waco TX, November 2013.
- Pharmacokinetics Made Easy. Hovda LR. American College of Veterinary Internal Medicine. San Antonio, TX, November 2011.
- Piroplasmiasis, Where Are We? American Academy of Veterinary and Comparative Toxicology (AAVDL conference), Minneapolis, MN, November 2010.

- Topical Flea and Tick Control, Lebak J, Brutlag A, Hovda LR. Minnesota Veterinary Medicine Association annual meeting, Minneapolis, MN, February 2008.
- Rodenticides, Lebak J, Brutlag A, Hovda LR. Minnesota Veterinary Medicine Association annual meeting, Minneapolis, MN, February 2008.
- Racehorse Injuries, Wilson J, Hovda LR. 5th International Symposium on Rehabilitation and Physical Therapy in Veterinary Medicine, Minneapolis, MN, August 2008.
- Large Animal Toxicities, Hovda LR. Iowa Student Chapter of AAEP, Ames, IA, November 2006 and 2007.
- Around the Track at Canterbury, Hovda LR. Minnesota Veterinary Medicine Association Annual Meeting, Minneapolis, MN, February 2004.
- Heat Stroke, Hovda LR. Minnesota Student Chapter of AEPP, St. Paul, MN, September 2003.
- Equine Plant Toxicities, Hovda LR. Minnesota Veterinary Technicians Annual meeting, Minneapolis, MN, February 2003.
- Plant Toxicities – Common and Uncommon, Hovda LR. American College of Zoological Veterinarians Annual Meeting, Minneapolis, MN, November 2003.
- Common Small Animal Household Toxicities, Hovda LR. Minnesota Veterinary Technicians Annual Meeting, Minneapolis, MN, February 2002.
- Small Animal Plant Toxicities, Hovda LR. Minnesota Veterinary Technicians Annual Meeting, Minneapolis, MN, February 2002.
- Don't Wait Until You're Old to Wear Purple, Hovda LR. Minnesota Veterinary Technicians Annual Meeting, Minneapolis, MN, February 2002.
- Paraquat and Diquat Toxicity in Horses, Hovda LR. Am Col Vet Int Med 14th Annual Meeting. San Antonio, TX, May 1996.
- Common Plant Toxicities in Horses, Hovda LR. Am Col Vet Int Med 13th Annual Meeting. Orlando, FL, May 1995.
- Common Small Animal Plant Toxicities, Hovda LR. Am Col Vet Int Med 13th Annual Meeting. Orlando, FL, May 1995.
- Toxicological Problems in Small Ruminants, Hovda LR. Am Col Vet Int Med 12th Annual Meeting. San Francisco, CA, June 1994.
- Toxicosis from Common Household Agents, Hovda LR. Am Col Vet Int Med 10th Annual Meeting. Washington DC, May 1993.

- Immunodeficiency Diseases in Older Foals, Hovda LR. Am Col Vet Int Med 10th Annual Meeting. San Diego, CA, May 1992.
- Cephalosporins-Old, New, Investigational, Hovda LR. Am Col Vet Int Med 9th Annual Meeting. New Orleans, LA, May 1991.
- Current Concepts in Therapy of Orphan Llamas, Hovda LR. Am Vet Med Assoc Annual Meeting. Orlando, FL, July 1989.
- Equine Degenerative Myeloencephalopathy, Hovda LR. Am Vet Med Assoc Annual Meeting. Orlando, FL, July 1989.
- Diagnosis and Therapy of Foal Diarrhea, Hovda LR. Illinois Student Chapter of AAEP- Practitioners' Conference, Urbana IL, January 1988.
- Causes of Abdominal Distress in the Foal, Hovda LR, Am Vet Med Assoc Annual Meeting. Chicago, IL, July 1987.
- Foal Diarrhea, Hovda LR. Am Vet Med Assoc Annual Meeting. Chicago, IL, July 1987.

PUBLICATIONS

Non-Referred Publications

- DiPietro R, Hovda LR. Exotic Animal Poisonings, RVTJ 42(2); 21-23, Winter 2018
- Hovda LR. Farm Animal Toxins, Part two, RVTJ 42(1); 17-23, Fall 2018.
- Hovda LR. Farm Animal Toxins, Part one: Plants and Mycotoxins, RVTJ 41 (4), 19-21, Summer 2018.
- Hovda LR. Xylitol Toxicosis in Small Animals, RVTJ, Winter 2017.
- Marijuana Toxicosis in Small Animals, RVTJ, Winter 2016.
- Hovda LR. Battery Toxicosis in Dogs. RVTJ, Fall, 2016.
- Hovda LR. Oleander Toxicity. DVM 360, April 2016.
- Hovda LR. Hoary Alyssum Toxicosis in Horses. DVM 360, January 2016.
- Hovda LR. Common Drug Store Toxins, RVTJ, Spring 2016.
- Hovda TK, Hovda LR. Carbon Monoxide Poisoning, RVTJ 2015; 39(2):
- Hovda LR. Tremorgenic Mycotoxins, RVTJ 2015; 39(1): 32
- Hovda LR. Lilies and Kitties. RVTJ 2015; 38(4): 15
- Hovda LR. Blue Green Algae (*Cyanobacteria*). RVTJ 2014; 37(4): 30-31.

- Hovda TK, Hovda LR. Soaps, Detergents, and Fabric Softeners. RVTJ 2014; (38(1): 32-36.
- Hovda LR, Methionine Toxicosis in Dogs. RVTJ 2014; 37(3): 36-37.
- Hovda LR, Holiday Equine Toxins, Saddle and Stirrups, November 2013.
- Hovda LR, Five Plants Poisonous to Horses, Saddle and Stirrups, May 2013.
- Hovda LR, Five Trees Poisonous to Horses, Saddle and Stirrups, June 2013.
- Hovda TK, Hovda LR. Canine poisons in the tack trunk. Can Tech News, Dec 2013.
- Dee T, Hovda LR. Cholecalciferol toxicosis. Veterinary Technician 2012: E1-E4.
- Hovda LR. Protect horses from heat exhaustion and heat stroke. DVM 360, July 2011.
- Hovda LR. Top 5 poisonous plants to avoid in horses! Part I Sept 1, 2010. <http://veterinaryteam.dvm360.com/firstline/article/articleDetail.jsp?id=684956>.
- Hovda LR. Top 5 poisonous plants to avoid in horses! Part II November 22, 2010. <http://veterinaryteam.dvm360.com/firstline/article/articleDetail.jsp?id=697054>.
- Martinson K, Murphy M, Hovda LR, et al. Common Pasture Plants. Minnesota Extension Service publication, 2009.
- Martinson K, Hovda LR, Murphy M. Plants Toxic to Horses. Minnesota Extension Service publication, 2007.
- Hovda LR. Paraquat and diquat toxicity in horses. Proc Am Col Vet Int Med 1996; 14:526-528.
- Hovda LR. Common plant toxicities in horses. Proc Am Col Vet Int Med 1995; 13:568-570.
- Hovda LR. Plants toxic to dogs and cats. Proc Am Col Vet Int Med 1995; 13:617-619.
- Hovda LR. Toxicological problems in small ruminants. Proc Am Col Vet Int Med 1994; 12:645-648.
- Hovda LR. Herbicide toxicities in large animals. Proc Am Col Vet Int Med 1994; 12:546-548.
- Hovda LR. Toxicities from common household agents. Proc Am Col Vet Int Med 1993; 11:282-285.
- Hovda LR. Immunodeficiency diseases in older foals. Proc Am Col Vet Int Med 1992; 10:427-429.
- Hovda LR. Failure of passive transfer in llamas. Llamas of Minnesota Spring Newsletter 1991; 4:3.
- Hovda LR. Cephalosporins - old, new, and investigational. Proc Am Col Vet Int Med 1991; 9:489-492.
- Hovda LR, McGuirk SM. Oral fluid therapy in neonatal calves. UWVMT, Newsletter 1989.

- Duerst G, Hovda LR. Equine intravenous catheters. *Veterinary Technician* 1989; 10:516-519.
- Hovda LR, McGuirk SM. Choosing an appropriate oral electrolyte solution for use in diarrheic calves. *Int Soc of Vet Perinatology Newsletter* 1988; 1:5-6.

Refereed Publications

- Schmid RD, Lombardo D, Hovda LR. Suspected Intermediate Syndrome in a Dog after Organophosphate Poisoning. *J Vet Emerg Crit Care* 2023; 33(6): 705-709.
- Becker J, Brutlag A, Hovda LR. A retrospective evaluation of hops ingestion in 177 dogs (2005-2018) *J Vet Emerg Crit Care* 2023; 33(3):348-353.
- Carpenter MM, Hovda LR. Alpha lipoic acid toxicosis in cats (2008-2016): Four cases. *J Vet Emerg Crit Care* 2022; 32(2):249-253.
- Handley HG, Hovda LR. Risks of exposure to liquid laundry detergent pods compared to traditional laundry detergents in dogs. *J Vet Emerg Crit Care* 2021; 3(31):396-401.
- Knych HK, McKemie DS, Seminoff K, Hartmann P, Hovda LR, Benson D. L- and D-threo ethylphenidate concentrations, pharmacokinetics, and pharmacodynamics in horses. *Drug Test Anal.* 2018;1–10.
- Schmid RD, Hovda LR. Mirabegron Toxicosis in Dogs: a Retrospective Study. *Journal of Medical Toxicology* 2018; 18:1-8.
- Schmid RD, Hovda LR. Acute Hepatic Failure in a Dog after Xylitol Ingestion. *Journal of Medical Toxicology* 2015; 21:1-5.
- Pugh CM, Lee JA, Bloch CP, Sweeney J, Hovda LR. Selective Serotonin Reuptake Inhibitor (SSRI) toxicosis in cats: 33 cases (2004-2010). *J Vet Emerg Crit Care* 2013; 23(5): 565-567.
- Khorzad R, Lee JA, Hovda LR, Whelan M, et al. Baclofen toxicosis in dogs and cats: 145 cases (2004-2010). *J Am Vet Med Assoc* 2012; 241(8): 1059-1064.
- Reinker LN, Lee JA, Hovda LR, Rishniw M. Cardiovascular abnormalities secondary to pimobendan toxicosis in 5 of 7 dogs. *J Amer Hosp Assoc* 2012; 48: 1-6.
- Thomas D, Lee JA, Hovda LR. Selective serotonin reuptake inhibitor toxicosis in dogs: 350 cases (2004-2010) *J Vet Emerg Crit Care* 2012; 22(6): 674-691.
- Lancaster A, Lee JA, Hovda LR, et al. Sleep aid toxicosis in dogs: 317 cases (2004-2010). *J Vet Emerg Crit Care* 2011; 21(6): 658-665.
- Novotney TE, Hardin SN, Hovda LR, et al. Tobacco and cigarette butt consumption in animals and humans. *Tobacco Control* 2011; 20S1: 117-20.
- Gray S, Lee J, Hovda LR, Brutlag A. Zinc phosphide rodenticide toxicosis in dogs: 362 cases (2004-2009). *J Am Vet Med Assoc* 2011; 239(5): 646-651.

- Peterson K, Lee JA, Hovda LR. Potential phenylpropanolamine toxicosis in dogs: 170 cases (2004-2009). *J Am Vet Med Assoc* 2011; 239(11): 1463-1469.
- Fernandez AL, Lee JA, Rahilly L, Hovda LR, Brutlag AB, Engebretsen K. The use of intravenous lipid emulsions as an antidote in toxicology: a review. *J Vet Emerg Crit Care* 2011; 21(4): 309-320.
- Brutlag A, Hovda LR. Corneal ulceration in a dog following exposure to the defensive spray of a walkingstick insect (*Anisomorpha* spp). *J Vet Emerg Crit Care*. 2011; 21(4): 382-386.
- Kaplan MI, Lee J, Hovda LR, Brutlag A. Acute neurotoxicity due to accidental intravenous procaine penicillin G administration in 1 cat and 2 dogs. *J Am Vet Med Assoc* 2011; 239(5): 646-651.
- Hovda LR. Toxicities from common household agents. *Small Animal Clinician*. 1994; 6:1-21.
- Hovda LR, Rose ML. Hoary Alyssum (*Berteroa Incana*) toxicity in a herd of broodmare horses. *Vet Human Tox* 1993; 35:39-40.
- Hovda, LR. Immunodeficiency diseases in older foals. *Equine Practice* 1993; 24-27.
- Hovda LR, McManus AM. Yohimbine for amitraz toxicity in dogs. *Vet Human Tox* 1993; 35:329.
- Geor R, Becker R, Kanara E, Hovda LR, et al. The toxicity of hoary alyssum (*Berteroa incana*) to horses. *J Am Vet Med Assoc* 1992; 201:63-67.
- Hovda LR, McGuirk SM, Lunn DP. Total parenteral nutrition in a neonatal llama. *J Am Vet Med Assoc* 1990; 196:319-322.
- Hovda LR, Shaftoe S, Rose ML, et al. Mediastinal squamous cell carcinoma and thyroid carcinoma in an aged horse. *J Am Vet Med Assoc* 1990; 197:1187-1189.
- Trim CM, Adams JG, Hovda LR. Failure of xylazine to induce anesthesia in two horses. *J Am Vet Med Assoc* 1987; 190:201-202.

TEXTBOOKS

Editor, Section Editor

- Hovda LR, Brutlag A, Poppenga B, Epstein S. Eds. *Blackwell's Five-Minute Veterinary Consult Clinical Companion: Small Animal Toxicology*. 3rd edition. Ames, IA: Wiley-Blackwell; in press.
- Hovda LR, Benson D, Poppenga RH. *Blackwell's Five-Minute Veterinary Consult Clinical Companion: Equine Toxicology*. Hoboken, NJ: Wiley-Blackwell; 2022.
- Hovda LR, Section Editor, Toxicology; *Blackwell's Five-Minute Veterinary Consult: Canine and Feline*, 7th ed. Oxford, UK: Wiley-Blackwell; 2021.

- Hovda LR, Consulting and Section Editor, Toxicology; *Large Animal Internal Medicine*, 6th ed. St. Louis, MO: Elsevier; 2019
- Hovda LR, Brutlag A, Poppenga R, Peterson K. Eds. *Blackwell's Five-Minute Veterinary Consult Clinical Companion: Small Animal Toxicology*. 2nd edition, Wiley-Blackwell. 2016.
- Hovda LR, Section Editor, Toxicology; *Blackwell's Five-Minute Veterinary Consult: Canine and Feline*, 6th ed. Oxford, UK: Wiley-Blackwell; 2016.
- Hovda LR, Toxicology Editor, *Veterinary Medicine – a textbook of diseases of cattle, horses, sheep, pigs and goats*, 11th ed. St. Louis, MO: Elsevier; MO; 2017.
- Hovda LR, Consulting and Section Editor, Toxicology; *Large Animal Internal Medicine*, 5th ed. St. Louis, MO: Elsevier; 2015.
- Osweiler G, Hovda, L, Brutlag A, Lee JA. Eds. *Blackwell's Five-Minute Veterinary Consult Clinical Companion: Small Animal Toxicology*. Wiley-Blackwell. 2010.

Author, Textbook Chapters

- Hovda LR. Therapeutic Drugs, Supplements, and Illicit Drugs. *Vet Clin NA Equine Toxicology*; 2023, Nov 9, ahead of publication.
- Hovda LR. Antidotes and Other Useful Drugs. In: Hovda LR, Brutlag A, Poppenga R, Epstein S, Eds. *Blackwell's Five-Minute Veterinary Consult Clinical Companion: Small Animal Toxicology*, 3rd ed. Ames, IA: Wiley-Blackwell, 2024; in press.
- Hovda LR. Insoluble Oxalate Containing Plants. In: Hovda LR, Brutlag A, Poppenga R, Epstein S, Eds. *Blackwell's Five-Minute Veterinary Consult Clinical Companion: Small Animal Toxicology*, 3rd ed. Ames, IA: Wiley-Blackwell, 2024; in press.
- Hovda LR. Oxalate Containing Plants. In: Hovda LR, Brutlag A, Poppenga R, Epstein S, Eds. *Blackwell's Five-Minute Veterinary Consult Clinical Companion: Small Animal Toxicology*, 3rd ed. Ames, IA: Wiley-Blackwell, 2024; in press
- Hovda LR. Amphetamines and ADHD Drugs. In: *The Merck Veterinary Manual*, ed. 12. United Kingdom, Elsevier; in press.
- Recreational Drugs. In: *The Merck Veterinary Manual*, ed. 12. United Kingdom, Elsevier; in press.
- Hovda LR. Oak (*Quercus* spp.). In: *Blackwell's Five-Minute Veterinary Consult Clinical Companion: Equine Toxicology*. Hoboken, NJ: Wiley-Blackwell; 2022.
- Hovda LR, Rippel S. Bromethalin. In: *Blackwell's Five-Minute Veterinary Consult Clinical Companion: Equine Toxicology*. Hoboken, NJ: Wiley-Blackwell; 2022.
- Hovda LR. Hoary Alyssum (*Berteroa incana*). In: *Blackwell's Five-Minute Veterinary Consult Clinical Companion: Equine Toxicology*. Hoboken, NJ: Wiley-Blackwell; 2022.

- Hovda LR. Cardiotoxic Plants. In: *Blackwell's Five-Minute Veterinary Consult Clinical Companion: Equine Toxicology*. Hoboken, NJ: Wiley-Blackwell; 2022.
- Hovda LR. Sodium Chloride (Salt). In: *Blackwell's Five-Minute Veterinary Consult Clinical Companion: Equine Toxicology*. Hoboken, NJ: Wiley-Blackwell; 2022.
- Hovda LR. Treating An Intoxicated Animal: Antidotes and Therapeutic Medications. In: *Blackwell's Five-Minute Veterinary Consult Clinical Companion: Equine Toxicology*. Hoboken, NJ: Wiley-Blackwell; 2022.
- Hovda LR. Cardiac Glycoside Plant Toxicosis. *Blackwell's Five-Minute Veterinary Consult: Canine and Feline*, 7th ed. Oxford, UK: Wiley-Blackwell; 2021.
- Hovda LR. Insoluble Oxalate Plant Toxicosis. In: *Blackwell's Five-Minute Veterinary Consult: Canine and Feline*, 7th ed. Oxford, UK: Wiley-Blackwell; 2021.
- Hovda LR. Managing Large Animal Poisonings. In: Smith BS, ed. *Large Animal Internal Medicine*, 6th ed. St. Louis, MO: 2019.
- Hovda LR. Agricultural Chemicals. In: *Blackwell's Five-Minute Veterinary Consult: Ruminant*, 2nd ed. Haskell, Tibary, and Chase, eds. 2017; 27-28.
- LeMaster S, Hovda LR. Medical Waste Management: Expired Drugs In: *Blackwell's Five-Minute Veterinary Consult: Ruminant*, 2nd ed. Haskell, Tibary, and Chase, eds. 2017; 910-911.
- Hovda LR. Euthanasia and Disposal. In: *Blackwell's Five-Minute Veterinary Consult: Ruminant*, 2nd ed. Haskell, Tibary, and Chase, eds. 908-909.
- Hovda LR. Household Cleaners, disinfectants, and solvents. In. *Blackwell's Five-Minute Veterinary Consult: Canine and Feline*, 6th ed. Oxford, UK: Wiley-Blackwell; 2016; pp. 1435-1439.
- Osweiler GD, Hovda LR. Toxic plants and their clinical signs – antidotes and treatment. In. *Blackwell's Five-Minute Veterinary Consult: Canine and Feline*, 6th ed. Oxford, UK: Wiley-Blackwell; 2016; pp. 1427-1432.
- Hovda LR. Cardiac Glycoside Plant Toxicosis. In. *Blackwell's Five-Minute Veterinary Consult: Canine and Feline*, 6th ed. Oxford, UK: Wiley-Blackwell; 2016; pp. 225.
- Hovda LR. Insoluble Oxalate Plant Toxicosis. In. *Blackwell's Five-Minute Veterinary Consult: Canine and Feline*, 6th ed. Oxford, UK: Wiley-Blackwell; 2016; pp755.
- Hovda LR. Antidotes and Other Useful Drugs. In: Hovda LR, Brutlag A, Poppenga R, Peterson K, *Blackwell's Five-Minute Veterinary Consult Clinical Companion: Small Animal Toxicology*, 2nd ed. Ames, IA: Wiley-Blackwell, 2016; pp. 36-48.

- Osweiler G, Hovda LR. Toxic Plant Tables. In: Osweiler G, Hovda LR, Brutlag A, Lee JA, eds. *Blackwell's Five-Minute Veterinary Consult Clinical Companion: Small Animal Toxicology*, 1st ed. Ames, IA: Wiley-Blackwell, 2010; pp. 835-839.
- Garland T, Hovda LR. Gossypol Toxicosis. In: Murphy L, ed. *Large Animal Toxicology*. Ames, IA: Wiley-Blackwell; in progress.
- Hovda LR, Bufo Toad Toxicosis. In: Murphy L, ed. *Large Animal Toxicology*. Ames, IA: Wiley-Blackwell; in progress.
- Hovda LR, Non-steroidal anti-inflammatory drug toxicosis. In: Murphy L, ed. *Large Animal Toxicology*. Ames, IA: Wiley-Blackwell; in progress.
- Hovda LR, Drugs of Abuse in Performance Horses. In: Murphy L, ed. *Large Animal Toxicology*. Ames, IA: Wiley-Blackwell; in progress.
- Hovda LR, Medications and Therapeutic Agents. In Smith BS, ed. *Large Animal Internal Medicine*, 5th ed. St. Louis, MO: Elsevier; 2015; pp. 1607-1608.
- Hovda LR. Managing Large Animal Poisonings. In: Smith BS, ed. *Large Animal Internal Medicine*, 5th ed. St. Louis, MO: 2015; pp. 1578-1579.
- Hovda LR. Effective Use of an Animal Poison Control Center. In: Peterson ME, Talcott PA, eds. *Small Animal Toxicology*, 3rd ed. St. Louis, MO: Elsevier, 2013; pp. 27-29.
- Hovda LR. Antidotes and Other Useful Drugs. In: Osweiler G, Hovda LR, Brutlag A, Lee JA, eds. *Blackwell's Five-Minute Veterinary Consult Clinical Companion: Small Animal Toxicology*, 1st ed. Ames, IA: Wiley-Blackwell, 2010; pp. 39-49.
- Osweiler G, Hovda LR. Toxic Plant Tables. In: Osweiler G, Hovda LR, Brutlag A, Lee JA, eds. *Blackwell's Five-Minute Veterinary Consult Clinical Companion: Small Animal Toxicology*, 1st ed. Ames, IA: Wiley-Blackwell, 2010; pp. 835-839.
- Peterson M, Hovda LR. Bufo Toads. In: Osweiler G, Hovda LR, Brutlag A, Lee JA, eds. *Blackwell's Five-Minute Veterinary Consult Clinical Companion: Small Animal Toxicology*, 1st ed. Ames, IA: Wiley-Blackwell, 2010; pp. 376-381.
- Hovda LR, Cargill E. Oxalates - Soluble. In: Osweiler G, Hovda LR, Brutlag A, Lee JA, eds. *Blackwell's Five-Minute Veterinary Consult Clinical Companion: Small Animal Toxicology*, 1st ed. Ames, IA: Wiley-Blackwell, 2010; pp. 730-736.
- Hovda LR, Cargill E. Oxalates - Insoluble. In: Osweiler G, Hovda LR, Brutlag A, Lee JA, eds. *Blackwell's Five-Minute Veterinary Consult Clinical Companion: Small Animal Toxicology*, 1st ed. Ames, IA: Wiley-Blackwell, 2010; pp. 720-729.
- Cargill E, Hovda LR. Rhododendrons and azaleas. In: Osweiler G, Hovda LR, Brutlag A, Lee JA, eds. *Blackwell's Five-Minute Veterinary Consult Clinical Companion: Small Animal Toxicology*, 1st ed. Ames, IA: Wiley-Blackwell, 2010; pp. 737-742.

- Martinson K, Hovda LR. Yews. In: Osweiler G, Hovda LR, Brutlag A, Lee JA, eds. *Blackwell's Five-Minute Veterinary Consult Clinical Companion: Small Animal Toxicology*, 1st ed. Ames, IA: Wiley-Blackwell, 2010; pp. 750-755.
- Martinson K, Hovda LR. Lilies. In: Osweiler G, Hovda LR, Brutlag A, Lee JA, eds. *Blackwell's Five-Minute Veterinary Consult Clinical Companion: Small Animal Toxicology*, 1st ed. Ames, IA: Wiley-Blackwell, 2010; pp. 705-710.
- Hovda LR. Miscellaneous Hallucinogens and Dissociative Agents. In: Osweiler G, Hovda LR, Brutlag A, Lee JA, eds. *Blackwell's Five-Minute Veterinary Consult Clinical Companion: Small Animal Toxicology*, 1st ed. Ames, IA: Wiley-Blackwell, 2010; pp. 237-244.
- Hovda LR. Opiates and Opioids. In: Osweiler G, Hovda LR, Brutlag A, Lee JA, eds. *Blackwell's Five-Minute Veterinary Consult Clinical Companion: Small Animal Toxicology*, 1st ed. Ames, IO: Wiley-Blackwell, 2010; pp. 245-253.
- Hovda LR. Common Plant Toxicities. In: Ettinger SJ and Feldman EC, eds. *Textbook of Veterinary Internal Medicine: Diseases of the Dog and Cat*, 7th ed. St. Louis, MO: Elsevier, 2010.
- Hovda LR. Street Drug Toxicity. In: Ettinger SJ and Feldman EC, eds. *Textbook of Veterinary Internal Medicine: Diseases of the Dog and Cat*, 7th ed. St. Louis, MO: Elsevier, 2010.
- Hovda LR, Murphy M. Toxin Exposures in Small Animals. In: Bonagura JD and Twedt DC, eds. *Current Veterinary Therapy XIV*, Saunders Elsevier, St. Louis, MO, 2008; pp. 92-94.
- Hovda LR. Common Plant Toxicities. In: Ettinger SJ, Feldman EC, eds. *Textbook of Veterinary Internal Medicine*, 6th edition. Philadelphia, PA: WB Saunders, 2005; pp. 250-253.
- Hovda LR, Hooser S. Toxicology of Newer Pesticide Agents. *Veterinary Clinics of North America, Small Animal Practice*, Philadelphia, PA: WB Saunders, 2002; pp. 455-467.
- Hovda LR. Common Plant Toxicities. In: Ettinger SJ, Feldman EC, eds. *Textbook of Veterinary Internal Medicine*, 5th edition. Philadelphia, PA: WB Saunders, 2000; pp. 363-365.
- Hovda LR, McGuirk SM. Alimentation of the Clinically Ill Neonatal Ruminant. In: Ralston S, Naylor JM, eds. *Large Animal Clinical Nutrition*. St. Louis, MO: CV Mosby Company, 1991; pp. 397-404.
- Hovda LR, Shaftoe S. The Llama Industry: Feeding systems and special feeding requirements. In: Ralston S, Naylor JM, eds. *Large Animal Clinical Nutrition*. St. Louis, MO: CV Mosby Company, 1991; pp. 357-362.
- Hovda LR, Shaftoe S. Common Nutritional Problems in Llamas. In: Ralston S, Naylor JM, eds. *Large Animal Clinical Nutrition*. St. Louis, MO: CV Mosby Company, 1991; pp 363-366.
- Hovda LR. Neonatal Septicemia. In: Robinson NE, ed. *Current Therapy in Equine Medicine 3*. Philadelphia, PA: WB Saunders Company, 1991; pp. 435-442.

USDA APHIS ACCREDITATION LEVEL 2 (CURRENT)

PHARMACY LICENSES (CURRENT)

Minnesota
North Dakota

VETERINARY LICENSES (CURRENT)

Florida
Iowa
Massachusetts
Minnesota
North Dakota
Wisconsin

Item 9 –
Appointment of 2024
Board of Judges

Item 10 –
Appointment of
2024 Board of
Stewards

Item 11 –
Thoroughbred and
Quarter Horse Purse
Supplement Allocation
for 204



February 6, 2024

Mr. Kyle Gustafson
Executive Director
Minnesota Racing Commission
1100 Canterbury Road
Shakopee, MN 55379

RE: 2024 Thoroughbred and Quarter Horse Purse Supplement Approval Request

Canterbury Park hereby presents the following recommendations from the Minnesota Thoroughbred and Quarter Horse Breeders' Advisory Fund Committees and requests that these be presented to the full Minnesota Racing Commission on February 15:

Minnesota Thoroughbred Breeders' Fund Advisory Committee:

- 1) Approval to pay Thoroughbred Purse Supplements in accordance with MN 7895.011 Subp. 5. Payments to be made at the same time as purses are earned.
- 2) Approval of a 20% supplement for Minnesota-bred thoroughbreds running in open-company overnight races, consistent with 2023. (Estimated Expenditure \$280,000).
- 3) Approval of a \$4,000 supplement for Minnesota-bred thoroughbreds running in Minnesota-bred restricted Maiden Special Weight and Allowance races, consistent with 2023. (Estimated Expenditure \$200,000).
- 4) Approval of a 10% supplement for all Minnesota-bred thoroughbreds running in open-company stakes races, consistent with 2023. (Estimated Expenditure \$10,000).
- 5) Approval of a 10% supplement for all Minnesota-sired and foaled thoroughbreds running in Minnesota-bred stakes races, consistent with 2023. (Estimated Expenditure \$5,000).

Total Estimated Expenditure = \$495,000

Minnesota Quarter Horse Breeders' Fund Advisory Committee:

- 1) Approval to pay Quarter Horse Purse Supplements in accordance with MN 7895.011 Subp. 5. Payments to be made at the same time as purses are earned.
- 2) Approval of \$5,000 to be paid in each the Minnesota Quarter Horse Futurity and the Minnesota Quarter Horse Derby, a decrease from 2023. (Estimated Expenditure \$10,000).
- 3) Approval of a \$3,000 supplement for Minnesota-bred quarter horses running in open-company overnight races, a decrease from 2023. (Estimated Expenditure \$12,700).

Total Estimated Expenditure = \$22,700

Both of these requests fall slightly under the revenue amounts Canterbury Park anticipates paying into these funds, as required by MN §240 for card-playing activity between November 1, 2023 – October 31, 2024 based on our budgeted card casino revenue. Thus, I think they are prudent and do not put either account in a challenging financial condition.

Please let me know should you require any additional information in regard to these requests.

Sincerely,

A handwritten signature in black ink that reads "Amber Carlisle". The signature is written in a cursive, flowing style.

Amber Carlisle
Racing Operations Manager
Canterbury Park Entertainment, LLC

Item 12 –
Authorizing Resolution
to Proceed with
Rulemaking and Publish
Rules RD 04816

Proposed Rule Changes and Addition

February 2024

7869.0100 DEFINITIONS

Subp. 49a. Pylons

Poles marking the inner surface of the racetrack. The poles are white with the top 4 inches a darker color.

Subp. 51a. Racing day.

"Racing day" for Thoroughbred horses and Quarter Horses means a day assigned by the commission on which racing is conducted and shall include no fewer than ~~eight~~ seven live races. "Racing day" for Standardbred horses means a day assigned by commission on which racing is conducted and shall include no fewer than eight live races. If environmental conditions, a power or technology failure, or a shortage of horses forces the cancellation of races to the extent that no fewer than seven races for Thoroughbred horses and Quarter Horses and no fewer than eight races for Standardbred horses can be held in a single day, the day is still considered a racing day as long as the canceled races are added to one or more subsequent racing cards held within 30 days of the cancellation. For purposes of this subpart, "shortage of horses" means that one or more proposed races for the day were unable to generate at least a five-horse field and therefore could not be carded. No more than 14 live races shall be conducted in a single day unless approved by the stewards and the executive director.

7873.0188 Subp. 7

Restrictions on superfecta races. In no event shall superfecta wagering be allowed with fewer than ~~five~~ six betting interests. If for any reason superfecta wagering is canceled, all superfecta wagers must be refunded.

7877.0170 DUTIES AND RESPONSIBILITIES OF CLASS C LICENSEES

Subp. 9. Veterinarians

L. The commission shall report any rulings or violations involving a veterinarian to the Minnesota Board of Veterinary Medicine and initiate a complaint with the Minnesota Board of Veterinary Medicine against a veterinarian **provisionally suspended by the Horseracing Integrity Welfare Unit and after all the appeals have been exhausted** or determined to have acquired or administered a Class 1 substance contained in the Association of Racing Commissioners International (ARCI) Uniform Classification Guidelines for Foreign Substances and Recommended Penalty Rule or the Horseracing Integrity Welfare Unit list of prohibited substances.

O. Veterinarians and veterinary assistants must sign in and out on a form prescribed by the commission at the stable gate each time the veterinarian or veterinary assistant enters or leaves the grounds of the racetrack.

Subp. 9a. Veterinary assistants

B. Veterinary assistants shall not:

- (1) diagnose disease, lameness, or illness;
- (2) provide a prognosis;
- (3) prescribe any treatments, drugs, medications, or appliances;
- (4) dispense, compound, or mix drugs or medications;
- (5) perform surgery;
- (6) draw blood;
- (7) place catheters, needles, swabs, or tubes of any kind in any body part of the horse;
- (8) apply splints, slings, or tourniquets;
- (9) administer injectable medications including rabies vaccine; ~~or~~
- (10) sign the veterinarian's daily log; **or**
- (11) have contact with an entered horse within 24 hours of the race in which the horse was entered.

Subp. 9b. Equine masseuse.

The following shall apply to an equine masseuse licensed by the commission.

A. An individual licensed as an equine masseuse shall not:

- (1) diagnose disease, lameness, or illness;
- (2) provide a prognosis;
- (3) prescribe any treatments, drugs, medications, or appliances or administer medications;
- (4) dispense, compound, or mix drugs or medications;
- (5) perform surgery;
- (6) draw blood;
- (7) place catheters, needles, swabs, or tubes of any kind in any body part of the horse;
- (8) apply splints, slings, or tourniquets; ~~or~~
- (9) administer injectable medications; **or**
- (10) have contact with an entered horse within 24 hours of the race in which the horse was entered.

7877.0175 DUTIES AND RESPONSIBILITIES OF RACING OFFICIALS.

Subp 8. Commission Veterinarian

Subp. 8a. Commission Veterinarians must be licensed and in good standing with the Minnesota Board of Veterinary Medicine.

Subp. 8b. Veterinarian's list.

A. A commission veterinarian shall maintain a list of horses that:

- (1) are scratched because of illness, injury, or unsoundness;
- (2) are pulled up because of lameness or other injury during a race;
- (3) are bleeders, pursuant to part [7890.0140](#), subpart 1;
- (4) test positive for a prohibited substance or medication overage;
- (5) have received a medication or treatment invoking a mandatory stand-down time;
- (6) are Thoroughbred horses that have received an intraarticular injection pursuant to HISA rule 2240, 3(IV);
- (67) are barred from racing for the life of the horse;
- (78) have been treated with shock wave therapy; and
- (89) are otherwise considered unfit to race in the professional judgment of a commission veterinarian.

7883.0100 ENTRIES AND SUBSCRIPTIONS

Subpart 6, Prohibited entries

K. enter a horse that, as of January 1 of the calendar year, is a six-year-old or older maiden or a horse that has not started in ~~two~~ ~~three~~ or more years.

L. Enter a horse where all requirements to compete in the entered race are not completed. This includes HISA registration for Thoroughbreds.

Subpart 8A Changing of Races.

Subpart 8B Cancellation and postponement.

In the case of questionable racetrack or racing conditions due to weather, the HISA Safety Director shall call a meeting of the Chief Commission Veterinarian, Chief Steward, Agent of the Racetrack, and Horseperson's Representative to determine if cancellation or postponement of races is necessary. The HISA Safety Director has the final authority to cancel or postpone races.

Subpart 9. **Closing of entries.** When an hour for closing is designated, entries and declarations for sweepstakes may not be considered if received afterwards. If an hour is not designated, entries and declarations may be mailed or ~~telegraphed~~ ~~tele~~ ~~facsimiled~~ up to midnight of the day of closing, provided they are received in time for compliance with every other condition of the race.

Subpart 10. **Loss of entries.** A person who alleges loss of an entry or declaration in a stakes race must provide satisfactory proof that it was mailed or ~~telegraphed~~ ~~tele~~ ~~facsimiled~~ within a reasonable time before the designated time for closing or it shall not be considered received.

Subpart 11. Drawing of entries.

A. When entries exceed the permitted number of starters, the number of starters shall be reduced to the proper number by ~~lot~~ using the Association's established Preference Date System. ~~Lots may be drawn~~ The number of starters shall be reduced to the proper number for the entire race or for each division of the race at the option of the association.

Subpart 16. Workout requirements.

C. A first-time starter less than four years of age must have gate approval and a minimum of two timed workouts, one of which must be out of the gate, no more than 60 days prior to and **no less than 48 hours before the race in which it is entered.**

D. A first-time starter four years of age or older must have gate approval **no more than 60 days prior to the race in which it is entered,** and a minimum of three timed workouts, at least one of which must be out of the gate **no more than 60 days prior to the race in which it is entered,** and one of which must be an official timed workout observed and approved by a commission veterinarian, no more than 45 days prior to the race for which the horse is entered, **and no less than 48 hours before the race in which it is entered.**

Subpart 17. Refused entries. The nominations and entries of any person or transfer of any nomination or entry may be refused by the association. ~~for any reasonable cause.~~

7883.0110 PREFERENCE SYSTEM.

Subpart 2. In-today horses. When a horse is entered on one day and has an opportunity to start other than in a stakes race **or as a main-track-only entry** and is also entered for a following race day, the second entry will be an “in-today” and will not be considered unless the race underfills, nor will such horse be considered on the preferred list.

7883.0120 SCRATCHES AND NONSTARTERS.

Subpart 1a. Stewards must approve scratching horses.

A. No horse may be scratched from a race without permission of **the** stewards.

Subpart 1c. Drawing horses into a race from also-eligible list.

B. ~~For a race with turns, the~~ Horses drawing into the race from the also-eligible list must start in the outermost post position.

7883.0140 CLAIMING RACES.

Subpart 7. Invalid claims.

B. the claimant does not have at least the amount of the claim and any applicable tax **or fee** on deposit or credited with the horsepersons’ bookkeeper.

7883.0160 POST TO FINISH

Subpart 14. Horse becomes disabled or otherwise unable to finish.

E. The stewards shall be notified after euthanasia has been performed.

7884.0125 ENTERING AND DRAWING OF HORSES AT CLASS D FACILITIES.

The entering and drawing of horses at Class D licensed facilities shall be governed by the following:

K. At the time of entry all requirements to compete in the entered race must be completed.

7884.0190 QUALIFYING RACES.

Subp.2. F. ~~A horse adding or removing hobbles regardless of gait. However, if a horse that previously qualified with hobbles fails to qualify without hobbles, the horse shall remain qualified to race with hobbles. If a horse previously qualified without hobbles and fails to qualify with hobbles, the horse shall remain qualified to race without hobbles.~~

7884.0240 POST TIME AND STARTING

Subp. 8. Determination of a fair start.

- A. A fair start pole shall be erected at a point before the start that is clearly identifiable. The pole shall be distinctive in color in relation to existing pylons and at least two feet above the existing pylons.**
- B. If a horse has not reached the fair start pole when the horses are released at the starting point by the starter, the Judges shall cause the inquiry sign to be displayed immediately and request that any money wagered on that horse be refunded.**
- C. The determination of a fair start is signified by the word "go" announced by the starter at the starting point. The starting point is a point that shall be marked on the inside rail at a distance of not less than 200 feet from the first turn.**

Subp. 10. Helmets and safety vest to be worn.

No person shall ride **or drive** a horse on the racing track surface without a properly fastened protective riding helmet and safety vest.

7884.0260 Driving Rules

Subp. 7 Use of stirrups.

After the word "go" is given, barring mishap, both of the driver's feet must be kept in or in contact with the stirrups, posts, or pegs until the race has been completed. **At no time during the race should the driver's foot or feet contact any part of the horse's body.** Notwithstanding this provision, a driver may use his or her feet as necessary to remove a horse's earplugs.

Subp. 11 ~~Pylon rule for horses racing without interference~~ **Violations.**

~~A. Any horse gaining an unfair advantage by going inside, over, or between one or more pylons in order to pass another competitor may be disqualified at the discretion of the stewards, whose determination is final.~~

~~B. Any horse going inside two pylons shall be disqualified and placed behind any lapped on horse in the official order of finish.~~

~~C. Any horse going inside three or more consecutive pylons shall be disqualified and placed last.~~

A. A horse while on stride, or part of the horse's sulky, that leaves the race course by going inside the pylons which constitutes the inside limits of the course, when not forced to do so as a result of the actions of another driver and/or horse, shall be in violation of this rule. In addition, when an act of interference causes a horse, or part of the horse's sulky, to cross inside the pylons and the horse is placed by the Judges, the offending horse shall be placed behind the horse with which it interfered.

B. For purposes of placing the following should apply:

1. If a horse while on stride, or part of the horse's sulky, goes inside two consecutive pylons, the offending horse shall be placed behind all horses that are lapped on to the offending horse at the wire;

2. If a horse while on stride, or any part of the horse's sulky, goes inside three or more consecutive pylons, the offending horse shall be placed last;

3. If in the opinion of the judges a horse while on stride, or part of the horse's sulky goes inside a pylon(s) and that action gave the horse an unfair advantage over other horses in the race or the action helped improve its position in the race, the horse may be placed at the discretion of the judges.

7891.0120 MORTALITY REVIEW COMMITTEE.

Subpart 1. Committee.

The ~~chief steward~~ **HISA Safety Director** or ~~designee~~ shall convene and chair a mortality review committee for the purpose of gathering data surrounding the death of each racehorse occurring during racing or training at a licensed racetrack. The committee shall consist of the following:

- A. the chief steward or a designee;
- B. the **chief** commission veterinarian or a designee;
- C. the on-track commission veterinarian;**
- D. the trainer or assistant trainer of the deceased horse;
- E. the jockey, exercise rider, or driver of the deceased horse;
- F. the attending veterinarian;
- G. the racetrack's director of racing or a designee;
- H. the track superintendent;
- I. the horseperson's representative; and**
- J. any other person the ~~chief steward or designee~~ **HISA Safety Director** determines is necessary to adequately examine the death.

7897.0100 PROHIBITED ACTS

Subp. 25. Unless prescribed for a specific horse with documented hypothyroidism (MRC rule 7890.0110, subp 7b) and approved by the Chief Commission Veterinarian, the possession of thyroid powder, tablets, or other any form of thyroid supplementation on the grounds of the racetrack is prohibited.

Item 13-

Canterbury Park
Trackside Development
Area Improvements
and Class A License
Modification Request



February 1, 2024

Mr. Kyle Gustafson
Executive Director
Minnesota Racing Commission
1100 Canterbury Road
Shakopee, MN 55379

RE: Canterbury Trackside Development Area Improvements & Class A License Modification Request

Canterbury Park appreciates the feedback at the previous Racing Committee meeting discussing our request for a trackside development and Class A modification, and understand the concerns from both Commissioners and Horsepeople about the change to no longer utilizing the 6 ½ furlong distance. Based on this feedback we looked at alternatives and have decided the best option is to create a 7 furlong chute attached to the first turn. We have discussed this internally and with the horsepersons and are in agreement that 7 furlongs is the best intermediate distance option for our racing program.

Please see the attached updated site plan documents, in which we will be changing the proposed property boundary to incorporate a 7 furlong chute. The attached Exhibits are preliminary documents in order to keep this process moving forward. We anticipate having final site plan documents available in time for the Full Commission to take action at the February 15th meeting.

We believe this new chute adequately addresses concerns to the intermediate distance between 6 furlongs and 1 mile. At the Racing Committee meeting we will be prepared to discuss and propose plans to minimize the effects of construction to training and live racing. Canterbury Park will require the contractor to not conduct construction during the live racing program. During training, we will monitor any impact of construction to the safety of horses and riders.

In 2021 Oaklawn Park in Hot Springs, Arkansas constructed and opened a 200-room, 7-story hotel directly adjacent to its clubhouse turn which took place during the course of its active race meet. Construction times were not limited to outside of training and racing hours, and there were no safety concerns from the horsepeople. This Oaklawn Hotel is a much larger project to what Canterbury Park is proposing.

In anticipation of issues that may arise regarding operation of the proposed restaurant during racing hours, Canterbury is also prepared to discuss the measures we will be taking to ensure safety of all horses and riders. We will actively use our Outriders and Security team, who have the ability to monitor the trackside development area during the racing program and who will communicate any safety concerns to Canterbury Park Management.

As landlord of the proposed development of The Boardwalk, the lease gives us the ability to ensure compliance with safety and regulatory requirements of the MRC. We understand The Boardwalk operator will have its own security on site during the live racing program. We will also have the ability to use our own security team to address any concerns arising during racing hours.

Canterbury Park appreciates your consideration of this updated request for a trackside development and addition of a 7 furlong chute. We are hopeful to receive approval at the February 15th meeting of the Full Commission. Construction timing will be important to the management of this project. The most disruptive phase of development, which would potentially have the greatest impact on training hours, will be the initial grading and utility work. We are hopeful to have this phase of construction completed before the main track opens for training at the beginning of May subject to regulatory approvals.

Thank you for your consideration of this updated request for modifications to our Class A License. Canterbury is prepared to answer any questions and discuss any of these issues further.

Sincerely,

Randy Sampson
Chairman and CEO
Canterbury Park Holding Corporation

Attached:

Exhibit A – Proposed and Current Ownership; Class A License

Exhibit B – Preliminary Site Plan

Exhibit C – Oaklawn Racing Casino Resort & Spa



**CANTERBURY
PARK** SHAKOPEE, MINN

Racing Commission

February 8, 2024



Canterbury Development: Trackside Subdivision



Canterbury Development: Trackside Subdivision



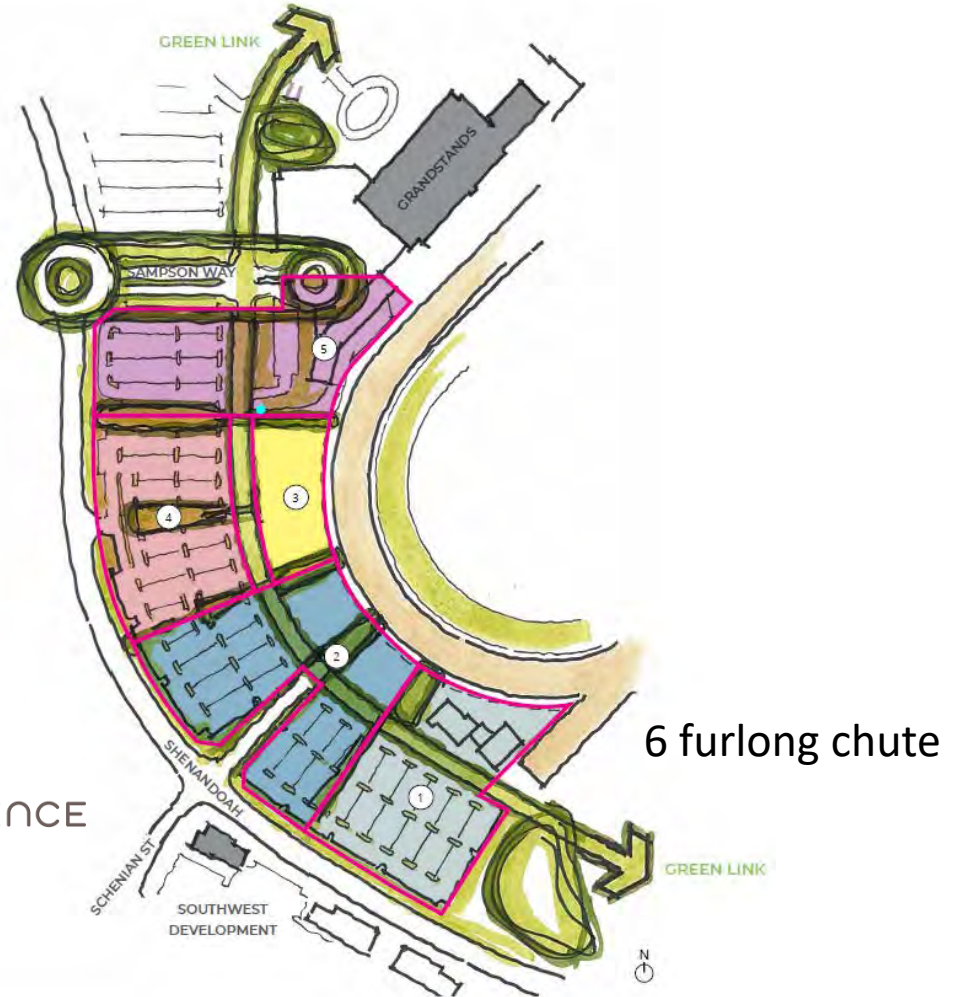
Canterbury Development: Trackside Subdivision

CANTERBURY PARK TRACKSIDE MASTER PLAN

RSP

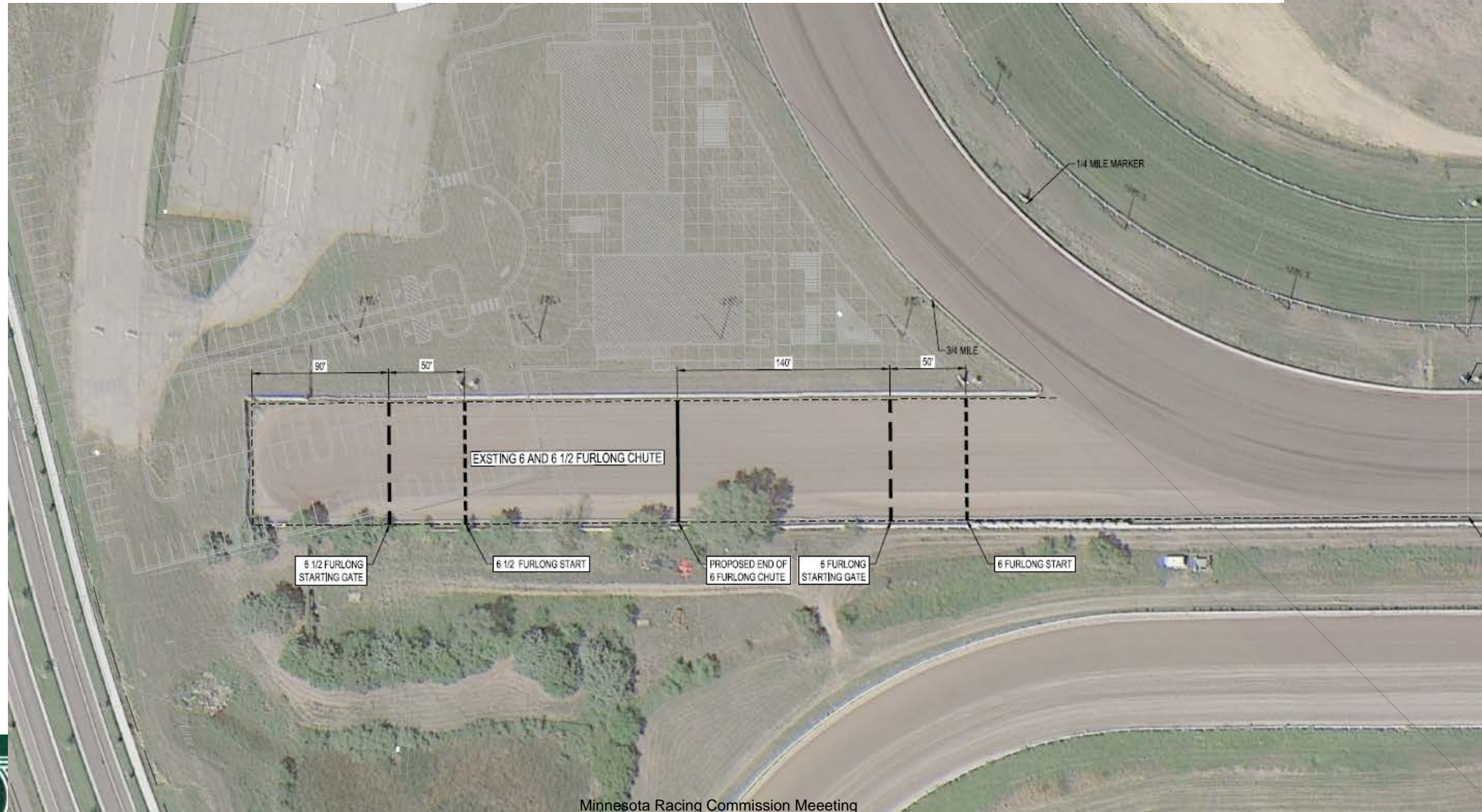
CONFLUENCE

ISG

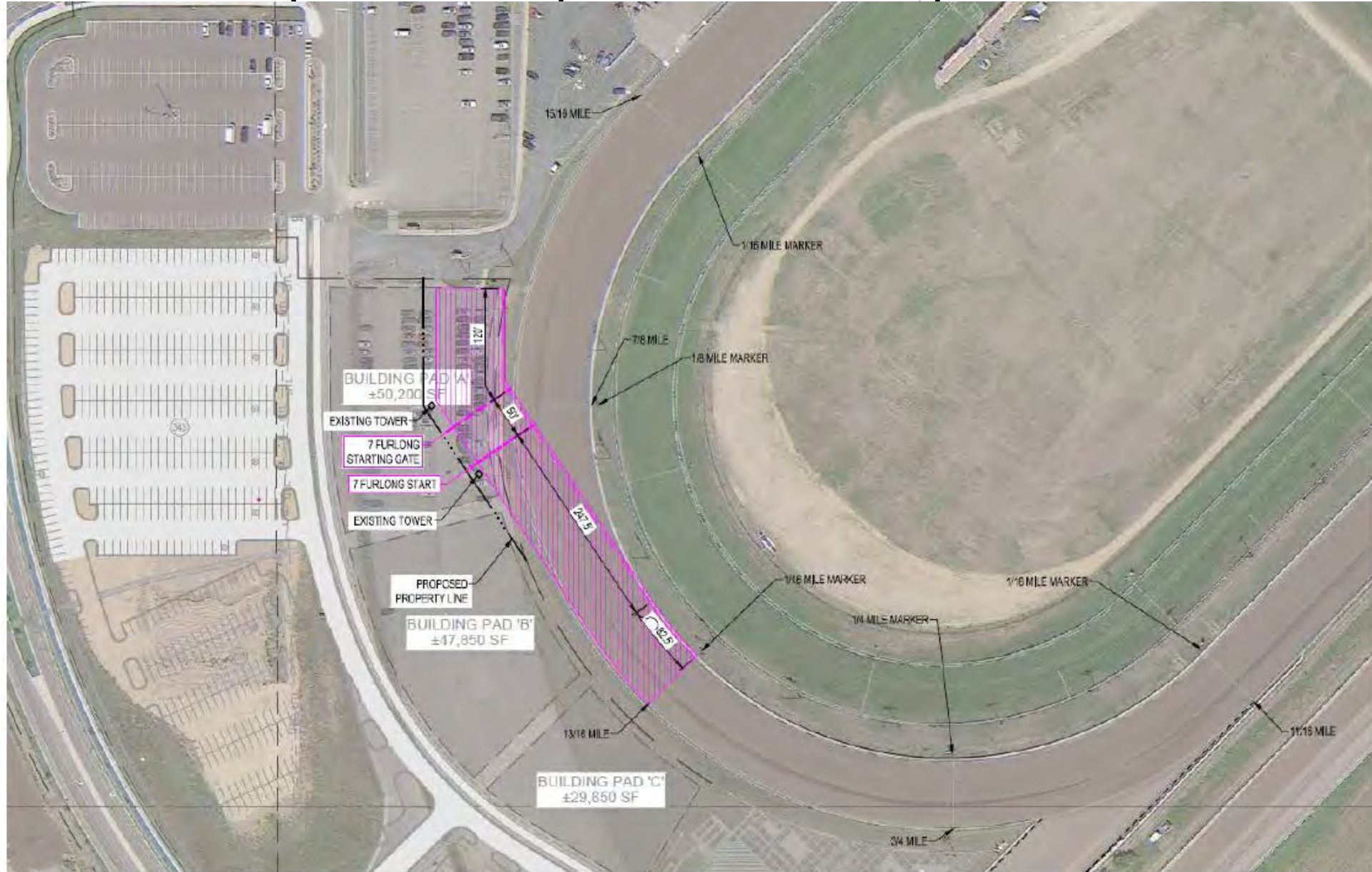


Trackside Development: Existing 6 ½ Furlong Chute

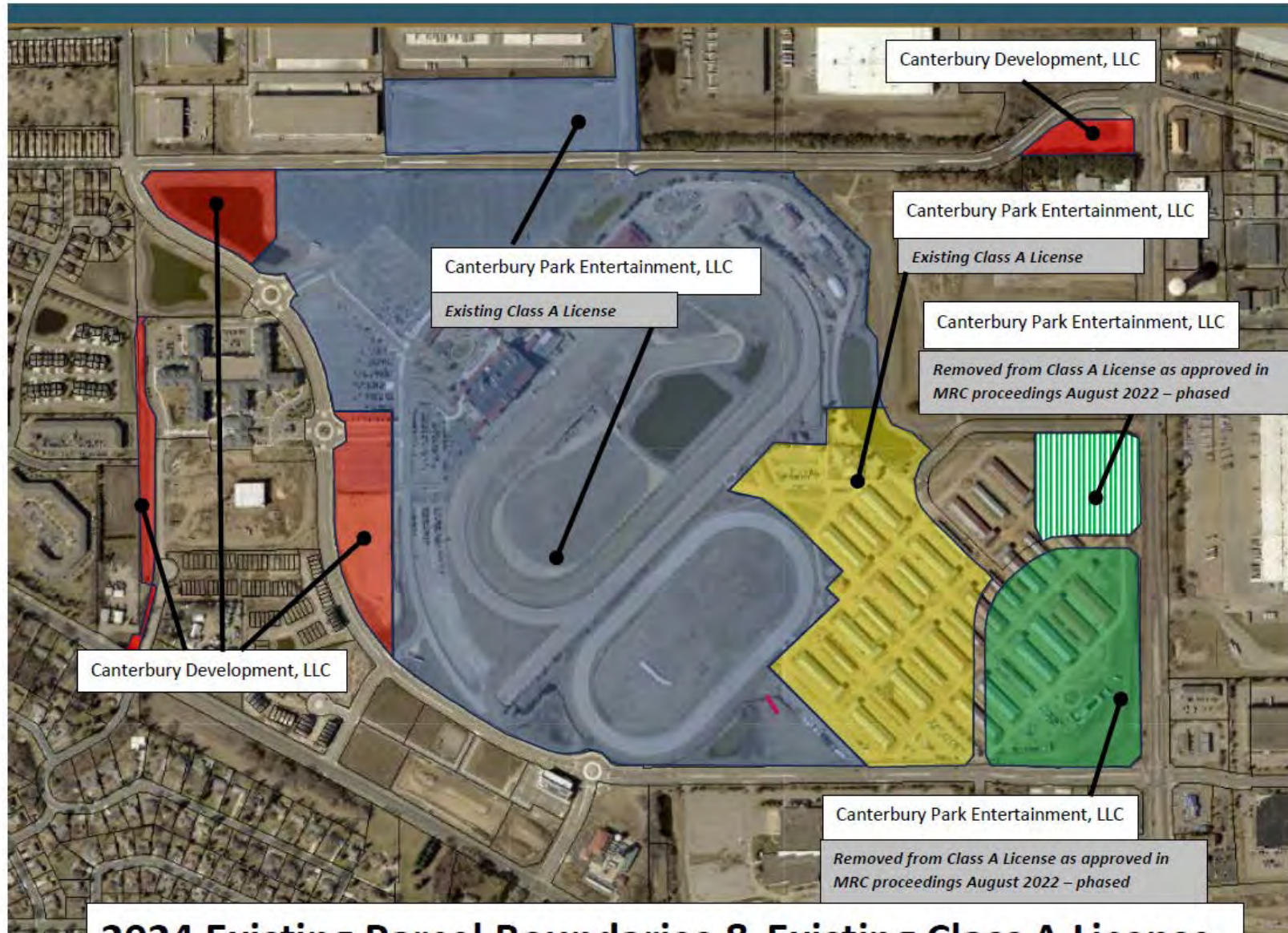
*Proposed 6 Furlong Chute



Trackside Development: Proposed 7 Furlong Chute



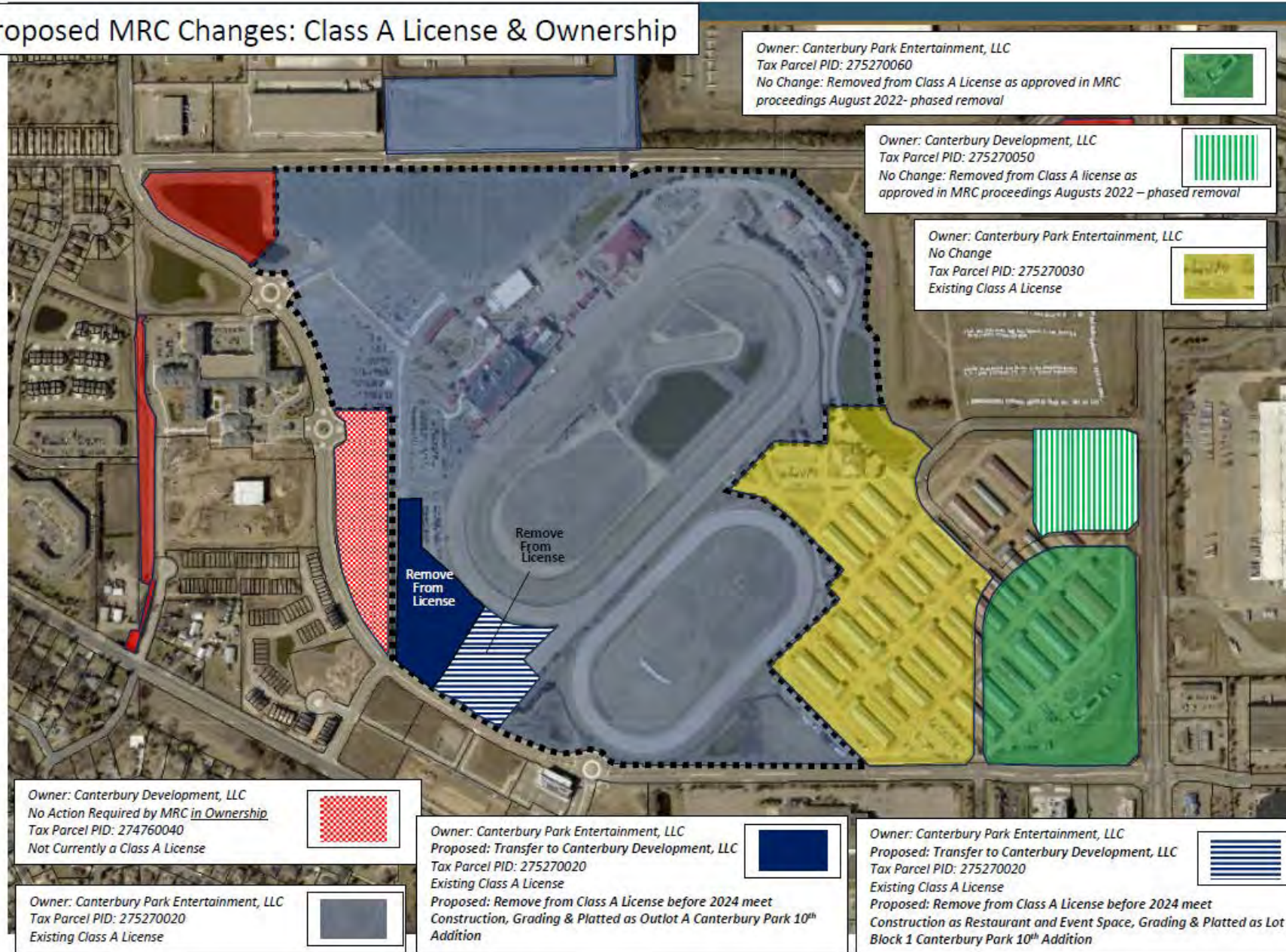
Proposed MRC Changes to License



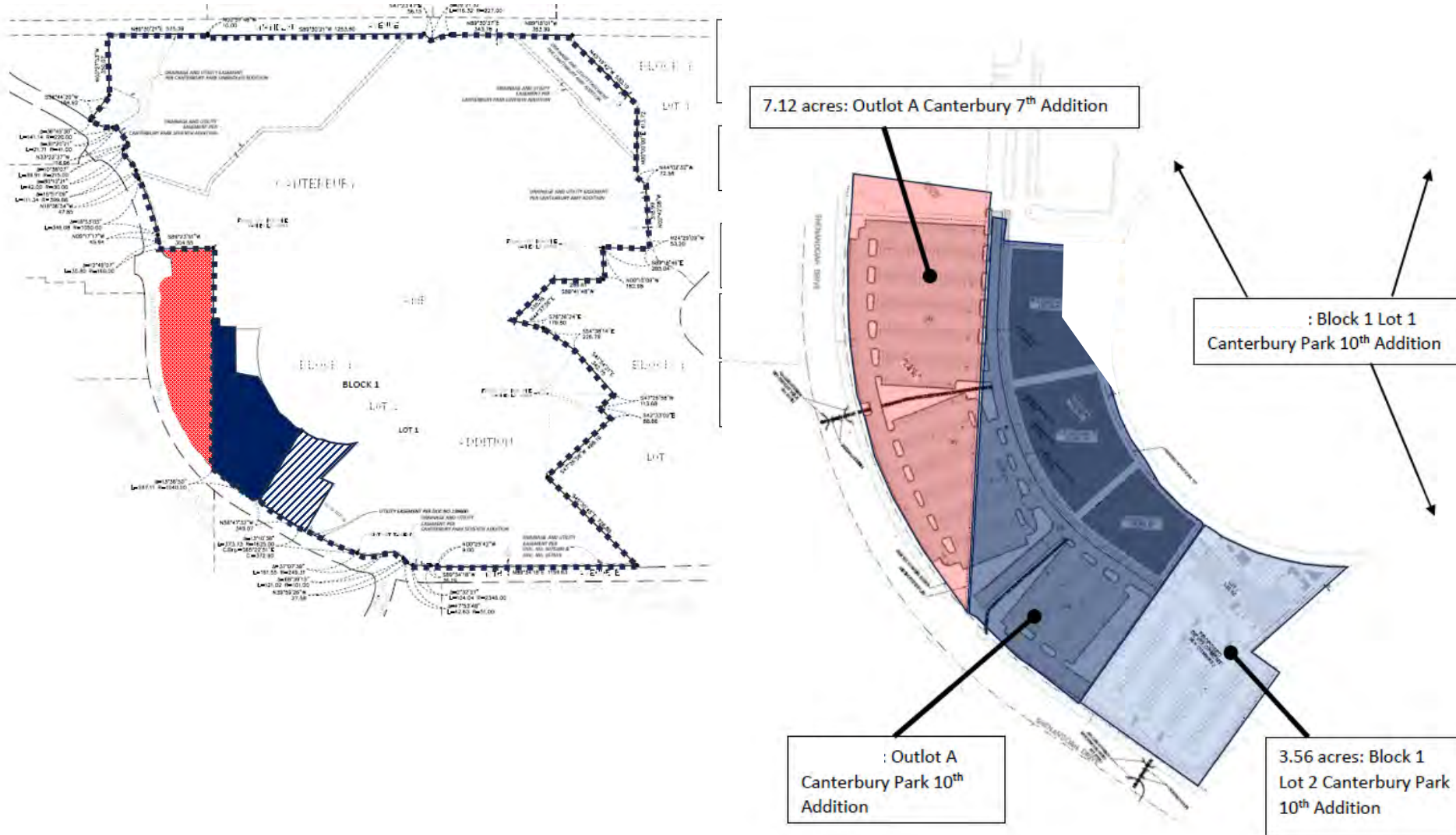
2024 Existing Parcel Boundaries & Existing Class A License



Proposed MRC Changes: Class A License & Ownership



Trackside Development: Plat w/ Improvement Overlay



Oaklawn Racing Casino Resort & Spa



Oaklawn Racing Casino Resort & Spa



Canterbury Master Plan



Trackside Development: The Boardwalk



BOARDWALK

KITCHEN & BAR

SAVOR THE ELEGANCE, EMBRACE THE EXCITEMENT



Trackside Development: The Boardwalk



Music/Events (Stables)

VIEW @ BOARDWALK PATIO



Trackside Development: The Boardwalk



Music/Events (Stables)

VIEW @ BOARDWALK PATIO



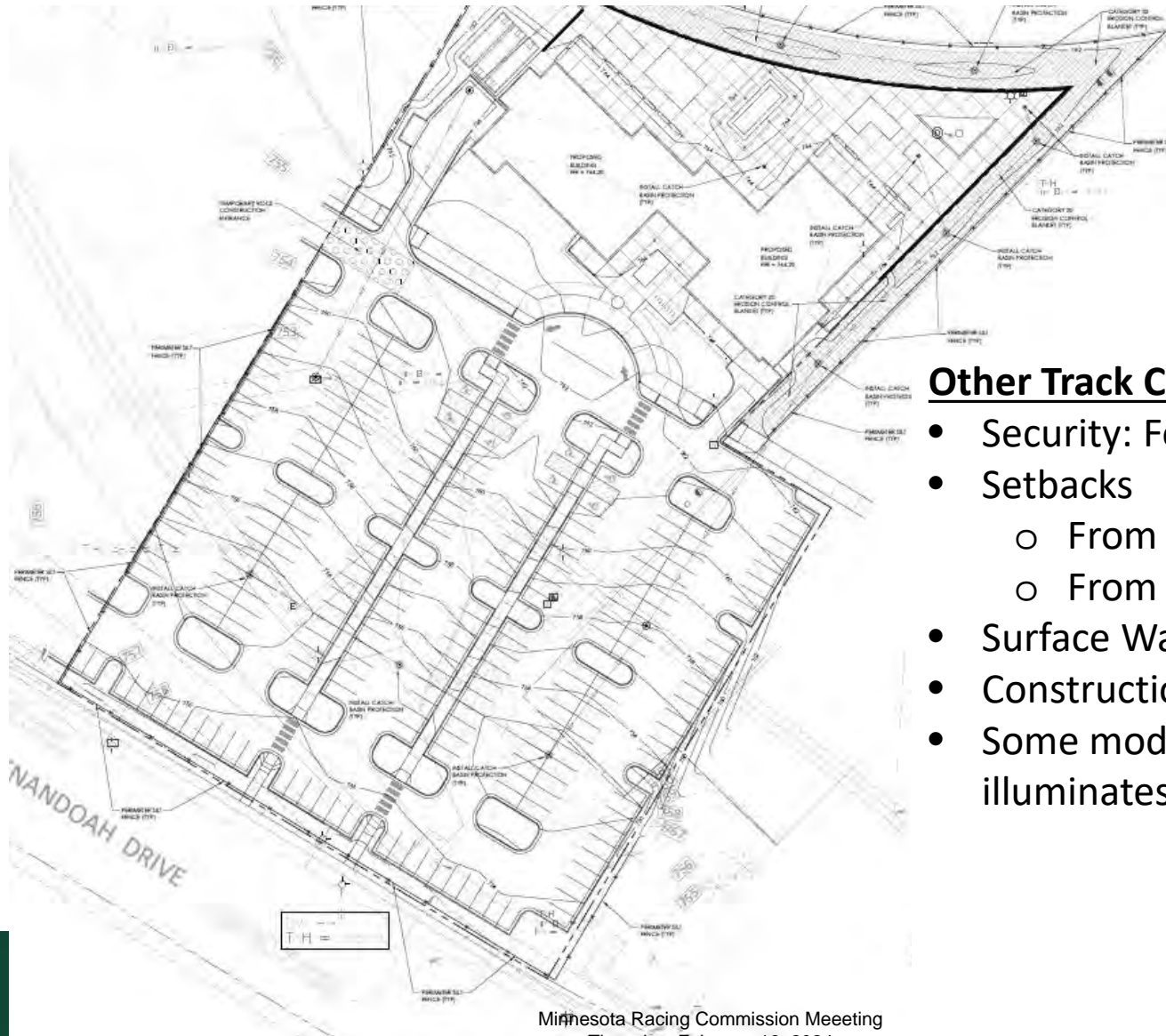
Trackside Development: The Boardwalk



VIEW @ STABLES PATIO



Trackside Development: Subdivision



Other Track Considerations:

- Security: Fencing & Retaining Wall
- Setbacks
 - From Track = 25 ft
 - From Chute = 20 ft
- Surface Water Drainage/Runoff
- Construction Phase mitigation
- Some modification of lighting that illuminates the chute



Item 14-

Status Reports

a. Canterbury Park

CONTAINS NON-PUBLIC DATA

CONTAINS NON-PUBLIC DATA

CONTAINS NON-PUBLIC DATA

CONTAINS NON-PUBLIC DATA

CONTAINS NON-PUBLIC DATA

CONTAINS NON-PUBLIC DATA

CONTAINS NON-PUBLIC DATA

CONTAINS NON-PUBLIC DATA

CONTAINS NON-PUBLIC DATA

CONTAINS NON-PUBLIC DATA

CONTAINS NON-PUBLIC DATA

CONTAINS NON-PUBLIC DATA

CONTAINS NON-PUBLIC DATA

CONTAINS NON-PUBLIC DATA

Pages 62-64 have been
omitted under 2020
Minnesota Statutes Chapter
13D.05

Item 14-
Status Reports
b. Running Aces
Casino, Hotel, and
Racetrack

CONTAINS NON-PUBLIC DATA

CONTAINS NON-PUBLIC DATA

CONTAINS NON-PUBLIC DATA

CONTAINS NON-PUBLIC DATA

CONTAINS NON-PUBLIC DATA

CONTAINS NON-PUBLIC DATA

CONTAINS NON-PUBLIC DATA

CONTAINS NON-PUBLIC DATA

CONTAINS NON-PUBLIC DATA

CONTAINS NON-PUBLIC DATA

CONTAINS NON-PUBLIC DATA

CONTAINS NON-PUBLIC DATA

CONTAINS NON-PUBLIC DATA

CONTAINS NON-PUBLIC DATA

Pages 65-67 have been
omitted under 2020
Minnesota Statutes Chapter
13D.05

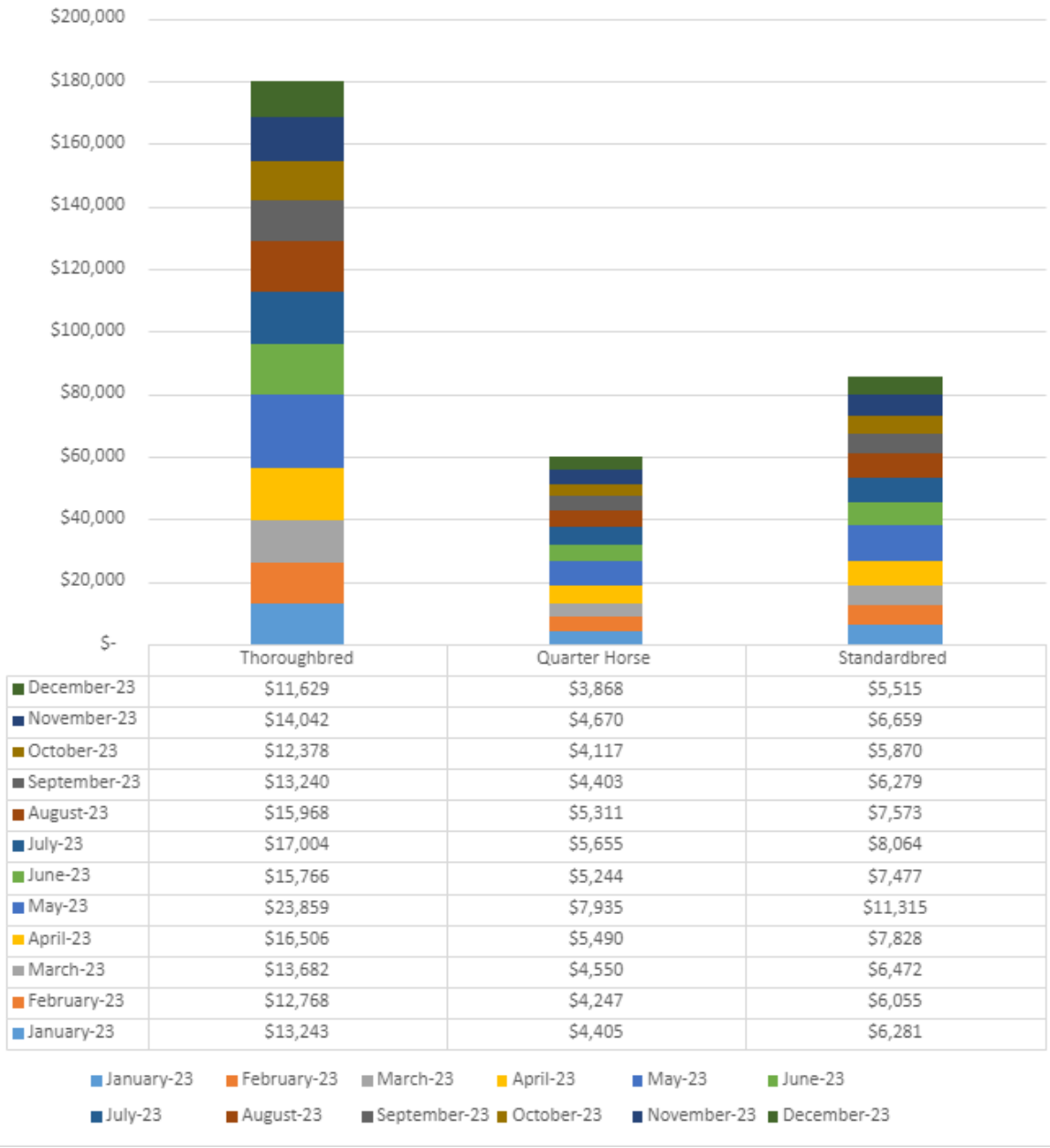
Item 15 – Executive Directors Report

- a. HISA Update
- b. Licensing Report
- c. Contract Approvals
- d. ADW Report
- e. Licensing Report
- f. Other

Item 15 –
d. ADW Report



Incremental Breeders Awards via ADW



Item 15-
e. Licensing Report

Minnesota Racing Commission

January 2024 Licensing Report

Class C Applications Processed at Canterbury Park: **82**

Class C Applications Processed at Running Aces: **40**

Class C Large Racing/Gaming Vendors: **4**

Class C Small Racing/Gaming Vendors: **1**

Class C Non-racing/Gaming Vendors: **11**

Class C Licensing Fees for January 2024: **\$14,090**

Fingerprint Fees for January 2024: **\$1,000.00**
(Fingerprint fees are forwarded to Public Safety for processing reports)

Fines Collected during 2024 Racing Season: **\$0**