



Board of Directors Meeting

April 15, 2015

Discussion slides



Agenda

- Welcome and any new business
- Consumer story – Derrick Watson, Minneapolis
- Public comment
- Administrative items
 - Approve February 18 and March 12 meeting minutes
 - County update – Marti Fischbach, Dakota County; Barb Dahl, Scott County
 - Work Group updates
 - Market Development Work Group
- CEO report
- IT update
- Wrap up and any new business
- Adjourn – next meeting is May 13

Consumer Story

- Derrick Watson, Minneapolis

Public Comment

- Please sign up for public comment at back table

Administrative Items

- Approve February 18 and March 12 meeting minutes
- County update – Marti Fischbach, Dakota County; Barb Dahl, Scott County
- Work Group updates
 - Market Development Work Group

Market Development Work Group

Process Transparency

- Create a general workflow map to be placed conspicuously on the website. Target date = June 1, 2015
 - Details suitable for consumer use
- Engage a consultant to create a detailed workflow process map that will be useful for MNsure staff and our partners. Target date = October 1, 2015
 - MNsure staff is directed to propose at the May Board meeting a proposed budget and timeline to accomplish this initial map as well as a process for a continuous process improvement using tools like value stream mapping on a regular and consistent basis

Comparison and Shopping

- Publish specifications for vendors to work with MNsure
- Comparison only – already in progress
 - Select vendor(s) to provide
- Comparison and Enrollment
 - Link to 3rd party site from MNsure site
 - Rough calculation of APTC on 3rd party site
 - Compare plans on 3rd party site
 - 3rd party vendor enrolls consumers
 - on 3rd party site for non-APTC consumers
 - on MNsure if APTC consumer
 - 3rd party responsible for sending 834 to health plan selected (non APTC)
 - 3rd party provides
 - enrollment demographic information to MNsure for reporting
 - revenue equivalent to premium withhold

Innovative Product Design

- Letter to carriers from MNsure Board outlining desired plan and benefit designs
- Highlight products on the website and on 3rd party vendor platforms that meet certain innovation criteria
- Offering innovative products that meet criteria optional and not a requirement

CEO Report

- Enrollments as of EOD April 13, 2015 and since November 15, 2014:
 - QHP 61,874
 - Medical Assistance 120,129
 - MinnesotaCare 37,769
 - **TOTAL 219,772**

IT Update

- 2015 Focus Areas, Priority Initiatives
- March Release Plan // Project Status
- April Release Plan // Project Status
- 2015 Project Schedule

Focus Areas

Improve Case Management Functionality

Enhance Program Integrity

Enhance Back-Office Functions

Enhance the Customer Experience

Priority Initiatives

- Life event processing
- Streamline case worker task lists
- Navigator/Broker Portal: provide tools to more efficiently assist consumers
- Continued improvements in eligibility processing
- MinnesotaCare Premium Invoice Generation and Payment Processing
- Medical Assistance and MinnesotaCare Renewals – Phase II
- Child Support System Interface
- Medical Assistance and MinnesotaCare Renewals – Phase II
- QHP (Commercial insurance) Open Enrollment Period and Renewal Processing improvements
- Enrollment System of Record. Data Reconciliation and improved user interface
- Reports: automatic creation of standardized system performance reports
- Security enhancement for case worker log on (Multi-Factored Authentication)
- IT Infrastructure Improvement – additional testing/training environments
- MNsure interface improvements to Medicaid system (MMIS)
- Enrollment System of Record Phase II
- Citizen / Worker Portal Integration
- Data transmission of enrollments to carriers (834 EDI files to Carriers)
- 2014 IRS 1095 Files, sent to enrollees and transmitted to IRS
- Public program renewals – January, February, March complete, April in-process
- Notices – Limited Denial / Termination Reasons
- Notices – Infrastructure, Generating and Issuing Notices
- Usability Enhancements/Plan Comparison

Work Completed
Work Currently Underway
Work in Planning Phase
Work Scheduled for Scoping/Planning

★ = Change in Status

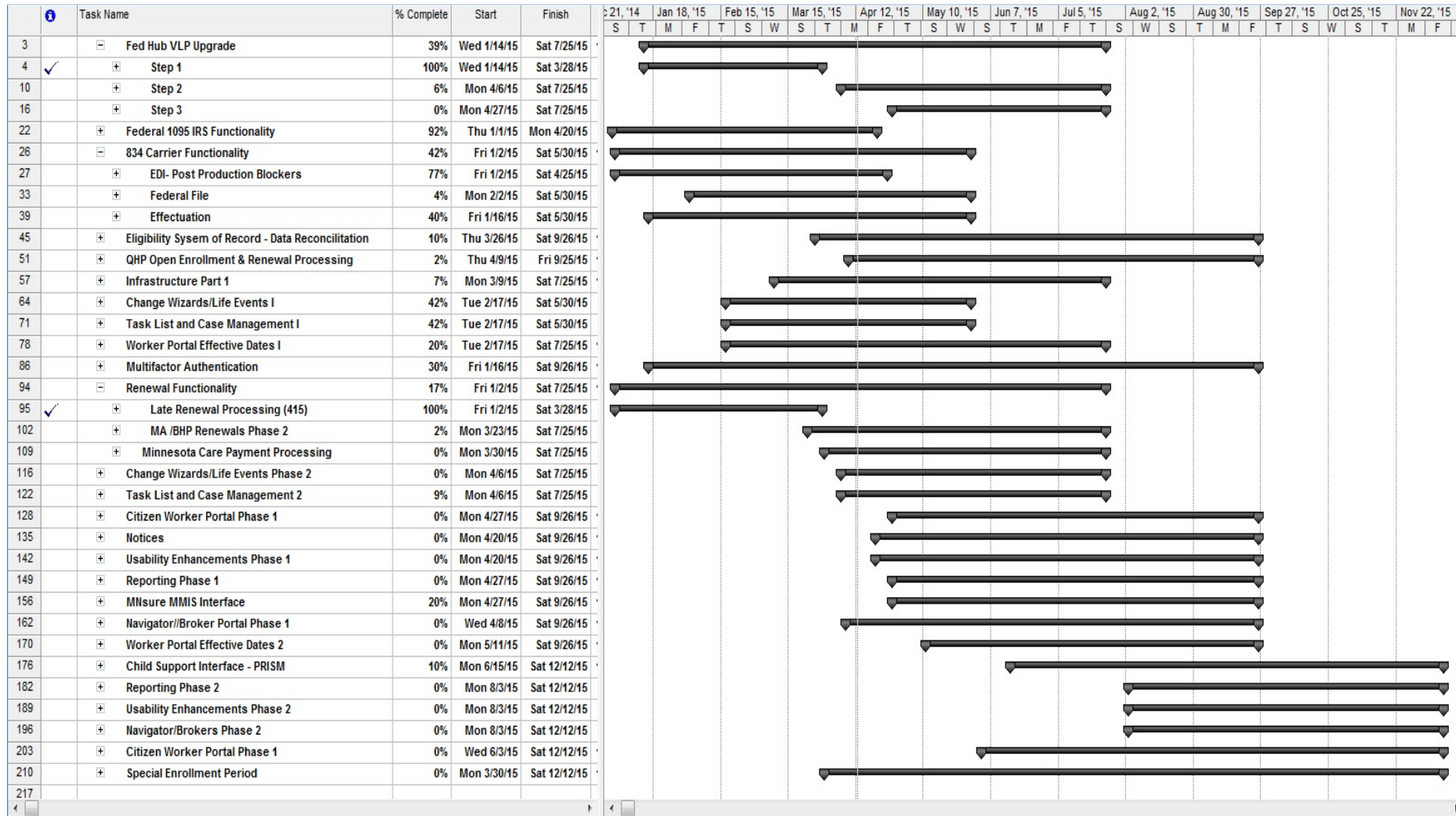
April Release Plan Project Status

Open Enrollment
Nov. 1-Jan 31

March	April Off-Cycle Release	May	July	Sept.	Dec.
Federal Hub Service Upgrade (VLP) ★	Enrollment data to carriers (Phase 1 – EDI transaction) ★ <small>Previously scheduled for May</small>	Life Event Entry Phase 1 (1 of 6 high priority items)	Security Enhancements (Multi-Factor Authentication) –Pilot	QHP Renewals and Open Enrollment	PRISM Interface ★
Public Programs Renewal Functionality (415) ★		Caseworker functionality simplification - Phase 1 (task management)	Life Event Entry Phase 2 (5 remaining high priority items)	Improvements to client eligibility processing (Effective dates) Phase 2	Reporting Functionality Phase 2
41 System Defect Fixes ★		Enrollment data to carriers (Phase 1 – EDI transaction)	Caseworker functionality simplification Phase 2 (task management/UI simplification)	Security Enhancement Multi-Factor Authentication full implementation	Usability Enhancements Phase 2
Eligibility System of Record Fixes 14 ★		Enhanced MA Renewal Functionality	Improvements to client eligibility processing (Effective dates) Phase 1	Citizen/Worker Integration Phase 1	Navigator/Broker Portal Phase 2
Finance Fixes (5) EP ★		Eligibility Software Product Upgrade	MinnesotaCare Payment Processing ★	Notices – Limited Denial/Termination ★	Citizen Worker Portal Phase 2
Cost-Effective determination logic change ★		System Defects	MA and BHP Renewals Processing Functionality Phase 2 ★	Usability Enhancements Phase 1 ★	Special Enrollment
Case generation functionality fix-Product Development Case ★			Enrollment System of Record Phase 2 ★	Reporting Functionality Phase 1 ★	
				MNsure MMIS Interface Functionality ★	
				Navigator/Broker Portal Phase 1 ★	

MNsure 2015 Project Schedule

11/2014-12/2015



Wrap Up and New Business

Adjourn

Next meeting date:

Wednesday, May 13 • 1:00 pm
81 East 7th Street, St. Paul, MN
1st floor atrium