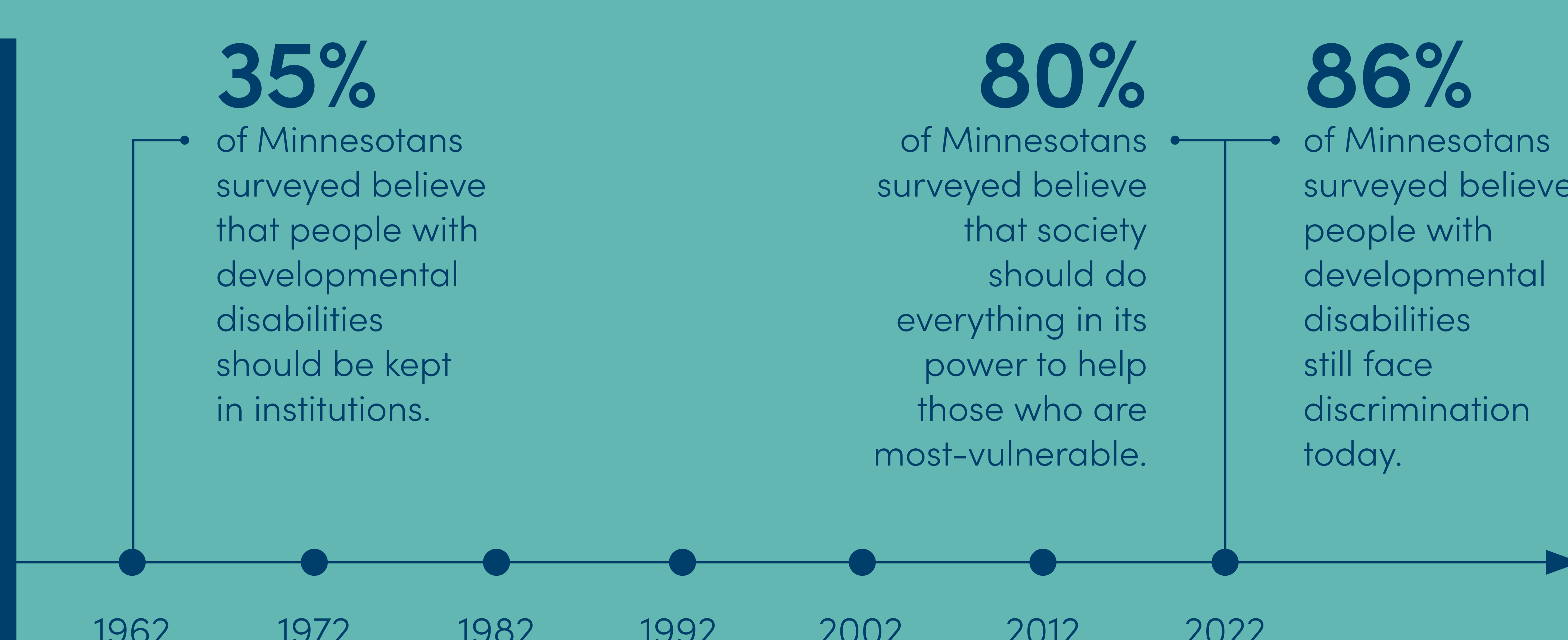


We've come a long way. A recently commissioned survey revealed attitudes towards people with developmental disabilities are changing in Minnesota.

Source: 2022 Minnesota General Population Survey of Attitudes Towards People with Developmental Disabilities, [mn.gov/mnddc/extra/customer-research/MN-Attitudinal-Tracking-FFY2022-Report/index.html](https://mn.gov/mnddc/extra/customer-research/MN-Attitudinal-Tracking-FFY2022-Report/index.html)



# Looking to the future

The journey for people with developmental disabilities has been fraught with misunderstanding, abuse, and exclusion. Abilities have been vastly underestimated. Individuals and their families have shown incredible resiliency, strength, and perseverance in battles large and small across decades. Like everyone, people with developmental disabilities deserve dignity, respect, and inclusion in schools, neighborhoods, employment, and community activities.

Visit [mn.gov/mnddc](https://mn.gov/mnddc) to learn more.

Background: Dorothy Somppi, Peggy LaBlanc, and Linda Markle. Photo by Ann Marsden for *Stories of Leadership*, 2002.

