



Office of Addiction and Recovery - Monthly webinar

<https://mn.gov/mmb/oar/>

Hello and introductions

Meeting logistics:

- All attendees, except presenters, will remain muted
- We will work to address all questions during the time allotted.

Agenda

11:00 a.m.	Hello and introductions
11:05 a.m.	OAR update
11:15 a.m.	Overdose Detection Mapping Application Program (ODMAP) Statewide Application Program Interface (API)
11:35 a.m.	“Getting to know state leaders”, a Q&A
11:55 a.m.	Closing

- Recovery Month
- American Indian SUD Summit
- MOUD in Jails Workgroup Final Report: mn.gov/mmb/oar/
- 1115 Reentry Waiver Capacity Grants
- Cannabis Aware Campaign: becannabisaware.org

Overdose Detection Mapping Application Program (ODMAP) Statewide Application Program Interface (API)

- Troy Greene – Drug Intelligence Officer, North Central HIDTA
- Hayley Hillstrom – Public Health Analyst, North Central HIDTA

September 24, 2025

Overdose Detection Mapping Application Program (ODMAP)

Troy Greene
Drug Intelligence Officer
North Central HIDTA

Hayley Hillstrom
Public Health Analyst
CDC Foundation



Funded by the Office of National Drug Control Policy and
the Centers for Disease Control and Prevention



COLLABORATE • SHARE • INFORM & HELP

Federal Acknowledgement

This presentation is supported in-part by the Centers for Disease Control and Prevention (CDC) of the U.S. Department of Health and Human Services (HHS) as part of a financial assistance award totaling \$17,000,000, with 100 percent funded by CDC/HHS. A portion of this funding supported the project described above. The contents are those of the author(s) and do not necessarily represent the official views of, nor an endorsement by, CDC/HHS, the U.S. Government, or the CDC Foundation.

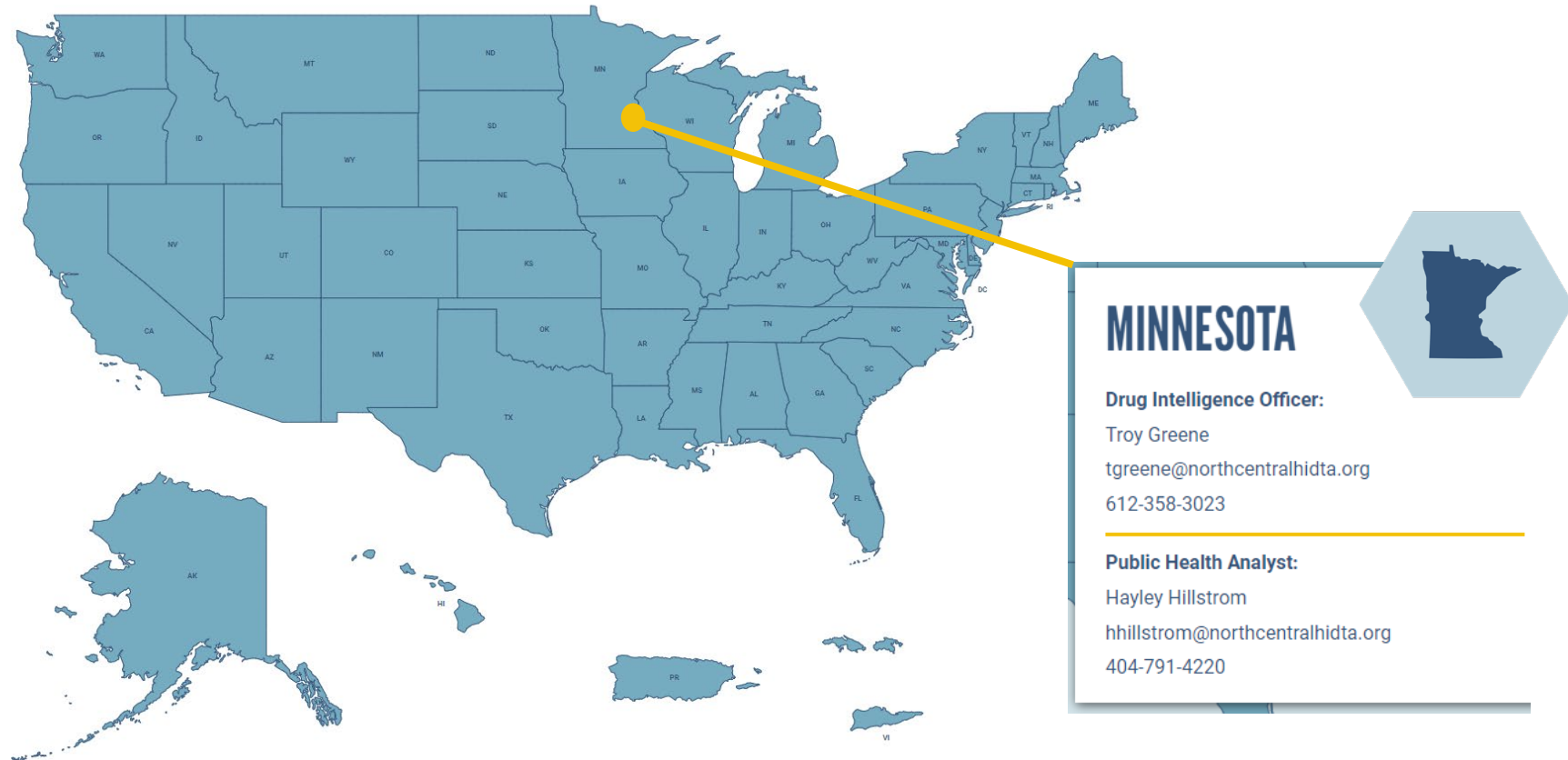


What is the Overdose Response Strategy (ORS)?

The Overdose Response Strategy is an unprecedented and unique collaboration between public health and public safety, created to help local communities reduce drug overdoses and save lives by sharing timely data, pertinent intelligence and innovative strategies.



Minnesota ORS Team



What is ODMAP?

ODMAP is a **free**, web-based tool that provides near **real-time** suspected overdose data to **support public safety and public health** efforts to mobilize an **immediate response** to overdose events.

- ODMAP provides communities with situational awareness.
- No personally identifiable information



ODMAP
OVERDOSE DETECTION
MAPPING APPLICATION PROGRAM



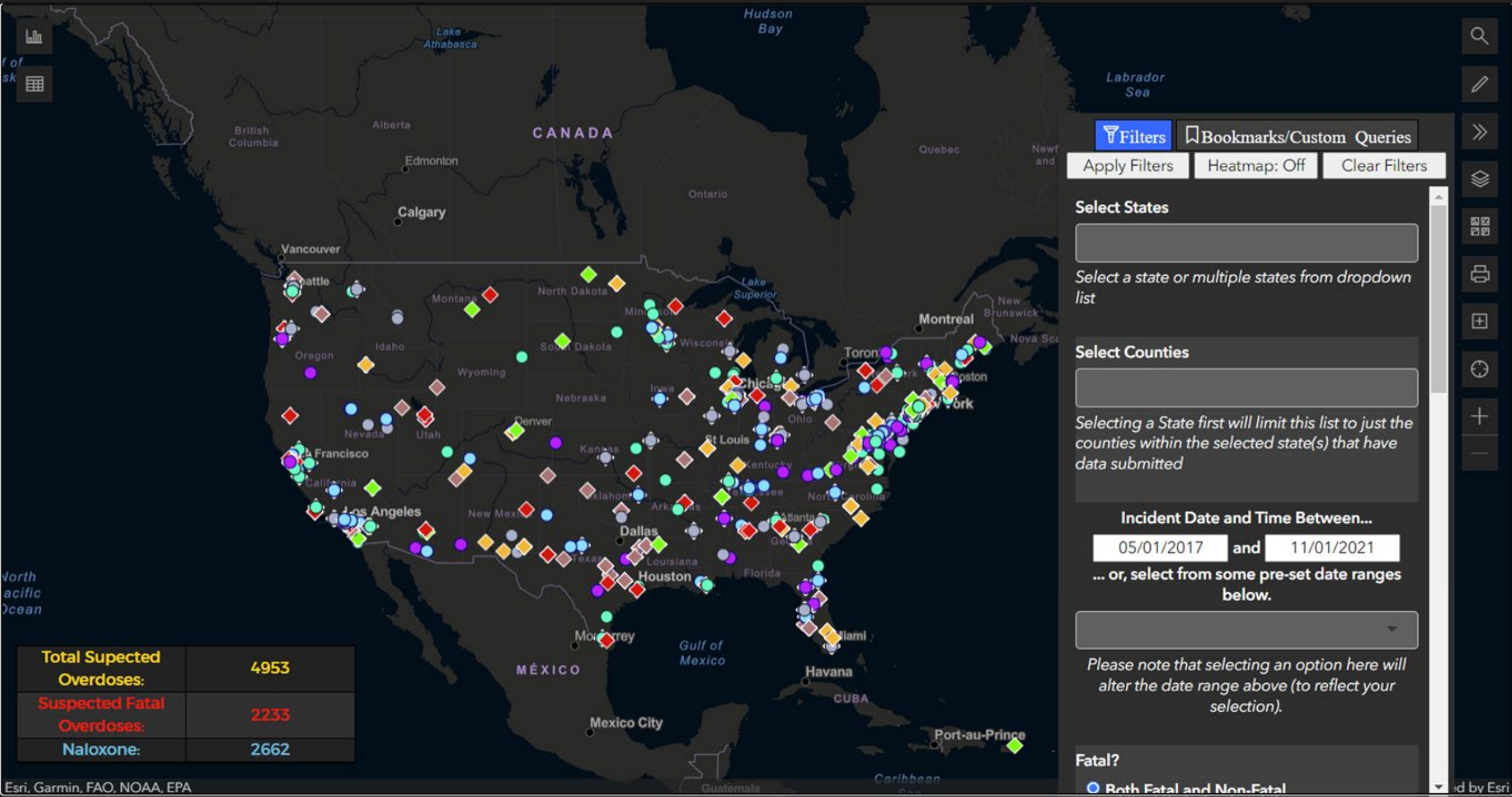
Real-time Public Health and Safety Data Collaboration

- Public health data/solutions alone **cannot** address the current epidemic
- Public safety data/solutions alone **cannot** address the current epidemic
- Retroactive data alone **cannot** drive life-saving decisions
- Collaboration **and** real-time data helps save lives and drive short- and long-term decisions



ODMAP
OVERDOSE DETECTION
MAPPING APPLICATION PROGRAM





ODMAP Agency Eligibility

- Federal, state, local and Tribal
 - Law enforcement/criminal justice personnel (including medical examiners/coroners)
 - Public health personnel
- Licensed first responders (Fire/EMS)
- Hospitals with emergency departments
- All agencies **must sign** a participation agreement prior to gaining access, it outlines the ODMAP policies and procedures



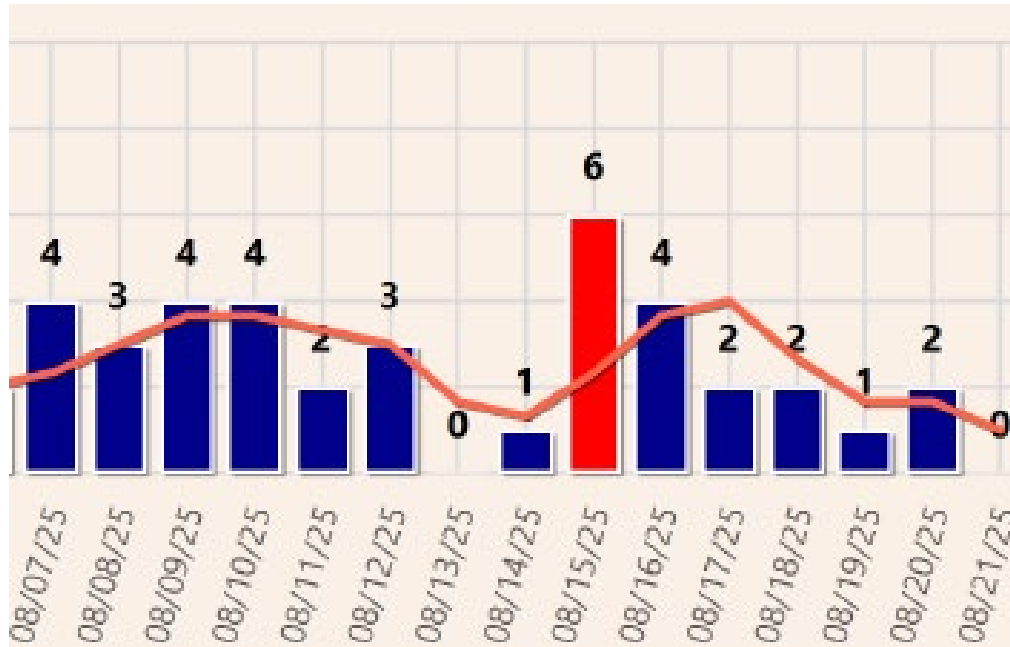
ODMAP and The Health Insurance Portability and Accountability Act (HIPAA)

- ODMAP is not considered a system of record– it collects location, date/time, fatality status, and naloxone administration
- The information captured by ODMAP is not considered protected health information (PHI)– the location is translated into a geo-located point where an overdose occurred without any other information about a person
- W/B HIDTA and ODMAP do not retain any address information within the platform or on the server (they are deleted)
- ODMAP Zoom function is restricted to a zoom Level ID: 15 (scale of 1:18055.95)



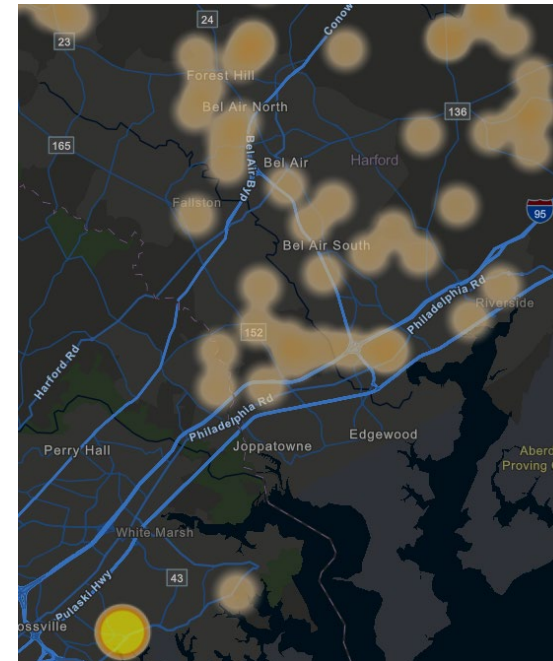
Why is this important?

- Identify Spikes



Washington / Baltimore HIDTA

- Situational Awareness



Washington / Baltimore HIDTA Training Data

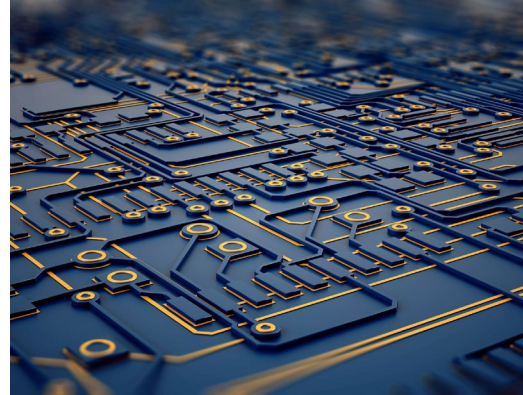
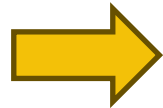


What is an API?

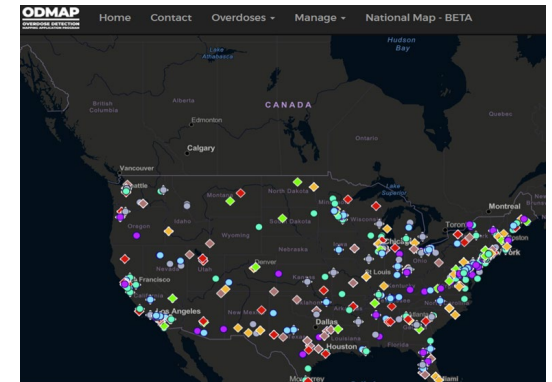
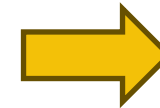
- Application Program Interface (API)
- Software connection that integrates with our state's EMS records management system and pushes selected information to ODMAP.



Power Point stock photo



Power Point stock photo



Washington / Baltimore HIDTA



How did the API become MN Law?



- Many agencies used ODMAP across the state, however, manual entry limited success.
- The Office of Addiction and Recovery under the leadership of Director Jeremy Drucker recognized an opportunity.
 - Quest to improve data collection for the purpose of improving naloxone saturation
 - Supported by Executive Director Dylan Ferguson of the Office of Emergency Medical Services



Moving from data to action



Examples from Public Health and Safety



Examples from Public Health and Safety



Spike response



Planning and resource allocation



Post overdose outreach






Spike Response

- ODMAP Spike Alerts are designed to alert ODMAP users when an overdose spike occurs, in near real-time
- It is intended to give the public safety and public health community real-time alerts to mobilize a response strategy

Hennepin, Minnesota Spike Alert

 odmap@wb.hidta.org
To: Rick Palaia (MN ISC); Dennis.Jahnke@hennepin.us; Hayley Hillstrom +6 others Thu 12/8/2022 10:06 AM

Hennepin, Minnesota is in a spike. There have been 10 total overdose incidents in the last 24 hours.

Currently your spike alert threshold is 10 overdose incidents in 24 hours.

This spike alert was requested by the Hennepin County Sheriff's Office .





Planning and Resource Allocation

- Identify which locations within the county may need additional resources
- Targeted overdose education and naloxone distribution
- Medications for Opioid Use Disorders (MOUD)
 - Inform where to locate treatment providers or deploy mobile MOUD units
- Locate hot spots and provide prevention resources
 - ODMAP can help identify locations that are hot spots in your community
 - Collaborate with them to train staff in recognizing an overdose and using naloxone
 - Provide prevention resources to business patrons





Post Overdose Outreach

- Post overdose outreach programs engage overdose survivors and/or their family and friends in the days following an overdose
 - Connect them with services to reduce risk of a future overdose
 - Offer referral and linkage to local substance use disorder treatment
 - Provide resources (e.g. naloxone, connection to services related to housing, food, shelter, employment)
- Outreach is often conducted by public health/social work/clergy/outreach workers
- ODMAP is used to identify that an overdose occurred
 - Law enforcement provides incident details with the outreach team for follow-up



Thank you!



Troy Greene

*Drug Intelligence Officer
North Central HIDTA*

tgreene@northcentralhidta.org



Hayley Hillstrom

*Public Health Analyst
CDC Foundation*

hhillstrom@northcentralhidta.org

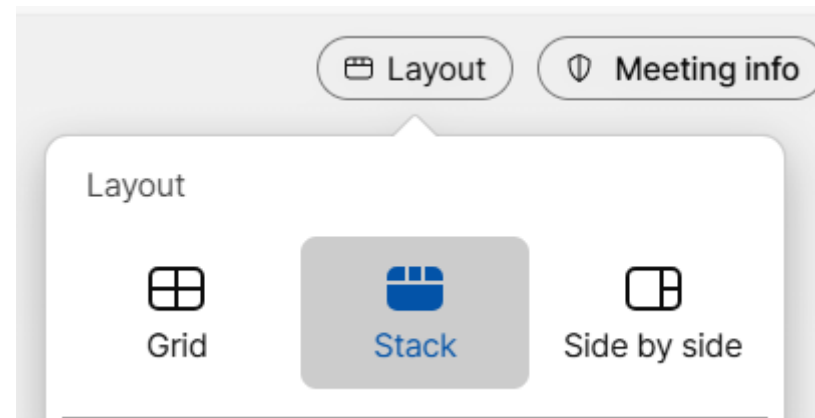


Questions about ODMAP

- Attendees are muted.
- Please open the Chat panel to submit your question.
 - Please post chat questions to everyone to allow for all attendees to see conversation.

“Getting to know state leaders”, a Q&A

- Dr. Robsan (Halkeno) Tura– MDH Health Improvement Bureau Assistant Commissioner
- For this segment, you are encouraged to change your “Layout” to “Stack”, in the upper, right tool bar. Doing so will make it easier to see the individuals speaking.



Questions for Dr. Robsan (Halkeno) Tura

- Attendees are muted.
- Please open the Chat panel to submit your question.
 - Please post chat questions to everyone to allow for all attendees to see conversation.

OAR webinar series information

- The next webinar will be on October 29 at 11 a.m.
- Visit <https://mn.gov/mmb/oar/monthly-update/> for:
 - A list of all webinar dates
 - A link to register for the next scheduled session
 - Past presentations

Thank You!

Contact Information

officeofaddictionandrecovery.mmb@state.mn.us