

RESIDENCE CLUB AT GIANTS RIDGE

Part of Gov't Lots 2 & 3, Sec.19, T59N, R15W, St. Louis County, Minnesota

PLAT DEDICATION  
RESIDENCE CLUB AT GIANTS RIDGE  
ST. LOUIS COUNTY, MINNESOTA

KNOW ALL MEN BY THESE PRESENTS. That the State of Minnesota, a Sovereign entity, owner and proprietor of the following described property situated in St. Louis County, State of Minnesota, to wit:

That part of Government Lots 2 and 3 of Section 19, Township 59 North, Range 15 West of the Fourth Principal Meridian, St. Louis County, Minnesota, bounded and described as follows:

Commencing at the Southwest corner of Government Lot 2; thence North 89 degrees 25 minutes 23 seconds East along the south line of Government Lot 2, a distance of 716.05 feet to its intersection with a point on the east right-of-way line of C.S.A.H. No. 138; thence South 04 degrees 57 minutes 08 seconds East along the said east right-of-way line of C.S.A.H. No. 138, a distance of 134.29 feet to the point of beginning (said point also being the most southerly corner of GIANTS RIDGE WOODLANDS, St Louis County, Minnesota, according to the plat thereof) ; thence North 72 degrees 54 minutes 48 seconds East along the southerly line of the said plat of GIANTS RIDGE WOODLANDS, a distance of 96.14 feet; thence continuing northerly along the easterly line of the said plat of GIANTS RIDGE WOODLANDS on a non-tangential curve, concave to the southwest having a radius of 175.00 feet, a central angle of 30 degrees 24 minutes 59 seconds, and a chord that bears North 32 degrees 17 minutes 41 seconds West; a distance of 92.90 feet to a point of reverse curvature; thence continuing northerly along the easterly line of the said plat of GIANTS RIDGE WOODLANDS along said reverse curve which is concave to the northeast having a radius of 125.00 feet, a central angle of 16 degrees 45 minutes 05 seconds, and a chord that bears North 39 degrees 07 minutes 32 seconds West, a distance of 36.55 feet to a point on the south line of Government Lot 2 (and also being the Southwest corner of Lot 1, Block 1, said plat of GIANTS RIDGE WOODLANDS); thence North 80 degrees 02 minutes 14 seconds East along the south line of Lot 1, Block 1, said plat of GIANTS RIDGE WOODLANDS, a distance of 243.93 feet; thence South 00 degrees 15 minutes 47 seconds West, a distance of 279.40 feet; thence South 56 degrees 36 minutes 40 seconds East, a distance of 51.84 feet; thence South 87 degrees 20 minutes 27 seconds East, a distance of 191.33 feet; thence North 38 degrees 45 minutes 04 seconds East, a distance of 100.50 feet; thence North 01 degrees 49 minutes 41 seconds East, a distance of 356.83 feet; thence North 02 degrees 28 minutes 00 seconds West, a distance of 725.60 feet; thence North 48 degrees 47 minutes 59 seconds East, a distance of 409.96 feet; thence North 66 degrees 36 minutes 46 seconds East, a distance of about 117 feet more or less to the shoreline of Sabin Lake; thence southerly along the shoreline of Sabin Lake to its intersection with the south line of Government Lot 3, said Section 19; thence South 88 degrees 56 minutes 09 seconds West along said south line of Government Lot 3, a distance of 1125 feet more or less to a point on the centerline of C.S.A.H. No. 138 per document number 491688; thence in a northerly direction along said centerline of C.S.A.H. No. 138, said centerline being a non-tangential curve concave to the east, having a radius of 1145.92 feet, a central angle of 20 degrees 07 minutes 36 seconds, and a chord that bears North 00 degrees 14 minutes 27 seconds East, a distance of 402.54 feet; thence North 09 degrees 49 minutes 21 seconds East, continuing along said centerline, a distance of 315.72 feet; thence northerly, continuing along said centerline of C.S.A.H. No.138, along a tangential curve concave to the west, having a radius of 1432.39 feet and a central angle of 14 degrees 46 minutes 28 seconds, and a chord that bears North 02 degrees 26 minutes 07 seconds East, a distance of 369.36 feet; thence continuing along said centerline of C.S.A.H. No. 138, North 04 degrees 57 minutes 07 seconds West a distance of 102.22; thence North 85 degrees 02 minutes 53 seconds East a distance of 80.00 feet to the point of beginning.

Containing 39.52 acres of land, more or less, Except minerals

Acting by and through its office of the Commissioner of Iron Range Resources and Rehabilitation has caused the same to be surveyed and platted as RESIDENCE CLUB AT GIANTS RIDGE and does hereby donate and dedicate to the public use forever the thoroughfares and drainage and utility easements as shown on this instrument.

In witness whereof said State of Minnesota, a sovereign entity, acting by and through its office of the commissioner of Iron Range Resources and Rehabilitation, has caused these presents to be signed by its proper officer this 18<sup>th</sup> day of November, 2009.

Brian Hiti  
Deputy Commissioner of IRR&R

STATE OF MINNESOTA)  
)SS  
COUNTY OF ST. LOUIS)

The foregoing instrument was acknowledged before me this 18<sup>th</sup> day of November, 2009 by Brian Hiti, Deputy Commissioner of Iron Range Resources and Rehabilitation for the State of Minnesota.

Lawrence Stahlhut  
Notary Public, St. Louis Co.  
My Commission Expires 1-31-2010

I hereby certify that I have surveyed and platted the property described on this plat as RESIDENCE CLUB AT GIANTS RIDGE, that this is a correct representation of the survey, that all distances are correctly shown on the plat in feet and hundredths of a foot, that all monuments depicted on the plat have been or will be correctly set within one year as indicated on the plat; that the outside boundary lines are correctly designated on the plat, and that there are no wet lands as defined in MS 505.01 Subd. 3, or public highways to be designated other than as shown.

Craig P. La Tulip  
Craig P. La Tulip, Land Surveyor  
Minnesota License No. 25299

STATE OF MINNESOTA)  
)SS  
COUNTY OF ST. LOUIS)

The foregoing instrument was acknowledged before me this 12 day of November, 2009 by Craig P. La Tulip, Minnesota License No. 25299.

Sharon A. Holt  
Notary Public, St. Louis Co.  
My Commission Expires 1-31-2010

CITY PLANNING COMMISSION

Approved by the Planning Commission of the City of Biwabik, Minnesota, at a meeting thereof, on the 6<sup>th</sup> day of October, 2009.

Jim Westburn  
Mayor

Jeff Jacobson  
City Clerk

COUNTY SURVEYOR

I hereby certify that this plat has been checked and approved this 17<sup>th</sup> day of November, 2009.

Thomas J. O'Malley  
Thomas O'Malley,  
St. Louis County Surveyor

COUNTY AUDITOR

TAX STATEMENT

No delinquent taxes due and transfer entered this 18<sup>th</sup> day of November, 2009.

K. Shelenb  
St. Louis County Auditor

COUNTY REGISTRAR OF TITLES

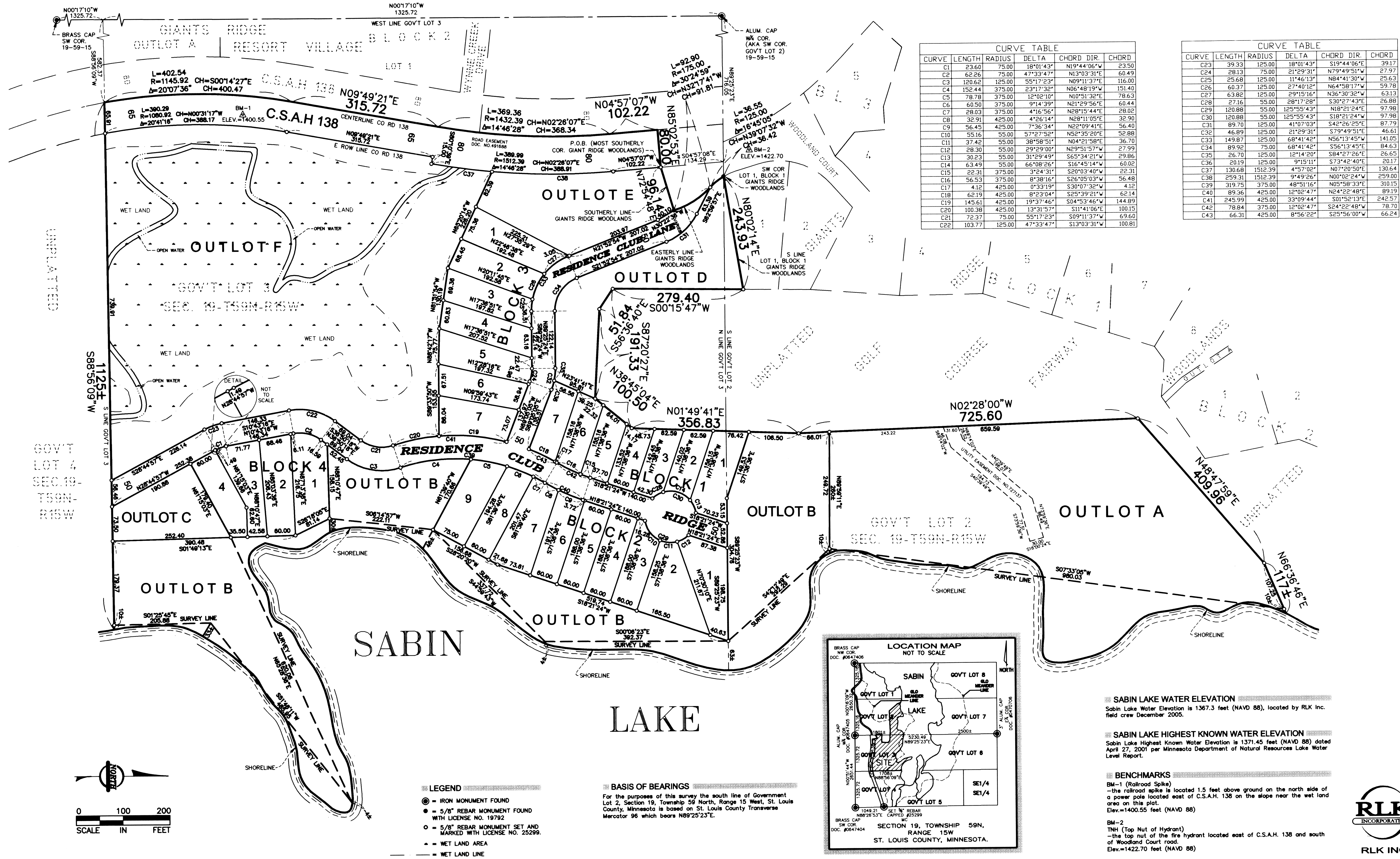
I hereby certify that the within plat of RESIDENCE CLUB AT GIANTS RIDGE was filed for record in the office of the Registrar of Titles on this 19<sup>th</sup> day of November, 2009, as Document Number 877533 on Certificate of Title No. 303482.

Mark A. Monacelli  
Registrar of Titles  
St. Louis County, Minnesota  
By: Brian Hiti, Deputy



# RESIDENCE CLUB AT GIANTS RIDGE

Part of Gov't Lots 2 & 3, Sec.19, T59N, R15W, St. Louis County, Minnesota





# RESIDENCE CLUB AT GIANTS RIDGE

Part of Gov't Lots 2 & 3, Sec.19, T59N, R15W, St. Louis County, Minnesota

