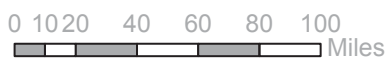
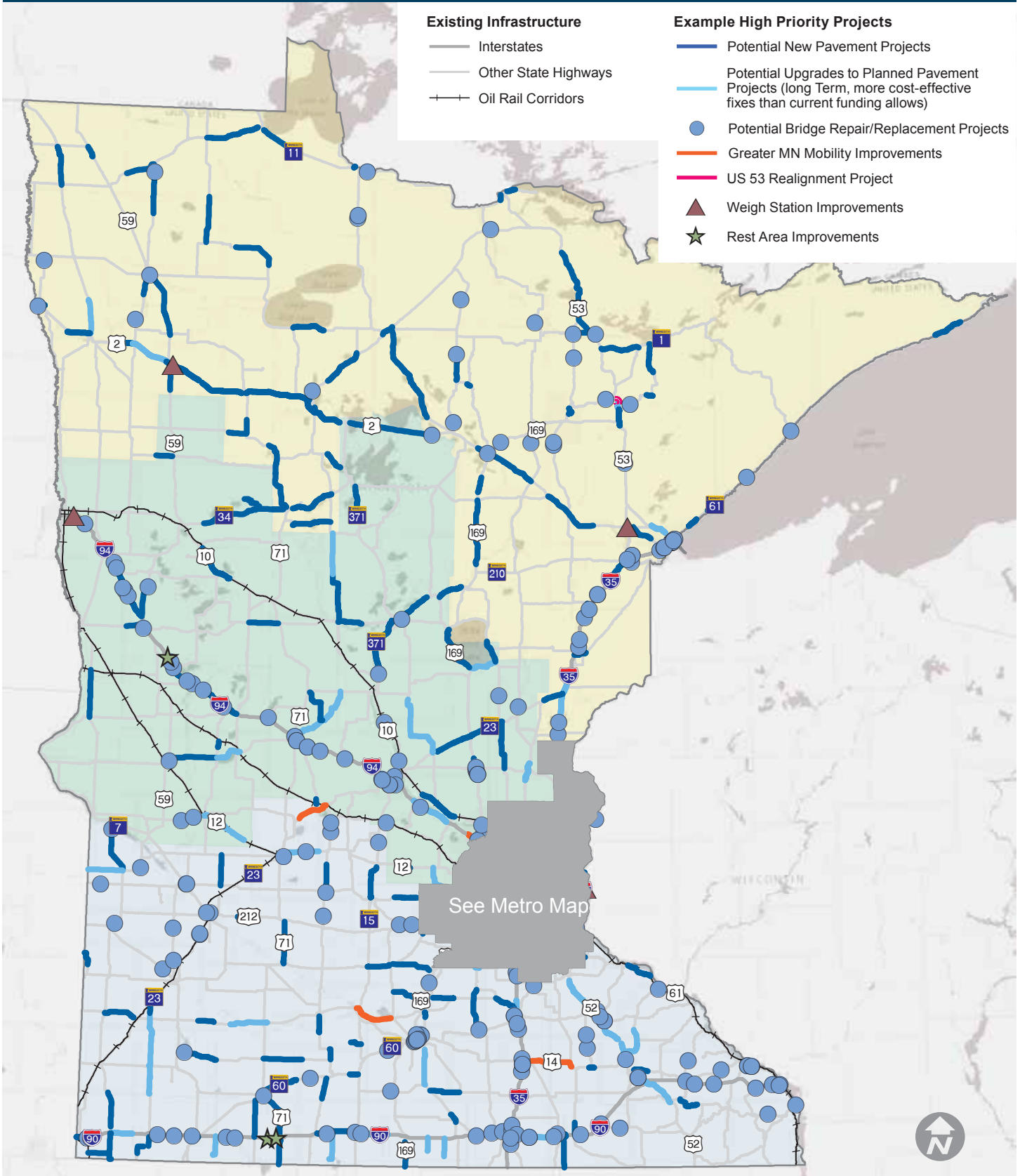
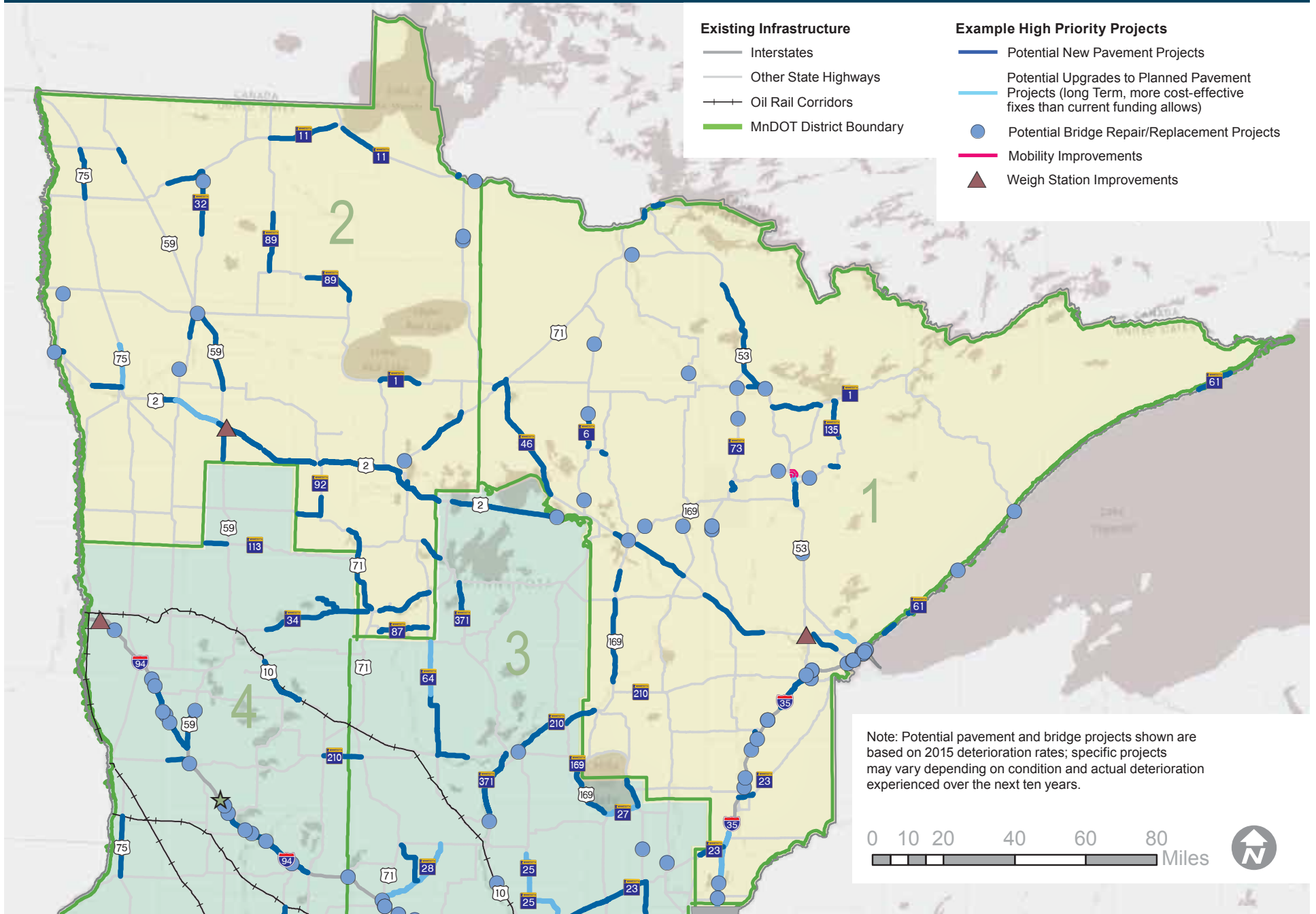


Statewide Projects At-A-Glance



Note: Potential pavement and bridge projects shown are based on 2015 deterioration rates; specific projects may vary depending on condition and actual deterioration experienced over the next ten years.

Northern Minnesota: MNDOT Districts 1 & 2



Central Minnesota: MNDOT Districts 3 & 4



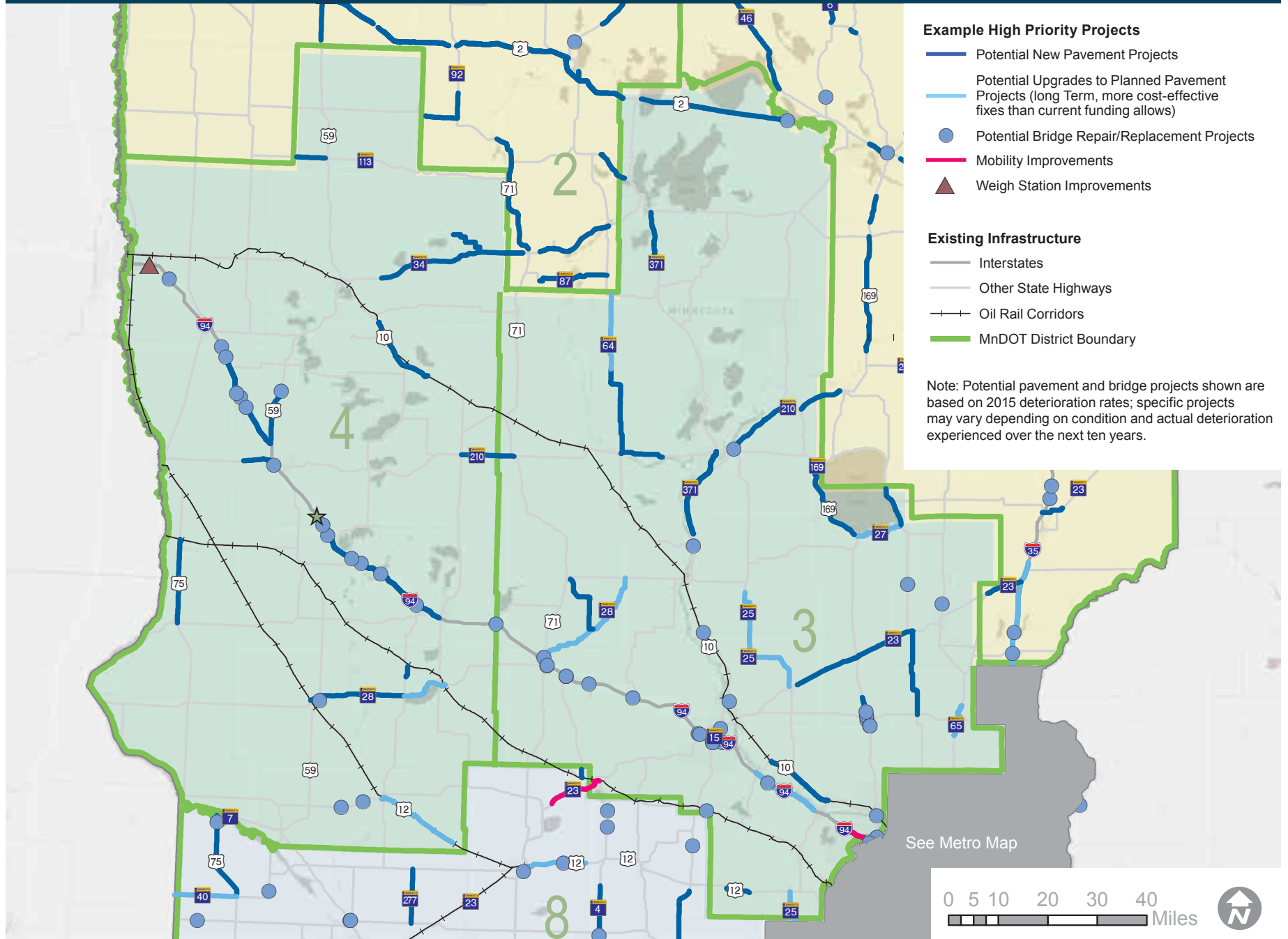
Example High Priority Projects

- Potential New Pavement Projects
- Potential Upgrades to Planned Pavement Projects (long Term, more cost-effective fixes than current funding allows)
- Potential Bridge Repair/Replacement Projects
- Mobility Improvements
- ▲ Weigh Station Improvements

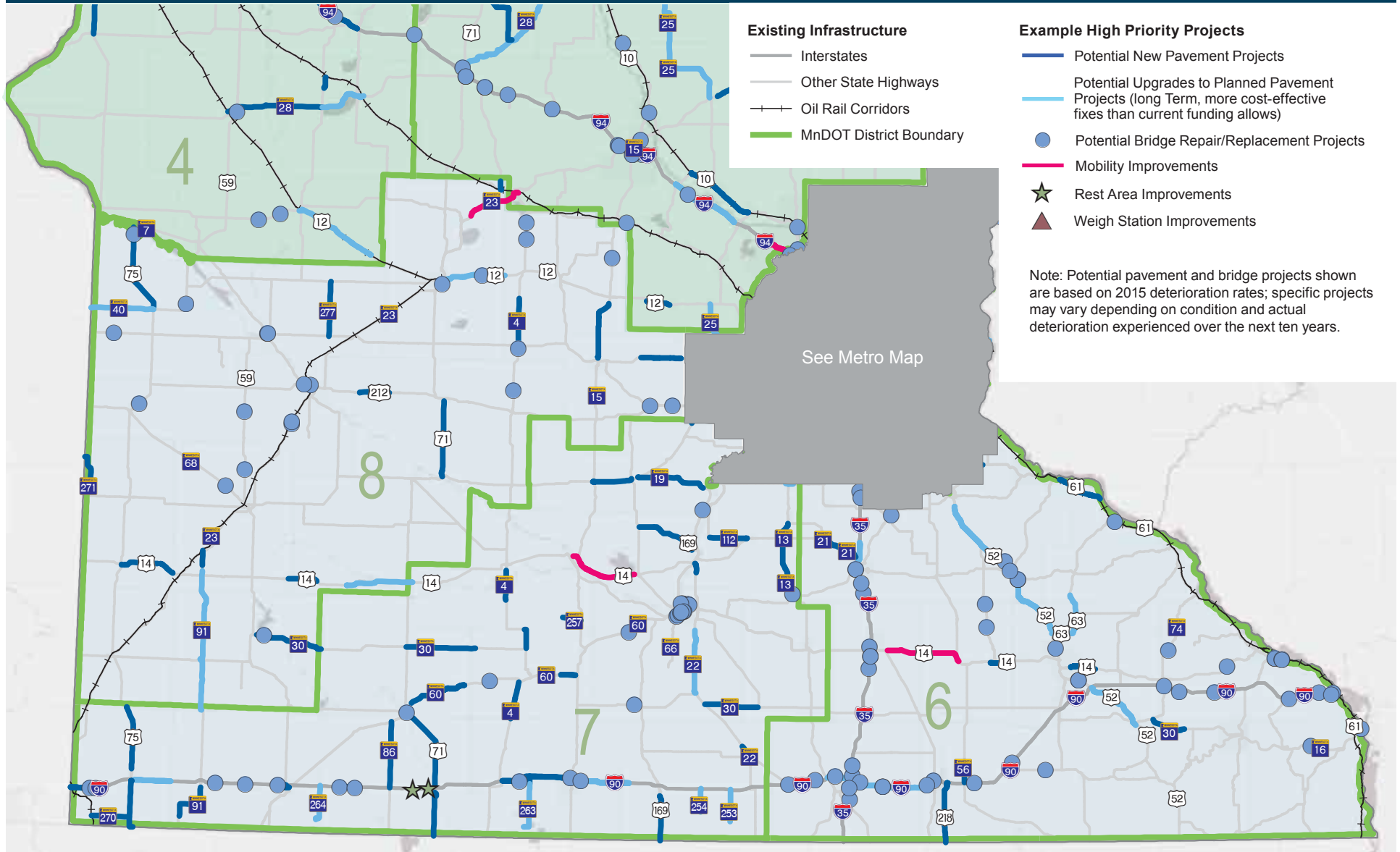
Existing Infrastructure

- Interstates
- Other State Highways
- +— Oil Rail Corridors
- MnDOT District Boundary

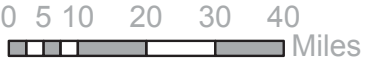
Note: Potential pavement and bridge projects shown are based on 2015 deterioration rates; specific projects may vary depending on condition and actual deterioration experienced over the next ten years.



Southern Minnesota: MNDOT Districts 6, 7 and 8



Note: Potential pavement and bridge projects shown are based on 2015 deterioration rates; specific projects may vary depending on condition and actual deterioration experienced over the next ten years.



MnDOT Metro District

Example High Priority Projects

- Potential New Pavement Projects
- Potential Upgrades to Planned Pavement Projects (long Term, more cost-effective fixes than current funding allows)
- Potential Bridge Repair/Replacement Projects
- Mobility Improvements
- Rehab Deep Stormwater Tunnels
- ▲ Weigh Station Improvements

Existing Infrastructure

- Interstates
- Other State Highways
- +— Oil Rail Corridors
- MnDOT District Boundary

Note: Potential pavement and bridge projects shown are based on 2015 deterioration rates; specific projects may vary depending on condition and actual deterioration experienced over the next ten years.

