

# The Yorth Approach: Restorative Development

---

 [yorthgroup.com/cities](http://yorthgroup.com/cities)

April 22, 2017

## Challenges for Cities

Cities face an exponentially expanding set of ‘wicked’ challenges – rapid urbanization, resource insecurity, climate volatility, deteriorating infrastructure, and socio-economic instability.

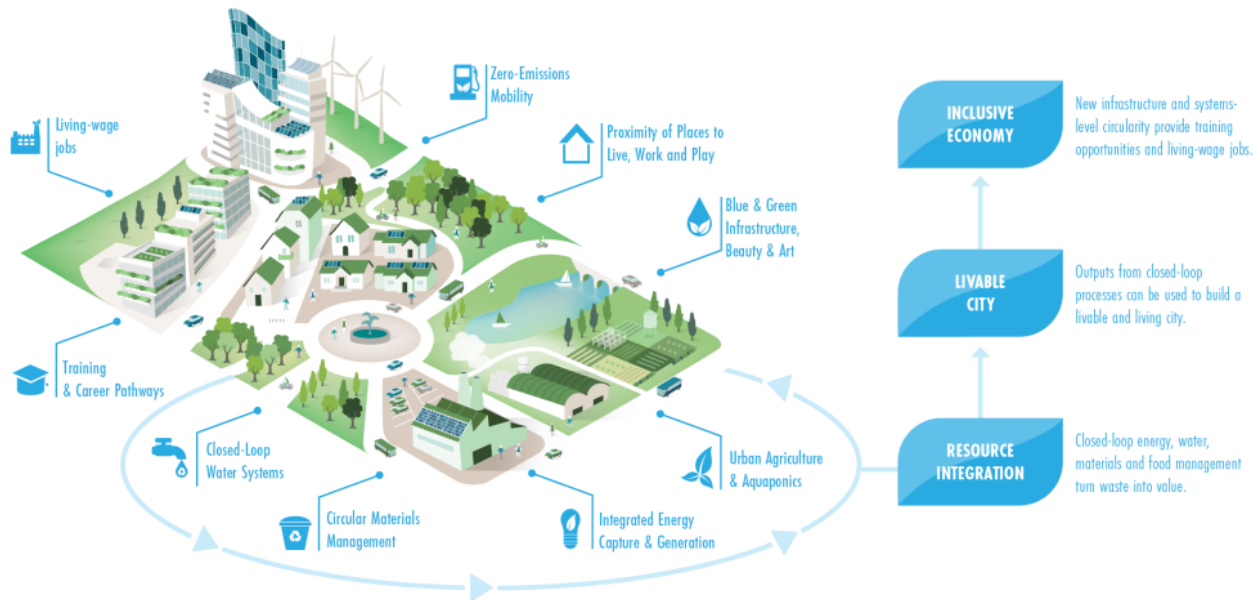
Water, energy, food production, and waste management are completely independent systems and are centralized, linear, and support a one-time use model (which is also called the take-make-waste economy). This leaves many synergies and benefits unrealized. Similar to our physical infrastructure, economic and social infrastructures have been built in silos, with urban planning only pivoting to a more holistic approach in recent years.

## Our Approach

Yorth helps cities overcome these challenges through systems-based innovation for restorative city development.

We strongly believe that sustainability at scale is only possible through a new public infrastructure and governance model. The transition to a circular economy requires an effective partnership between public and private entities to develop an integrated and restorative infrastructure that can catalyze new business models and industrial symbiosis. Restorative development presents an opportunity to build a new local economy and industry in a way that creates equitable growth and wealth for businesses and communities alike.

## HEALTH & WELLBEING IN A RESTORATIVE CITY



### Solutions for Cities

We provide a robust set of solutions that make restorative development clear, compelling, and actionable. Our high-performance district-scaled grid solutions integrate a range of traditionally separate utility functions to enhance resource security, resilience, and standards of living while reducing system-wide costs.

Our grid solutions integrate, amongst others:

- Solid materials capture, treatment, and use;
- Wastewater and stormwater capture, treatment, and use;
- Renewable energy generation and storage.

This creates the foundations for a restorative urban ecosystem, where waste and liabilities are converted to economic, social, and environmental value. It's the prerequisite for building a circular economy and will attract forward-thinking companies that are looking for reliable, high-quality used materials that they can remanufacture into new products. Just like mining for virgin resources provided the economic lifeblood for rural towns in the 20th century, so does “mining” for used resources present an opportunity for cities and metropolitan areas in the 21st century.

### Examples of Services Offered

- Regenerative Urbanism Designs
- Integrated Utility Hub (IUH) Designs
- Integrated Utility Grid (IUS) Designs
- Material Reclamation and Repurposing Strategies

Supporting our restorative design solutions, we utilize our proprietary Circular Insights™, a robust planning platform that helps cities assess their current urban systems challenges, while preparing strategic implementation roadmaps that guide them to a future state of integrated, circular, and restorative success.

- Equity measurement and reporting (environmental, social, economic, identity)
- Community Assessments
- Circular Economic Assessment and Modeling
- Performance Benchmarking & Assessment
- Policy & Regulatory Mapping for Circular Economy
- Financial Modeling for Circular Economy
- Long-term Infrastructure Plans
- Implementation Plans and Actions for Circular Economy

### **Key Benefits of the Systems-Based Approach**

---

- + Cities can achieve aggressive environmental, social, and economic development goals far faster and with less effort than incremental, green, and building-by-building approaches
- + Cross-silo challenges and traditionally inefficient group processes can be overcome through effective public-private collaboration
- + Profitable utility services business model invites private capital to bridge municipal funding gaps while supporting no cost public bonding
- + Enables assessment, design, and a funding mechanism that helps municipalities fund and build important infrastructure that traditionally has zero income against the investment (sunk cost infrastructure components)
- + High levels of innovation and resource security enables cities to attract top talent, businesses, PR, tourism, and investment, while supporting added density and development opportunities
- + Our objective is to drive a restorative and circular development model that empowers organizations and communities to do well by doing good – to generate economic prosperity through closed-loop and sustainable resource management, ecosystem restoration, and social enrichment

Copyright Yorth Group 2013-2020