

MFRC and Camp Ripley Partnership



Todd Holman, The Nature Conservancy
Jake Kitzmann, Camp Ripley Natural Resources Mgr.
MN Forest Resources Council, Forest History Center September 21, 2016





IMAGE by FITZ
ROBERT FITZSIMMONS
PHOTOGRAPHY



The Nature
Conservancy 



Crow Wing River Forest



Issues facing military training facilities



Background

Always Ready

- Section 2811 Defense Authorization Act 2002 authorized the Readiness and Environmental Protection Initiative (REPI)
- REPI is intended to address the growing concern of development or encroachment on the periphery of all military installations
- Department of Army used REPI to create the Army Compatible Use Buffer (ACUB) Program

The Issue

Internal

Military Training

- Noise
- Dust/Smoke



External

Land Use Changes

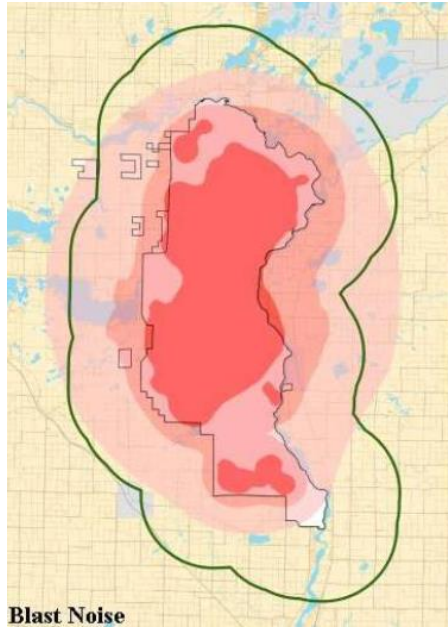
- Development Pressure
- Incompatible land use



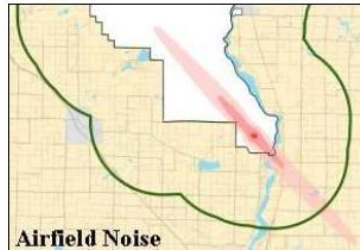
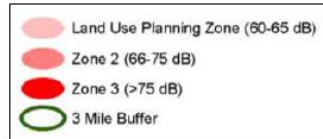
C
O
N
F
L
I
C
T

Noise analysis

Army Compatible Use Buffer



Noise Zones



ACUB Accomplishments (2004-2011)

DNR

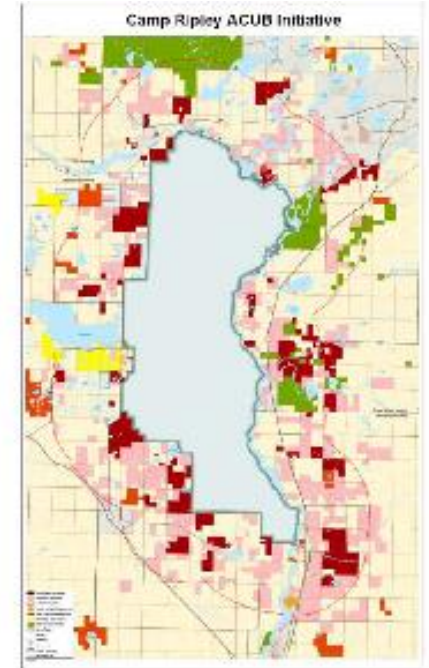
- +15 land deals
- +1,792 acres
- +\$4,054,000

BWSR

- +65 land deals
- +10,052 acres
- +\$13,392,500

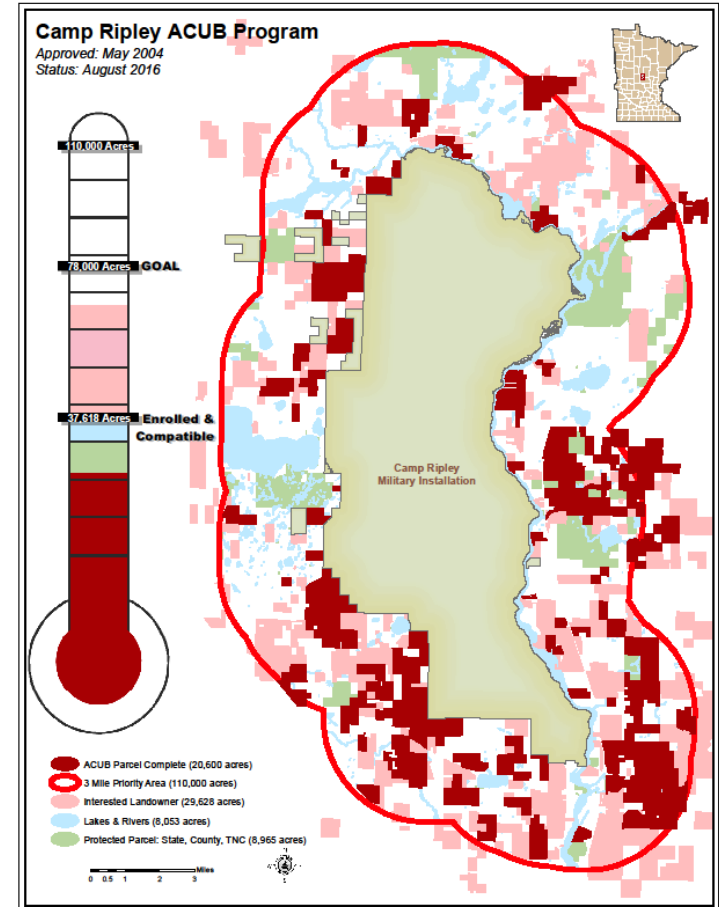
Landowners pending

- +227 parcels
- +32,598 acres
- +\$40 million estimate



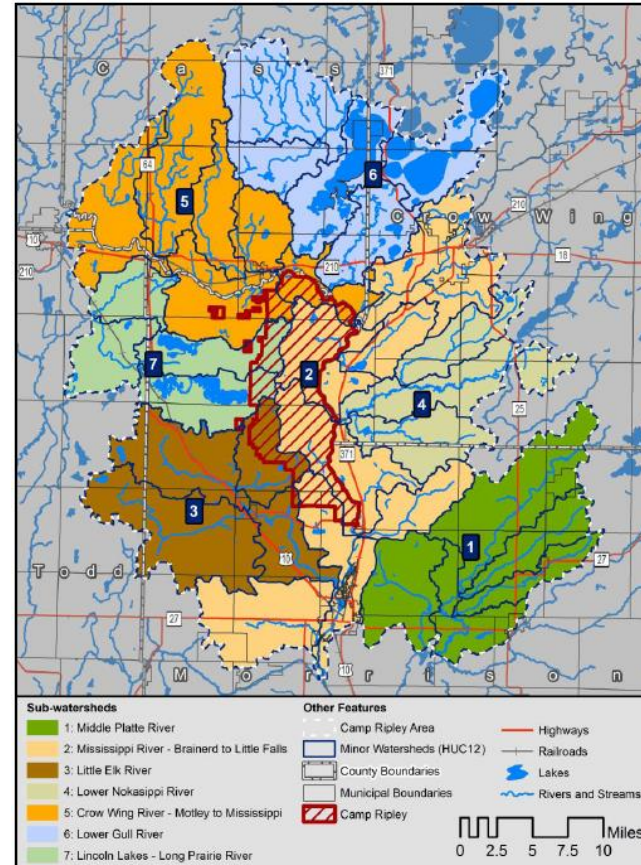
Camp Ripley Army Compatible Use Buffer (ACUB)

- Program started in 2004
- 3-mile buffer area
- Willing landowners
- 95% RIM easements
- Created Nokasippi WMA
- Over 200 landowners on waiting list



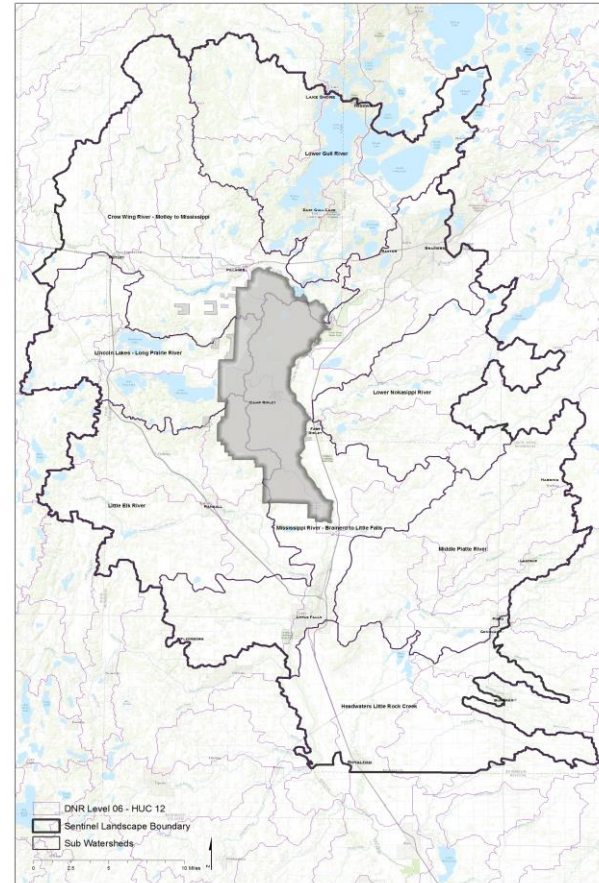
Landscape Stewardship Plan: MFRC and USFS

- Private Forest Mgmt.
- Forest near water
- Large patch connectivity
- Forest Stewardship plans
- 2c and SFIA enrollment
- Healthy Forest Reserve
- CWC LCCMR 300K PFM



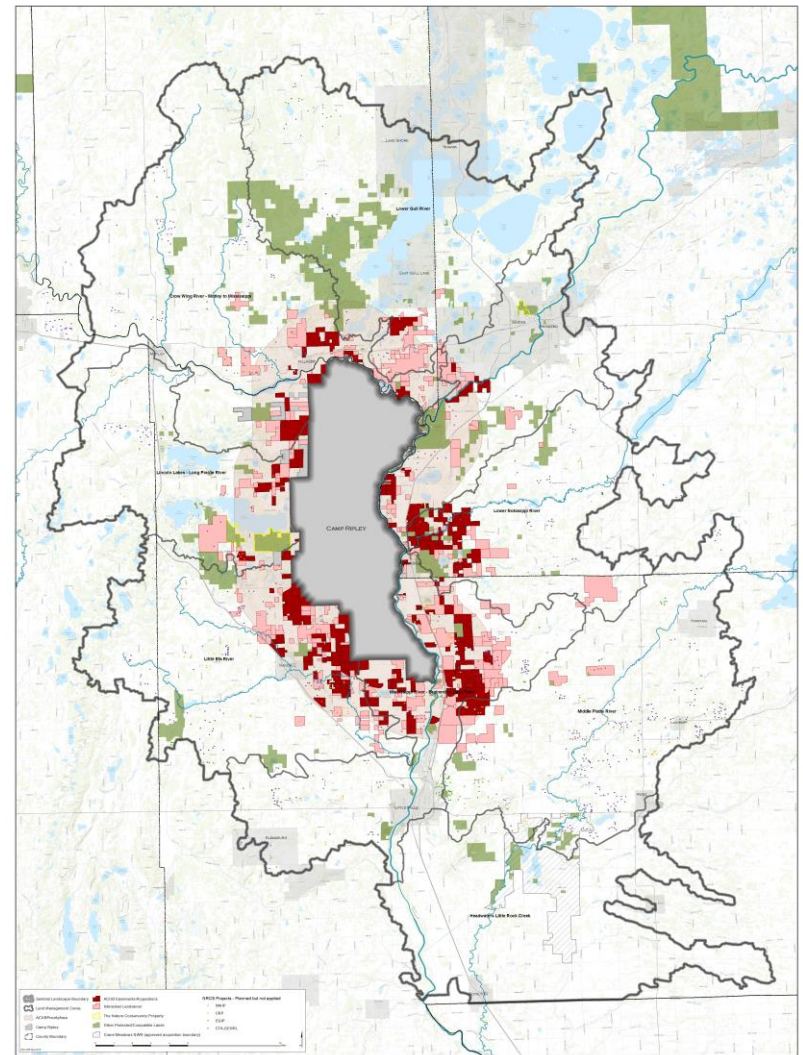
Camp Ripley Sentinel Landscape History

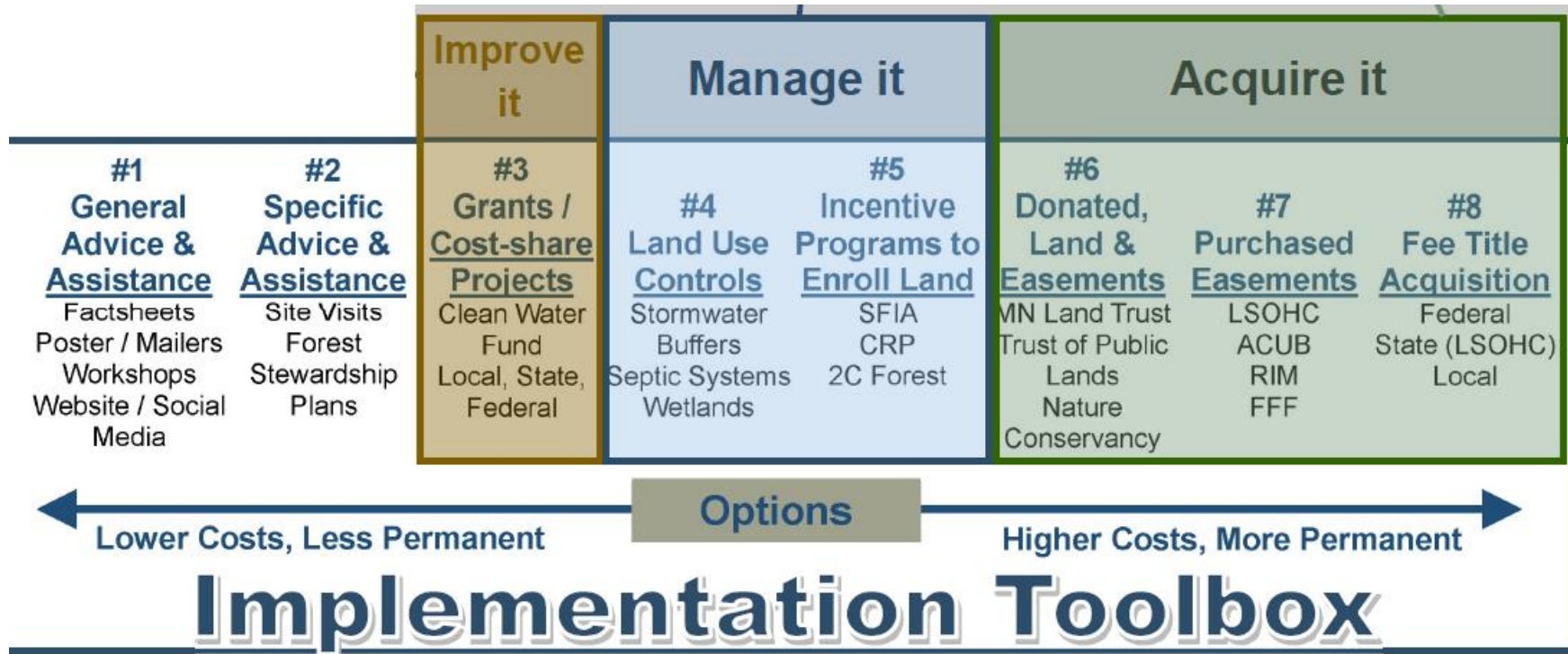
- MOU: DOD, USDA, DOI
- State designation 2015
- Federal Designation 2016
- Multi-agency work group
- Implementation Team



CRSL Program

- Protection: LSOHC RIM
- Protection: REPI RIM
- Protection: CWF RIM
- Protection: FFF DNR
- Protection: Private MHF
- Practices: PFM
- NRCS: RCPP







MINNESOTA HEADWATERS FUND

What parts of the landscape are most important (for clean water) ?

Where is clean water most at risk?

How much is enough?

Questions



MINNESOTA
HEADWATERS
FUND



Jake Kitzmann

Natural Resources Mgr.

jacob.n.kitzmann.mil@mail.mil

Todd Holman

Mississippi Headwaters

Program Director

tholman@tnc.org

