

# North Central Landscape Update

Rich Courtemanche, Chair  
North Central Landscape Committee

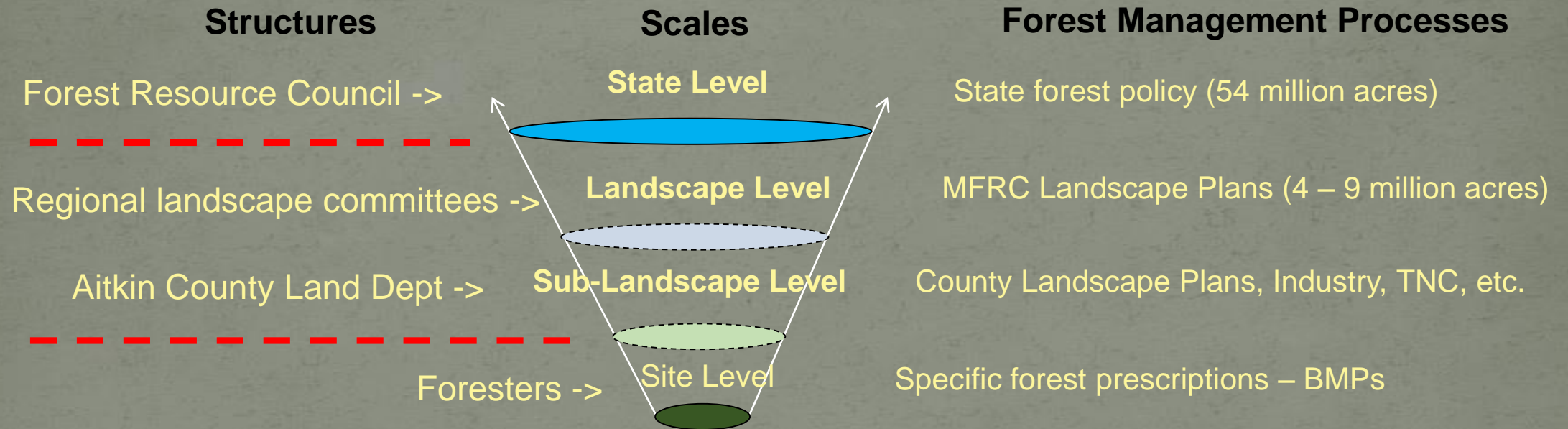
MFRC Meeting  
May 9, 2019

# Presentation Topics

1. **Overview** – landscape planning and coordination.
2. **Recap** – 2<sup>nd</sup> Generation NC Landscape Plan.
3. **Update** – what are we doing now.



# Scales of Landscape Planning & Coordination

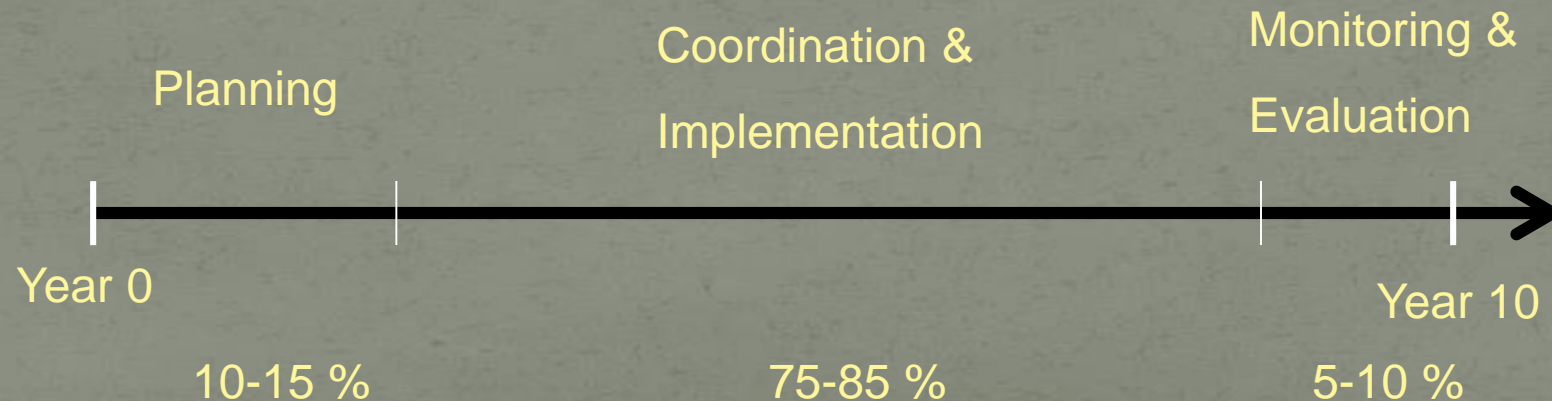


**"Landscape"** – a heterogeneous land area composed of interacting sustainable forest resources that are defined by natural features and socially defined attributes (SFRA).

# Landscape Level Timeframes

Assume a linear 10-year management horizon... how much time should:

- the planning process take?
- coordination and implementation?
- monitoring and evaluation?



# Landscape Planning & Coordination

## Landscape planning – 2<sup>nd</sup> generation:

- Approved – NE, SE (2014), NC (2017) plans.
- To be developed – EC (in progress), WC (2020), N (2021) plans.

## Landscape coordination – facilitate, support implementation:

- Information sharing and outreach.
- Provide guidance for partners' forest management plans.
- Provide recommendations – forest policy, research, and funding priorities.
- Support cross boundary management projects.

# 2<sup>nd</sup> Gen NC Plan Completed in 2017

- Diverse representation – strong commitment by volunteers.
- Streamlined schedule (12 months) with modest budget.
- Better understanding of issues – assessment, GIS maps and data, discussions.
- Better understanding of perspectives – presentations, facilitated discussions.



# NC Committee Membership/Participation

Committee Member	Organization	Committee Member	Organization
Allen Lysdahl	Hubbard County Land Dept.	Lindsey Ketchel	Leech Lake Area Watershed Foundation
Craig Engwall	Minnesota Deer Hunters Association	Nick Jensen	MN DNR - Eco and Water Res.
Dan Steward	Board of Soil and Water Conservation	Tom Strack	Crow Wing County Land Dept.
Darren Mayers	Crow Wing County SWCD	Rachel Peterson	Minnesota Logger Education Program
Dennis Thompson	Aitkin County SWCD	Rich Courtemanche	Aitkin County Land Dept. (Chairman)
DJ Bakken	Beltrami County Land Dept. (Vice Chair)	Sam Maas	Molpus Woodlands Group
Gene Larimore	Audubon, Jack Pine Coalition	Samantha Jones	Bemidji State Uni. - Geography Dept.
Heather Baird	MN DNR - Fisheries	Sawyer Scherer	UPM Blandin
Jacob Horbacz	Mille Lacs Band of Ojibwe	Steve Bartz	MN DNR - Forestry
Jim Gries	USFS Chippewa National Forest	Tim Terrill	Mississippi Headwaters Board
John Wallin	Minnesota Forestry Association	Will Cooksey	The Trust for Public Land
Keith Karnes	Leech Lake Band of Ojibwe - Forestry	Mike North	MN DNR - Wildlife
Kyle Gill	U of MN Cloquet Forestry Center		

Additional members serving on the Committee for a portion of the landscape planning process:

- Jake Frie, Crow Wing County Land Department
- Todd Holman, TNC
- Chris Brokl, consulting forester
- Beth Jacqmain, Blandin
- Ben Bagdon, MFI
- Susan Schmidt, TPL

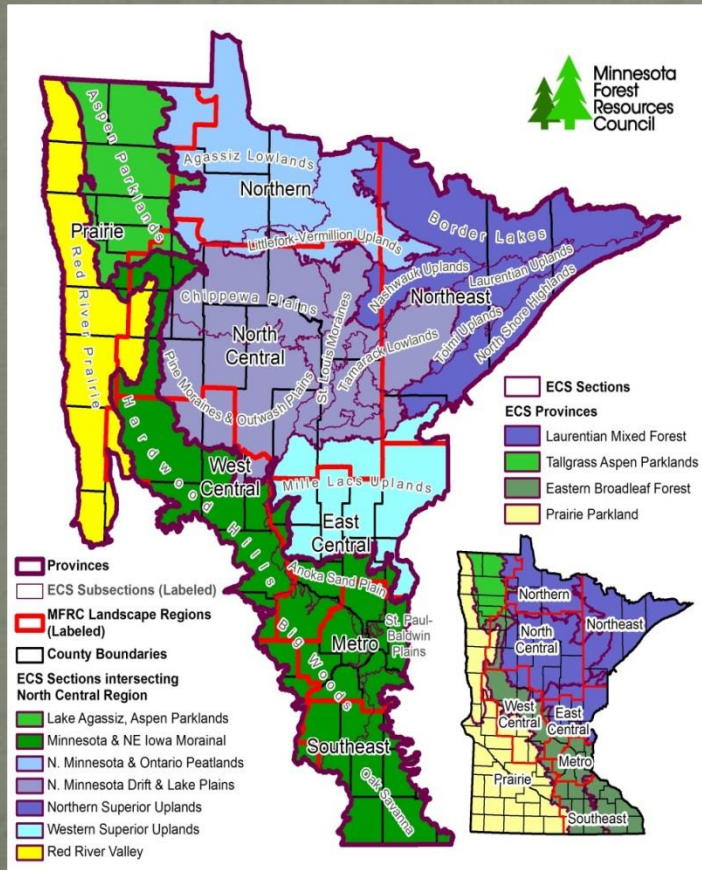
*Broad representation and consistent participation.*

# Council Guidance on Landscape Planning

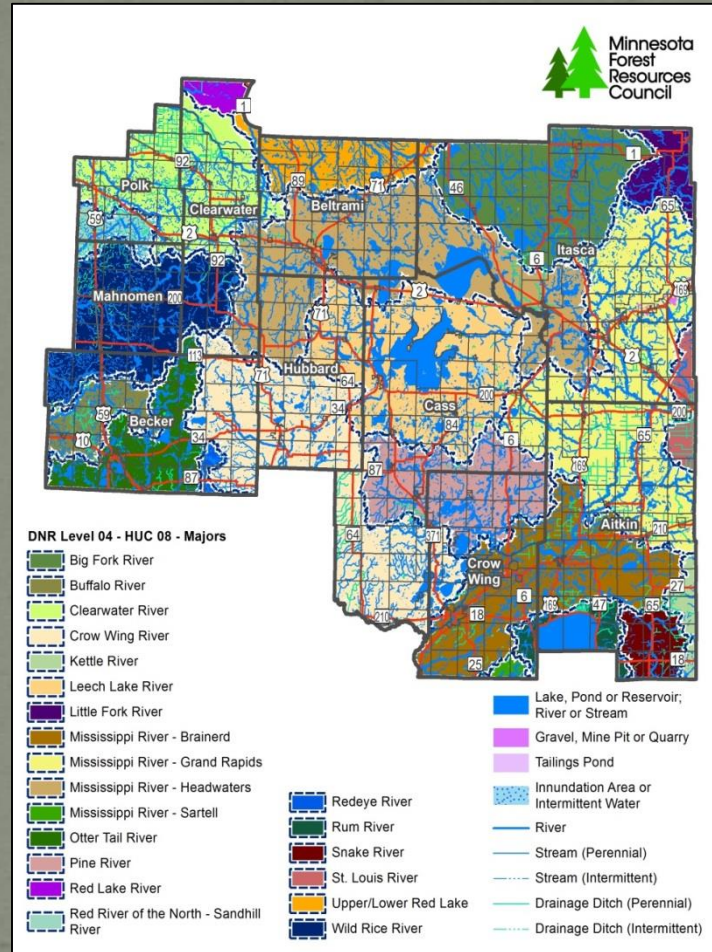
In developing the NC landscape plan, we were intentional in efforts to:

- Follow planning process established by the Council.
- Build on the 1<sup>st</sup> generation NC Landscape Plan.
- Acknowledge broad definition of “*Forest Resources*”.
- Balance ecological, economic and social needs and limits of forest resources.
- Recognize this is a guidance plan.
- Take advantage of new and emerging knowledge and technology.
- Seek ways to create “win-win-win” solutions.
- Explore ways to increase capacity in all partners through collaboration.

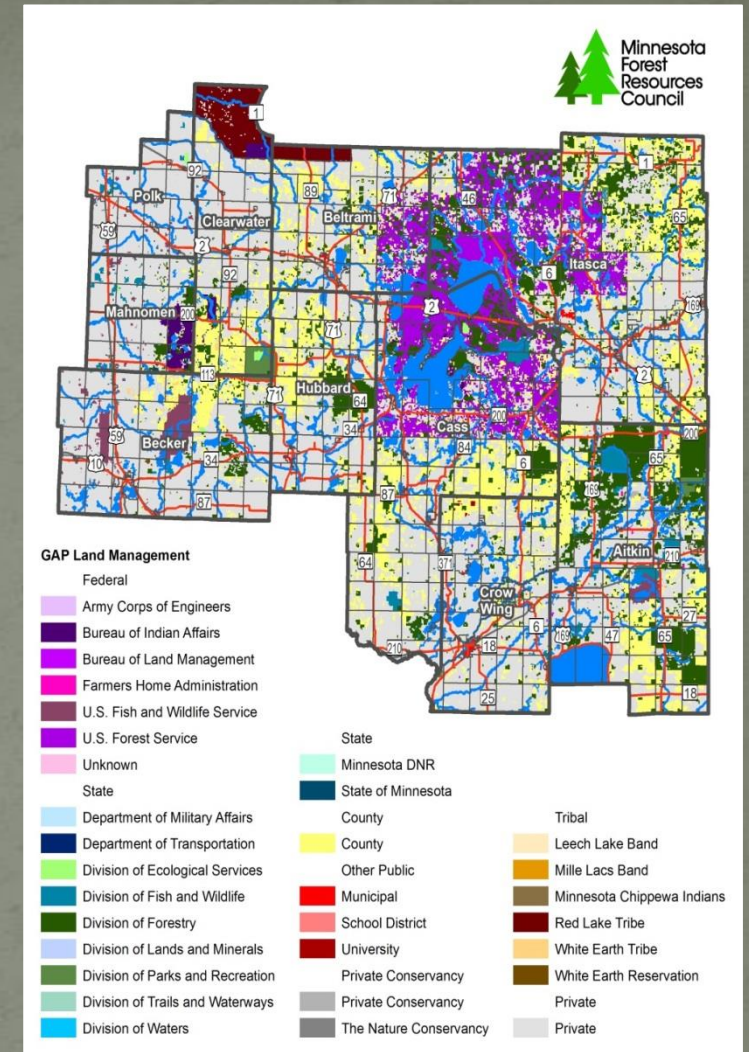
# Spatial Context



Ecological



Watersheds



Geopolitical / Land Management

# Vision: Where do we want to go?

Desired Future Conditions, Goals and Objectives

Ecological Mid-Level Direction

- Vegetation management guidance (NPCs)
- Climate adaptation guidance

Economic Mid-Level Direction

- Forest health
- Forest industry engagement

Social Mid-Level Direction

- Water quality
- Land use



# Recommendations to Local Units of Govt

## 1. County Land Departments

- Manage lands based on native plant communities based on natural disturbance regimes
- Discourage sale of tax forfeited lands
- Promote collaboration between neighbors in timber sales
- Promote decisions that support long term management

## 2. SWCDs

- Prioritize working areas based on watersheds and forests
- Develop water plans that protect working forests
- Develop stewardship plans

## 3. Planning Commissions

- Recognize the value of forests in land use decisions
- Encourage implementation of forest mgmt in ordinances
- Protect shorelines
- Control routes of OHVs so as to not damage resources

## 4. Payment in Lieu of Taxes (PILT)

- Support PILT

# Recommendations to Education Groups

1. School Districts / School Forests/ Environmental Learning Centers
  - Encourage districts to use environmental learning centers
  - Work to promote use and establishment of school forests
  - Seek funding to support youth education - school forests, Environmental Learning Centers
2. Support training of loggers and foresters
  - MLEP
  - SFEC
3. Support training of private landowners
  - Support DNR, Extension, MFA programs



Leech Lake Pines Collaborative field tour  
CNF, LLBO, DNR, Cass County



The Plan is approved...  
Now What?

# NC Committee Coordination Meetings

- Quarterly meetings – active, meaningful, well attended.
- Roles – facilitate and coordinate .
- Meetings provide for a clearing house of ideas, increases networking opportunities.
- Our work supports enhanced coordination in implementation of the Plan by land owners and managers across the landscape region.

Draft 3 – 4/11/18

## 2018 Meeting/Event Schedule North Central Landscape Committee

Meeting Locations:  
Backus, Grand Rapids, Pine River Minnesota – Other locations? \_\_\_\_\_, \_\_\_\_\_,

Month/ Location	Event/ Meeting	Topics and/or Actions
Wed, April 11, 2018  Pine River	Committee Meeting # 18-01	<b>Meeting Focus – Coordinate Forest Resource Planning</b> <ul style="list-style-type: none"> <li>• Presentation – DNR Forestry SFRMP process.</li> <li>• Presentation – CNF LRM process.</li> <li>• Committee 10-year work plan dev't.</li> <li>• Work session – project updates, funding dev't.</li> </ul>
Wed, June 13, 2018  Backus	Committee Meeting # 18-02	<b>Meeting Focus – Coordinate Forest Resource Planning – cont'd</b> <ul style="list-style-type: none"> <li>• Presentation – DNR Forestry SFRMP process.</li> <li>• Presentation – CNF LRM process.</li> <li>• Committee work program and budget dev't.</li> <li>• Annual Council meeting/tour prep – preparations.</li> <li>• Work session – project updates, funding dev't.</li> </ul>
Wed, Sept 12, 2018  Pine River	Committee Meeting # 18-03	<b>Meeting Focus – Coordinate Forest Resource Planning – cont'd</b> <ul style="list-style-type: none"> <li>• Presentation – County forest management plans.</li> <li>• Presentation – Tribal forest management plans.</li> <li>• Presentation – NGO and NIPF plans</li> <li>• Annual Council meeting/tour prep – preparations.</li> <li>• Work session – project briefs, project / funding dev't.</li> </ul>
Wed, Dec 12, 2018  Backus	Committee Meeting # 18-04	<b>Meeting Focus – Forest Health</b> <ul style="list-style-type: none"> <li>• Presentation – Annual forest health assessment – Jess Hartshorn, DNR.</li> <li>• Presentation – _____</li> <li>• NC landscape plan update.</li> <li>• Opportunity area projects – updates.</li> </ul>

- Joint mtg with the East Central and West Central committees?
- Joint mtg with MFRP / Bemidji, Grand Rapids FACs – future directions, partnering projects.
- Invasive species – gypsy moth quarantine, EAB, etc.
- Biomass opportunities and applications at various scales – Kristen Bergstrand, DNR Forestry
- Intergenerational wealth transfer – U of M Extension staff
- Tour – DNR Backus Nursery
- Tour – Aitkin County SWCD PFM project – US FS Grants 1 and 7
- Other topics?
- ?

MFRC – Landscape Program North Central Landscape Committee

# Update – Landscape Coordination Efforts

- Developed landscape plan outreach materials – brochures, summaries, presentations.
- Facilitating planning coordination with partners.
- Supporting collaborative cross boundary projects:
  - Aitkin NIPF Pilot Project
  - Tullibee Lake Project
  - Wild Rice Lakes Project
  - Family Resort Project
- Establishing accomplishment reporting systems.



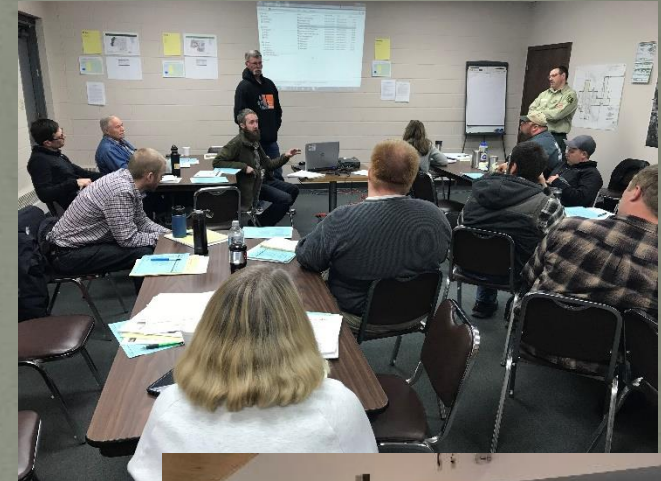
Tullibee lakes project development  
NC Committee partners

# Putting the Landscape Plan to Work

**Plan coordination focus:** provide guidance to partners' forest management plans.

**Presentation content:**

- Land base and forest resource assessment.
- Organization mandates and mission.
- Forest management approaches
- Review alignment with the MFRC landscape plan and site level guidelines.
- Explore cross boundary coordination opportunities.



How is it Working?

# Forest Management Projects

## Forested Watersheds

- Mississippi Headwaters Board
- BWSR – Priority Watersheds
- NIPF - Pilot Project
- Active Timber Sale GIS Layer

County Forest Road Funds

Inventory Updates – LiDAR and  
Inventory modernization efforts



# Tourism Projects

Mille Lacs Lake Trail Connection

Crow Wing Aitkin Trail Project

Third Guide Horse Trail



# Education Projects

## Environmental Learning Centers

- Long Lake - Master Naturalist Program on Silviculture
- No Child Left Inside (HF 133) – ACLD supports

## Forest To Tap (F2T)

- Arbor Day Kick Off
- Partnership with Dovetail Partners @Harvest Moon Brew Fest Sept 7



# Contact Info

## New Office:

Rich Courtemanche, Land Commissioner

Aitkin County Land Dep't

502 Minnesota Ave N

Aitkin, MN 56431

218-927-7364

[rich.courtemanche@co.aitkin.mn.us](mailto:rich.courtemanche@co.aitkin.mn.us)

[acld@co.aitkin.mn.us](mailto:acld@co.aitkin.mn.us)

Dennis Thompson – New Assistant Land Commissioner