

How will we do it?

Minnesota Forest Resource Council

In 1995 the Minnesota Legislature created the Minnesota Forest Resources Council (MFRC) and gave it the job of ensuring Minnesota's forests are able to meet the state's economic, environmental, and social needs now and in the future.

Recognizing the need to manage forests on a large scale, the MFRC set up a landscape-level forest resources program and divided the forested part of Minnesota into six "regional landscapes." These multi-county forest landscapes possess unique social, economic, and ecological characteristics.

Regional Landscape Committees

The MFRC then brought together landowners, land managers, and others interested in forests within each landscape and tasked them with answering three questions for their forests:

- Where have we been, and where are we today?
- Where do we want to go?
- How will we get there?

This brochure summarizes the Northeast Landscape Committee's response to those questions. It also provides suggestions on what each of us can do to help achieve the committee's vision.

Postage

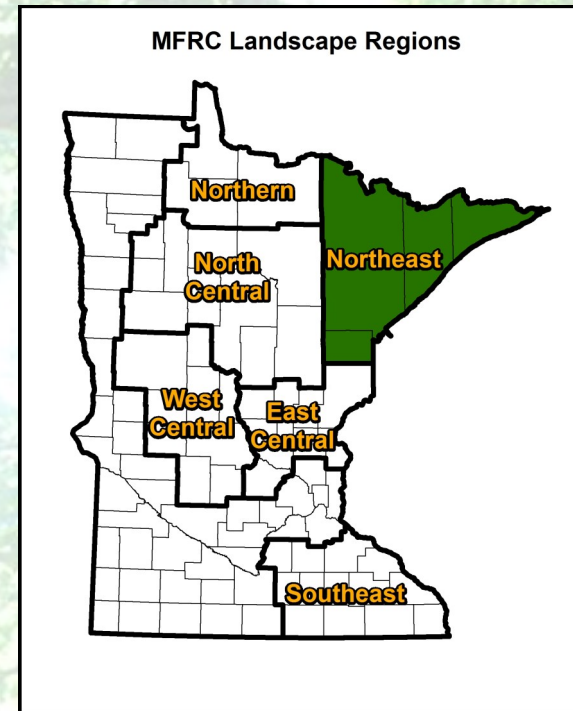
201A Green Hall
1530 Cleveland Avenue N
Saint Paul, MN 55108-6146



Managing Forests at the Landscape Level

A cooperative approach to sustainability for public, private, and tribal landowners.

Northeast Landscape Region



Covers:
7.3 Million acres

Includes:
Carlton, Cook, Lake, and St Louis Counties



Teaming up for Forests



What is landscape-level forest management?

Landscape-level forest management is when public, private, and tribal landowners and citizens cooperatively develop and carry out a coordinated plan for forests covering thousands or millions of acres.

Why is it important?

Minnesota's forests are owned by a great diversity of interests who's forestland ownership ranges from less than one acre to over one million acres. These forests provide many benefits including timber, habitat, recreation, jobs, clean air and water. To offer these benefits sustainably, the forests need to be managed in a way that reaches across ownership boundaries.



Where have we been and where are we today?

The Northeast Landscape

The Northeast Landscape covers 7.3 million acres in Carlton, Cook, Lake, and St. Louis counties. There has been little or no net loss in forestland since before European settlement. Today, 85% of the land is forested. While most of the historically forested areas are still forested, the tree species composition and age has changed.

The region's economy is directly tied to its rich forest resources through nationally recognized outdoor recreation opportunities and a strong forest products industry. Coordinated management of these forest resources is crucial for the sustainability of the region's wildlife, waters, ecological systems, and people.

Key Issues and Challenges

- Maintaining a sustainable and predictable supply of timber
- Demand for multi-use outdoor recreation opportunities
- Forest composition and wildlife habitat
- Wildfire and rural development
- Forest pests, invasive species, and disease
- Diverse ownership of forestlands
- Water quality
- Climate change
- Mining expansion
- Balancing ecological, economic, and social concerns

Where do we want to go?

Northeast Landscape Goals

The Planning Committee believes the following goals should be pursued over the next ten to twenty years to promote sustainable forest resources across the region.

Forest Land Base

- Goal 1. Encourage the Retention of Forestland.

Vegetation and Terrestrial Wildlife

- Goal 1. Promote Sustainable Forest Management.
- Goal 2. Maintain, Restore, and Enhance Native Biodiversity, Including Wildlife Habitat and Populations.

Water Resources and Aquatic Wildlife

- Goal 1. Maintain and Enhance Water Resources.

Forest Products

- Goal 1. Enhance Forest Health and Productivity.
- Goal 2. Retain, Expand, and Diversify the Regional and Local Forest-based Economies.

Recreation

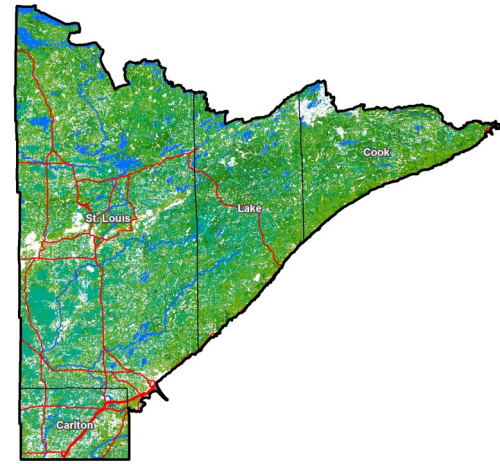
- Goal 1. Promote High Quality Forest-based Experiences for People Recreating in the Region.
- Goal 2: Enhanced Visitor Experience and Increased Visitor Knowledge of Outdoor Recreation Opportunities.

Minerals

- Goal 1. Forest Resources Issues are Considered in Minerals Exploration, Mining Development, and Associated Land Use Planning.

Social and Cultural Uses and Values

- Goal 1. Promote High Quality Forest-based Experiences for People Living, Working, and Visiting the Region.
- Goal 2. Encourage Sustainable Land Use.
- Goal 3. Strengthen Public Awareness.



Vegetation Goals

The Planning Committee developed specific vegetation goals for the following Native Plant Community Systems, Classes, and Types.

Fire-Dependent Forest/Woodland System

- FDn32: Northern Poor Dry-Mesic Mixed Woodland
- FDn33: Northern Dry-Mesic Mixed Woodland
- FDn43: Northern Mesic Mixed Forest
 - FDn43a: White-Red Pine Forest
 - FDn43b: Aspen-Birch Forest

Mesic Hardwood Forest System

- MHn35: Northern Mesic Hardwoods and MHn45: Northern Mesic Hardwoods (Cedar)
- MHn44: Northern Wet-Mesic Boreal Hardwood

Acid Peatland System

Forested Rich Peatland System

Wet Forest System

For more information regarding vegetation goals, visit: http://mn.gov/frc/docs/NE-Landscape-Plan-2014_Final-Draft-Web-Version--.pdf

How will we get there?

Get People Involved!

Whether you're an interested citizen, a city or township official, a member of a property-owner association or other nonprofit organization, there are many ways to get involved. Remember, you don't have to be a forester to be concerned about - and do something about - sustaining and managing our state's forests.

How can I get involved?

Here are two initial steps for getting involved and learning more about the Northeast Landscape Program:

- Visit MFRC webpage and review a copy of the [Northeast Landscape Forest Resources Plan](#) to learn more about the value of landscape planning, as well as the specifics of the Northeast Plan.
- Incorporate appropriate landscape planning goals, objectives, and action items at your site.

Many more opportunities for active involvement are available to you on the MFRC Website and in the Northeast Landscape Plan.

For more information, visit the following websites:

MFRC: www.frc.state.mn.us

DNR: www.dnr.state.mn.us

MFA: www.mnforest.com