

North Central Landscape Demographic Data Report

**A support document to the
2nd Generation MFRC North Central Landscape Plan**

May 2017



Minnesota Forest Resources Council (MFRC)
Landscape Technical Document #LTxxxx
©Copyright 2017, Minnesota Forest Resources Council
This document is online at: <http://mn.gov/frc/north-central-committee.html>.

Information about the Minnesota Forest Resources Council and the Landscape Program can be found at www.frc.state.mn.us.

Equal opportunity to participate in and benefit from Minnesota Forest Resources Council programs is available to all individuals regardless of race, color, creed, religion, national origin, sex, marital status, status with regard to public assistance, age, sexual orientation, or disability. Discrimination inquiries should be sent to the Minnesota Forest Resources Council, 1530 Cleveland Ave. N, St. Paul, MN 55108; or the Equal Opportunity Office, Department of the Interior, Washington, D.C. 20240.

This information is available in an alternative format upon request.

Report prepared by: David Henkel-Johnson (MFRC support contractor) and Michael Lynch (former MFRC member).

GIS analysis and map creation by: Jeff Reinhart (MFRC Staff).

Please cite this document as:

Minnesota Forest Resource Council. 2017. *North Central Landscape Demographic Data Report*. Landscape Program Document #LTxxxx. Minnesota Forest Resource Council, St. Paul, Minnesota. Available online at www.frc.state.mn.us.



Table of Contents

Table of Contents	i
Executive Summary	ii
Table of Tables	v
Table of Figures	vi
Resources	vii
Setting	1
Population Trends and Projections	2
Population Trends	2
Racial Diversity.....	2
Population Projections	6
Household Trends and Projections	8
Employment Trends and Projections	11
Earnings and Income Trends	16



Executive Summary

The Minnesota Forest Resources Council was established in 1995 by the Minnesota Legislature to provide advice to public and private organizations on forest sustainability issues. This legislation provided authorization for establishing regional landscape committees to foster landscape-based forest resource planning and coordination. These regional committees provide an opportunity to involve private citizens, forestry professionals, and members of various interest groups in developing and implementing landscape-level plans that promote forest sustainability. From 1998 to 2005, landscape plans were prepared for each of the six forested regions in the state.

The North Central Landscape Plan was first completed in 2003. This Demographic Data Report was developed to support the revision of the 2003 Plan to reflect new findings, conditions, and changes in regional goals and strategies. This Demographic Data Report summarizes the best available data from the U.S. Census Bureau, U.S. Bureau of Labor Statistics, Minnesota Department of Employment and Economic Development, the American Community Survey, and Minnesota State Demographic Center on regional population and employment trends and projections.

Key findings include:

Population Trends and Projections

- **The region has experienced fluctuating population growth.** The population of the North Central Landscape has grown at varying rates over the past 5+ decades, but has experienced positive growth overall (44% from 1960 to 2015). County level growth rates show some additional variability; however, recent growth across the region is less than the state-wide growth rate.
- **Overall racial diversity is limited; however the region has a much higher percentage of American Indians than the state-wide average.** Racial diversity is low across the North Central Landscape. The significant exception to this generalization is for persons of American Indian decent. This population greatly exceeds the state-wide distribution (5.9% vs 1.0%) and is even more pronounced in Mahnommen County where 41.1% of the population is American Indian alone and an additional 8.0% consists of two or more races.
- **Regional projected population growth is lower than Minnesota overall and is widely variable among counties.** Despite overall projected population growth through 2045, variability in the rate of change exists within the region. Becker, Beltrami, and Mahnommen are projected to increase at a higher rate than the state-wide average (13.4%) while Aitkin is expected to decline by 13.7% between 2015 and 2045.
- **The region's population is aging.** The >65 year-old age group is projected to be the fastest growing age group through 2045.

Household Trends and Projections

- **The region has lower income, but higher homeownership rates compared to Minnesota overall.** Median household income is lower (10 of 10 counties), but homeownership rate is higher (8 of 10 counties) in the North Central Landscape compared to the state-wide averages. The median value of owner-occupied housing units is lower than the state-wide average in all counties.

- **Lower than projected state-wide growth in the number of households.** While region-wide household growth projections fall below the state-wide average, Beltrami County is expected to outpace overall state-wide household growth by 2040.

Employment Trends and Projects

- **Employment numbers indicate that the region is recovering from the Great Recession more slowly than the rest of the state.** Five of the ten counties in the North Central Landscape have experienced overall negative employment growth since 2006 (Aitkin, Crow Wing, Hubbard, Mahnommen, and Polk) but rose more in Becker, Beltrami, and Clearwater than the overall state employment growth.
- **Retail Trade, Health Care and Social Assistance, Accommodation and Food Services, and Manufacturing are the largest employment sectors in most of the North Central Minnesota Counties.** Together these sectors account for over 54,000 jobs, 47.4% of the total number of industry reported employees in the region.
- **Forest based economic sectors are important employers to the region.** Wood Products Manufacturing was a reported industry in four of the ten counties accounting for over 700 jobs in the North Central region. Agriculture, Forestry, Fishing and Hunting was a reported industry in four of the counties and accounts for over 1,300 jobs. Many of these jobs in the western portion of the region are likely agriculture jobs (Polk County had 599) however there are more agriculture and farm jobs that are proprietary and therefore do not appear in this analysis.
- **The majority of counties in the region have a higher unemployment rate than the state-wide average.** Despite ongoing recovery from the Great Recession, many counties in the region retain a higher-than-average unemployment rate compared to the state as a whole. The unemployment rate in the North Central Landscape was 5.5% in 2015, a substantial decrease from the 9.4% level it reached in 2009 following the Great Recession and equal to the pre-Recession rate in 2006. The unemployment rate in this region has generally been higher than the state and national average, but since the 2008 recession it has either been lower or very near to the national average. No counties in the MFRC North Central Landscape had an unemployment rate below the state average in 2015. The unemployment rate in Clearwater County has been consistently higher than the other counties in the region (9.2% in 2015).

Earnings and Income Trends

- **Per capita income is lower than the state-wide average.** There are no counties in the region which exceed the state average. The highest-income county in the region is Crow Wing County (\$26,974) and the lowest-income county is Mahnommen (\$19,175).
- **Wages fall below the state-wide average.** The regional average wage is more than \$16,000 less than the state and national average. Every county in the region has a lower wage than the state and national average; however, Itasca and Clearwater County workers received the highest per worker wage by nearly \$2,000 over the next highest county in the region. Crow Wing County workers earned over \$300,000 in total wages more than the next highest-earning county in 2015.
- **The region has higher poverty rates than the state-wide average.** All counties except Crow Wing are above the state-wide levels of persons below poverty level with the highest

rates in Mahnomen (19.6%) and Beltrami (18.5%) counties. Five of the ten counties in the region had lower poverty rate than the United States overall.

Note to Reader: Additional regional data can be found in the “*North Central Landscape Conditions & Trends Report*” (<http://mn.gov/frc/north-central-committee.html>).



Table of Tables

Table 1. Population estimates for Minnesota and counties in the North Central Landscape, 1960-2015.....	3
Table 2. Race and ethnicity distribution of Minnesota and counties in the North Central Landscape, 2014.	5
Table 3: Population projections for Minnesota and counties in the North Central Landscape, 2015-2045.	6
Table 4. Population projection by age group for counties in the North Central Landscape, 2015-2045.....	7
Table 5. Per capita and household earnings, cost, and ownership rate for Minnesota and counties in the North Central Landscape, 2010-2014.	9
Table 6. Household estimates and projections for Minnesota and counties in the North Central Landscape, 2015-2040.	10
Table 7. Mean annual employment numbers for Minnesota and counties in the North Central Landscape, 2006-2015; all industries, ownerships, and establishment sizes.	12
Table 8. Number of employees by employment sector in the ten North Central Landscape counties, 2015.	13
Table 9. Percent unemployed for the U.S., Minnesota, and counties in the North Central Landscape, 1990- 2015.	15
Table 10. Annual establishments, employment, and wages for the U.S., Minnesota, and counties in the North Central Landscape, 2015; all industries, ownerships, and establishment sizes.	17



Table of Figures

Figure 1. MFRC Landscape Regions..... 1
Figure 2. 2010 population density by minor civil division..... 4
Figure 3. Percent unemployed for the U.S., Minnesota, and counties in the North Central Landscape, 1990-2015. 15
Figure 4. Per capita annual income for the U.S., Minnesota, and counties in the North Central Landscape, 2010-2014; based on 2014 dollars. 17
Figure 5. Average weekly wage for the U.S., Minnesota, and counties in the North Central Landscape, 2015; all industries, ownerships, and establishment sizes. 18
Figure 6. Percent of population with incomes below the poverty level for the U.S., Minnesota, and counties in the North Central Landscape, 2010-2014. 18
Figure 7. Percent of state-wide population below poverty level by minor civil division, 2010. 19



Resources

American Community Survey, 2010 and 2011: www.census.gov/acs

Minnesota Department of Employment and Economic Development (MN DEED): www.mn.gov/deed

Minnesota Forest Resources Council (MFRC): <http://mn.gov/frc/>

Minnesota State Demographic Center: www.demography.state.mn.us

United States Bureau of Labor Statistics: www.bls.gov

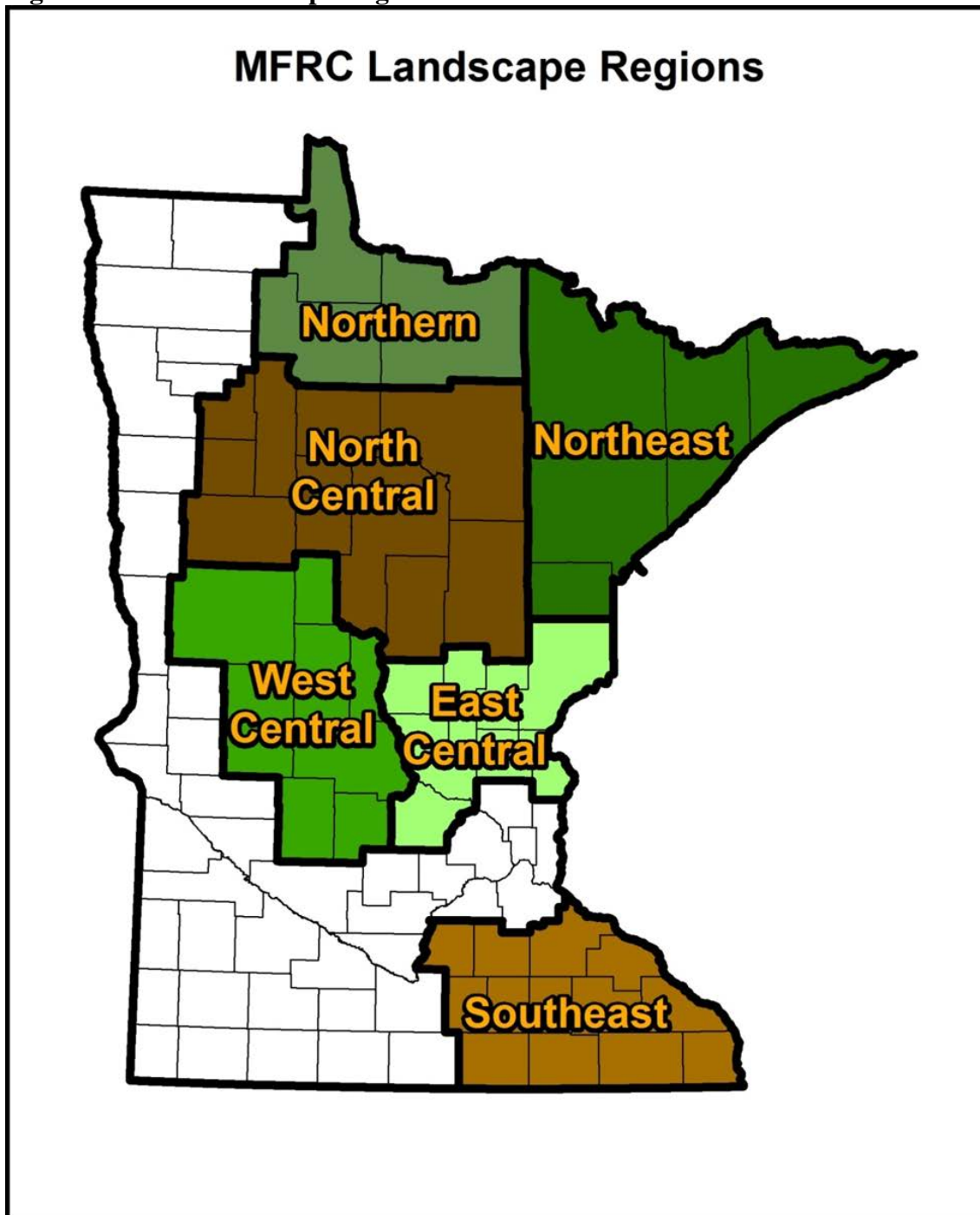
United States Census Bureau: www.census.gov; QuickFacts: <http://www.census.gov/quickfacts/>



Setting

The Minnesota Forest Resources Council defines the North Central Landscape as the following ten county area: Aitkin, Becker, Cass, Clearwater, Crow Wing, Hubbard, Itasca, and Mahnommen counties, in addition to the southern half of Beltrami County and eastern half of Polk County.

Figure 1. MFRC Landscape Regions.



Source: Minnesota Forest Resources Council.



Population Trends and Projections

Population Trends

Minnesota's population has grown at a fairly steady rate of between 7-8% per decade since 1970, with the exception of a notable jump of 12.4% between 1990 and 2000 (Table 1). The MFRC North Central Landscape boundary splits Beltrami and Polk Counties but these counties could not be split for the current population estimates and therefore this summary does not represent the true population of the region. The population of this modified North Central Landscape has experienced inconsistent population changes over the last 55 years. Rates of change have varied from near stable (1960-70 = 0.4%; 1980-90 = -0.2%) to outpacing the state-wide growth (1970-80 = 16.5%; 1990-2000 = 13.3%). According to 2010 U.S. Census data, population distribution is fairly uniform across the region, with the exception of concentrations in city centers including Bemidji, Brainerd, Detroit Lakes, Grand Rapids, and Park Rapids (Figure 2).

Current data indicates that eight counties in the region experienced growth between 2010 and 2015 (Becker, Beltrami, Clearwater, Cass, Crow Wing, Hubbard, Itasca, and Mahnomen), one remained relatively stable (Polk), and one experienced population decline (Aitkin).

Racial Diversity

Overall, the North Central Landscape contains less racial diversity than the state of Minnesota as a whole (Table 2). The significant exception to this generalization is for persons of American Indian decent. This population greatly exceeds the state-wide distribution (5.9% vs 1.0%) and is even more pronounced in Mahnomen County where 41.1% of the population is American Indian alone and an additional 8.0% consists of two or more races.

Most of the counties in the North Central Landscape are far below the state-wide ethnic diversity average with only one of the region's ten counties containing a higher percent Hispanic or Latino people than the state-wide average (Polk County).

Table 1. Population estimates for Minnesota and counties in the North Central Landscape, 1960-2015.

	1960	1970	1980	1990	2000	2010	2000 - 2010 % Change	2015 Estimate	2010 - 2015 % Change
Aitkin	12,162	11,403	13,404	12,425	15,301	16,202	5.9%	15,702	-3.1%
Becker	23,959	24,372	29,336	27,881	30,000	32,504	8.3%	33,386	2.7%
Beltrami	23,425	26,373	30,982	34,384	39,650	44,442	12.1%	45,672	2.8%
Cass	16,720	17,323	21,050	21,791	27,150	28,567	5.2%	28,706	0.5%
Clearwater	8,864	8,013	8,761	8,309	8,423	8,695	3.2%	8,803	1.2%
Crow Wing	32,134	34,826	41,722	44,249	55,099	62,500	13.4%	63,428	1.5%
Hubbard	9,962	10,583	14,098	14,939	18,376	20,428	11.2%	20,655	1.1%
Itasca	38,006	35,530	43,069	40,863	43,992	45,058	2.4%	45,435	0.8%
Mahnomen	6,341	5,638	5,535	5,044	5,190	5,413	4.3%	5,457	0.8%
Polk	36,182	34,435	34,844	32,498	31,369	31,600	0.7%	31,533	-0.2%
North Central Landscape*	207,755	208,496	242,801	242,383	274,550	295,419	7.6%	298,777	1.1%
Minnesota	3,413,864	3,804,971	4,075,970	4,375,099	4,919,479	5,303,925	7.8%	5,489,594	3.5%

Source: U.S. Census Bureau, Population Division; Annual Estimates of the Resident Population: April 1, 2010 to July 1, 2015. Release Date: December 2015.

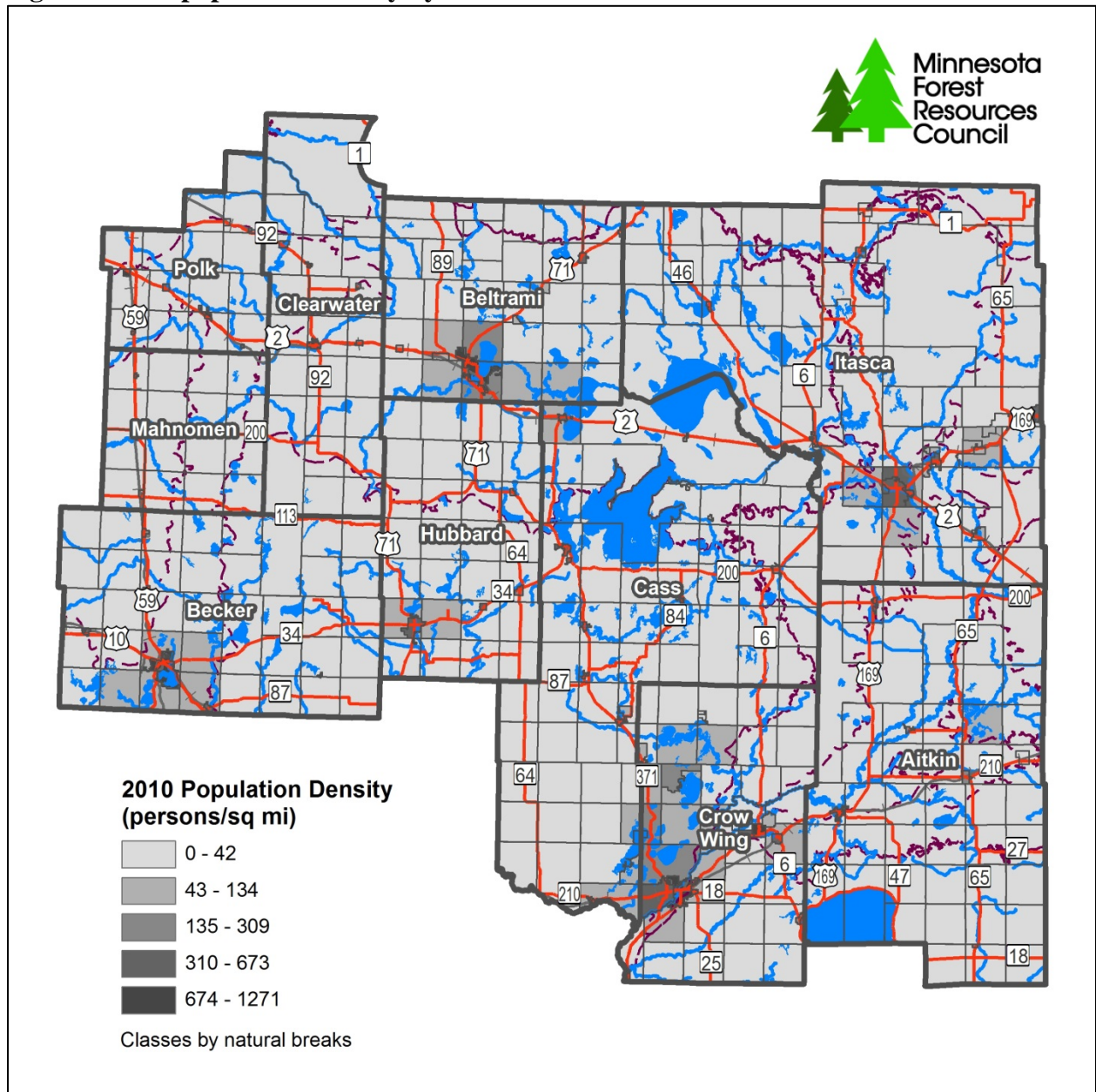
Notes – the U.S. Census Bureau determines where people should be counted during a census using the residence rule, which says:

- Count people at their usual residence, which is the place where they live and sleep most of the time.
- People in certain types of facilities or shelters (i.e., places where groups of people live together) on Census Day should be counted at the facility or shelter.
- People who do not have a usual residence, or cannot determine a usual residence, should be counted where they are on Census Day.

Additionally, people who live at more than one residence, such as people who travel seasonally, are counted at the residence where they live and sleep most of the time. If time is equally divided, or if usual residence cannot be determined, they are counted at the residence where they are staying on census day.

* The MFRC North Central Landscape splits Beltrami and Polk Counties. These counties could not be split for these population estimates and therefore the 'North Central Landscape' summary row does not represent the true population of the region.

Figure 2. 2010 population density by minor civil division.



Source: MN Geospatial Commons.

Table 2. Race and ethnicity distribution of Minnesota and counties in the North Central Landscape, 2014.

	Aitkin	Becker	Beltrami	Cass	Clearwater	Crow Wing
White alone (a)	95.4%	88.0%	74.4%	85.4%	92.4%	96.6%
Black or African American alone (a)	0.4%	0.4%	0.9%	0.4%	1.6%	0.8%
American Indian and Alaska Native alone (a)	2.2%	7.3%	20.1%	10.3%	1.3%	1.1%
Asian alone (a)	0.3%	0.4%	0.9%	0.5%	1.1%	0.5%
Native Hawaiian and Other Pacific Islander alone (a)	0.0%	0.0%	0.1%	0.3%	0.0%	0.0%
Two or More Races	1.6%	3.5%	3.3%	3.1%	2.7%	0.9%
Hispanic or Latino (b)	1.1%	1.6%	1.8%	1.5%	1.5%	1.2%
White alone, not Hispanic or Latino	94.6%	87.2%	73.7%	84.6%	86.1%	95.6%
	Hubbard	Itasca	Mahnomen	Polk	North Central Landscape*	Minnesota
White alone (a)	94.6%	93.1%	49.1%	92.6%	89.5%	85.2%
Black or African American alone (a)	0.6%	0.4%	0.6%	1.1%	0.8%	5.4%
American Indian and Alaska Native alone (a)	2.0%	3.1%	41.1%	0.9%	5.9%	1.0%
Asian alone (a)	0.4%	0.4%	0.4%	0.7%	0.7%	4.3%
Native Hawaiian and Other Pacific Islander alone (a)	0.0%	0.1%	0.1%	0.0%	0.1%	0.0%
Two or More Races	2.0%	2.5%	8.0%	2.6%	2.5%	2.6%
Hispanic or Latino (b)	1.7%	1.1%	2.5%	5.7%	1.9%	4.9%
White alone, not Hispanic or Latino	93.6%	92.5%	48.3%	89.4%	87.8%	82.1%

Source: United States Census Bureau, State & County Quickfacts; available at:

<http://www.census.gov/quickfacts/>

Notes – according to U.S. Census Bureau QuickFact definitions:

(a) “Includes persons reporting only one race.”

(b) “The concept of race is separate from the concept of Hispanic origin. Percentages for the various race categories add to 100 percent, and should not be combined with the percent Hispanic” and “Hispanics may be of any race, so also are included in applicable race categories.” This is why categories do not total 100%.

(c) “Z: Value greater than zero but less than half unit of measure shown.”

* The MFRC North Central Landscape splits Beltrami and Polk Counties. These counties could not be split for these population estimates and therefore the ‘North Central Landscape’ summary column does not represent the true population of the region.

Population Projections

Overall, the population of the North Central Landscape is expected to increase by 7.9% between 2015 and 2045 (Table 3). Despite the overall increase, variability in the rate of change exists within the region. Becker, Beltrami, and Mahnomen are projected to increase at a higher rate than the state-wide average of 13.4%, while Aitkin is expected to decline by 13.7% between 2015 and 2045.

Population projections by age group are available through 2045 by county from the Minnesota State Demographic Center (Table 4). Between 2015 and 2045, the 0-24 year-old age group is expected to rise by 13.2% in the North Central Landscape while the 25-64 age group is expected to decline by 3.7%. During this same time period the >65 age group is expected to increase in population by 25.6%.

Table 3: Population projections for Minnesota and counties in the North Central Landscape, 2015-2045.

County	2015	2025	2015-25 % Change	2035	2025-35 % Change	2045	2035- 45 % Change	2015-45 % Change
Aitkin	17,460	17,086	-2.1%	15,809	-7.5%	15,076	-4.6%	-13.7%
Becker	34,893	37,593	7.7%	39,203	4.3%	40,961	4.5%	17.4%
Beltrami	46,103	49,517	7.4%	51,946	4.9%	54,142	4.2%	17.4%
Cass	30,656	31,827	3.8%	31,765	-0.2%	32,599	2.6%	6.3%
Clearwater	9,062	9,383	3.5%	9,507	1.3%	9,555	0.5%	5.4%
Crow Wing	66,818	70,450	5.4%	71,555	1.6%	73,122	2.2%	9.4%
Hubbard	21,980	22,815	3.8%	22,789	-0.1%	23,162	1.6%	5.4%
Itasca	47,344	48,834	3.1%	48,543	-0.6%	47,721	-1.7%	0.8%
Mahnomen	5,647	5,982	5.9%	6,240	4.3%	6,469	3.7%	14.6%
Polk	32,252	33,317	3.3%	34,024	2.1%	34,229	0.6%	6.1%
North Central Landscape*	312,215	326,804	4.7%	331,381	1.4%	337,036	1.7%	7.9%
Minnesota	5,497,933	5,841,619	6.3%	6,093,729	4.3%	6,234,930	2.3%	13.4%

Source: Minnesota State Demographic Center.

Notes – projections are based on 2014 projections from the 2010 U.S. Census Data.

* The MFRC North Central Landscape splits Beltrami and Polk Counties. These counties could not be split for these population estimates and therefore the ‘North Central Landscape’ summary row does not represent the true population of the region.

Table 4. Population projection by age group for counties in the North Central Landscape, 2015-2045.

	Age	2015	2025	2035	2045	% change 2015-45
Aitkin	0-24	4,044	4,069	4,164	4,406	9.0%
	25-64	7,748	6,463	5,725	6,201	-20.0%
	>65	5,668	6,554	5,920	4,469	-21.2%
Becker	0-24	10,966	11,751	12,644	13,893	26.7%
	25-64	16,551	15,762	15,781	17,234	4.1%
	>65	7,376	10,080	10,778	9,834	33.3%
Beltrami	0-24	17,682	18,129	18,476	19,749	11.7%
	25-64	21,172	20,738	21,155	22,497	6.3%
	>65	7,249	10,650	12,315	11,896	64.1%
Cass	0-24	8,690	9,316	10,057	11,109	27.8%
	25-64	14,170	12,637	11,928	13,276	-6.3%
	>65	7,796	9,874	9,780	8,214	5.4%
Clearwater	0-24	2,756	2,717	2,637	2,769	0.5%
	25-64	4,312	4,091	4,060	4,213	-2.3%
	>65	1,994	2,575	2,810	2,573	29.0%
Crow Wing	0-24	20,245	20,941	21,402	22,684	12.0%
	25-64	32,144	30,611	29,948	31,752	-1.2%
	>65	14,429	18,898	20,205	18,686	29.5%
Hubbard	0-24	6,181	6,541	7,003	7,632	23.5%
	25-64	10,328	9,320	8,690	9,502	-8.0%
	>65	5,471	6,954	7,096	6,028	10.2%
Itasca	0-24	13,405	13,503	13,683	14,166	5.7%
	25-64	23,004	20,480	19,335	20,015	-13.0%
	>65	10,935	14,851	15,525	13,540	23.8%
Mahnommen	0-24	2,014	1,932	1,861	2,008	-0.3%
	25-64	2,543	2,605	2,892	3,022	18.8%
	>65	1,090	1,445	1,487	1,439	32.0%
Polk	0-24	10,748	10,713	10,569	11,066	3.0%
	25-64	15,306	14,031	13,514	14,160	-7.5%
	>65	6,198	8,573	9,941	9,003	45.3%
North Central Landscape*	0-24	96,731	99,612	102,496	109,482	13.2%
	25-64	147,278	136,738	133,028	141,872	-3.7%
	>65	68,206	90,454	95,857	85,682	25.6%

Source: Minnesota State Demographic Center.

Notes – projections are based on 2014 projections from the 2010 U.S. Census Data.

* The MFRC North Central Landscape splits Beltrami and Polk Counties. These counties could not be split for these population estimates and therefore the ‘North Central Landscape’ summary row does not represent the true population of the region.



Household Trends and Projections

According to the U.S. Census Bureau, Minnesota currently contains roughly 2.12 million households and 2.40 million housing units (Table 5). In the North Central Landscape, Crow Wing County contains the most households and housing units, and Mahnommen County contains the fewest. Mahnommen County has the largest number of persons per household (2.68) and Aitkin County has the fewest (2.06). Median annual household income is highest in Becker County (\$51,470) (followed closely by Polk County (\$51,025)) and lowest in Mahnommen County (\$39,924). All ten counties in the region have median household incomes below the state median (\$60,828). All counties except Crow Wing are above the state median of persons below poverty level (11.5%) with the highest rates in Mahnommen (19.6%) and Beltrami (18.5%) counties.

Homeownership rate is highest in Aitkin County (82.6%) and lowest in Beltrami County (70.0%); eight of the ten counties in the region have higher homeownership rates than the state average, with Beltrami and Polk Counties being the exceptions. The median value of owner-occupied housing units in all counties in the region is lower than the state-wide average (\$185,200). Crow Wing County has the highest (\$177,400) and Mahnommen County has the lowest median value of owner-occupied housing units (\$97,800).

According to the Minnesota State Demographic Center, household numbers state-wide are projected to rise by 12.1% between 2010 and 2020, and 32.3% between 2010 and 2040 (Table 6). Household projections for the MFRC North Central Landscape are lower, 9.1% and 21.4% respectively. Beltrami County is projected to have a greater increase in households by 2040 (41.3%) than the state as a whole while Clearwater County is projected to decline by 4.1 percent by 2040.

Table 5. Per capita and household earnings, cost, and ownership rate for Minnesota and counties in the North Central Landscape, 2010-2014.

County	Households	Persons per household	Median household income	% below median MN household income	Persons below poverty level, percent
Aitkin	7,637	2.06	\$42,036	-30.9%	14.9%
Becker	13,534	2.40	\$51,470	-15.4%	14.6%
Beltrami	16,793	2.57	\$43,990	-27.7%	18.5%
Cass	12,876	2.19	\$45,567	-25.1%	15.7%
Clearwater	3,539	2.44	\$45,105	-25.8%	17.8%
Crow Wing	26,654	2.33	\$49,186	-19.1%	10.9%
Hubbard	8,740	2.33	\$46,412	-23.7%	12.2%
Itasca	18,821	2.35	\$47,122	-22.5%	14.7%
Mahnomen	2,018	2.68	\$39,924	-34.4%	19.6%
Polk	12,642	2.39	\$51,025	-16.1%	12.7%
Minnesota	2,115,337	2.48	\$60,828	--	11.5%
County	Housing units, 2015	Homeownership rate	Median value of owner-occupied housing units	% below median MN value of owner-occupied housing units	
Aitkin	16,364	82.6%	\$165,400	-10.7%	
Becker	19,236	79.2%	\$173,400	-6.4%	
Beltrami	20,930	70.0%	\$147,200	-20.5%	
Cass	25,391	80.8%	\$172,800	-6.7%	
Clearwater	4,754	79.9%	\$115,000	-37.9%	
Crow Wing	41,147	74.9%	\$177,400	-4.2%	
Hubbard	14,600	81.3%	\$171,300	-7.5%	
Itasca	27,254	80.1%	\$152,000	-17.9%	
Mahnomen	2,763	72.6%	\$97,800	-47.2%	
Polk	14,723	71.6%	\$130,500	-29.5%	
Minnesota	2,397,720	72.1%	\$185,200	--	

Source: United States Census Bureau, State & County Quickfacts; available at:

<http://www.census.gov/quickfacts/>

Notes – according to U.S. Census Bureau QuickFact definitions: "A household includes all the persons who occupy a housing unit as their usual place of residence. A housing unit is a house, an apartment, a mobile home, a group of rooms, or a single room that is occupied (or if vacant, is intended for occupancy) as separate living quarters."

Table 6. Household estimates and projections for Minnesota and counties in the North Central Landscape, 2015-2040.

County	2010 (U.S Census)	2015	2020	2025	2030	2035	2040	% change 2010- 2020	% change 2010- 2040
Aitkin	7,299	7,669	8,011	8,278	8,465	8,578	8,627	9.8%	18.2%
Becker	13,224	13,453	14,022	14,391	14,796	15,130	15,476	6.0%	17.0%
Beltrami	16,846	18,195	19,503	20,727	21,844	22,862	23,797	15.8%	41.3%
Cass	11,948	12,621	13,221	13,692	14,026	14,234	14,334	10.7%	20.0%
Clearwater	3,527	3,589	3,622	3,615	3,568	3,488	3,382	2.7%	-4.1%
Crow Wing	26,033	27,715	29,472	31,013	32,309	33,375	34,237	13.2%	31.5%
Hubbard	8,661	9,258	9,832	10,316	10,698	10,982	11,180	13.5%	29.1%
Itasca	18,773	18,742	19,201	19,375	19,588	19,702	19,825	2.3%	5.6%
Mahnomen	2,019	2,033	2,042	2,056	2,057	2,056	2,051	1.1%	1.6%
Polk	12,704	12,891	13,174	13,422	13,633	13,823	14,010	3.7%	10.3%
North Central Landscape*	121,034	126,166	132,100	136,885	140,984	144,230	146,919	9.1%	21.4%
Minnesota	2,087,227	2,216,515	2,339,934	2,454,854	2,562,091	2,662,944	2,760,924	12.1%	32.3%

Source: Minnesota State Demographic Center.

* The MFRC North Central Landscape splits Beltrami and Polk Counties. These counties could not be split for these population estimates and therefore the ‘North Central Landscape’ summary row does not represent the true population of the region



Employment Trends and Projections

The U.S. Bureau of Economic Analysis defines employment as employment covered by Social Security. All employment and earnings data are reported for industries classified by North American Industry Classification System (NAICS) codes. The NAICS was developed and is revised periodically in an effort to enhance the comparability of industry employment and wage statistics across Mexico, Canada, and the United States, and reflect economic activities within industries more accurately. It is also important to note that these data are reported by place of work rather than by employee's place of residence (as it is with U.S. Census data).

These codes are used to provide a detailed accounting of employment and earnings by industry at the county, state, and national level. This data is based off social security data and tend to emphasize some industries more than others such as manufacturing compared to service industry data. Tourism is captured indirectly through codes for eating and drinking places, hotels and lodging places, and automobile dealers and service stations under the service industry category.

Data disclosure laws are a problem frequently found in county-level data. These laws prevent the release of data that would make it possible to identify a specific business within a geographic area. Lack of disclosure results in incomplete or absent data for some industry categories. Proprietary employment is not reflected in employment numbers.

According to the Bureau of Labor Statistics, Minnesota has enjoyed a modest overall growth in employment numbers over the last 10 years (2006-2015), despite a dip in numbers after the Great Recession (Table 7). However, five of the ten counties in the MFRC North Central Landscape have experienced overall negative employment growth since 2006 (Aitkin, Crow Wing, Hubbard, Mahnommen, and Polk) and three counties experienced growth rates higher than Minnesota as a whole (Becker, Beltrami, and Clearwater).

Retail Trade, Health Care and Social Assistance, Accommodation and Food Services, and Manufacturing are the largest employment sectors in most of the North Central Minnesota counties, and account for 47.4% of all reported jobs in the region (Table 8). Wood Products Manufacturing was a reported industry in four of the ten counties accounting for 727 jobs in the North Central region. Agriculture, Forestry, Fishing and Hunting was a reported industry in four of the counties and accounts for 1,338 jobs. Many of these jobs in the western portion of the region are likely agriculture jobs (Polk county had 599), however there are more agriculture and farm jobs that are proprietary and therefore do not appear in this analysis.

The unemployment rate in the North Central Landscape was 5.5% in 2015, a substantial decrease from the 9.4% level it reached in 2009 following the Great Recession and equal to the pre-Recession rate in 2006 (Table 9). The unemployment rate in this region has generally been higher than the state and national average, but since the 2008 recession it has either been lower or very near to the national average. (Figure 3). No counties in the MFRC North Central Landscape had an unemployment rate below the state average in 2015. The unemployment rate in Clearwater County has been consistently higher than the other counties in the region (9.2% in 2015).

Table 7. Mean annual employment numbers for Minnesota and counties in the North Central Landscape, 2006-2015; all industries, ownerships, and establishment sizes.

Year	Aitkin	Becker	Beltrami	Cass	Clearwater	Crow Wing
2006	4,271	13,067	17,861	9,633	2,299	28,905
2007	4,236	13,112	17,880	9,631	2,386	29,055
2008	4,150	12,883	17,733	9,549	2,513	28,466
2009	3,887	12,601	17,335	9,668	2,439	26,987
2010	3,788	12,839	17,305	9,688	2,464	27,028
2011	3,714	13,154	17,315	9,649	2,524	27,094
2012	3,669	13,529	17,918	9,581	2,437	26,985
2013	3,682	13,750	18,237	9,771	2,555	27,623
2014	3,732	13,857	18,771	9,957	2,608	28,238
2015	3,758	14,201	18,977	9,934	2,706	28,544
% change 2006-2015	-12.0%	8.7%	6.2%	3.1%	17.7%	-1.2%
Year	Hubbard	Itasca	Mahnomen	Polk	North Central Landscape*	Minnesota
2006	6,383	16,009	2,079	12,522	113,029	2,670,222
2007	6,027	15,813	1,998	12,422	112,560	2,687,482
2008	6,213	15,678	1,983	12,442	111,610	2,679,527
2009	5,788	15,306	1,912	12,329	108,252	2,569,651
2010	5,651	15,515	1,917	12,160	108,355	2,558,310
2011	5,561	15,892	1,939	11,848	108,690	2,602,988
2012	5,719	15,962	1,959	12,168	109,927	2,644,408
2013	5,752	15,658	1,961	12,145	111,134	2,691,832
2014	5,763	15,971	1,913	12,235	113,045	2,730,301
2015	5,827	16,375	1,928	12,287	114,537	2,776,464
% change 2006-2015	-8.7%	2.3%	-7.3%	-1.9%	1.3%	4.0%

Source: United States Bureau of Labor Statistics, Quarterly Census of Employment and Wages, State and County Wages Database; available at: <http://www.bls.gov/cew/data.htm>

* The MFRC North Central Landscape boundary splits Beltrami and Polk Counties. These counties could not be split for these estimates.

Table 8. Number of employees by employment sector in the ten North Central Landscape counties, 2015.

Industry	Aitkin		Becker		Beltrami		Cass		Clearwater	
	#	% ^a	#	% ^a	#	% ^a	#	% ^a	#	% ^a
Total, All Industries ^b	3,759	--	14,215	--	18,973	--	9,938	--	2,702	--
Agriculture, Forestry, Fishing and Hunting			387	2.7%			71	0.7%	75	2.8%
Mining			51	0.4%						
Construction	190	5.1%	791	5.6%	1,222	6.4%	418	4.2%	297	11.0%
Manufacturing	326	8.7%	2,108	14.8%	1,066	5.6%	640	6.4%	449	16.6%
• Wood Prod. Man. ^c					188	1.0%	164	1.7%		
Utilities					128	0.7%				
Wholesale Trade	120	3.2%			439	2.3%	71	0.7%		
Retail Trade	579	15.4%	2,109	14.8%	2,841	15.0%	1,029	10.4%	239	8.8%
Transportation and Warehousing			701	4.9%	634	3.3%			169	6.3%
Information	39	1.0%	120	0.8%	378	2.0%	103	1.0%		
Finance and Insurance	97	2.6%	288	2.0%	402	2.1%	188	1.9%		
Real Estate and Rental and Leasing	14	0.4%	107	0.8%	83	0.4%	259	2.6%		
-Professional, Scientific, and Technical Services			195	1.4%	384	2.0%	149	1.5%		
Management of Companies and Enterprises										
Administrative and Support and Waste Management and Remediation Services	77	2.0%	305	2.1%	524	2.8%				
Educational Services					2,232	11.8%				
Health Care and Social Assistance					3,766	19.8%				
Arts, Entertainment, and Recreation	51	1.4%	336	2.4%	531	2.8%	740	7.4%		
Accommodation and Food Services	463	12.3%	1,328	9.3%	1,926	10.2%	1,862	18.7%		
Other Services (except Public Administration)	139	3.7%	471	3.3%	471	2.5%	199	2.0%	67	2.5%
Public Administration	310	8.2%	1,497	10.5%	1,812	9.6%	1,815	18.3%	204	7.5%

Table 8. Continued

Industry	Crow Wing		Hubbard		Itasca		Mahnommen		Polk	
	#	% ^a	#	% ^a	#	% ^a	#	% ^a	#	% ^a
Total, All Industries ^b	28,548	--	5,826	--	16,386	--	1,928	--	12,288	--
Agriculture, Forestry, Fishing and Hunting					206	1.3%			599	4.9%
Mining										
Construction	1,740	6.1%	336	5.8%	1,180	7.2%	44	2.3%	450	3.7%
Manufacturing	2,459	8.6%	790	13.6%	999	6.1%			1,711	13.9%
• Wood Prod. Man. ^c	235	0.8%			140	0.9%				
Utilities	132	0.5%			422	2.6%			34	0.3%
Wholesale Trade	563	2.0%			313	1.9%			574	4.7%
Retail Trade	4,606	16.1%	944	16.2%	2,201	13.4%	107	5.5%	1,319	10.7%
Transportation and Warehousing	643	2.3%	153	2.6%	368	2.2%			436	3.5%
Information	553	1.9%	65	1.1%	142	0.9%			215	1.7%
Finance and Insurance	1,225	4.3%	156	2.7%	388	2.4%			248	2.0%
Real Estate and Rental and Leasing	316	1.1%	35	0.6%	70	0.4%			45	0.4%
Professional, Scientific, and Technical Services	838	2.9%	105	1.8%	232	1.4%			204	1.7%
Management of Companies and Enterprises	86	0.3%								
Administrative and Support and Waste Management and Remediation Services	1,202	4.2%	83	1.4%	752	4.6%				
Educational Services	2,104	7.4%			1,375	8.4%			1,400	11.4%
Health Care and Social Assistance	5,737	20.1%			3,325	20.3%			2,420	19.7%
Arts, Entertainment, and Recreation	282	1.0%			303	1.8%			85	0.7%
Accommodation and Food Services	3,767	13.2%	676	11.6%	1,412	8.6%			1,044	8.5%
Other Services (except Public Administration)	894	3.1%	189	3.2%	631	3.9%			448	3.6%
Public Administration	1,299	4.6%	475	8.2%	1,308	8.0%	135	7.0%	895	7.3%

Source: Minnesota Department of Employment and Economic Development (MN DEED).

^a Percent of total does not sum to 100 because data was not available for some sectors to avoid disclosure of confidential information; estimates for these items are included in the totals.

^b Proprietary employment is not reflected in the total sum of all industries.

^c Wood Product Manufacturing is a sub-sector of Manufacturing and therefore the jobs indicated under this heading are also accounted for in the Manufacturing Sector.

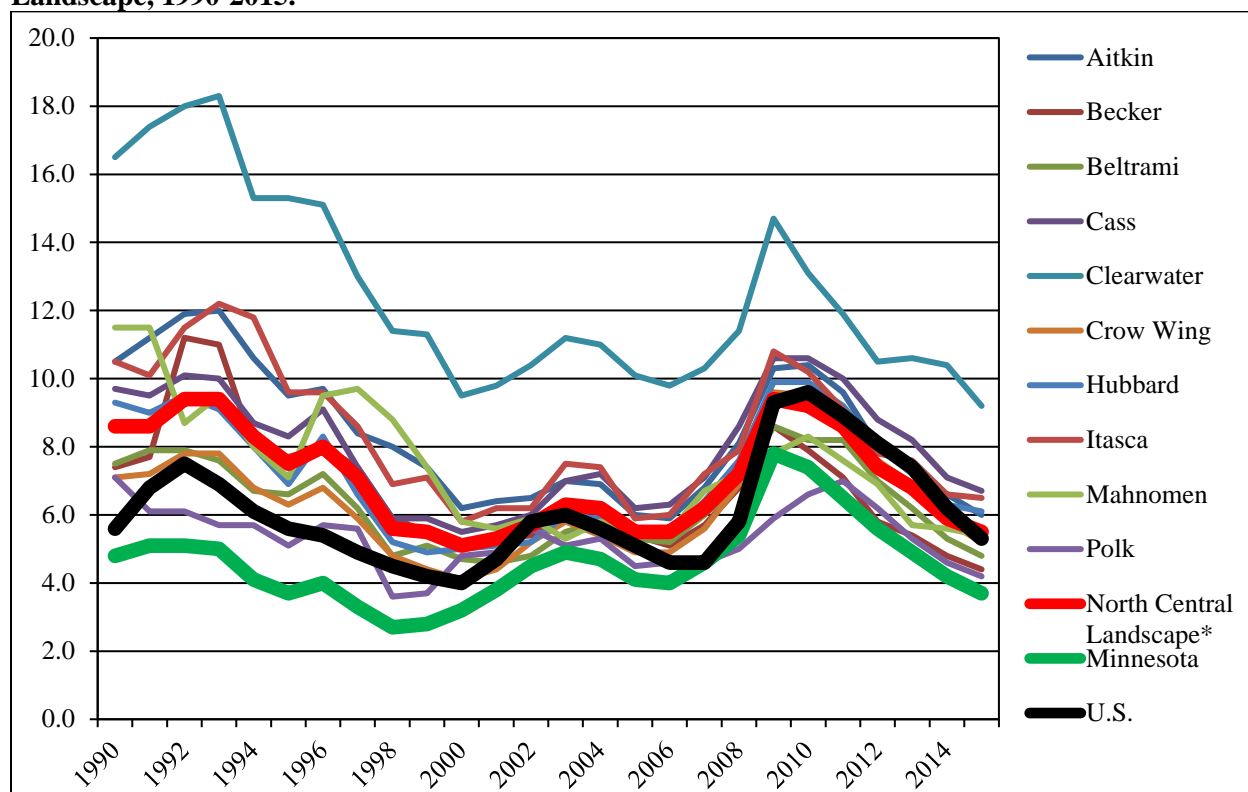
Table 9. Percent unemployed for the U.S., Minnesota, and counties in the North Central Landscape, 1990-2015.

	1990	1995	2000	2005	2010	2015
Aitkin	10.5	9.5	6.2	6.0	10.4	6.0
Becker	7.4	7.7	5.0	5.4	7.9	4.4
Beltrami	7.5	6.6	4.7	5.3	8.2	4.8
Cass	9.7	8.3	5.5	6.2	10.6	6.7
Clearwater	16.5	15.3	9.5	10.1	13.1	9.2
Crow Wing	7.1	6.3	4.1	4.9	9.5	5.2
Hubbard	9.3	6.9	5.0	5.4	9.9	6.1
Itasca	10.5	9.6	5.8	5.9	10.2	6.5
Mahnomen	11.5	7.1	5.8	5.5	8.3	5.4
Polk	7.1	5.1	4.8	4.5	6.6	4.2
North Central Landscape*	8.6	7.5	5.1	5.5	9.2	5.5
Minnesota	4.8	3.7	3.2	4.1	7.4	3.7
U.S.	5.6	5.6	4.0	5.1	9.6	5.3

Source: Minnesota Department of Employment and Economic Development.

* The MFRC North Central Landscape boundary splits Beltrami and Polk Counties. These counties could not be split for these estimates.

Figure 3. Percent unemployed for the U.S., Minnesota, and counties in the North Central Landscape, 1990-2015.



Source: Minnesota Department of Employment and Economic Development.

* The MFRC North Central Landscape boundary splits Beltrami and Polk Counties. These counties could not be split for these estimates.



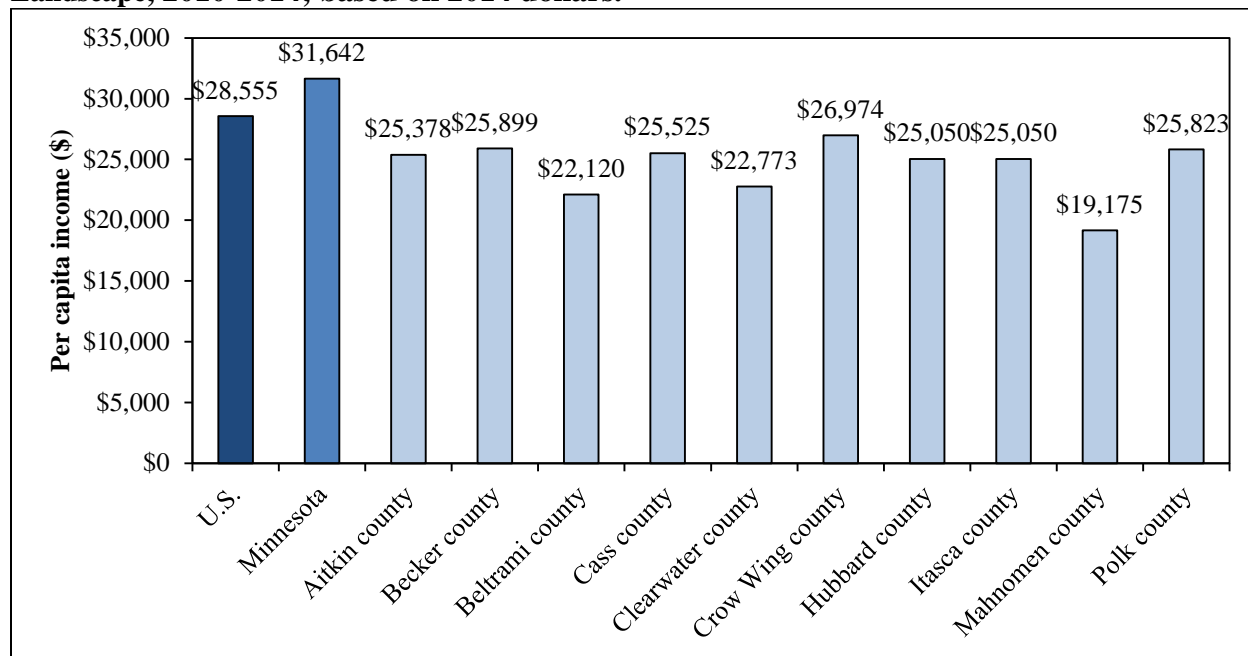
Earnings and Income Trends

According to the U.S. Census Bureau, the average per capita annual income for the state of Minnesota is \$31,642, which exceeds the average per capita income of every county in the MFRC North Central Landscape (Figure 4). The highest-income county in the region is Crow Wing County (\$26,974) and the lowest-income county is Mahnomen (\$19,175).

In terms of wages, Crow Wing County workers earned over \$300,000,000 in total wages more than the next highest-earning county in 2015. Itasca and Clearwater County workers received the highest per worker wage (>\$40,000) by over \$2,000 over the next highest county in the region. (Table 10). The regional average wage is more than \$16,000 less than the state and national average. Weekly wage is also much lower in the North Central Landscape than the state and national averages (Figure 5).

Minnesota's poverty level is below the national average, at 11.5% state-wide versus 14.8% nationwide (Figure 6). All counties except Crow Wing are above the state-wide levels of persons below poverty level with the highest rates in Mahnomen (19.6%) and Beltrami (18.5%) counties. Overall, the northeastern and north central parts of the state have some of the highest concentrations of poverty (Figure 7).

Figure 4. Per capita annual income for the U.S., Minnesota, and counties in the North Central Landscape, 2010-2014; based on 2014 dollars.



Source: United States Census Bureau, State & County Quickfacts; available at: <http://www.census.gov/quickfacts/>

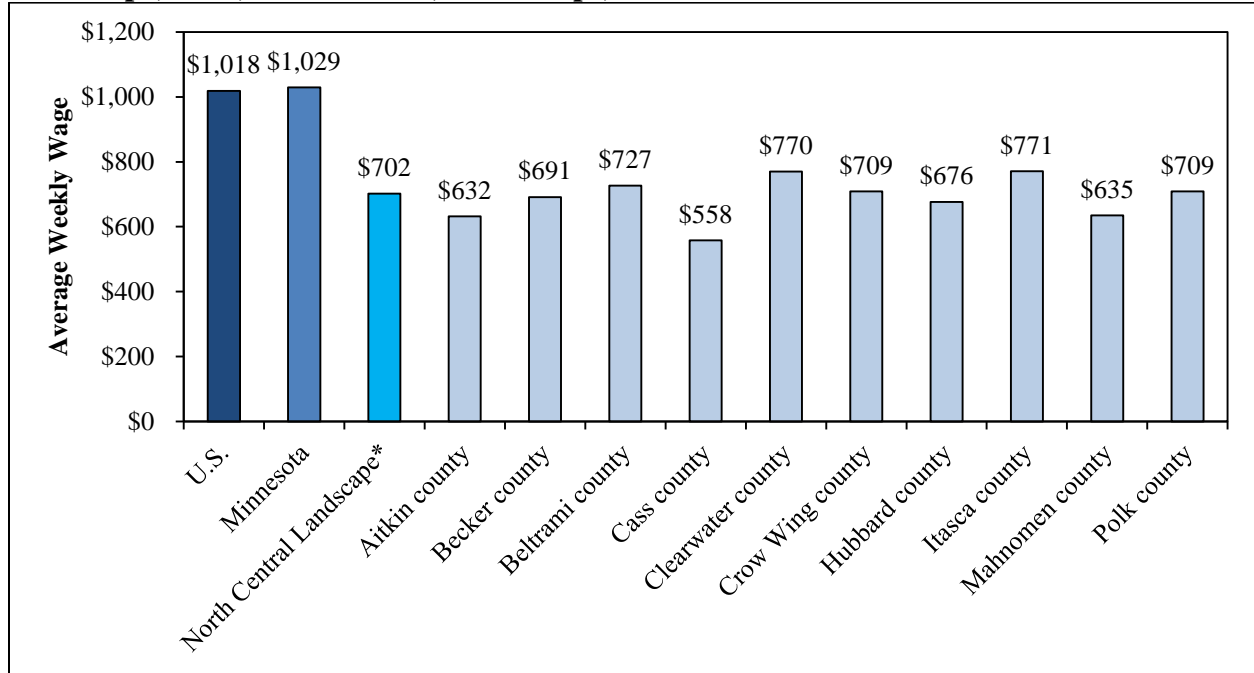
Table 10. Annual establishments, employment, and wages for the U.S., Minnesota, and counties in the North Central Landscape, 2015; all industries, ownerships, and establishment sizes.

County	Annual Establishments	Annual Average Employment	Total Annual Wages	Annual Average Weekly Wage	Annual Wages per Employee
Aitkin	425	3,758	\$123,566,416	\$632	\$32,883
Becker	1,019	14,201	\$509,894,973	\$691	\$35,906
Beltrami	1,166	18,977	\$717,358,764	\$727	\$37,801
Cass	817	9,934	\$288,337,225	\$558	\$29,027
Clearwater	213	2,706	\$108,316,168	\$770	\$40,029
Crow Wing	2,031	28,544	\$1,052,815,199	\$709	\$36,884
Hubbard	581	5,827	\$204,898,244	\$676	\$35,163
Itasca	1,149	16,375	\$656,811,118	\$771	\$40,111
Mahnommen	115	1,928	\$63,639,302	\$635	\$33,005
Polk	950	12,287	\$452,880,914	\$709	\$36,860
North Central Landscape*	8,466	114,537	\$4,178,518,323	\$702	\$36,482
Minnesota	161,101	2,776,464	\$148,592,971,938	\$1,029	\$53,519
U.S.	9,550,794	139,488,190	\$7,384,083,154,767	\$1,018	\$52,937

Source: United States Bureau of Labor Statistics, Quarterly Census of Employment and Wages, State and County Wages Database; available at: <http://www.bls.gov/cew/>

* The MFRC North Central Landscape boundary splits Beltrami and Polk Counties. These counties could not be split for these estimates.

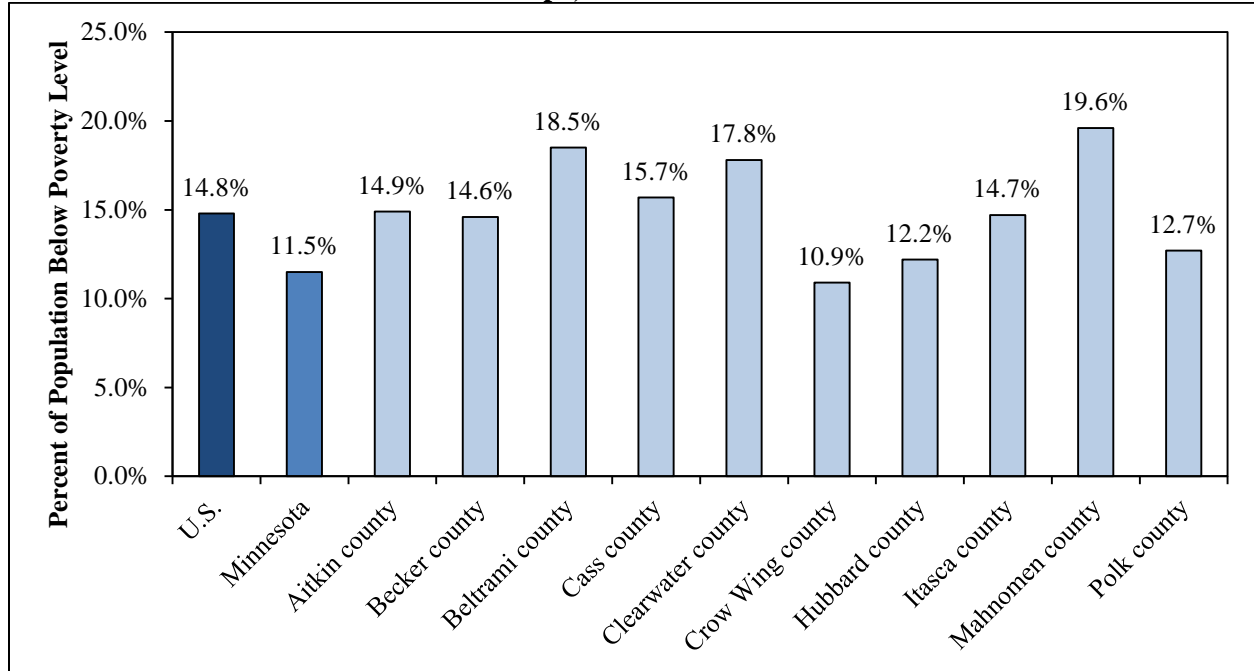
Figure 5. Average weekly wage for the U.S., Minnesota, and counties in the North Central Landscape, 2015; all industries, ownerships, and establishment sizes.



Source: United States Bureau of Labor Statistics, Quarterly Census of Employment and Wages, State and County Wages Database; available at: <http://www.bls.gov/cew/>

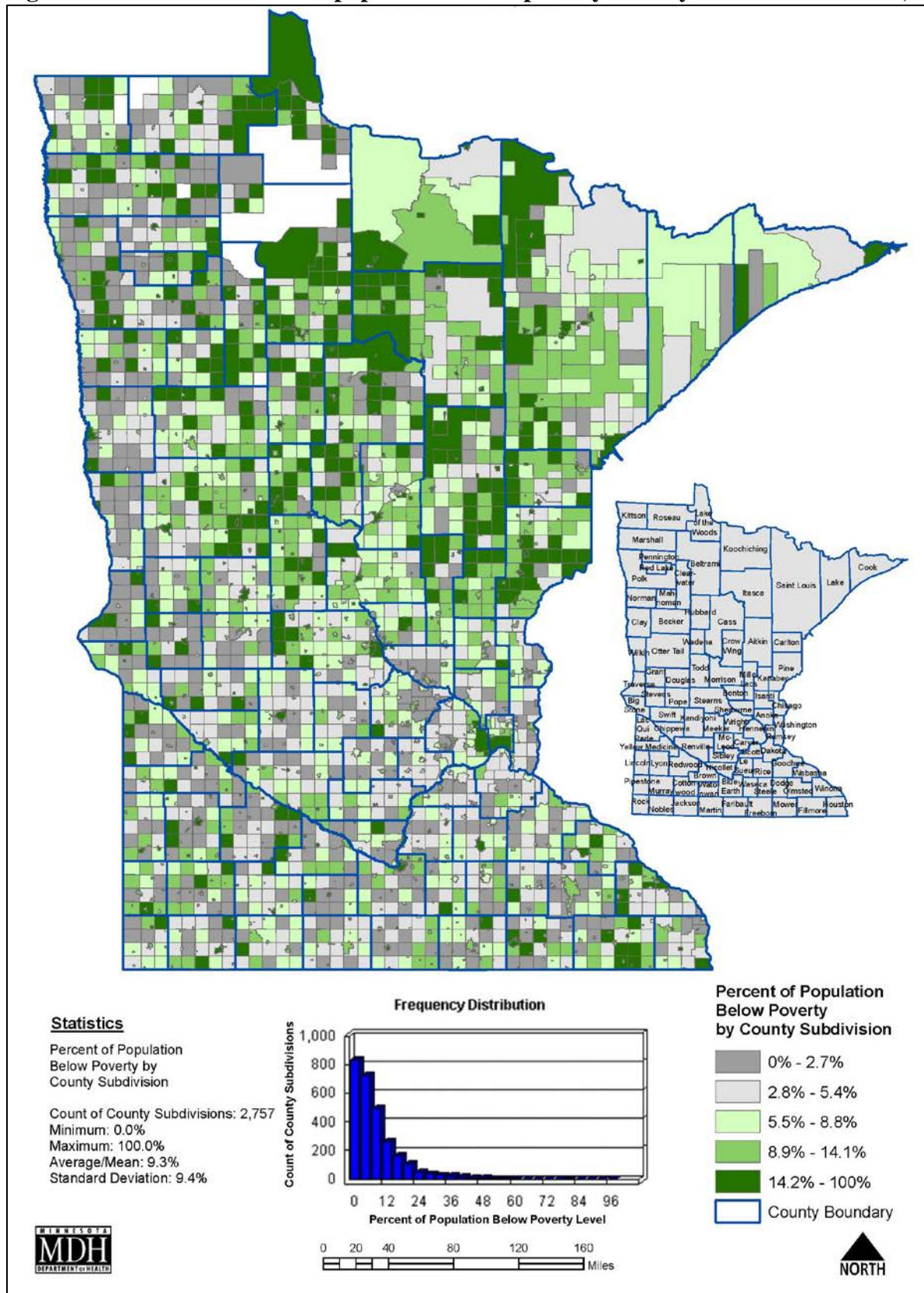
* The MFRC North Central Landscape boundary splits Beltrami and Polk Counties. These counties could not be split for these estimates.

Figure 6. Percent of population with incomes below the poverty level for the U.S., Minnesota, and counties in the North Central Landscape, 2010-2014.



Source: United States Census Bureau, State & County Quickfacts; available at: <http://www.census.gov/quickfacts/>

Figure 7. Percent of state-wide population below poverty level by minor civil division, 2010.



Source: 2010 American Community Survey 5-year Estimates, Minnesota Department of Health.