

Community Supervision Advisory Committee (CSAC)

Molly Bruner, Scott County Director & Kelly Mitchell, DOC Assistant Commissioner
9/25/2025

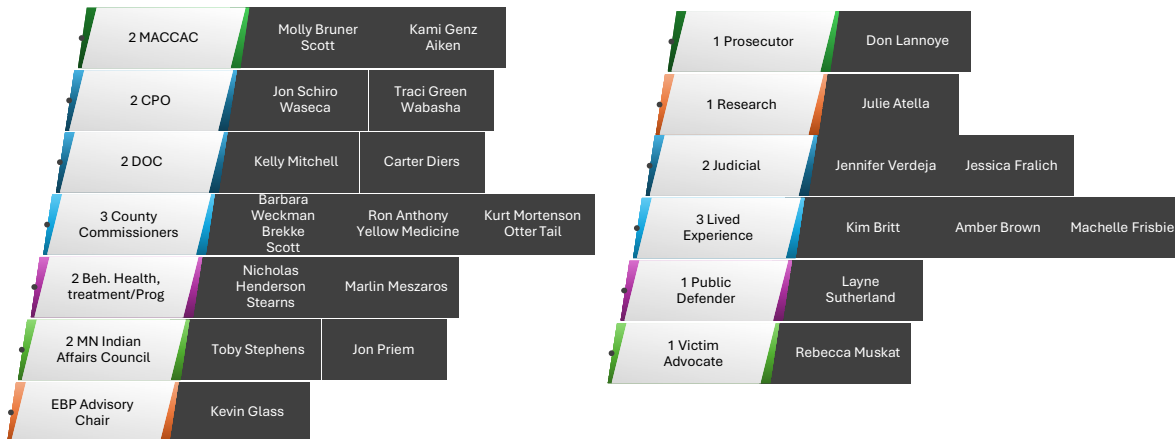
1

Background

- **In 2021 The Council of State Government (CSG) assessed all three delivery systems and developed a series of recommendations to better align services for supervision in Minnesota.**
- **401.17 COMMUNITY SUPERVISION ADVISORY COMMITTEE.**

2

CSAC Membership



3

11 Deliverables

1. Statewide Supervision Standards
2. Risk and Needs Assessment Tools
3. Case Planning
4. Limiting Conditions of Supervision
5. Gender-Responsive, Culturally Appropriate & Trauma-Informed
6. Behavior Response Grid

4

11 Deliverables

7. Performance Indicators for Supervision

8. Training/Coaching/QA

9. Evaluate outcomes for grant participants

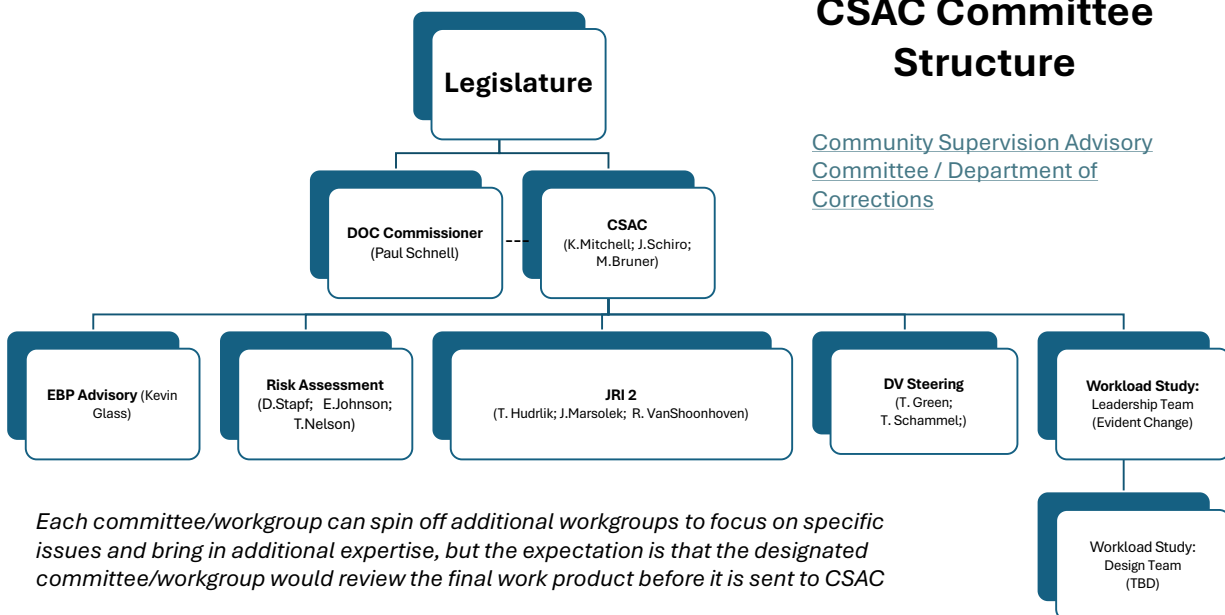
10. Plan to eliminate financial penalties for early discharge

11. Workload Study

5

CSAC Committee Structure

[Community Supervision Advisory Committee / Department of Corrections](#)

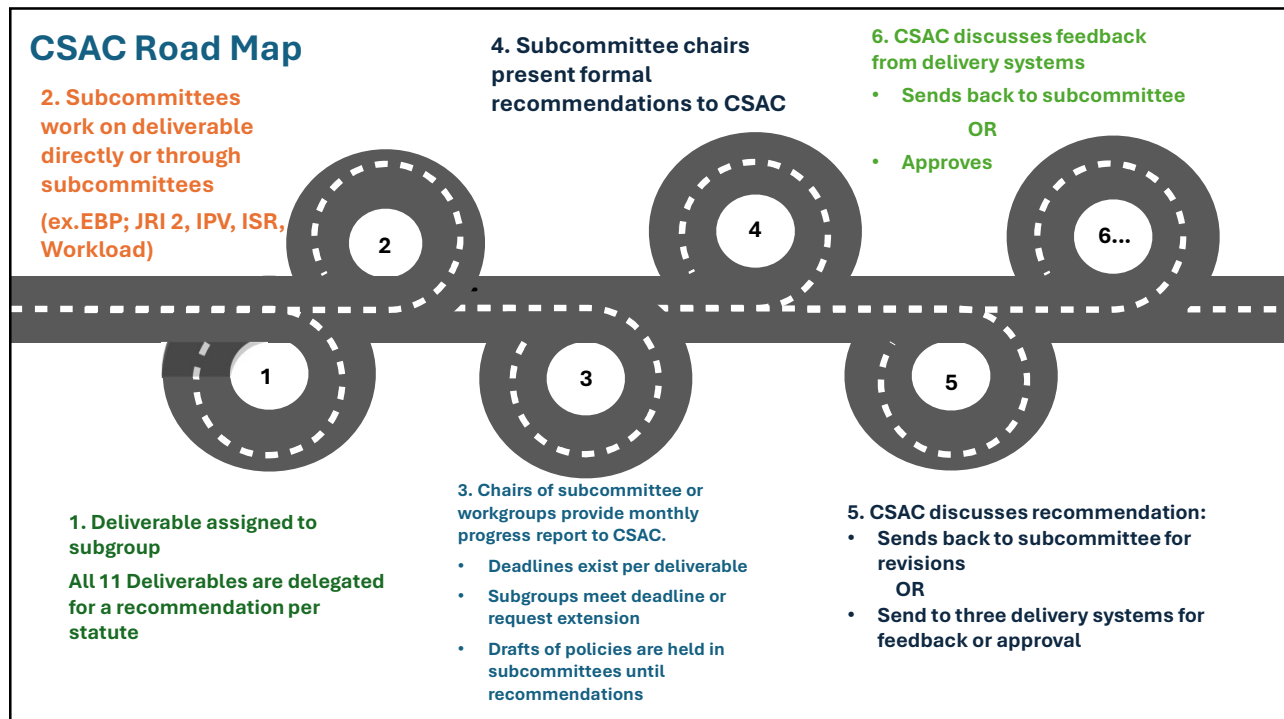


6

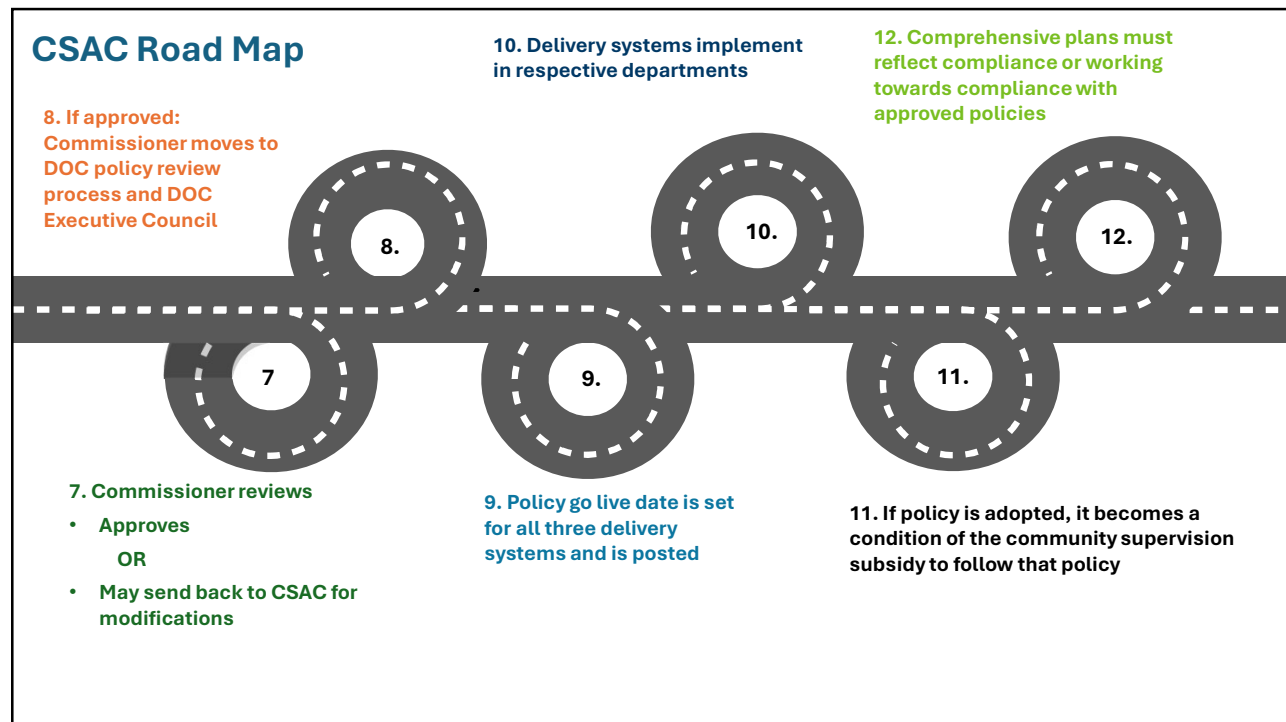
Current Deliverables Assignments

Deliverable	Committee/Workgroup
1 – Supervision Standards	JRI 2; IPV; ISR
2 – Risk Assessment Tools Incl Prescreener	Risk Assessment
3 – Case Planning	JRI 2
5 – Gender/Culture Responsive, Trauma Informed	EBP Advisory Committee
6 – Behavioral Response Grid	JRI 2
8 – Training and QA	EBP Advisory
10 – Eliminate Financial Penalty for Early Discharge	Workload Study
11 – Workload Study	Workload Study

7



8



9

#1

Statewide Supervision Standards

Supervision standards identified so far:

- ISR Supervision (approved and posted)
- Risk Assessment (in progress)
- Case Planning (in progress)
- Cases involving IPV (in progress)

JRI 2 is working on outlining and prioritizing development of a full set of supervision standards

- Using APPA recommendations as a starting point

10

#2 Risk and Needs Assessment Tools

LS/CMI will be used statewide as the primary risk and needs tool

LS/CMI validation study is underway – University of Nebraska Omaha

Screeners will be developed collaboratively with 3 delivery systems modeled after the Oregon pre-screener

Risk assessment policy in development

11

#3 Case Planning

#6 Behavior Response Grid

Case planning policy in development

Behavior response grid concept will be incorporated into the case planning policy

Case planning module in the prioritization queue for further development

12

#5 Gender- Responsive, Culturally Appropriate & Trauma- Informed

- Gender-responsive, culturally appropriate, trauma-informed service's
- CSAC is expected to formally review the first draft of the policy in November
- Recommendations from sub-committee surrounding:
 - 1) Ethics and boundaries training
 - 2) Focused responsivity training
 - 3) Integrated more comprehensive skill practice with EBP
 - 4) Enhancing hiring practices
 - 5) Community engagement

13

#7 Performance Indicators for Supervision

Statewide group working on metrics, definitions and data standards:

- Number of individuals sentenced to supervision each year;
- Offense levels, offense types, and assessed risk levels for which individuals are sentenced to supervision;
- Violation and revocation rates and the identified grounds for the violations and revocations
- Individuals granted early discharge from probation;
- Individuals restructured on supervision, including imposition of new conditions of release

14

#8 Training/ Coaching/QA

- Training, Coaching and Quality Assurance Policy Approved
- Initial base-level training within first year:
 - 1) Motivational Interviewing I & II
 - 2) Core Correctional Practices
 - 3) Validated Risk Assessments
 - 4) Cognitive Behavioral Interventions
 - 5) Case Planning
- Minimum 16 hours, annually, of on-going EBP training
- Provide Integrated EBP coaching on the five base-level trainings
- Establish quality assurance measures on use of EBP skills, principles, training and coaching

15

#10
Plan to eliminate
financial penalties
for early discharge

#11
Workload Study

Workload study underway with the following goals:

1. Understand and quantify the tasks and time needed for community supervision
2. Quantify the administrative costs for providing supervision
3. Provide recommendations for updating the capitated rate in a way that is equitable across delivery systems and promotes the use of evidence-based practices

Early discharge will be examined in the context of the workload study

16

Questions?



17

- Thank you!



18