

# Beltrami County Comprehensive Plan

February 29, 2024

# Contents

Introduction .....	1
Administration and Organization of Correctional Services.....	2
District Organization Chart .....	2
Advisory Board .....	3
DOC Training Requirements: .....	4
Overview of Supervision Population Please see Appendix C.....	4
Strategic Planning at the State Level .....	4
Use of Evidenced Based Practices with fidelity: (Normative Feedback).....	4
Council of State Governments (CSG)- Justice Reinvestment Initiative .....	4
Strategic Planning at the Local Level .....	5
Pre-Trial, Diversion and Other Services .....	6
Narrative of Core Interventions and Evidence-based Practices (EBP).....	7
Victim Concerns .....	11
Correctional Fees .....	11
Contracted Services and Proposal and Proposals for New Services.....	11
Budget.....	12
Salary Roster .....	13
Highlights .....	13
Appendix A Training Requirements .....	15
Appendix B Pre-Trial-Standards .....	16
Appendix C Overview of Supervision Population .....	19

## Introduction

This is a 4-year comprehensive plan for Beltrami County and sets forth specific plans and strategies to provide evidence based correctional services to Beltrami County over the course of the next 4 years. Included will be information about the Minnesota Department of Corrections-Field Services Division (DOC), Beltrami County, and strategies as to how both juvenile and adult correctional services, will be provided within Beltrami County by the MN DOC. Currently, the MN DOC provides all correctional services within Beltrami County.

Beltrami County is located in northwestern MN with a 2020 census population of 46,228. Beltrami County has a total area of 3,056 square miles of which 551 square miles is water. It is the 4<sup>th</sup> largest county by area in Minnesota. Within the Beltrami County boundaries lies the Red Lake Nation Reservation, which is a closed reservation and a sovereign nation. Minnesota court and law enforcement jurisdiction does not extend to the reservation area. A portion of the Leech Lake Nation Reservation is also in Beltrami County. According to the 2020 Census, Beltrami County’s racial population is as follows:

Race and Hispanic Origin	Beltrami
White alone, percent	72.50%
Black or African American alone, percent(a)	0.90%
American Indian and Alaska Native alone, percent(a)	22.00%
Asian alone, percent(a)	0.80%
Native Hawaiian and Other Pacific Islander alone, percent(a)	0.10%
Two or More Races, percent	3.60%
Hispanic or Latino, percent(b)	2.70%
White alone, not Hispanic or Latino, percent	71.30%

### Poverty Statistics (US Census Bureau - 2022)

	Beltrami County	State of Minnesota	United States
Median Household Income	62,173	84,313	75,149
Rate of Persons in Poverty	17.3	9.6	11.5

\*The prevalence of poverty in Minnesota differs between race and ethnicity groups. The most recent 5-year estimate for Minnesota indicates that just under one in three people that identify as American Indian or Alaska Native (31%) or as Black or African American (29%) are in poverty, significantly higher than poverty among the other racial/ethnic groups. ([People in Poverty in Minnesota: MNData Access - MN Dept. of Health - MN Data \(state.mn.us\)](#))

In 2021, Beltrami County had the 2<sup>nd</sup> highest poverty rate in Minnesota with a poverty rate of 16.8%. Mahnomon County had the highest rate at 21.1%.

Geography	
Population per square mile, 2020	18.5
Land area in square miles, 2020	2,504.70

# Administration and Organization of Correctional Services

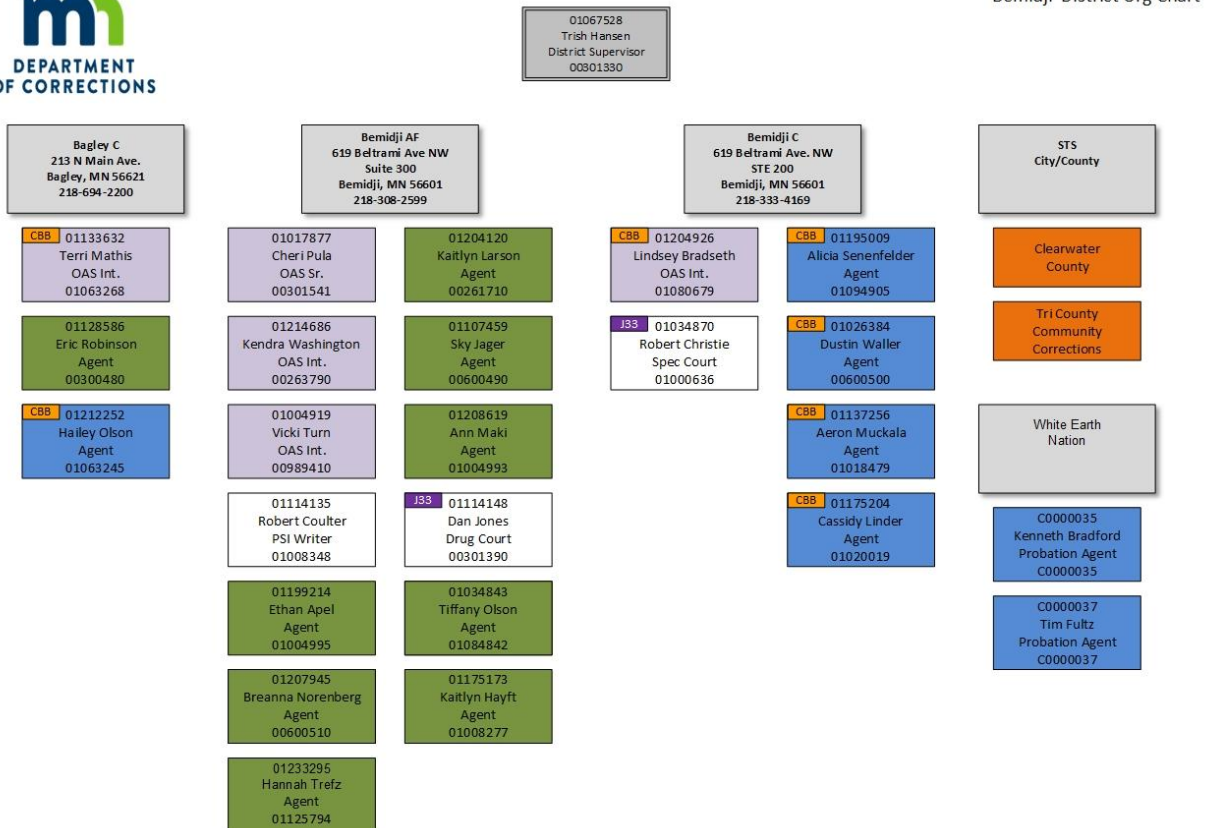
## DOC Vision

Achieving justice through promotion of racial equity, restoration from harm, and community connectedness

## DOC Mission

Transforming lives for a safer Minnesota

## District Organization Chart



The Minnesota Department of Corrections (DOC) provides felony and supervised release supervision in 51 of the 87 Minnesota counties, and in 30 of those counties, the DOC also provides juvenile, and misdemeanor sentenced supervision. On any given day there are approximately 20,000 persons under probation and supervised release supervision. In addition, the DOC provides Intensive Supervised Release (ISR) supervision in 75 of the 87 counties for those persons that are released from prison with the highest level of risk for repeat sexual and violent offenses. The DOC also provides supervision in 82 of our 87 counties for those persons released from prison early to serve their time in the community after participating in the DOC Challenge Incarceration Program (CIP). Lastly, the DOC operates 21 Sentence to Service (STS) crews across the state.

In Beltrami County, DOC provides all correctional supervision in the community to include felony, gross misdemeanor, misdemeanor, and juvenile probation supervision as well as supervised release, intensive

supervised release (ISR) and supervision for those released from the Challenge Incarceration Program (CIP). Beltrami County does not currently have a Sentence to Service (STS) program.

The Beltrami County Contract Probation Office is responsible for supervision and case management for adults placed on misdemeanor and gross misdemeanor supervision by the Court who reside within Beltrami County as well as all juveniles who reside within Beltrami County and are placed under supervision by the Court. The Beltrami County Contract Probation Office is also responsible to provide Pre-Sentence (adults) and pre-Dispositional (juvenile) reports as well as Pre-Trial Bail Evaluations per statutory requirements.

The Beltrami County Contract Probation Office operates through a contract between the MN Department of Corrections and Beltrami County. This office is staffed and supervised by the Minnesota Department of Corrections. The District Supervisor administers the Beltrami County department budget line item number 01-270 (Probation & Parole). It should be noted that in May 2023, the legislature passed a new funding formula allowing for state reimbursement to counties based on the number of clients supervised with a capitated rate per client supervised. It should be noted that currently, there are 4 agents and 1 support staff paid through county funds to support this work.

The Beltrami County Felony Office is responsible for supervision and case management for adults placed on felony supervision by the Court as well as all individuals who are released from adult correctional facilities on supervised release (parole) who reside in Beltrami County. The Beltrami County Felony Office is also responsible to provide Pre-Sentence Investigation reports to the Court as well as Pre-Trial Bail Evaluations per statutory requirements. The Beltrami County Felony Office is staffed and supervised by DOC with the associated costs for running this office paid for by the State of Minnesota through the same funding mechanism as the Beltrami County Contract Office. There are currently 9 agents and 3 support staff funded by the state to support this work.

In addition to the above, DOC receives grant funding for 2 additional agent positions covering Beltrami County. One of the positions is dedicated to the Beltrami County Drug Court and the other to the Beltrami County DWI Court.

## Advisory Board

In January 2024, a local corrections board was established with local stakeholders for the sole purpose to review and provide feedback/input into the 4 yr strategic plan outlined in this document. The board currently comprises the following membership:

Judge John G. Melbye

Judge Jeanine Brand

Public Defender, Jenn Nelson

County Administrator Tom Barry

Court Administrator, Krista Smith

Health and Human Services Director, Anne Lindseth

Health and Human Services Division Director, Jeff Lind

Red Lake Public Safety Director, Daniel Kingbird

Project Director of Red Lake Chemical Health, Salena Beasley

NW MN Juvenile Center Superintendent, Mindy O'Brien

Judge Annie Claesson-Huseby

County Attorney David Hanson

Bemidji City Attorney, Katie Nolting

County Commissioner, John Carlson

Sheriff, Jason Riggs

Bemidji Chief of Police, Mike Mastin

Jail Administrator, Calendar Allen

DOC ISR Supervisor, Cody Underdahl

DOC District Supervisor, Trish Hansen

## DOC Training Requirements:

Agents new to the DOC participate in a Statewide Training (STA) Academy. STA is spread out over three months, is hybrid in nature (courses in person & virtual platform) and consists of over 140 hours of instruction on evidence best practices (EBP) and how to effectively work with persons under supervision to assess and reduce their probability for future criminality, agent safety, as well as other general knowledge courses. Agents are required to complete 40 hours of training each year; 20 of which are to be EBP related. STS crew leaders are required to complete 40 hours of training, which includes an annual two-day Advanced Crew Leader training at Camp Ripley with instruction on chainsaws, tree felling, small engine repair, safety, and best approaches to working with clients and stakeholders. Support staff are required to complete 16 hours of training relevant to their position. See the FY 24 required training for Field Services in Appendix A.

## Overview of Supervision Population

Please see Appendix C

## Strategic Planning at the State Level

Each county may have goals addressing specific needs in their community. As an agency, Field Services' main approach to transforming lives is targeting the drivers of criminality and providing interventions to address those needs to lower that person's level of risk for criminality. As with most agencies, it is not just knowing what those strategies are, but who to prioritize for resources and how to effectively implement those strategies with high fidelity within an organization that leads to greater success.

### Use of Evidenced Based Practices with fidelity: (Normative Feedback)

All DOC Supervisors attended the Alliance for Community and Justice Innovation (ACJI's) Implementation Leadership Academy on best approaches to implementation and sustaining culture change and will continue with coaching from ACJI. For all DOC counties, one of the main objectives is to continue to ensure that staff are using evidence-based best practices with fidelity. In fiscal year 2024, all DOC counties will be ensuring that staff review the risk assessment results with the person being assessed (Normative Feedback). This helps the person under supervision have a better understanding of behaviors and thinking that place them at risk for ongoing criminality. In July 2023, Beltrami County Corrections Agents were trained in the normative feedback process using the Level of Service Case Management Inventory which is a risk and needs assessment tool. Since that time, agents have continued to be involved in monthly coaching circles to build skills in this area of evidence-based practices.

### Council of State Governments (CSG)- Justice Reinvestment Initiative

All three MN delivery systems have partnered together and are currently receiving technical assistance from CSG and the Bureau of Justice Assistance (BJA) to continue to implement the recommendations for MN made by CSG after assessing the state's supervision procedures through the Justice Reinvestment Initiative. Legislatively, an oversight body, the Community Services Advisory Council (CSAC), was created with specific goals. That oversight group will provide both direction and approve recommendations from various statewide workgroups. Technical assistance was awarded to all 3 delivery systems to implement a statewide Risk/Needs Assessment tool. A workgroup was formed for this initiative and is actively working to implement one tool within the next year. All delivery systems have agreed to move forward

with using the Level of Service/Case Management Inventory (LS/CMI) as MN's risk and needs tool. The workgroup is currently working to create a "Request for Proposal" for outside parties to submit interest in validating this tool for the state of MN. Once validated, MN will utilize this tool to determine risk and need areas and level of supervision for justice-involved adults. Additional tools may also be utilized for offense specific cases and other responsivity areas.

There is also a Phase II workgroup that is designated to assist in the implementation of many of CSG's original recommendations. Initially, this group is looking at creating a single standard of supervision for MN, regardless of what county/agency a client is supervised in. Additionally, implementation of a statewide behavior modification tool or incentives/sanctions grid, is being considered.

CSG is also aiding Minnesota in development of statewide supervision outcome data. A statewide data committee has been established to create statewide outcomes that are able to measure supervision success and return on investment. The committee has worked with CSG staff to identify outcomes that impact success, such as housing or mental health rates, the percent of persons under supervision that are successfully completing cognitive behavior or other treatment services to address their pathways to criminality, and data on recidivism, violation rates, and percent of those who successfully completed required conditions of supervision. The committee is currently working on where the data is located, the ability to gather data statewide and standards on data input for each agency to follow.

Lastly ISR Transformation has been focused on supervision standards across all ISR agencies where the supervision is structured at an individual level rather than a "program". The purpose of ISR Transformation is to develop standards and guidelines for the administration of ISR that increases success (desistance), enhances equity, and appropriately balances the need for public safety with person-centered approaches. ISR Transformation is currently working on implementing the changes established by the working group in CY 2024.

## Strategic Planning at the Local Level

### 1. Training Initiatives

- Within the next 2 fiscal years, the remaining agents (5) will attend and complete the Tribal State Relations Training.
- Within the next 4 years, an additional 6 agents will complete the Decision Points Training and 2 additional agents will complete the Moving On Training.

### 2. Cognitive Behavioral Programming

- Expand cognitive behavioral intervention opportunities for medium and high-risk clients in their home communities.
- This programming will be Agent facilitated and at no cost to clients

### 3. Pre-Trial Supervision

- Is there a need for the expansion of pre-trial supervision?
- If expanded, what are the parameters of supervision and how will this be funded?
- What offenses might be targeted to reduce jail overcrowding?

#### 4. Legislative Subcommittee

- Form a subcommittee of the Beltrami County Corrections Board to develop legislative initiatives for Beltrami County around the new funding formula (ie: funding for pre-trial services within the capitated rate, focus on targeted misdemeanor offenses for funding, and a continuation of the capitated rate for cases discharged prior to expiration.

#### 5. Adult Diversion Services/Programming

- Form a subcommittee of the Beltrami County Corrections Board to explore opportunities for both the City and County Attorney offices to offer diversion programming for low level offenses.

## Pre-Trial, Diversion and Other Services

Pretrial standards based on best practices focus on maximizing court appearances and providing referral for services, rather than release condition compliance. Please see Pre Trial-Best Practices in Appendix B

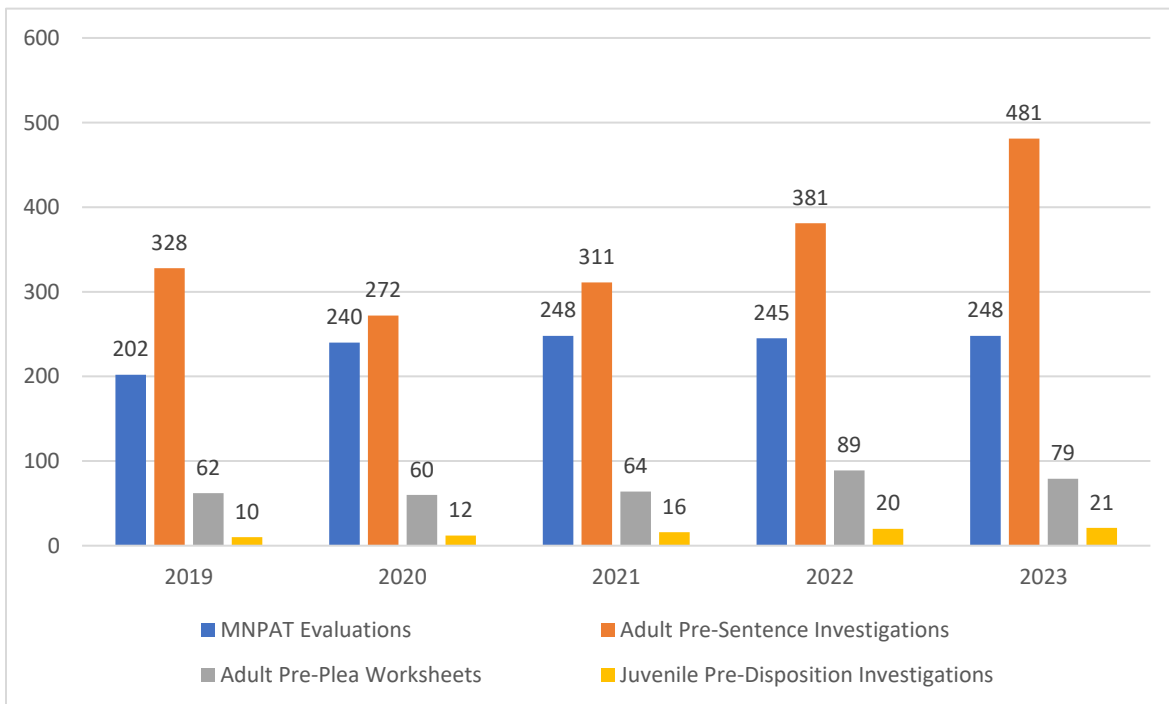
DOC completes the statutorily required bail studies for adults who are arrested and incarcerated. The bail studies are available for the Court and attorneys to review prior to the defendant's first appearance or arraignment in Court. DOC utilizes the statewide tool approved by Judicial Council and authorized by the State Court Administrator's Office. This tool is referred to as the Minnesota Pre-Trial Assessment Tool – Revised (MNPAT-R). Below is a graph outlining the number of MNPATs completed over the course of the previous 5 years.

DOC in Beltrami County provides pre-trial supervision in domestic violence-related cases to connect with the victim as a point of contact and to address any violations of release including violations of the Domestic Abuse No Contact Order (DANCO). DOC also provides pre-trial supervision on a limited basis on other criminal matters as ordered by the Court.

DOC completes adult pre-sentence investigations when ordered to do so by the Court. Typically, this involves all felony matters as well as all domestic violence-related matters, including misdemeanor and gross misdemeanor domestic cases. Below is a breakdown of pre-sentence investigation (PSI) reports for adults, pre-plea sentencing worksheets and pre-dispositional investigations (PDI) for juvenile matters completed in the past 5 years.

DOC provides supervision in all supervised release matters including intensive supervised release (ISR) and challenge incarceration program (CIP) participants. Traditional supervised release is supervised by the District Office under the supervision of District Supervisor Trish Hansen, while ISR and CIP clients are supervised by a team of ISR Agents under the supervision of District Supervisor Cody Underdahl.





## Narrative of Core Interventions and Evidence-based Practices (EBP)

The DOC uses risk, need, and responsivity principles for effective case management that adhere to the following:

### The DOC Key Supervision Principles:

**Use of validated risk needs and responsivity assessment tools that are validated and evaluated for disparities.** Primary assessment tools are LS/CMI and Youth Level of Service/Case Management Inventory (YLS/CMI) as the overall tool for most persons under supervision. For sex-specific crimes, the DOC uses the Static 99 and Stable, and the DOC MNSTARR 2.0 for risk on supervised releasees from a MN Correctional Facility. Field Services' policy is to have the assessment completed within 30 days of the person being placed under supervision and reassessed annually for adults and every six months for juveniles. The CSAC has prioritized validation of the LS/CMI tool for MN's justice-involved population in 2024.

In addition, the Beltrami County DWI and Drug Courts utilize the Risk and Needs Triage (RANT) tool which classifies clients into one of four risk quadrants based on their substance abuse and criminogenic risk/needs. For domestic violence clients, after assessing with the LS/CMI, Beltrami County uses the Domestic Violence Inventory (DVI) as a trailer assessment. The DVI provides client feedback on six different scales: Truthfulness, Violence, Alcohol, Drug, Control and Stress Coping Abilities.

**Supervision intensity and case management contacts vary based on level of risk per normed cut off scores.** Interventions are most effective in reducing recidivism when they match a person's assessed level of risk. Beltrami County works to manage caseloads by focusing supervision on medium and high-

risk clients. Minimum-risk clients are provided less supervision and are recommended for early discharge when eligible per DOC policy. Medium and high-risk clients are prioritized for cognitive behavioral programming such as Moving On or Decision Points in an effort to reduce recidivism within these populations.

**Adherence to general responsivity and providing cognitive behavior interventions.** Agents use core correctional practices, motivational interviewing, and skill directed interventions that include modeling, practice, and homework. All DOC agents are trained and provided electronic Carey Guides and 170 agents have Tools on Devices.

The National Institute of Corrections notes that justice involved clients who are moderate to high risk and complete cognitive behavioral programming can potentially reduce their recidivism by approximately 30%. Based on this information, DOC sent 5 agents to training in the Decision Points Cognitive Behavioral Curriculum. In March of 2023, agents collaborated and coordinated services to offer a weekly virtual adult men's cognitive behavioral program. In addition, DOC sent 5 agents to become trained in a female specific cognitive behavioral curriculum called Moving On. In February of 2023, agents collaborated with Leech Lake Chemical Health to jointly offer a weekly group for women using the Moving On curriculum. We have since added an additional Moving On program co-facilitated with staff from the Northwest Indian Community Development Center.

Below are the groups currently available to clients & facilitated or co-facilitated by Beltrami County DOC Agents:

#### Moving On

- Female specific cognitive behavioral based curriculum.
- 2 different in-person groups offered on a weekly basis and free of charge to clients.
- 1 group is offered at the Leech Lake Women's Outpatient Program and co-facilitated. with Leech Lake Chemical Health staff and free of charge to clients.
- 1 group is offered at the Northwest Indian Community Development Center (NWICDC). and co-facilitated with NWICDC staff and free of charge to clients.

#### Decision Points

- Cognitive behavioral based curriculum focused on thinking reports.
- 1 group per week offered virtually to Beltrami and Clearwater County clients.
- Facilitation entirely by corrections agents and free of charge to clients

#### River of Cruelty

- Domestic violence curriculum with cognitive behavioral component 3 different groups offered virtually each week.
- 2 groups are facilitated by agents in partnership with 2 local mental health providers and 1 female specific group is free of charge and facilitated entirely by corrections agents.
- Groups co-facilitated with mental health providers currently charge \$500 for the 24-week program.

**Addressing specific responsivity such as mental health, housing, gender, and culturally specific services.** The Minnesota Department of Corrections supports housing first initiatives and collaboration

for addressing mental health needs, gender specific interventions that target unique pathways into the justice system and working with Tribal Nations on supervision and intervention partnerships. The DOC has four full time staff that help work with persons and communities around housing needs. DOC supervisors and staff that work closely with our Tribal Nations participated in Tribal Relations training offered by the University of Minnesota in this last year and DOC has started to track tribal affiliation in our data management system for future gap analysis of programming needs.

DOC supervisors and staff that work closely with our Tribal Nations participated in Tribal Relations training offered by the University of Minnesota in this last year and DOC has started to track tribal affiliation in our data management system for future gap analysis of programming needs. Beltrami County currently has 5 out of 15 corrections agents that still need to complete Tribal Relations Training at this time. DOC Agents work closely with both the Red Lake and Leech Lake Nations to access chemical and mental health services for Tribal members.

DOC currently leases two apartment units in Beltrami County with the ability to house up to 4 single individuals within this space. This housing is reserved for individuals being released to the Beltrami County area who are homeless and placed on supervised release under ISR supervision. In addition, Beltrami County DOC partners with the local Housing Redevelopment Authority for grant funding to assist individuals who are homeless and on supervision with DOC. The challenge to fully utilize these grant dollars is the lack of available rental units within Beltrami County and specifically the Bemidji area.

**Caseload sizes for supervision intensity should be capped based on normed supervision and task workload studies.** Minnesota Department of Corrections uses supervision workload points tracked in CSTS to manage caseload sizes. Current staffing levels within Beltrami County are sufficient to meet expectations around Pre-Sentence Investigation Reports (PSI's), supervision and case management of clients. DOC is currently setting up a contract PSI writing position to assist with overflow PSI's at this time given the significant increase in PSI's over the previous year. Further expansion of pre-trial services such as broader use of pre-trial supervision, pre-trial color wheel testing, and pre-plea worksheets would require the addition of at least 1 FTE. The addition of this position would require County Board approval and funding by Beltrami County.

**Early discharge should focus on intervention dosage and not just the completion of conditions.** Within Beltrami County, clients may be referred to the Court for an early discharge if they are deemed low risk on an above-mentioned risk assessment tool and have been violation-free for at least 1 year. Also taken into consideration is the underlying offense. Those who commit crimes against another person, such as assaults and sex crimes, serve longer periods on probation than do property offenders. In any case, it is ultimately up to the Court as to when an individual may be discharged early from probation supervision. Supervised release clients must serve their entire supervised release period with no opportunity for early release.

**The focus of supervision is skill development.** While supervision focuses on conditions, agents work with clients in developing new skills to avoid future recidivism is the key to long-term success. Beltrami County DOC Agents are regularly engaged with clients in skill development through several cognitive-based programs as mentioned above. Skills learned within the group settings are reinforced by corrections agents during individual meetings with their clients.

**Use of incentives and adherence to the 4 to 1 positive ratios.** Agents are trained in using reinforcements which have proven to be more effective in supporting behavior changes than the use of punishment.

**Utilize community-based interventions compared to the reliance on out of home placements including incarceration for technical violations.** Programming and services in one's local community should be exhausted prior to recommending revocation.

DOC Agents work closely with any number of community based resources in an effort to provide programming and treatment alternatives prior to incarceration and out of home placement. Beltrami County agents work with a variety of mental health and chemical health stakeholders to address risk and needs in these areas. Connections with community-based peer support programs have also been established through treatment providers as well as Face It Together.

DOC also works closely with Beltrami County Health and Human Services and especially so with juvenile clients. DOC fully participates in and brings cases to the pre-placement screening committee. This committee is a multi-disciplinary team of individuals who meet to staff cases prior to a recommendation to the Court for an out of home placement. During these team meetings the parent/guardian of the juvenile and the juvenile are welcome to attend and offer input as well. DOC is also a partner to the Dually Involved Youth Project and collaborates with Beltrami County Health and Human Services (BCHHS), County Attorney's Office, Beltrami Area Service Collaborative (BASC), The Red Lake Nation and Leech Lake Nation to improve upon a process by which youth cases are staffed, information is shared, and collaborative case planning occurs. Dually involved youth are those who are or could potentially be involved in both the child protection and juvenile delinquency systems.

In 2023, the Department of Corrections funded a 45-day intervention center at the Northeast Regional Correctional Center (NERCC) for supervised release clients who are classified as high and very high risk and who are at risk for revocation to prison for technical violations. These clients are required to comply with applicable programming, assessments or education dependent on their risk and needs. Beltrami County is eligible to refer clients to this resource which is at no cost to the county.

Transportation can be a significant barrier for clients to access services as well as connection with their agent. Beltrami County agents often see clients within their homes or at other locations within the community to assist clients with transportation barriers. Agents travel to the Red Lake Nation and Leech Lake Nation on at least a weekly basis to see clients. Juveniles are often visited within their educational environment within Beltrami County.

Lastly, to improve re-entry services, DOC has awarded a grant to the Northwest Indian Community Development Center (NWCDC) in the amount of \$250,000 to focus on reentry services and supporting individuals who are on correctional supervision within the community. This grant began on 7/1/23.

## Victim Concerns

Per DOC policy, agents are required to send a victim notification packet to all identified victims when completing a PSI or PDI for the Court. Within the victim notification packet a restitution affidavit and victim impact statement are included. In addition to mailing out the victim notification packet, agents are required to attempt phone contact if the packet is not returned. The Beltrami County Attorney's Office employs a victim advocate who also assists in connecting agents with victims during the PSI/PDI stage.

Connection with victims is critical when supervising clients with sex offenses and/or domestic violence offenses. Every effort is made by agents to reach out to victims when necessary or when critical decisions must be made, such as contact-related concerns for the Court to address. Agents providing enhanced sex offender supervision are closely connected with the local sexual assault program and serve on the B-Smart Sexual Assault Team as well. The B-Smart Team reviews agency protocols/procedures to streamline services and to remain victim-centered in system responses. Agents providing intimate partner violence supervision are closely connected with the Northwoods Battered Women's Shelter.

## Correctional Fees

Beltrami County Contract Office imposes supervision fees on each adult case supervised within the Beltrami County Contract Office. These fees (\$100 per misdemeanor case and \$200 for gross misdemeanor cases) are charged directly to clients. If clients do not pay prior to the end of supervision, they are submitted for revenue recapture through the MN Dept. of Revenue. Beltrami County has averaged approximately \$8,000 per year since 2020 in collection of supervision fees. In 2023, a vehicle was purchased for the Beltrami County Contract Office with supervision fees to reduce mileage payouts to staff for travel to see clients.

DOC Supervision fees are no longer imposed due to statutory language changes. Fees previously imposed are deposited to the State of MN General Fund.

Fee Description	2022 Fees Imposed	2022 Fees Collected
<b>County Supervision Fee</b>	22,300.00	11,531.20
<b>DOC Supervision Fee</b>	86,000.00	25,919.63
<b>Total</b>	<b>108,300.00</b>	<b>37,450.83</b>

## Contracted Services and Proposal and Proposals for New Services

The Minnesota Department of Corrections covers all electronic monitoring costs for supervised release clients through a contract with BI Incorporated. All counties, regardless of delivery system, have access to the contract. Monitoring is generally established prior to the client's release from the MN Correctional Facility or through a violation hearing or restructure recommendation.

The Minnesota Department of Corrections covers all electronic home monitoring (EHM) costs for supervised release clients through a contract with BI Incorporated. All counties, regardless of delivery

system, have access to the contract. Monitoring is generally established prior to the client’s release from the MN Correctional Facility or through a violation hearing or restructure recommendation.

For juveniles and adult clients on probation, Beltrami County utilizes Midwest Monitoring for EHM services. In juvenile matters, Midwest Monitoring is paid using out of home placement dollars. EHM is typically used in juvenile pre-trial matters as well as some juvenile probation cases to reduce detention costs and utilize the least restrictive alternative.

Over the course of the last few years, the Beltrami County Jail has funded EHM for indigent adults on probation supervision in lieu of incarceration. This opened the door for EHM to be used as an intermediate sanction as previously, EHM was client pay only. Given the poverty noted in the introduction of this document, many if not all DOC clients were simply unable to afford an EHM alternative.

Beltrami County DOC is currently setting up a contract for a PSI Writer who can assist with the increased volume of PSI’s in Beltrami County. It is hoped that this contract will begin by the middle of February 2024. The contract is in the amount of \$5,000 per fiscal year.

## Budget

	FTEs	FY24	FY25	Total
<b>Felony</b>	<b>12.42</b>	<b>\$1,436,295.50</b>	<b>\$1,500,928.80</b>	<b>\$2,937,224.31</b>
Agent	7.26	\$ 749,285.54	\$ 783,003.39	\$ 1,532,288.93
Cost - CE	0.00	\$ 144,302.18	\$ 150,795.78	\$ 295,097.96
Cost - Interstate	0.00	\$ 53,841.10	\$ 56,263.95	\$ 110,105.06
Cost - Mgt-Admin		\$ 75,397.66	\$ 78,790.55	\$ 154,188.21
OAS Sr.	0.58	\$ 44,979.25	\$ 47,003.32	\$ 91,982.57
Supervisor	0.57	\$ 97,215.79	\$ 101,590.50	\$ 198,806.28
Support	2.00	\$ 156,787.77	\$ 163,843.22	\$ 320,630.99
TX Court	2.00	\$ 114,486.22	\$ 119,638.10	\$ 234,124.31
<b>Non-F</b>	<b>5.52</b>	<b>\$551,962.84</b>	<b>\$576,801.17</b>	<b>\$ 1,128,764.02</b>
CBB - Agent	4.00	\$ 480,222.70	\$ 501,832.72	\$ 982,055.41
CBB - Support	1.00	\$ 71,740.15	\$ 74,968.45	\$ 146,708.60
Cost - Mgt-Admin		\$ -	\$ -	\$ -
OAS Sr.	0.26	\$ -	\$ -	\$ -
Supervisor	0.26	\$ -	\$ -	\$ -
<b>Grand Total</b>	<b>17.93</b>	<b>\$1,988,258.35</b>	<b>\$2,077,729.97</b>	<b>\$4,065,988.32</b>

## Salary Roster

Classification	Budget Label	Min	Max
Office & Admin Specialist Int	Support	\$40,862.00	\$54,184.00
Office & Admin Specialist Sr	OAS Sr.	\$43,764.00	\$59,237.00
Corr Agent	Agent, CBB Agent	\$50,530.00	\$81,557.00
Corr Program Director	Supervisor	\$75,126.00	\$108,221.00
District Supervisor	Supervisor	\$90,390.00	\$129,247.00
Regional Manager	Cost - Mgt-Admin	\$96,800.00	\$138,883.00
Director	Cost - Mgt-Admin	\$115,800.00	\$165,683.00
Management Analyst 1	Cost - Mgt-Admin	\$47,210.00	\$68,298.00
Management Analyst 3	Cost - Mgt-Admin	\$55,624.00	\$81,557.00

## Highlights

### Enhanced Sex Offender Supervision

- Beltrami County DOC offers enhanced sex offender supervision for all adult sex offender specific clients placed on either probation or supervised release within Beltrami County. In addition to case management and supervision of these clients, agents co-facilitate sex offender treatment groups alongside our local treatment provider to enhance supervision and treatment as well as to provide opportunities for change while addressing public safety concerns in a swift manner when necessary. Beltrami County DOC utilizes the containment model for sex offender supervision which coordinates services/sanctions through 3 primary agencies: The Courts, Corrections, and Treatment Provider to hold clients accountable and address public safety. DOC Agents currently co-facilitate 3 sex offender groups per week.

### Domestic Violence Court

- DOC collaborates with local treatment providers to offer Batterer Intervention Education Programs for men and women utilizing the River of Cruelty curriculum noted above. Agents co-facilitate these programs and provide feedback to the Court about clients being served within these programs. Currently, DOC Agents provides co-facilitation for 2 different men's groups per week in collaboration with area mental health providers. DOC agents offer female specific programming around violence via the Pathways to Safer Families program which is offered once per week. Both the men's and women's programs utilize the River of Cruelty Curriculum.

## Domestic Violence Pre-Trial Supervision/Support

- DOC collaborates with the Courts, Law Enforcement and County Attorney's Office to offer pre-trial supervision services to those individuals charged with intimate partner violence and placed on pre-trial supervision by the Court. To provide client accountability for Domestic Abuse No Contact Orders/Orders for Protection as well as to enhance victim safety, Agents reach out to the victims in these matters in an effort to offer further support and/or services.

## DWI Court:

- DOC supports DWI Court through grant funds from the Office of Traffic Safety. DWI Court operates using a team approach with membership from the County Attorney's Office, Law Enforcement, Judiciary, Probation, local treatment providers, Beltrami County Health and Human Services and the Beltrami County Jail. DWI Court is an intensive program for repeat DWI offenders focused on accountability as well as a strong holistic treatment component. It is a goal for DWI Court to develop and encourage stakeholders to expand opportunities for clients to access treatment in their home communities.

## Drug Court:

- DOC supports Drug Court through grant funds from the Bureau of Justice Assistance. Drug Court operates using a team approach with membership from the County Attorney's Office, Law Enforcement, Judiciary, Probation, Beltrami County Health and Human Services, local treatment providers and the Beltrami County Jail. Drug Court is an intensive program for drug addicted clients focused on accountability as well as a strong holistic treatment component.



## Appendix A Training Requirements

Title	Hours	Applicability	Description
Defensive Tactics	8	All DT trained staff	Recertification for all staff previously trained in defensive tactics.
Office Safety	3	All office staff (STS discretionary)	Office safety training w/scenarios
EBP Trainings	20	All Agents	2 hrs of training for each of the following: Case Planning, MI, CCP, Carey Guides, LSCMI/YLSCMI, formal/informal boosters, COPs Staff will be required to obtain the remaining 10 hours through self-learning opportunities and/or formal learning (literature review, webinars, EBP Café videos, additional boosters, other training opportunities). Staff can access EBP resource information: <a href="https://mn.gov/doc/assets/Virtual%20EBP%20Options%204-2023_tcm1089-572601.docx">https://mn.gov/doc/assets/Virtual%20EBP%20Options%204-2023_tcm1089-572601.docx</a>
Interstate Compact	2.5	All ICOTS Users	2.5 hours of refresher or advanced course regarding Adult Interstate Compact
Trauma Informed Care	1-2	All Staff	TBD
Intrastate Transfer/Release Planning	4	Agents	Updated policy changes (Spring 2024)
MNPAT	1	Staff who complete Bail Evaluations	Release January 2024 (training Dec 2023)

**The below will be discretionary training.**

Title	Hours	Applicability	Description
NARCAN	1	All staff carrying Narcan or requesting to carry	Naloxone training to administer nasal spray in OD incidents. Review of Opioid exposure and signs/symptoms
Chemical Irritant	1	All staff issued CI	TBD-is this needed for re-cert
Mental Health Training	TBD	All staff who have contact with clients	TBD
Tribal State Relations Training	TBD	All agent staff who work with Tribal Nations	Culturally Specific Training
Adverse Childhood Experience Training (ACES)	TBD	Agent Staff	Understanding the tool and what it means when working with clients
Sovereign Citizen Training	TBD	Agent Staff	Understanding the culture of sovereign citizens and how to work with this population

## Appendix B Pre-Trial-Standards

Operationalized Mission - The DOC's mission as it relates to pretrial monitoring is to enhance public safety through evidence-based strategies that minimize re-arrest, ensure court appearance, and provide support for released defendants.

Staff will be educated in best practices regarding pre-trial monitoring and will share this knowledge with local stakeholders. It is strongly recommended that stakeholders meet and regularly discuss the framework within which pretrial monitoring will occur as well as to discuss responses to pretrial failures. Information pertaining to community safety issues regarding pretrial monitoring should be discussed with stakeholders on an ongoing basis.

Universal Screening - A designated risk assessment tool approved by Judicial Council will be completed on all offenses required by Minnesota Statute 629.74, with encouragement for use on all assault-related misdemeanor and gross misdemeanor offenses to include DANCO Violations. Court-involved stakeholders will be encouraged to utilize the risk assessment scores, in addition to other information presented at the preliminary hearing, when making decisions regarding Release on Recognizance, Pre-trial Monitoring or Remanding a defendant.

Validated Pre-Trial Risk Assessments - Once placed on pre-trial monitoring, the designated risk assessment tool approved by Judicial Council will be used to determine the level of supervision.

Sequential Bail Review - A process by which agents can target scheduled court hearings to address non-emergency violations of pre-trial monitoring, progress reports or make a recommendation to the Court to end pretrial monitoring in the community due to positive adjustment. Agents will not be requesting any changes to monetary bail. Agents may also request adjustments regarding conditions of supervision. Emergency issues will be addressed with the Court as needed.

Risk-Based Monitoring - Minimum Standards - Following a court order for pre-trial monitoring, a validated risk assessment as noted above will be utilized to place defendants into one of three categories for pre-trial monitoring:

- Only the highest-risk defendants, based on the validated risk assessment, will receive formal pre-trial monitoring support. Low and Medium scores will result in minimal interaction with corrections staff.
- Low & Medium: Contact with the defendant will occur as needed and necessary to accomplish or assist in compliance with pre-trial monitoring conditions. These levels will

involve monitoring of conditions as ordered by the Court, such as EHM, drug testing, and violations regarding new criminal behavior.

- Monitoring may take place electronically, by phone and/or virtually. Ideally, low scoring defendants will not be placed on pre-trial monitoring to DOC.
- High: Contact with the defendant will occur a minimum of once per month. Contact may be virtual and/or office visit. This level will involve monitoring of conditions as ordered by the Court, such as EHM, drug testing, and violations regarding new criminal behavior.

#### Focus for Contacts:

- Reminder of next Court date
- Update phone/address/employment information. Agent will remind client to contact Court Administration with updated address. Agent will provide updated address information to Court Administration as well.
- Inquire as to if they have had any new arrests/citations.
- Provide information about housing, employment, and any other resources requested by the client.
- Follow up with any court-ordered obligations as appropriate (i.e., chemical and/or mental health assessments, color wheel testing, etc.)
- Increase/decrease pre-trial monitoring in the community based on adjustment and/or risk assessment.

#### Boundaries of Pre-Trial Monitoring:

- Absolutely no discussion regarding any details of their alleged criminal offense. All defendants will be referred to their defense attorney for these types of discussions.
- Agents will not provide an opinion regarding plea agreements during the pre-trial monitoring process.
- Agents MAY comment on cooperation regarding pre-trial monitoring.
- Court Reporting Process (violations/progress/discharges)
- Violation/Progress/Discharge reports will be filed as needed by the agent directly with the Court for review and decision-making. Copies will be served to the prosecuting attorney and defense attorney.
- Performance Measurement and Feedback
- Percentage of pre-trial defendants who made all Court appearances (CSTS enhancement is needed to track this information)
- Percentage of pre-trial defendants who remained compliant with Court conditions during pre-trial monitoring (not to include re-arrest)
- Percentage of pre-trial defendants who remained law abiding during their pre-trial monitoring.

- Validate the risk assessment tool approved by Judicial Council to target high-risk defendants for placement on pre-trial monitoring.
- Comparisons between districts regarding successes in each risk level category.
- Develop specialized training program for Pre-Trial Division with technical assistance from the National Institute of Corrections (NIC).

<https://nicic.gov/pretrial-justice-how-maximize-public-safety-court-appearance-and-release-internet-broadcast>

## Appendix C Overview of Supervision Population

(INCLUDING Pre-Trial, Probation, SR, and ISR)

### \*Pretrial Agent Tasks

Adult	2020		2020 Total	2021		2021 Total	2022		2022 Total	Grand Total
	Hispanic	Unknown		Hispanic	Unknown		Hispanic	Unknown		
Female	1	178	179		206	206	2	195	197	582
Felony	1	130	131		151	151	2	140	142	424
Am Ind/Alaskan Nat		99	99		117	117		110	110	326
Black		4	4		2	2				6
Unknown	1	2	3		5	5	2	5	7	15
White		25	25		27	27		25	25	77
Gross Misdemeanor		19	19		35	35		31	31	85
Am Ind/Alaskan Nat		14	14		27	27		20	20	61
Black					1	1		2	2	3
Unknown		1	1		3	3		6	6	10
White		4	4		4	4		3	3	11
Misdemeanor		29	29		20	20		24	24	73
Am Ind/Alaskan Nat		21	21		17	17		13	13	51
Unknown		3	3		1	1		2	2	6
White		5	5		2	2		9	9	16
Male	3	503	506	5	585	590	9	631	640	1736
Felony	3	330	333	5	410	415	8	442	450	1198
Am Ind/Alaskan Nat	3	204	207	2	212	214	1	247	248	669
Asian/Pacific Islander								3	3	3
Black		14	14		32	32		28	28	74
Unknown		5	5	2	10	12	5	14	19	36
White		107	107	1	156	157	2	150	152	416

Gross Misdemeanor	91	91	93	93		92	92	276		
Am Ind/Alaskan Nat	51	51	56	56		63	63	170		
Asian/Pacific Islander						2	2	2		
Black	2	2	7	7		3	3	12		
Unknown	2	2	8	8		1	1	11		
White	36	36	22	22		23	23	81		
Misdemeanor	80	80	82	82	1	97	98	260		
Am Ind/Alaskan Nat	42	42	43	43		43	43	128		
Black	3	3	8	8		8	8	19		
Unknown	10	10	6	6	1	8	9	25		
White	25	25	25	25		38	38	88		
Petty Misdemeanor	2	2						2		
White	2	2						2		
<b>Grand Total</b>	<b>4</b>	<b>681</b>	<b>685</b>	<b>5</b>	<b>791</b>	<b>796</b>	<b>11</b>	<b>826</b>	<b>837</b>	<b>2318</b>

*\*Pretrial Agent Tasks*

	2020	2021	2022		Grand Total
Juvenile	Unknown	Unknown	Hispanic	Unknown	
Female	3	3		4	10
Am Ind/Alaskan Nat	2	3		3	8
Black	1				1
White				1	1
Male	6	11	1	12	30
Am Ind/Alaskan Nat	3	5	1	6	15
Black		1		3	4
Unknown		2			2
White	3	3		3	9
<b>Grand Total</b>	<b>9</b>	<b>14</b>	<b>1</b>	<b>16</b>	<b>40</b>

\*Probation Population

Year	Type	County	Adult/Juvenile	Offense Level	Previous Year	Entries	Removals	Year End	Males	Females	White	Black	American Indian	Asian	Other Race	Hispanic	Non Hispanic Unknown
2020	DOC	Beltrami	Adult	Felony	583	109	162	538	373	165	195	17	321	0	5	3	535
2020	DOC	Beltrami	Adult	Gross Misd	210	67	95	182	126	56	65	3	110	1	3	0	182
2020	DOC	Beltrami	Adult	Misd	81	30	46	57	48	9	19	0	33	0	5	0	57
2020	DOC	Beltrami	Juvenile	Juvenile	51	25	36	40	32	8	12	3	25	0	0	1	39
<b>Total</b>					<b>925</b>	<b>231</b>	<b>339</b>	<b>817</b>	<b>579</b>	<b>238</b>	<b>291</b>	<b>23</b>	<b>489</b>	<b>1</b>	<b>13</b>	<b>4</b>	<b>813</b>

Year	Type	County	Adult/Juvenile	Offense Level	Previous Year	Entries	Removals	Year End	Males	Females	White	Black	American Indian	Asian	Other Race	Hispanic	Non Hispanic Unknown
2021	DOC	Beltrami	Adult	Felony	532	132	168	512	361	151	186	18	299	0	9	2	510
2021	DOC	Beltrami	Adult	Gross Misd	180	70	102	138	100	38	49	3	80	1	5	0	138
2021	DOC	Beltrami	Adult	Misd	57	35	30	56	42	14	16	1	33	0	6	0	56
2021	DOC	Beltrami	Juvenile	Juvenile	42	33	40	35	25	10	7	2	25	0	1	0	35
<b>Total</b>					<b>811</b>	<b>270</b>	<b>340</b>	<b>741</b>	<b>528</b>	<b>213</b>	<b>258</b>	<b>24</b>	<b>437</b>	<b>1</b>	<b>21</b>	<b>2</b>	<b>739</b>

Year	Type	County	Adult/Juvenile	Offense Level	Previous Year	Entries	Removals	Year End	Males	Females	White	Black	American Indian	Asian	Other Race	Hispanic	Non Hispanic Unknown
2022	DOC	Beltrami	Adult	Felony	503	161	167	514	365	149	178	15	310	1	10	5	509
2022	DOC	Beltrami	Adult	Gross Misd	143	69	73	127	93	34	44	2	76	2	3	1	126
2022	DOC	Beltrami	Adult	Misd	58	48	37	64	49	15	24	3	33	0	4	0	64
2022	DOC	Beltrami	Juvenile	Juvenile	35	41	38	38	26	12	7	3	26	0	2	1	37
<b>Total</b>					<b>739</b>	<b>319</b>	<b>315</b>	<b>743</b>	<b>533</b>	<b>210</b>	<b>253</b>	<b>23</b>	<b>445</b>	<b>3</b>	<b>19</b>	<b>7</b>	<b>736</b>

\* Supervised Release (SR), Parole, and Intensive Supervised Release (ISR) Population

	2020	2020 Total	2021		2021 Total	2022	2022 Total	Grand Total
	Non Hispanic		Hispanic	Non Hispanic		Non Hispanic		
<b>Intensive Supervised Release</b>	<b>42</b>	<b>42</b>	<b>1</b>	<b>35</b>	<b>36</b>	<b>18</b>	<b>18</b>	<b>96</b>
<b>Male</b>	<b>42</b>	<b>42</b>	<b>1</b>	<b>35</b>	<b>36</b>	<b>18</b>	<b>18</b>	<b>96</b>
American Indian or Alaskan Native	18	18						18
American Indian-Non Hispanic				11	11	4	4	15
Asian or Pacific Islander	1	1						1
Asian-Non Hispanic				1	1	1	1	2
Black	4	4						4
Black-Non Hispanic				1	1	1	1	2
White	19	19						19
White-Hispanic			1		1			1
White-Non-Hispanic				22	22	12	12	34
<b>Standard Supervised Release</b>	<b>93</b>	<b>93</b>	<b>1</b>	<b>87</b>	<b>88</b>	<b>84</b>	<b>84</b>	<b>265</b>
<b>Female</b>	<b>7</b>	<b>7</b>		<b>9</b>	<b>9</b>	<b>19</b>	<b>19</b>	<b>35</b>
American Indian or Alaskan Native	5	5						5
American Indian-Non Hispanic				4	4	14	14	18
Black	1	1						1
White	1	1						1
White-Non-Hispanic				5	5	5	5	10
<b>Male</b>	<b>86</b>	<b>86</b>	<b>1</b>	<b>78</b>	<b>79</b>	<b>65</b>	<b>65</b>	<b>230</b>
American Indian or Alaskan Native	47	47						47
American Indian-Non Hispanic				38	38	35	35	73
Asian-Non Hispanic				1	1			1
Black-Non Hispanic				3	3	1	1	4
White	39	39						39
White-Hispanic			1		1			1
White-Non-Hispanic				36	36	29	29	65
<b>Grand Total</b>	<b>135</b>	<b>135</b>	<b>2</b>	<b>122</b>	<b>124</b>	<b>102</b>	<b>102</b>	<b>361</b>



In addition, please provide the following:

- Average Caseload Sizes by Caseload Type
- Percentage and number of probation clients by Risk Levels (Very High/High, Medium, Low, and Unknown)

*\*Select agents supervise clients across multiple counties. \*Risk Level snapshot in Dec 2022.*

Risk Level	High		Low		Medium		Prescreen Low--No Assmt		Unknow		Total #	Total %
	#	%	#	%	#	%	#	%	n #	%		
<b>Adult</b>	<b>99</b>	<b>100.00%</b>	<b>306</b>	<b>95.92%</b>	<b>348</b>	<b>94.57%</b>	<b>2</b>	<b>50.00%</b>	<b>61</b>	<b>92.42%</b>	<b>816</b>	<b>95.33%</b>
Aeron J. Muckala	6	6.06%	31	9.72%	31	8.42%		0.00%	9	13.64%	77	9.00%
Alicia Senenfelder	6	6.06%	24	7.52%	24	6.52%		0.00%	7	10.61%	61	7.13%
Ann Maki	7	7.07%	25	7.84%	35	9.51%		0.00%	1	1.52%	68	7.94%
Breanna Norenberg	11	11.11%	37	11.60%	34	9.24%		0.00%	1	1.52%	83	9.70%
Cassidy C. Linder	3	3.03%	14	4.39%	14	3.80%	2	50.00%	13	19.70%	46	5.37%
Dan R. Jones	3	3.03%	2	0.63%	14	3.80%		0.00%	1	1.52%	20	2.34%
Dustin D. Waller	1	1.01%	26	8.15%	16	4.35%		0.00%	10	15.15%	53	6.19%
Hailey J. Olson	7	7.07%	37	11.60%	40	10.87%		0.00%	5	7.58%	89	10.40%
Kaitlyn Hayft	7	7.07%	16	5.02%	13	3.53%		0.00%	2	3.03%	38	4.44%
Kaitlyn Vesel	19	19.19%	23	7.21%	31	8.42%		0.00%	1	1.52%	74	8.64%
Robert Christie	8	8.08%	6	1.88%	6	1.63%		0.00%	2	3.03%	22	2.57%
Sky Jager	2	2.02%	20	6.27%	11	2.99%		0.00%	1	1.52%	34	3.97%
Tiffany Olson	10	10.10%	26	8.15%	38	10.33%		0.00%	5	7.58%	79	9.23%
Trisha XHansen-EA	9	9.09%	19	5.96%	41	11.14%		0.00%	3	4.55%	72	8.41%
<b>Juvenile</b>		<b>0.00%</b>	<b>13</b>	<b>4.08%</b>	<b>20</b>	<b>5.43%</b>	<b>2</b>	<b>50.00%</b>	<b>5</b>	<b>7.58%</b>	<b>40</b>	<b>4.67%</b>
Cassidy C. Linder		0.00%	9	2.82%	5	1.36%	2	50.00%	5	7.58%	21	2.45%
Dustin D. Waller		0.00%	4	1.25%	15	4.08%		0.00%		0.00%	19	2.22%
<b>Grand Total</b>	<b>99</b>	<b>100.00%</b>	<b>319</b>	<b>100.00%</b>	<b>368</b>	<b>100.00%</b>	<b>4</b>	<b>100.00%</b>	<b>66</b>	<b>100.00%</b>	<b>856</b>	<b>100.00%</b>

Adult	Assignment Type	High		Low		Medium		Prescreen Low--No Assmt		Unknown		Total	Total %
		#	%	#	%	#	%	#	%	#	%	#	%
Felony		82	82.83%	224	73.20%	285	81.90%		0.00%	23	37.70%	614	75.25%
	Administrative Caseload (includes STS only/unsup probation/juvenile monitoring)		0.00%	1	0.33%		0.00%		0.00%		0.00%	1	0.12%
	CIP		0.00%		0.00%	1	0.29%		0.00%		0.00%	1	0.12%
	Enhanced Supervision	53	53.54%	2	0.65%	6	1.72%		0.00%		0.00%	61	7.48%
	ESO Phase 1	9	9.09%	2	0.65%	3	0.86%		0.00%	1	1.64%	15	1.84%
	ESO Phase 2		0.00%		0.00%	15	4.31%		0.00%	1	1.64%	16	1.96%
	ESO Phase 3		0.00%	24	7.84%	1	0.29%		0.00%		0.00%	25	3.06%
	ESO Phase 4		0.00%	8	2.61%		0.00%		0.00%		0.00%	8	0.98%
	Intake/Pretrial/Investigation Caseload- includes incoming transfers	1	1.01%	1	0.33%	2	0.57%		0.00%		0.00%	4	0.49%
	Pre-Trial Supervision	1	1.01%		0.00%	3	0.86%		0.00%	13	21.31%	17	2.08%
	Specialty Court-Pre-Trial		0.00%		0.00%	1	0.29%		0.00%		0.00%	1	0.12%
	Specialty Court-Probation	9	9.09%	19	6.21%	45	12.93%		0.00%	1	1.64%	74	9.07%
	Traditional Supervision	9	9.09%	167	54.58%	208	59.77%		0.00%	7	11.48%	391	47.92%
Gross Misdemeanor		14	14.14%	51	16.67%	50	14.37%	1	50.00%	14	22.95%	130	15.93%
	Enhanced Supervision	2	2.02%		0.00%		0.00%		0.00%		0.00%	2	0.25%
	ESO Phase 2		0.00%		0.00%	3	0.86%		0.00%		0.00%	3	0.37%
	ESO Phase 3		0.00%	1	0.33%		0.00%		0.00%		0.00%	1	0.12%
	Pre-Trial Supervision		0.00%		0.00%	1	0.29%		0.00%	2	3.28%	3	0.37%
	Specialty Court-Probation	11	11.11%	13	4.25%	12	3.45%		0.00%	5	8.20%	41	5.02%
	Traditional Supervision	1	1.01%	37	12.09%	34	9.77%	1	50.00%	7	11.48%	80	9.80%
Misdemeanor		3	3.03%	31	10.13%	13	3.74%	1	50.00%	24	39.34%	72	8.82%
	Enhanced Supervision	1	1.01%		0.00%		0.00%		0.00%		0.00%	1	0.12%
	Pre-Trial Supervision		0.00%		0.00%	1	0.29%		0.00%	10	16.39%	11	1.35%
	Specialty Court-Probation	2	2.02%	19	6.21%	11	3.16%		0.00%	11	18.03%	43	5.27%
	Traditional Supervision		0.00%	12	3.92%	1	0.29%	1	50.00%	3	4.92%	17	2.08%
<b>Grand Total</b>		<b>99</b>	<b>100.00%</b>	<b>306</b>	<b>100.00%</b>	<b>348</b>	<b>100.00%</b>	<b>2</b>	<b>100.00%</b>	<b>61</b>	<b>100.00%</b>	<b>816</b>	<b>100.00%</b>

Juvenile Assignment Type	Low		Medium		Prescreen Low--No Assmt		Unknown		Total #	Total %
	#	%	#	%	#	%	#	%		
Intake/Pretrial/Investigation Caseload- includes incoming transfers	1	7.69%		0.00%		0.00%		0.00%	1	2.50%
Traditional Supervision	12	92.31%	20	100.00%	2	100.00%	5	100.00%	39	97.50%
<b>Grand Total</b>	<b>13</b>	<b>100.00%</b>	<b>20</b>	<b>100.00%</b>	<b>2</b>	<b>100.00%</b>	<b>5</b>	<b>100.00%</b>	<b>40</b>	<b>100.00%</b>

Please also provide the following outcomes for CY 2022:

- Percent of adult probation cases successfully closed and unsuccessfully closed.
- Percent of juvenile probation cases successfully closed and unsuccessfully closed.

Adult	Successful		Unsuccessful		Total # of cases	Total %
	# of cases	%	# of cases	%		
<b>Felony</b>	<b>125</b>	<b>36.02%</b>	<b>68</b>	<b>19.60%</b>	<b>193</b>	<b>55.62%</b>
Discharge	1	0.29%		0.00%	1	0.29%
Discharge-Early	53	15.27%		0.00%	53	15.27%
Discharge-Expiration	52	14.99%		0.00%	52	14.99%
Discharge-Multiple Stay Types	1	0.29%		0.00%	1	0.29%
Dismiss	18	5.19%		0.00%	18	5.19%
Executed-Client Demanded-COC serving MCF (Felony Supervision)		0.00%	10	2.88%	10	2.88%
Executed-COC but serving Local (Felony Supervision)		0.00%	6	1.73%	6	1.73%
Executed-COC serving MCF (Felony Supervision)		0.00%	50	14.41%	50	14.41%
Executed-Court-LOC (GM/M Supervision cases)		0.00%	2	0.58%	2	0.58%
<b>Gross Misdemeanor</b>	<b>69</b>	<b>19.88%</b>	<b>25</b>	<b>7.20%</b>	<b>94</b>	<b>27.09%</b>
Discharge-Early	22	6.34%		0.00%	22	6.34%
Discharge-Expiration	34	9.80%		0.00%	34	9.80%
Dismiss	13	3.75%		0.00%	13	3.75%
Executed-Client Demanded-LOC (GM/M Supervision)		0.00%	5	1.44%	5	1.44%
Executed-Court-LOC (GM/M Supervision cases)		0.00%	20	5.76%	20	5.76%

<b>Misdemeanor</b>	<b>44</b>	<b>12.68%</b>	<b>16</b>	<b>4.61%</b>	<b>60</b>	<b>17.29%</b>
Discharge	1	0.29%		0.00%	1	0.29%
Discharge-Early	12	3.46%		0.00%	12	3.46%
Discharge-Expiration	27	7.78%		0.00%	27	7.78%
Dismiss	4	1.15%		0.00%	4	1.15%
Executed-Client Demanded-LOC (GM/M Supervision)		0.00%	2	0.58%	2	0.58%
Executed-Court-LOC (GM/M Supervision cases)		0.00%	14	4.03%	14	4.03%
<b>Grand Total</b>	<b>238</b>	<b>68.59%</b>	<b>109</b>	<b>31.41%</b>	<b>347</b>	<b>100.00%</b>

<b>Juvenile</b>	<b>Successful # of cases</b>	<b>%</b>	<b>Total # of cases</b>	<b>Total %</b>
Discharge-Early	26	47.27%	26	47.27%
Discharge-Expiration	6	10.91%	6	10.91%
Dismiss	23	41.82%	23	41.82%
<b>Grand Total</b>	<b>55</b>	<b>100.00%</b>	<b>55</b>	<b>100.00%</b>