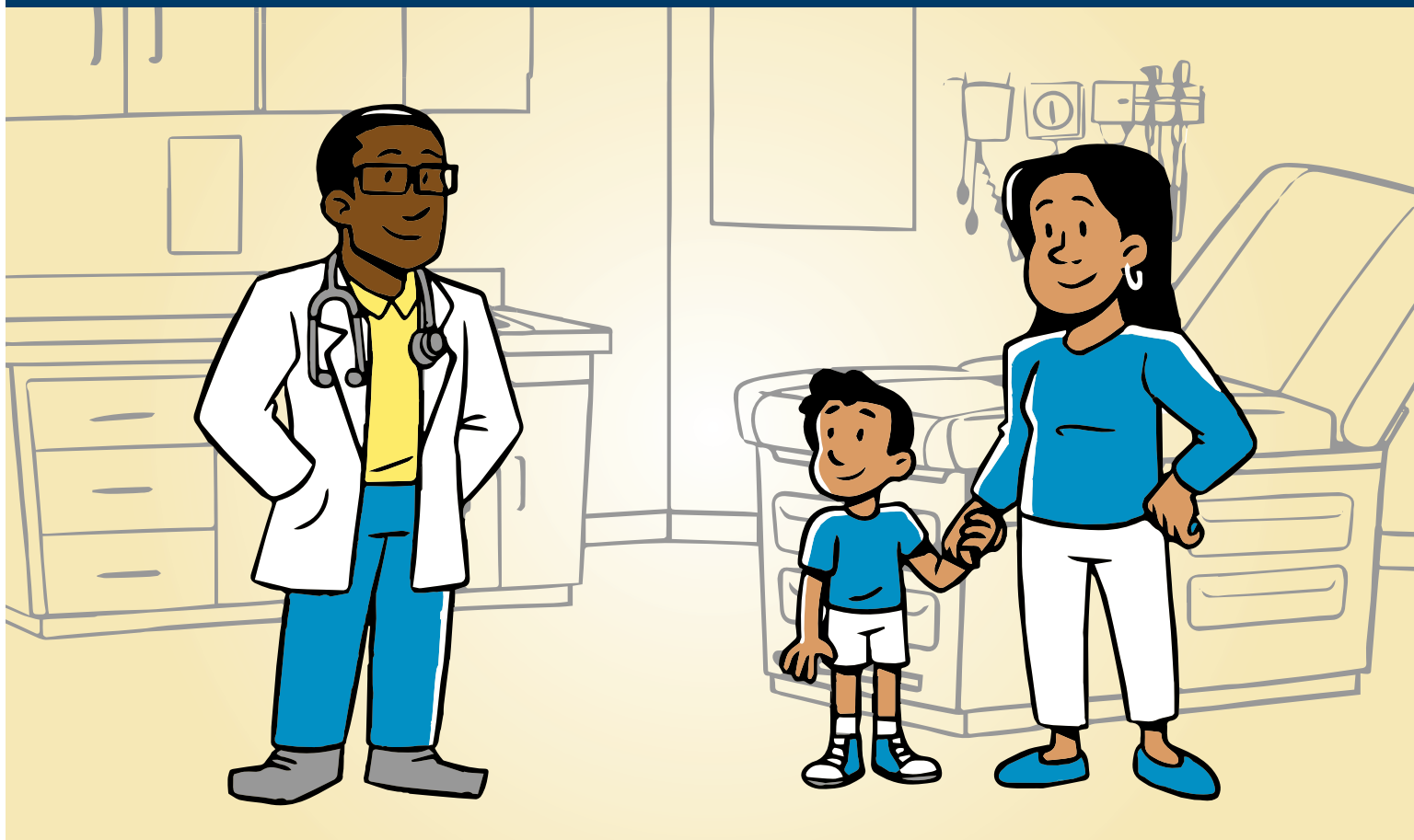


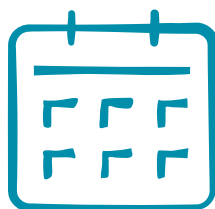
# Be prepared to renew



## It's time to renew your health care coverage

Your health insurance needs to be renewed periodically to avoid losing access to affordable health care services when you and your family need them.

Keep your Medical Assistance or MinnesotaCare by being prepared to renew.



### Mark your calendar

Know your renewal deadline and set a reminder.

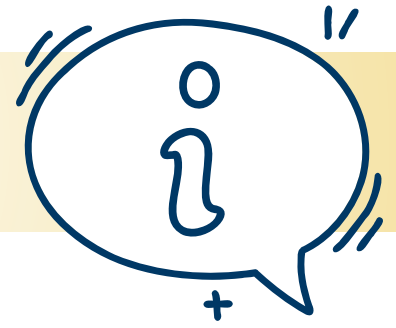


### Time to get started

Don't put it off. Renew your coverage as soon as possible.

[mn.gov/dhs/renewmycoverage](https://mn.gov/dhs/renewmycoverage)

# Help is just call or click away



## Medical Assistance

Contact your county office or tribal agency.

Find your agency:

[mn.gov/dhs/health-care/county-tribal-offices](https://mn.gov/dhs/health-care/county-tribal-offices)

## MinnesotaCare

Call consumer support: 651-297-3862 or 800-657-3672

## Renew My Coverage website

Find step-by-step instructions to re-enroll:

[mn.gov/dhs/renewmycoverage](https://mn.gov/dhs/renewmycoverage)

## Renewal date look-up tool

Learn when your renewal is due: [mnrenewallookup.com](https://mnrenewallookup.com)

## Contact your health insurance provider

- Blue Plus: 866-518-8448
- HealthPartners: 866-885-8880 (PMAP/MNCare/SNBC/MS+) or 888-820-4285 (MSHO)
- Hennepin Health: 612-596-1036
- Itasca Medical Care: 800-843-9536
- Medica: 1-877-357-3157
- PrimeWest Health: 866-431-0801
- South Country Health Alliance: 866-567-7242
- UCare: 651-603-4360 (PMAP/MNCare) or 1-855-307-6978 (Connect, Connect+, MSHO, MS+)
- UnitedHealthCare-MN: 877-440-9946

## For help completing renewal forms

A MNsure certified navigator can help. Find one:

[mnsure.org/help/find-assister/find-assister.jsp](https://mnsure.org/help/find-assister/find-assister.jsp)



## Watch and learn

Videos are available to help guide you through the renewal process.

