

July 31, 2019

Direct Support **Connect**[™]
DirectSupportConnect.com

An Introduction to Direct Support Connect[®] (DSC)

Presented by: Breanna Bertozzi
and Jessica Reno

Agency: MN Department of Human
Services

Background

Direct Support Connect® was created to address the shortage of direct support workers in Minnesota.



PCA Services

Direct support work is vital to many people's lives.



Direct support workers assist others with daily activities.

Direct support workers are in high demand throughout Minnesota.

What is DSC?

Direct Support Connect® is Minnesota's dedicated online job board for direct support workers, such as PCAs, and the people who hire them.

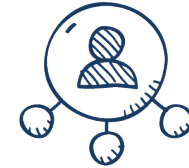
How It Works?



By creating a personal profile, **people who need assistance** can post and describe their work opportunities.



Likewise, **support workers** can create profiles that highlight their skills, availability and other preferences.



The website uses this data to match workers to jobs, or a person to available workers.

Create Account

Direct Support Connect™
DirectSupportConnect.com

Chat

Select Language ▼

Direct Support Connect™

A job board for direct support workers
and the people who hire them.

My account: Sign In >

mi DEPARTMENT OF
HUMAN SERVICES

[Home](#) [About the job board](#) [Registration information](#) ▼ [Become a support worker](#) [Resources](#) ▼

Connect to jobs you'll love. Connect with people you'll want to hire.

Direct Support Connect™ is Minnesota's dedicated job board
and hiring resource for direct support workers, such as PCAs.

I am a direct support worker.
[Learn more >](#)

I want to hire a worker.
[Learn more >](#)



Create Profile

Chat

Select Language ▼

Direct Support Connect

mn DEPARTMENT OF
HUMAN SERVICES

Search ▾ For Workers For

Account Overview

[My Profile\(s\)](#)

[My Account Settings](#)

Enter a First and Last Name to Identify this Profile ✕

I am a Support Worker

I am Seeking a Support Worker

Note: Only one support worker profile is allowed per account

First Name

Last Name

er to search for and connect
profile by selecting the 'Add

Haven't found what you need? For information about other available resources, please visit [MinnesotaHelp.Info®](https://www.mn.gov/MinneapolisHelpInfo)

Profile Type

Direct Support Worker Profile:

Required Information ▼

Basic Information ▼

Work Availability ▼

Training & Past Work Experience ▼

More about Me ▼

Seeking A Support Worker Profile:

Required Information ▼

Basic Information ▼

Scheduling Needs ▼

Support ▼

More about Me ▼

Direct Support Worker Profile:

About Me

My name is Jessica and I am an RN with 10 years of experience supporting older adults with their daily personal needs. I have specialized training working providing memory care services to people with dementia and Alzheimer's. When I am not helping others- my hobbies include gardening, baking, and spending time with my children.

Seeking A Support Worker Profile:

About Me

My name is Joshua and I am a 26 year old male who is looking for a friendly, reliable direct support worker to support me in my personal needs every Tuesday and Thursday from 6-11pm. Due to a spinal cord injury, I need assistance with bathing, toileting, transfers, and meal preparation. I am currently a college student and would enjoy connecting with a male staff who is interested in videogames, history, or basketball as these are my favorite hobbies.

Filters

Search Within the Results



Filter Results by Distance



Applied Filters;

[Clear All Filters](#)



Hours per week



Days of week



Times of day



Supports provided



Able to lift



Years of experience



Experience: specific diagnoses



Experience: age groups



Education level completed



Matches For Jessica

Below is a list of support workers that may meet your needs. You can change the results below by removing or adding filters. Need help? Chat or email Direct Support Connect® using the Chat with Us link in the blue banner at the top of the page.

***Disclaimer:** Some agencies or Fiscal Support Entities (FSEs) may have certain rules around hiring workers who are not already associated with their service. Be sure to check with your agency or FSE before you hire a new support worker or begin a shift with a new client/employer.*

[Test L.](#) | **Lauderdale, MN** [Connect with Me](#)

About Me: No information provided

Age range 30-39

Areas of Daily Living: Bathing; Bowel/Bladder Assistance; Companionship ...

Agency/Fiscal Support Entity Affiliation(s):

No information provided

Supporting age groups: No information provided

PLEASE NOTE: This worker has not completed at least one of the following: Required PCA Orientation, Background Study, and/or Affiliation with an Agency or Fiscal Support Entity (FSE)

Diagnoses: Cerebral Palsy; Cognitive Disabilities; Intellectual Disabilities ...

Years of experience: 4+

Last Logged In: 05/03/2019

Questions?

Thank you.

Direct Support Connect™
DirectSupportConnect.com

For more
information:
visit

DirectSupportConnect.com

Email Us | Chat with us Mon - Fri 9:00 am-4:00 pm

