

# MINNESOTA WORKFORCE STRATEGY CONSULTANTS

## MISSION

Develop innovative workforce solutions by aligning resources, facilitating collaboration, and leveraging expertise in targeted industry sectors to drive economic equity and growth.

## THE VALUE WE BRING

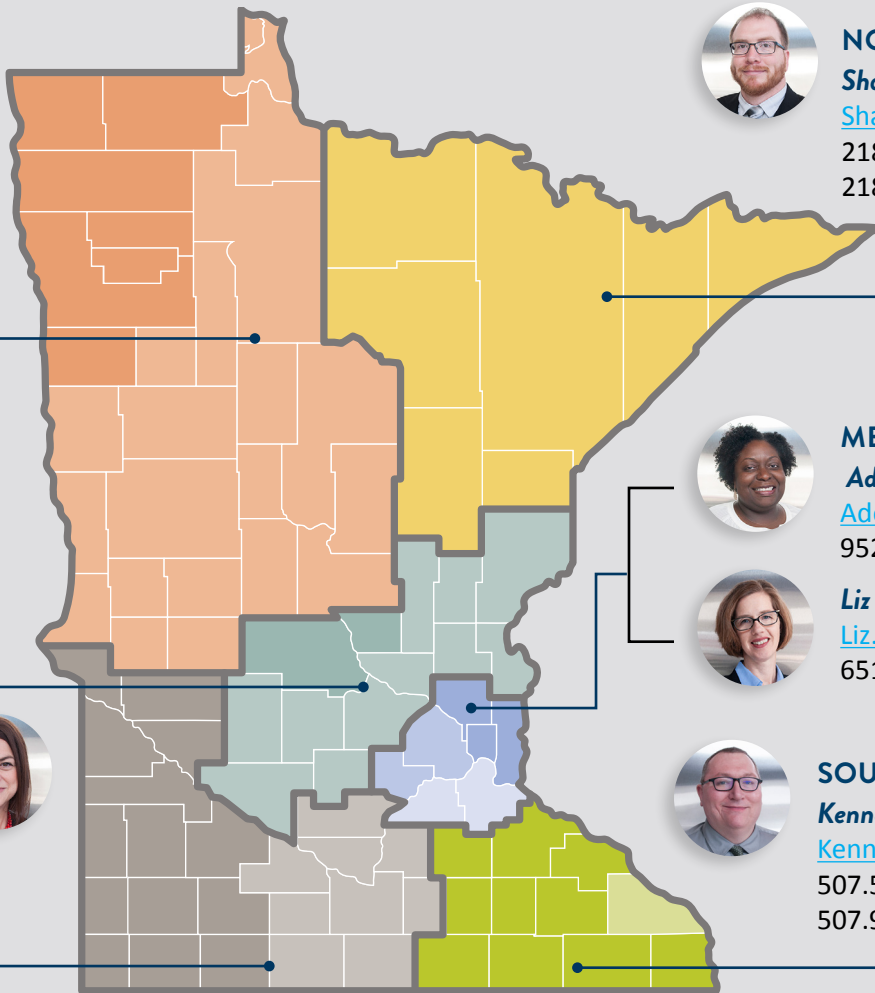
- > Assist key stakeholders in the successful implementation of regional plan
- > Leverage expertise in industry sector workforce development strategies
- > Connect key stakeholders to workforce development resources
- > Enhance regional economic prosperity through partnership with DEED's Business Development Specialists and Labor Market Analysts
- > Design tools and resources to support businesses in developing strategic workforce solutions that are relevant in today's dynamic and ever-changing environment.



## WORKFORCE STRATEGY CONSULTANTS



**NORTHWEST**  
**Chet Bodin**  
[Chet.Bodin@state.mn.us](mailto:Chet.Bodin@state.mn.us)  
218.333.8200 (w)



**NORTHEAST**  
**Shawn Herhusky**  
[Shawn.Herhusky@state.mn.us](mailto:Shawn.Herhusky@state.mn.us)  
218.349.1428 (c)  
218.302.8408 (w)



**CENTRAL**  
**Della Ludwig**  
[Della.Ludwig@state.mn.us](mailto:Della.Ludwig@state.mn.us)  
320.423.0121 (c)  
320.308.5364 (w)



**METRO REGION**  
**Adesewa Adesiji**  
[Adesewa.Adesiji@state.mn.us](mailto:Adesewa.Adesiji@state.mn.us)  
952.261.6942 (c)



**Liz Jennings**  
[Liz.Jennings@state.mn.us](mailto:Liz.Jennings@state.mn.us)  
651.259.7570 (w)



**SOUTHWEST & SOUTH CENTRAL**  
**Jessica Miller**  
[Jessica.Miller@state.mn.us](mailto:Jessica.Miller@state.mn.us)  
507.344.2610 (w)



**SOUTHEAST**  
**Kenneth L. Johnson**  
[Kenneth.L.Johnson@state.mn.us](mailto:Kenneth.L.Johnson@state.mn.us)  
507.517.0165 (c)  
507.923.2824 (w)