

MORA IS SHOVEL READY

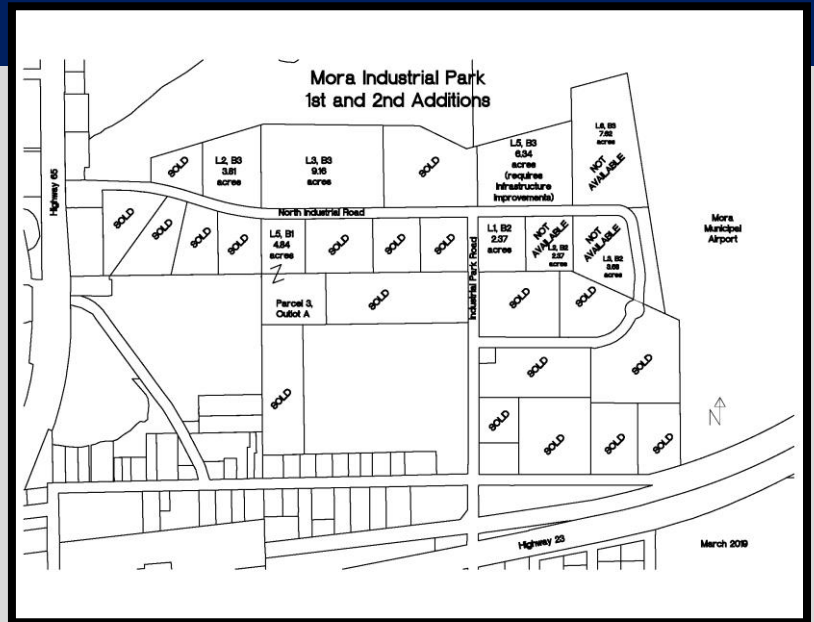
Mora Industrial Park 2nd Addition

Mora, Minnesota

A CERTIFIED DEVELOPMENT SITE READY FOR YOUR NEXT PROJECT!

Site Highlights:

- 32 acres certified as Shovel Ready by DEED
- Conveniently located 72 miles north of Minneapolis / St. Paul; 52 miles northeast of St. Cloud; and, 91 miles southwest of Duluth
- Direct access to Trunk Highways 65 and 23
- Adjacent to Mora Municipal Airport (JMR), featuring a 4,800 paved primary runway and turf crosswind runway
- All infrastructure in place
- Competitive electric rates
- Financial incentives available
- Industrial park located in a designated Opportunity Zone (census tract 27065480300)
- Zoned I-1 (Limited Industrial District) and I-2 (General Industrial District)
- Lots may be combined or split to suit individual needs
- Located in county seat with easy access to goods and services
- Training opportunities available at Pine Technical and Community College, Anoka-Ramsey Community College, and St. Cloud Technical Community College



For more information about the Mora Shovel Ready Site, contact:



Beth Thorp
Community Development Director
City of Mora
320-225-4807 | beth.thorp@cityofmora.com
www.ci.mora.mn.us



Heidi Steinmetz
Economic Development Director
County of Kanabec
320-209-5031 | heidi.steinmetz@co.kanabec.mn.us
www.kanabec-eda.org

