

MINNESOTA

2025 BUSINESS EXPANSION PROJECTS

Minnesota: Land of Business Expansion

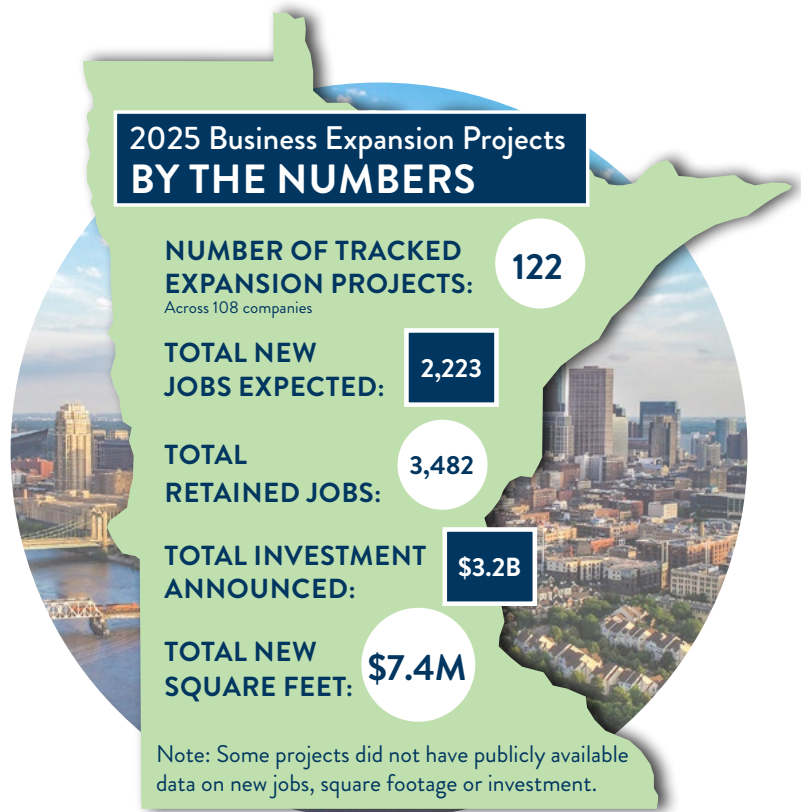
If you want your company to be a leader in life-sciences, manufacturing or innovation in almost any sector, you want to be in Minnesota.

With 122 expansion projects – creating or retaining approximately 5,700 jobs and investing \$3.2 billion in our state’s economy – Minnesota’s business ecosystem showed its strength in a big way in 2025.

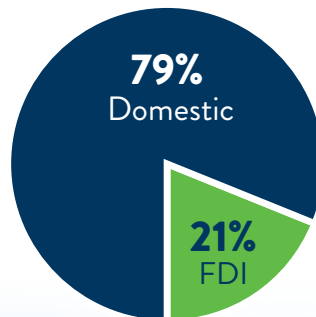
The Minnesota Advantage

Minnesota offers a powerful business advantage with a top-ranked economy, the #1 global health tech cluster, a highly skilled workforce, and a top business survival rate—supported by a strong innovation ecosystem, robust incentives, and expert guidance from DEED to ensure long-term success.

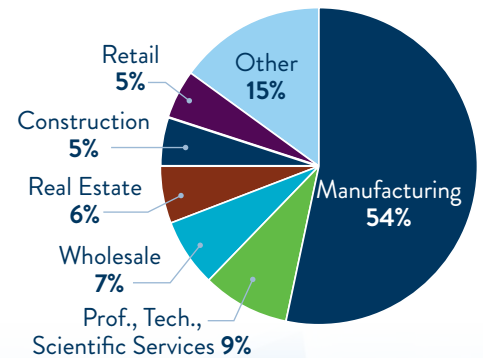
Thinking of expanding or relocating in 2026? Let DEED help you amplify your presence in Minnesota.



Domestic vs. Foreign Direct Investment (FDI) (by number of expansions)



Top Sectors (by number of expansions)



Venture Capital Investments

2024: \$1.7B across 148 deals
2025: \$1.1B across 166 deals



BUSINESS EXPANSION PROJECT HIGHLIGHTS

Boston Scientific

Headquarters: Marlborough, MA
Project Location: Maple Grove, MN
Industry: Medical Technology
Investment: \$139 million

Boston Scientific, a global leader in medical technology, has its largest workforce in Minnesota with 8,700 employees and major operations in Maple Grove and Arden Hills. The company is expanding its Maple Grove footprint with two new additions totaling nearly 84,000 square feet. The \$139 million project is expected to create approximately 440 new jobs. Supported by the Minnesota Investment Fund and the Job Creation Fund, these investments further strengthen Minnesota's position as a premier destination for medtech innovation and growth.



West Fraser

Headquarters: Vancouver, BC, Canada
Facility Location: Solway, MN
Industry: Manufacturing, Wood Products
Investment: \$137 million

West Fraser, one of the world's largest producers of renewable wood building products, operates over 50 facilities across North America and Europe and employs more than 10,000 people. At its Bemidji OSB mill in Solway, Minnesota, the company will invest \$137 million to renovate the facility and upgrade equipment, retaining 132 jobs at an average wage of \$37.11 per hour, supported by the Minnesota's Job Creation Fund. OSB (oriented strand board) is a cost-effective, engineered wood panel widely used in construction. Demonstrating its commitment to sustainability and community, West Fraser also partners with the Minnesota DNR to use a nearby pond for muskellunge fish rearing, reinforcing its dedication to environmental stewardship.



Beckman Coulter

Headquarters: Brea, CA
Facility location: Chaska, MN
Industry: Clinical Diagnostics and Life Science Research
Investment: \$50 million

Beckman Coulter Inc., a global leader in clinical diagnostics and life sciences, employs over 11,000 people worldwide and operates a major facility in Chaska, Minnesota. Founded in the 1930s and now part of Danaher Corporation, the company plans a \$50 million expansion in Chaska, including a 148,000-square-foot addition and \$3 million in new equipment. Supported by the Minnesota Investment Fund and the Job Creation Fund, the project will create 300 new full-time jobs at an average wage of \$32.46 per hour while maintaining 940 positions, reinforcing Beckman Coulter's commitment to innovation and growth in Minnesota.



Rolls Royce Solutions America

Headquarters: Friedrichshafen, Germany
Facility Location: Mankato, MN
Industry: Manufacturing, Machinery
Investment: \$35 million

Rolls Royce Solutions America, headquartered in Friedrichshafen, Germany, is investing \$35 million to expand its two facilities in Mankato, Minnesota, creating 128 new jobs and consolidating operations to boost production of mtu Series 4000 generator sets, which are in high demand from the growing data center industry. The expansion includes a 280,000-square-foot addition to its main Power Drive plant, the installation of new equipment, and the investment of \$4.5 million in its Lundin Drive site. DEED is supporting the company's Mankato expansion with a Job Creation Fund grant. The project will increase production capacity by more than 120% by 2026. Rolls Royce Solutions America's investment aligns with its strategic focus on power generation and the U.S. data center market, expected to see \$1 trillion in AI-related infrastructure spending in coming years.



Niron Magnetics, Inc.

Headquarters: Minneapolis, MN
Project Location: Sartell, MN
Industry: Magnet Technology
Investment: \$169.7 million

Niron Magnetics, Inc. will construct a new 190,000-square-foot facility in Sartell, Minnesota to produce up to 1,500 tons of rare earth-free permanent magnets annually in 2027. The total project cost is \$169.7 million and is anticipated to create 175 new jobs. DEED is supporting this project with funds from the Minnesota Forward Fund.



ALTER Technology

Headquarters: Hanover, Germany
Project Location: Plymouth, MN
Industry: Semiconductor Services
Investment: \$4.5 million

ALTER Technology has opened a new 14,000-square-foot semiconductor testing facility in Plymouth, Minnesota. The site includes a 4,000-square-foot Class 10,000 clean room and features advanced testing equipment for high-reliability microelectronics. The \$4.5 million project is supported by state funding through the Minnesota Investment Fund and Job Creation Fund and is expected to create 16 new jobs in the region. As Minnesota strengthens its role in the national semiconductor supply chain, ALTER's facility supports critical industries like aerospace, medical, and photonics.



BUSINESS EXPANSION ANNOUNCEMENTS SUMMARY

Minnesota saw strong business expansion activity in 2025, with 122 announced projects across all sectors. These expansions comprised of \$3.2 billion in capital investment, over 2,200 new jobs, and nearly 3,500 retained jobs, along with 7.4 million square feet of new development. Overall, the numbers signal continued confidence in the state's business climate.

2025 Business Expansion Announcements by Sector

All Sectors	Number of Expansions	Investment (\$, Millions)	New Jobs	Retained Jobs	New Square Feet (Thousands)
Life Sciences	14	1,704	626		1,306
Advanced Manufacturing	32	1,013	567	3,026	1,404
Technology	14	270	232		2,128
Food & Ag	18	116	146	233	1,201
Clean Tech	3	92	12	140	22
Other	41	44	640	83	1,318
Total	122	3,239	2,223	3,482	7,380

Top 25 Expansions by Capital Investment

Company	City	Investment (Millions)	New Jobs	Retained Jobs	New Square Feet (Thousands)
Allina Health	Minneapolis	\$1,000			500
Ecolab	Eagan	\$500	5	2,894	82
HealthPartners	Stillwater	\$400			400
North Wind	Rosemount	\$234	41		245
Daikin Applied Americas	Plymouth	\$163			71
Boston Scientific	Maple Grove	\$139	440		84
West Fraser US EWP	Solway	\$137		132	
BioMADE	Maple Grove	\$132	25		122
DEM-Con HZI BioEnergy (with Ramsey/Washington Recycling & Energy)	Shakopee	\$92	12	140	
Cambria	Randolph	\$80	70		61
General Mills	Golden Valley	\$54			35
Rolls Royce Solutions America	Mankato	\$35	128		280
Intricon	Arden Hills	\$30	20		
Beck's Hybrids	Olivia	\$28	4	20	96
Advanced Exhaust Solutions	Lakeville	\$22			168
Hansen & Co Woodworks	St Joseph	\$20			92
Kato Engineering, Nidec Power	North Mankato	\$19			120
Safety Rail	Chanhausen	\$13			152
Micro Control Company	Arden Hills	\$13			157
Zero Zone Refrigeration	Ramsey	\$11	55		58
Metropolitan Transportation Network MTN	Minneapolis	\$10	200		
JonnyPops	Plymouth	\$10			160
Stepp Manufacturing	North Branch	\$10	50		
So Good So You (So Good Brand)	Inver Grove Heights	\$9			
Louis Industries	Paynesville	\$8	15		42

Data on business expansions in selected sectors are gathered from sources such as media reports, public announcements and DEED programs. Data in announcements may be incomplete. Revisions to earlier announcements are generally not tracked. Businesses are not required to release expansion details.

Showcasing Minnesota's 2025 Venture Capital Investments

Minnesota companies raised \$1.1 billion across 166 venture capital deals in 2025. Healthcare and Information Technology led the momentum, accounting for 66% of all deals and 80% of total deal value, while four of the top five investment verticals fell within health and life sciences—including HealthTech and Digital Health. AI and Machine Learning companies also captured 21% of all fundraising. In total, 189 investors participated in deals involving Minnesota-headquartered companies, and the top five deals represented one-third of all capital raised.



\$1.1B

Total investment



166

Number of deals



Healthcare

Largest Sector of Deals

63% of funding | 49% of deal count



YoY Change

2025 vs. 2024:

Deal count: +12%
148; Deal value: -36%
(\$1,726M - \$1,105M)



Top 5 deals (by amount):

\$130M Duos (Minneapolis)

Personal assistance platform helping older adults age independently

\$72M 4C Medical (Maple Grove)

Minimally invasive treatment system for mitral regurgitation

\$52M Alpheus Medical (Chanhassen)

Drug-device combo activated by ultrasound to treat tumors via outpatient care

\$49M FLEX Vessel Prep (Plymouth)

Endovascular devices for simpler, faster, cost effective vessel preparation

\$45M 75F (Bloomington)

Smart building automation to optimize and save energy consumption



Top active sectors (funding + deals):

- **Healthcare Devices & Supplies:** \$398M (49 deals)
- **Healthcare Services:** \$209M (10 deals)
- **Software:** \$116M (24 deals)
- **Pharma & Biotech:** \$56M (12 deals)
- (Others of note: **Commercial Services:** \$22M / 16;
Consumer Non Durables: \$17M / 11)



Top investors (announced value):

- **Groove Capital** (Minneapolis): 9 investments | \$45M
- **Mairs & Power Venture Capital** (St. Paul): 3 investments | \$11M
- **Exit 156 Capital** (Sioux Falls): 3 investments | \$9M

DEED VC programs:

- **Direct Investment Venture Capital Program** — Invests in MN-based seed & early-stage startups across advanced manufacturing, ag/foodtech, climate tech, life sciences, software, technology.
- **Multi Fund Venture Capital Program** — Invests in MN-based VC funds targeting seed & early-stage MN startups in advanced manufacturing, agtech/foodtech, climate tech, life sciences, software, and technology sectors.

OVERVIEW



69
Projects



164M
Total
awarded



3,800+
New and
retained jobs



6,500
Workers
trained



\$1B
CAPEX

Total awarded across five programs:

- Minnesota Investment Fund (MIF)
- Minnesota Job Creation Fund (JCF)
- Minnesota Forward Fund (MFF)
- Minnesota 21st Century Fund
- Minnesota Jobs Skills Partnership (MJSP)

SPECIAL HIGHLIGHTS



Future Workforce: CHIPS Sector

Through the **Minnesota Forward Fund**, colleges and universities receive up to \$5M per project to train talent for semiconductor careers.



2025 Awards:

- **University of St. Thomas** – \$5.0M for AI-driven semiconductor hub.
- **Hennepin Technical College** – \$4.1M for microelectronics manufacturing pipeline.
- **University of Minnesota** – \$2.9M for advanced sensor and semiconductor technology center.



Advancing the Future MedTech Workforce

In 2025, DEED awarded an Advancing the Future MedTech Workforce grant of \$750,000 utilizing MJSP special projects funding. As the MedTech sector embraces the use of rapidly evolving Artificial Intelligence and other advanced technologies, this funding allows for educational institutions and businesses in the MedTech industry to work together to develop new training programs that will help prepare workers with the skills needed to adapt and effectively work alongside these technologies. The grant is expected to leverage \$1.3 million in business contributions and provide training to 351 workers.

YOUR PARTNER IN BUSINESS GROWTH

DEED takes a holistic approach to supporting business growth, offering a full spectrum of incentives and programs tailored to your unique needs. From financing solutions to workforce development, we're ready to serve. Our Business Development Team acts as your single point of contact—aligning resources, streamlining processes, and connecting you with the right tools to help your business expand, relocate, consolidate, or launch in Minnesota.



Financing Tools for Business Expansion

DEED offers targeted financing programs to support investment, expansion, and job creation:

- **Minnesota Job Creation Fund** – Incentives up to \$2 million for businesses meeting job creation and investment goals.
- **Minnesota Investment Fund** – Low interest loans supporting job growth in industrial, manufacturing, and technology sectors.
- **Minnesota Forward Fund** – Grants and loans for major capital investments that create high-quality jobs statewide.

Permitting Navigation

Minnesota Business First Stop (MBFS) helps businesses navigate state licensing, permitting, and regulatory requirements. Our interagency team streamlines permitting for complex projects—saving time and reducing uncertainty.

Workforce Development That Powers Success

DEED partners with employers, educators, and communities to build strong talent pipelines and ensure businesses have the skilled workers they need.

Training & Development Programs

Through the Minnesota Job Skills Partnership (MJSP):

- **Partnership Program** – Up to \$500K for customized training.
- **Pathways Program** – Up to \$500K for in-demand training for low-income workers.
- **Automation Training Incentive Program (ATIP)** – Up to \$35K for automation training for small Greater Minnesota manufacturers.
- **Job Training Incentive Program (JTIP)** – Up to \$200K for training new employees in Greater Minnesota.

Workforce Strategy Support

DEED's Workforce Strategy Consultants help employers plan for growth, strengthen talent pipelines, and address workforce challenges with data driven strategies and best practices.

Minnesota Is Ready for Your Growth

At DEED, our mission is to help businesses succeed—because Minnesota's economy grows when companies invest, expand, and hire here. Explore recent expansion highlights and learn more at: <https://mn.gov/deed/dobusiness/>

BUSINESS DEVELOPMENT TEAM

DEED's Business Development team assists companies at any point in the location decision-making process by devising solutions, engaging needed partners and aligning resources to match businesses with the appropriate tools to help them successfully locate and expand in Minnesota.

