

Collaboration between MN School Districts and EIDBI Providers

We've put together a guide in effort to help coordinate services and supports across service systems for children, youth, and young adults with autism spectrum disorder (ASD) and related conditions.

1

State and Federal Law

Special education supports and Medicaid-covered Early Intensive Developmental and Behavioral Intervention (EIDBI) services may be provided at the same time, depending on the needs of the student and local school district policy. **The school district has no financial responsibility for EIDBI services.**

2

Special Education

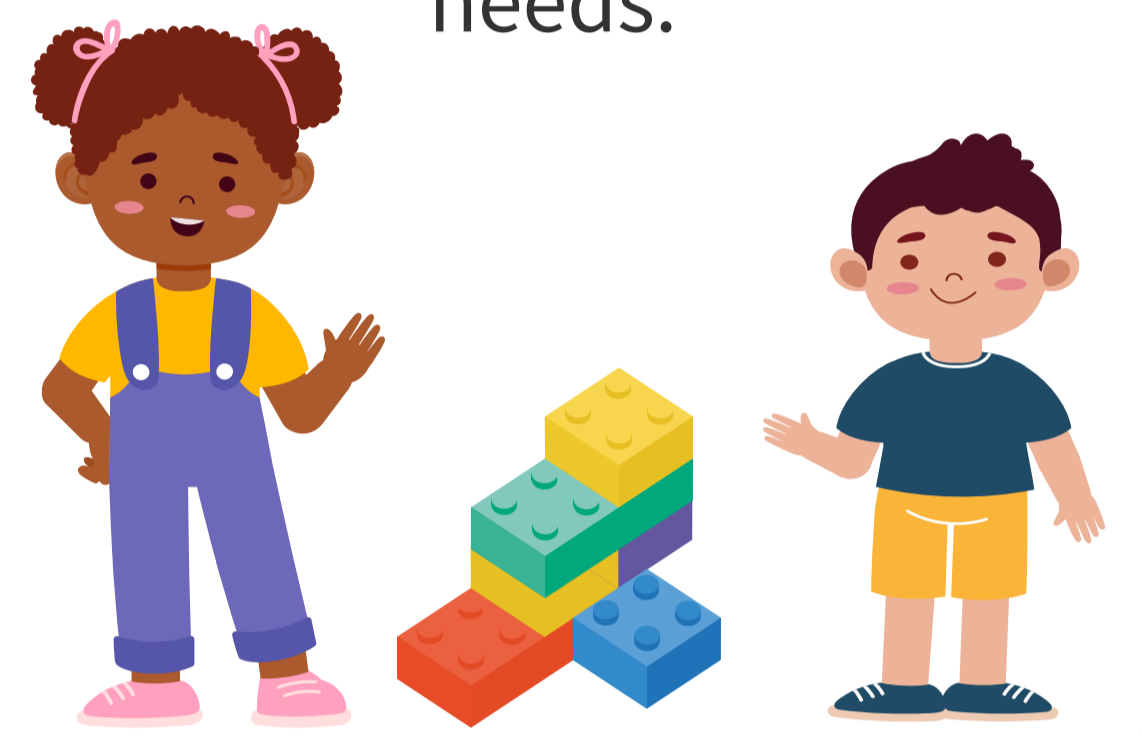
The federal Individuals with Disabilities Education Act (IDEA) law, governs how states provide early intervention special education and related services to children and youth with disabilities in public schools.



3

EIDBI Benefit

Under state and federal law, EIDBI is a MN Medicaid program that provides reimbursement for medically necessary intervention for children, youth, and young adults based on their individual needs.



4

By Design

The IDEA and EIDBI benefit are designed to work together to provide services and supports for school-age youth with ASD and related conditions.



5

Collaborate

The student, family, school staff, and EIDBI providers should work collaboratively to develop goals for both the student's individualized education program (IEP) and individualized treatment plan (ITP).



6

Funding & Authorization

- ✓ EIDBI will reimburse for medically necessary services delivered in a school setting.
- ✓ MN Medicaid will not authorize requests for EIDBI treatment to provide academic instruction to students.



7

Policy and Privacy

- ✓ Information must be kept and shared following the Health Insurance Portability and Accountability Act (HIPAA) and the Family Educational Rights and Privacy Act. Providers must obtain consent to disclose records when necessary.
- ✓ All EIDBI providers that provide services in the school setting should show proof of their Background checks and sign a confidentiality agreement.

8

EIDBI in Schools

- ✓ EIDBI in the school setting is a short-term service that should be aimed to help transition students to school.
- ✓ To meet IEP and ITP goals, providers can also support educators with trainings and observation and consultations.



9

Outcomes

Collaborative services mean the child is more likely to use their learned skills with different people and in new or different settings. These services will help students achieve greater independence and participation in family, school, and community life.

To learn more about collaboration efforts in Minnesota, visit mn.gov/autism/.

