



MN\_Hennepin County\_Fawkes Auto Complex\_0001  
West elevation of 1625 Hennepin Ave, looking east



MN\_Hennepin County\_Fawkes Auto Complex\_0002  
West elevation of 1629 Hennepin Ave, looking east.



MN\_Hennepin County\_Fawkes Auto Complex\_0003  
West facade of 1635 Hennepin Ave, looking east.



MN\_Hennepin County\_Fawkes Auto Complex\_0004  
West facade of 1635 Hennepin Ave, looking east.



MN\_Hennepin County\_Fawkes Auto Complex\_0005  
West facade of 1635 Hennepin Ave, looking at recessed front entrance.



MN\_Hennepin County\_Fawkes Auto Complex\_0006  
West facade of 1635 Hennepin Ave, looking at front entrance.



MN\_Hennepin County\_Fawkes Auto Complex\_0007  
West facade of 1635 Hennepin Ave, looking east.



MN\_Hennepin County\_Fawkes Auto Complex\_0008  
South elevation of 1635 Hennepin Ave, looking north.



MN\_Hennepin County\_Fawkes Auto Complex\_0009  
Southeast elevation of 1635 Hennepin Ave, looking north.



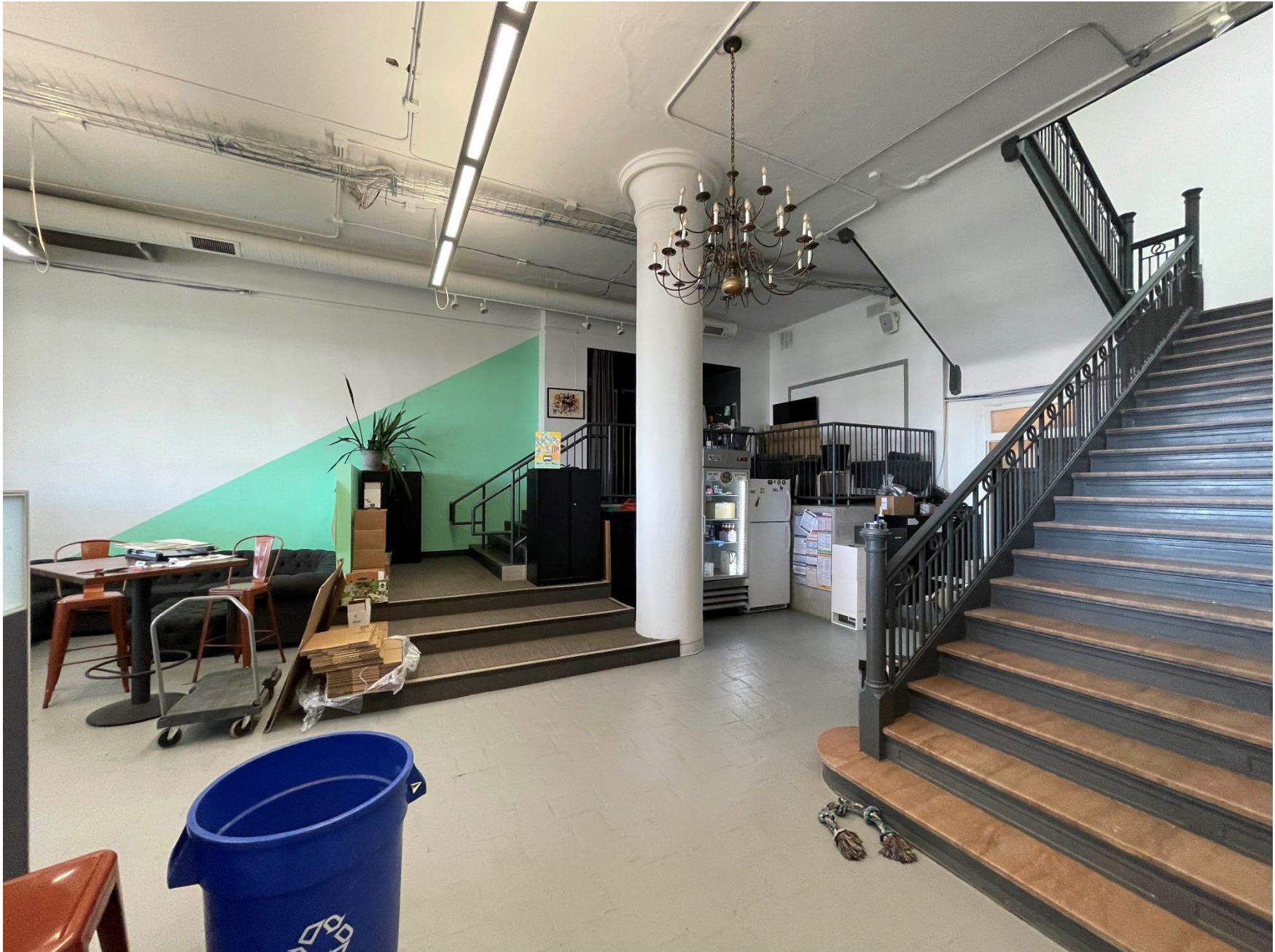
MN\_Hennepin County\_Fawkes Auto Complex\_0010  
East elevation of 1635 Hennepin Ave, looking west.



MN\_Hennepin County\_Fawkes Auto Complex\_0011  
Alley located behind 1621-635 Hennepin Ave, looking north.



MN\_Hennepin County\_Fawkes Auto Complex\_0012  
First floor of 1625 Hennepin Ave, looking at the grand staircase.



MN\_Hennepin County\_Fawkes Auto Complex\_0013  
First floor of 1625 Hennepin Ave, looking north.



MN\_Hennepin County\_Fawkes Auto Complex\_0014  
First floor of 1625 Hennepin Ave, looking west.



MN\_Hennepin County\_Fawkes Auto Complex\_0015

First floor of 1629 Hennepin Ave, looking north at interior access to adjacent building located at 1625 Hennepin Ave.



MN\_Hennepin County\_Fawkes Auto Complex\_0016





MN\_Hennepin County\_Fawkes Auto Complex\_0018

First floor of 1639 Hennepin Ave, looking at automotive elevator (photo 56 for interior of elevator).



MN\_Hennepin County\_Fawkes Auto Complex\_0019

19 of 32

First floor of 1639 Hennepin Ave, looking at circulation corridor. (From left to right: elevator, access to alley, interior access door to adjacent building located 1620 - 1628 Harmon Place.)





MN\_Hennepin County\_Fawkes Auto Complex\_0021

21 of 32

Third floor of 1635 Hennepin Ave, looking at interior access to adjacent building located at 1639 Hennepin Ave.





MN\_Hennepin County\_Fawkes Auto Complex\_0023

23 of 32

Basement level of 1629 Hennepin Ave, looking at the automotive elevator located in the center of the building. Originally used for automotive distribution.



MN\_Hennepin County\_Fawkes Auto Complex\_0024

24 of 32

Basement level of 1629 Hennepin Ave, looking at the automotive elevator located in the center of the building. Originally used for automotive distribution.



MN\_Hennepin County\_Fawkes Auto Complex\_0025

Northeast corner elevation of 1625 Hennepin Ave, photo taken from alley.



MN\_Hennepin County\_Fawkes Auto Complex\_0026

26 of 32

East elevation of 1629 Hennepin Ave, photo taken from alley.



MN\_Hennepin County\_Fawkes Auto Complex\_0027

East elevation of 1635 Hennepin Ave, photo taken from alley. Photo includes access to the dead-end alley (left) located behind 1635 Hennepin Ave.



MN\_Hennepin County\_Fawkes Auto Complex\_0028

28 of 32

North elevation of 1635 Hennepin Ave e, photo taken from within the dead-end alley behind 1635 Hennepin Ave, looking south.



MN\_Hennepin County\_Fawkes Auto Complex\_0029

East elevation of 1621 Hennepin, photo taken from alley.



MN\_Hennepin County\_Fawkes Auto Complex\_0030

30 of 32

West elevation of 1621 Hennepin Ave, looking east.





MN\_Hennepin County\_Fawkes Auto Complex\_0032

32 of 32

Second Floor of 1635 Hennepin Ave, looking east.