

# **Grong Lutheran Church**

Rollag, Parke Township, Clay County

Laural Fritz and Tamara Halverson

Pigeon Consulting



# State Historic Preservation Office





# State Historic Preservation Office





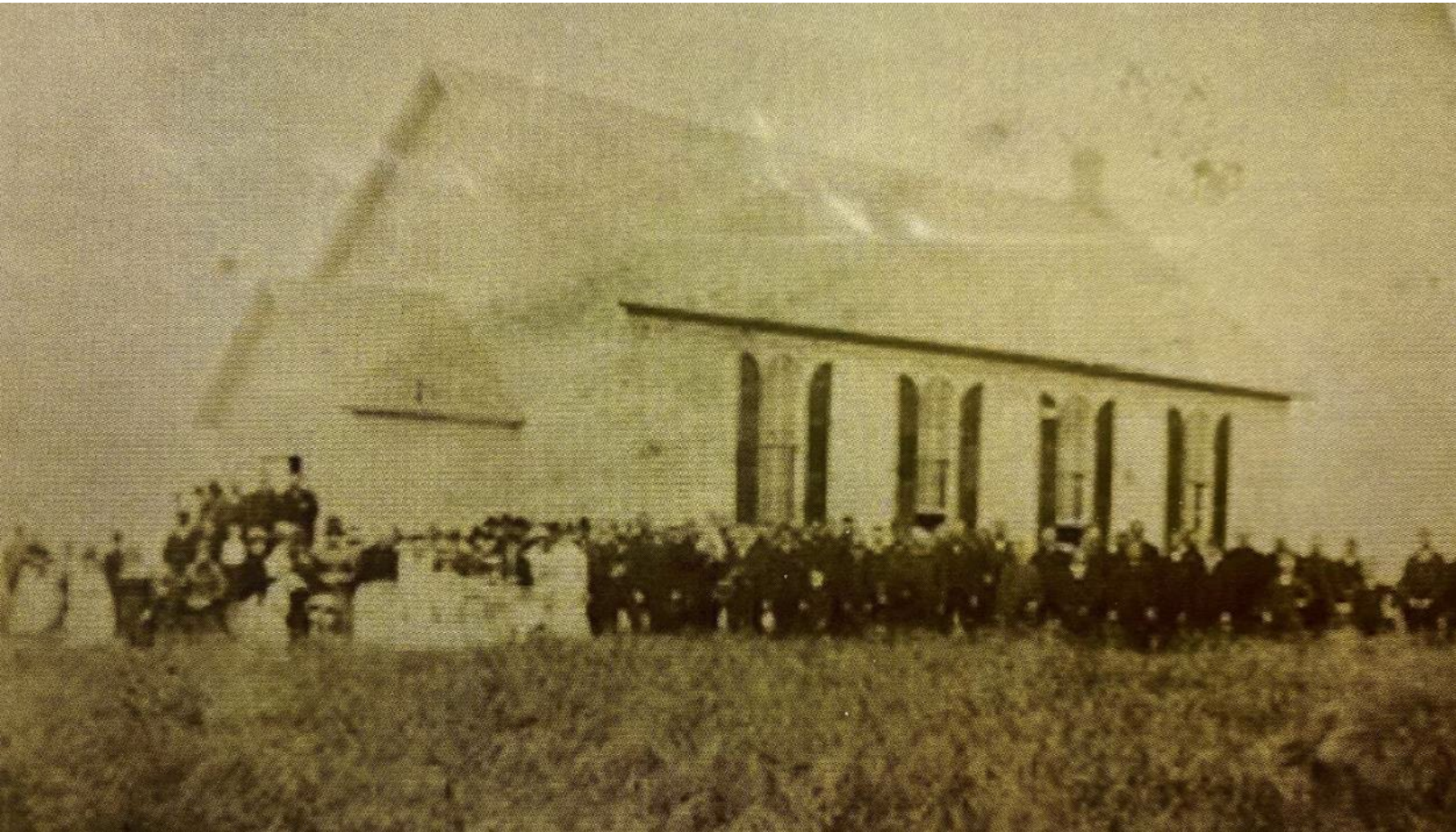
# State Historic Preservation Office





# State Historic Preservation Office

ca.1892

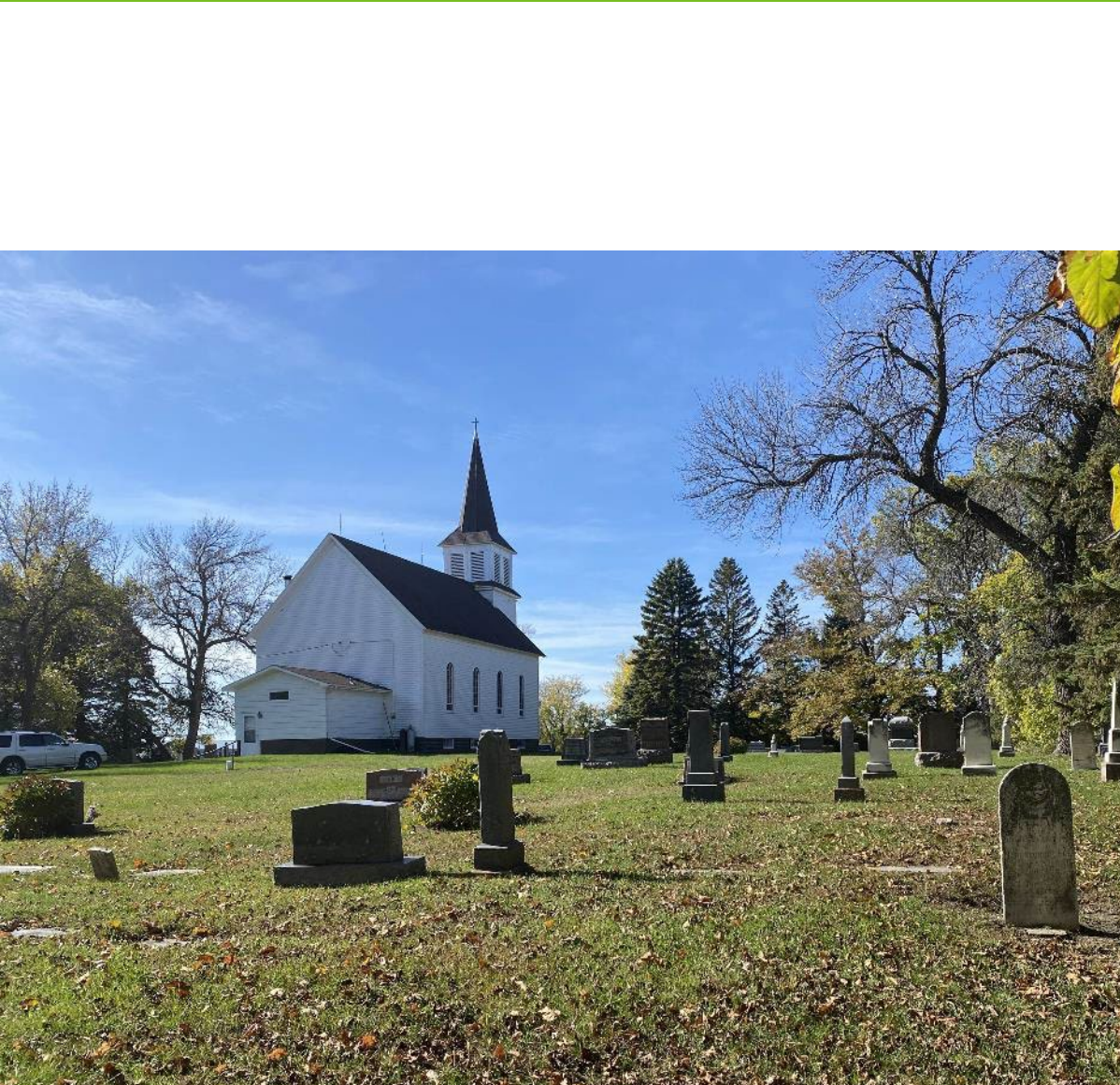


c. 1881-1892





# State Historic Preservation Office





# State Historic Preservation Office



1950



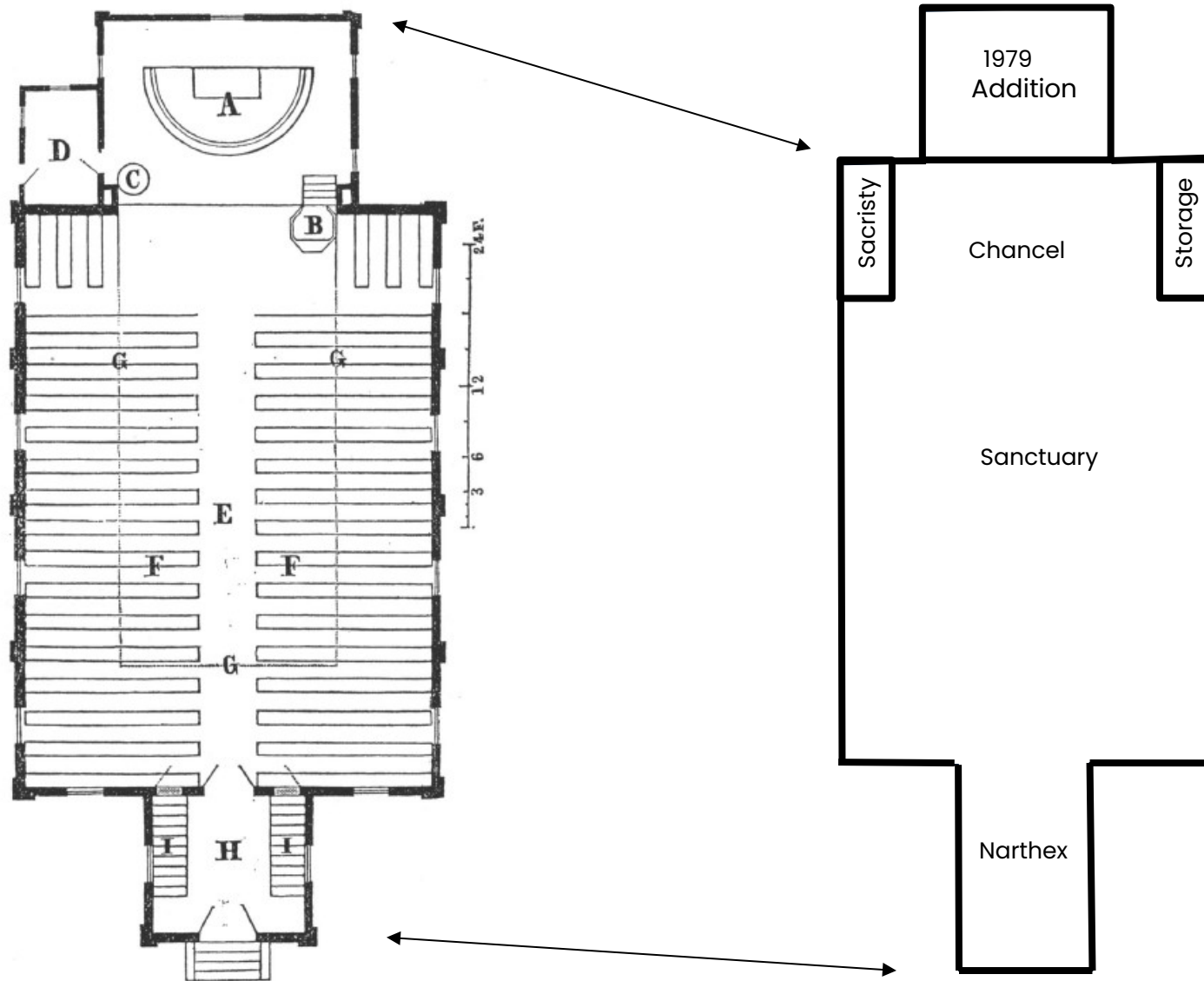


# State Historic Preservation Office





# State Historic Preservation Office



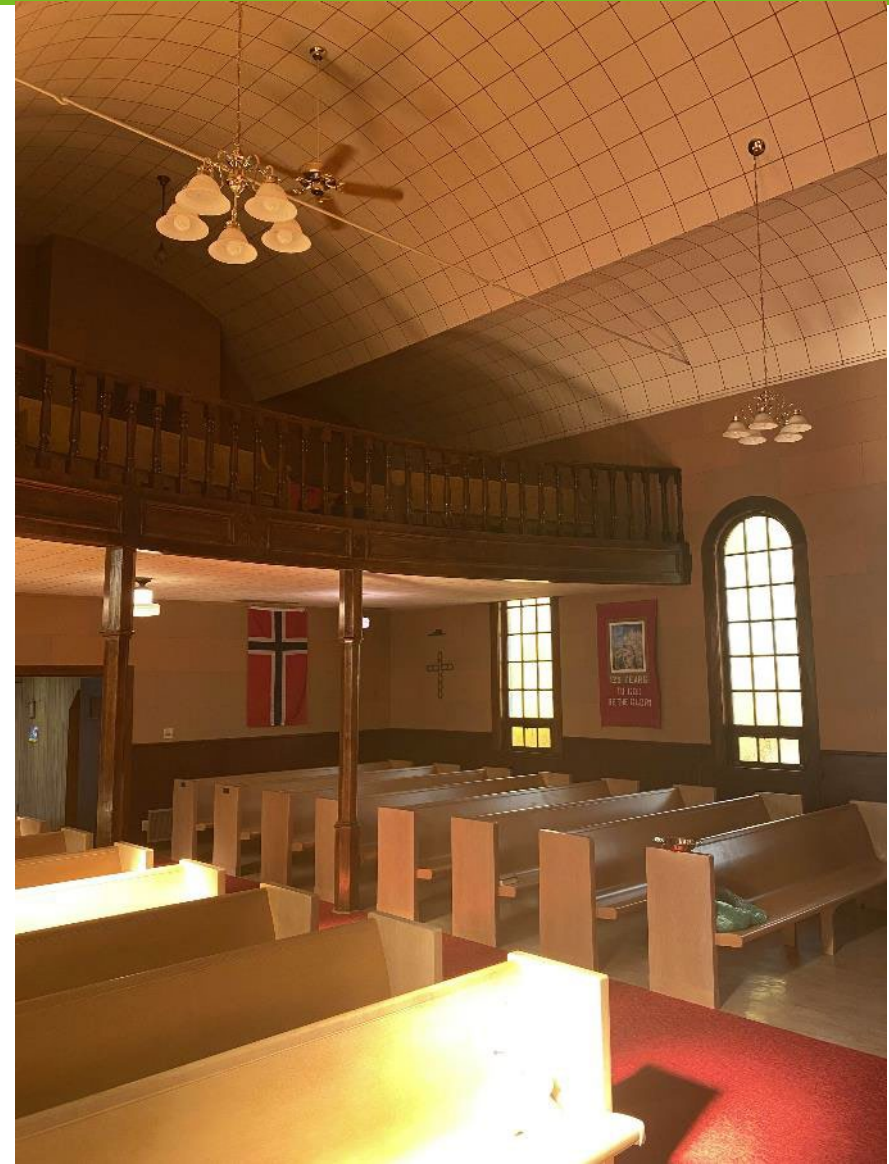


# State Historic Preservation Office





# State Historic Preservation Office





# State Historic Preservation Office



Historical and Cultural Society of Clay County

ca. 1900-1910

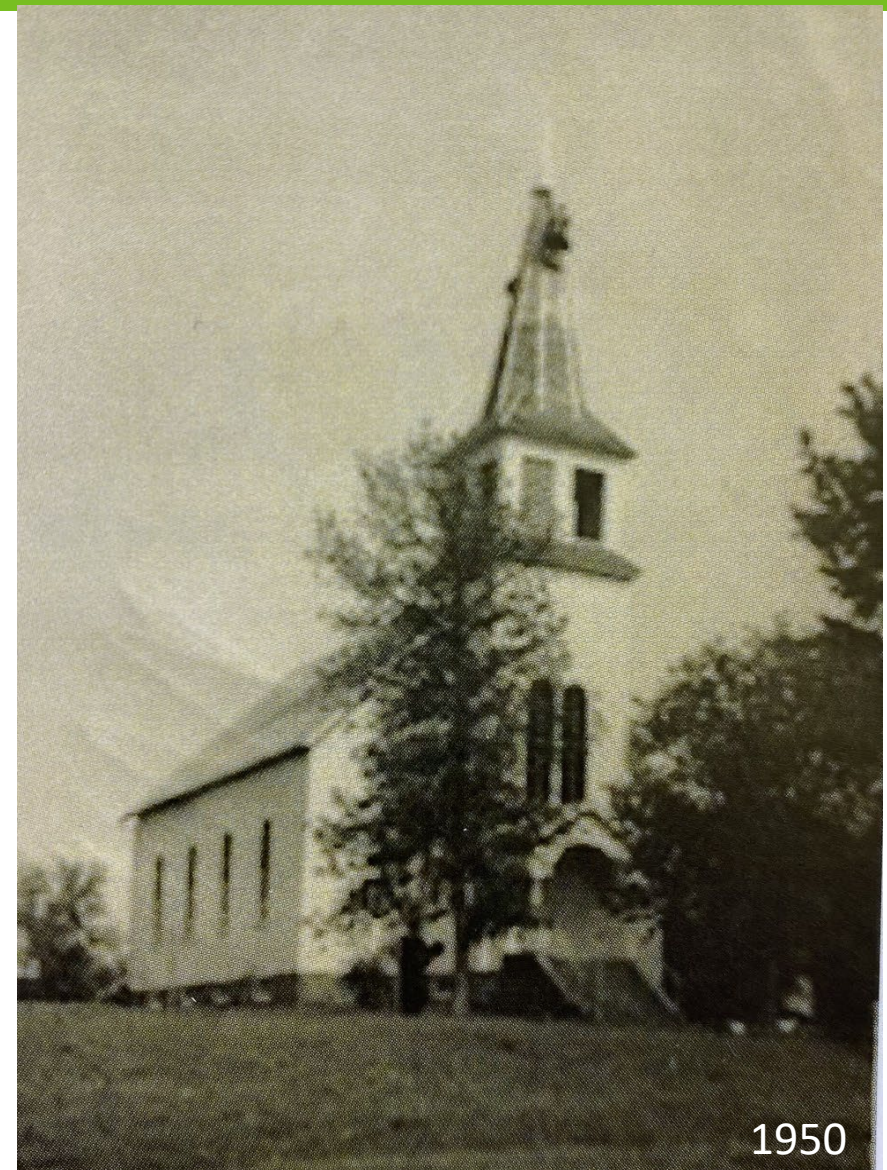


# State Historic Preservation Office

- Period of Significance: 1882 and 1892
- Level of Significance: Local
- National Register Criterion: C
- Areas of Significance: Architecture
- Criteria Consideration: A – Religions Properties



# State Historic Preservation Office





# State Historic Preservation Office



# **Le Sueur Public School**

Le Sueur, Le Sueur County

Lauren Anderson and Shannon Storey

New History

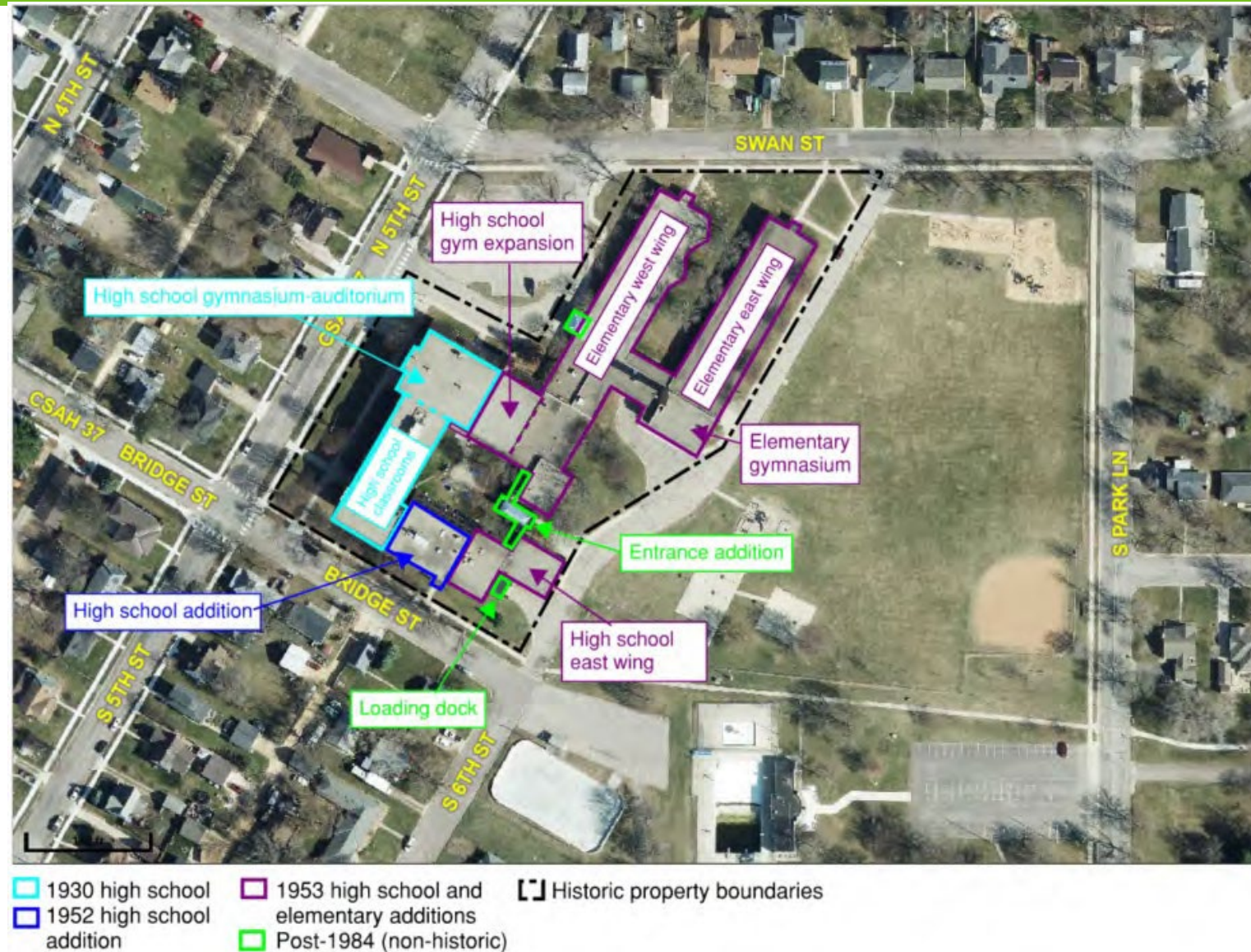


# State Historic Preservation Office





# State Historic Preservation Office





# State Historic Preservation Office





# State Historic Preservation Office





# State Historic Preservation Office





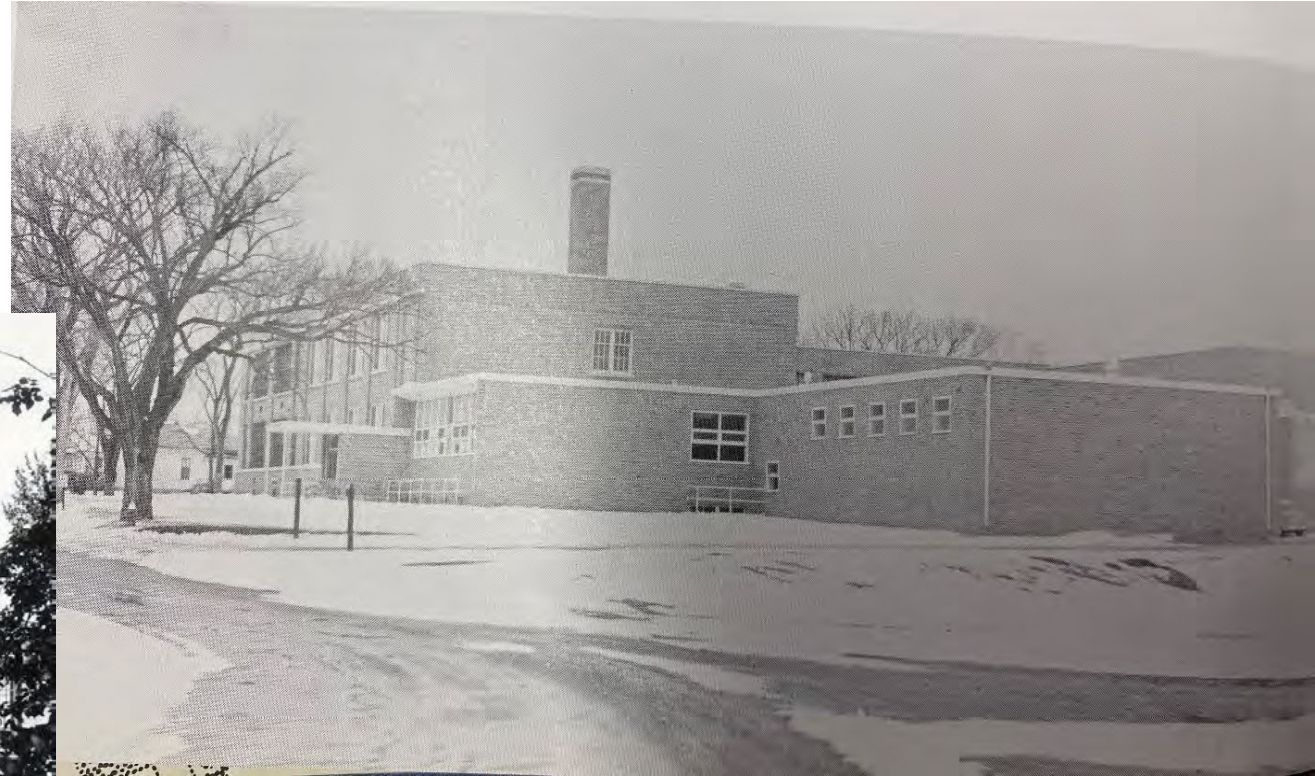
# State Historic Preservation Office





# State Historic Preservation Office

c. 1941



1955



# State Historic Preservation Office





# State Historic Preservation Office



1953

1953

Elementary Principal

## KINDERGARTEN ACTIVITIES





# State Historic Preservation Office





# State Historic Preservation Office





# State Historic Preservation Office

1953





# State Historic Preservation Office





# State Historic Preservation Office





# State Historic Preservation Office





# State Historic Preservation Office

- Period of Significance: 1930-1968
- Level of Significance: Local
- National Register Criterion: A
- Area of Significance: Education



# State Historic Preservation Office





# State Historic Preservation Office



# **Aaron Carlson Company Factory**

Minneapolis, Hennepin County



# State Historic Preservation Office





# State Historic Preservation Office

2025



2019



## MAP OF OBSERVED STRUCTURAL DAMAGE FROM FIRE ON 9/7/2025

**Aaron Carlson Sash and Deer Company Development Diagram**

Produced by PPH based on Southern Film Insurance maps, building permits, historic newspapers and aerial photographs

**Key**

- New construction
- Existing building
- Demolished building
- This building completed
- Public library

**Map Labels:**

- 1000
- 1008
- 1910
- 1909
- 1907
- 1905
- 1904
- 1903
- 1902
- 1901
- 1900
- 1899
- 1898
- 1897
- 1896
- 1895
- 1894
- 1893
- 1892
- 1891
- 1890
- 1889
- 1888
- 1887
- 1886
- 1885
- 1884
- 1883
- 1882
- 1881
- 1880
- 1879
- 1878
- 1877
- 1876
- 1875
- 1874
- 1873
- 1872
- 1871
- 1870
- 1869
- 1868
- 1867
- 1866
- 1865
- 1864
- 1863
- 1862
- 1861
- 1860
- 1859
- 1858
- 1857
- 1856
- 1855
- 1854
- 1853
- 1852
- 1851
- 1850
- 1849
- 1848
- 1847
- 1846
- 1845
- 1844
- 1843
- 1842
- 1841
- 1840
- 1839
- 1838
- 1837
- 1836
- 1835
- 1834
- 1833
- 1832
- 1831
- 1830
- 1829
- 1828
- 1827
- 1826
- 1825
- 1824
- 1823
- 1822
- 1821
- 1820
- 1819
- 1818
- 1817
- 1816
- 1815
- 1814
- 1813
- 1812
- 1811
- 1810
- 1809
- 1808
- 1807
- 1806
- 1805
- 1804
- 1803
- 1802
- 1801
- 1800
- 1799
- 1798
- 1797
- 1796
- 1795
- 1794
- 1793
- 1792
- 1791
- 1790
- 1789
- 1788
- 1787
- 1786
- 1785
- 1784
- 1783
- 1782
- 1781
- 1780
- 1779
- 1778
- 1777
- 1776
- 1775
- 1774
- 1773
- 1772
- 1771
- 1770
- 1769
- 1768
- 1767
- 1766
- 1765
- 1764
- 1763
- 1762
- 1761
- 1760
- 1759
- 1758
- 1757
- 1756
- 1755
- 1754
- 1753
- 1752
- 1751
- 1750
- 1749
- 1748
- 1747
- 1746
- 1745
- 1744
- 1743
- 1742
- 1741
- 1740
- 1739
- 1738
- 1737
- 1736
- 1735
- 1734
- 1733
- 1732
- 1731
- 1730
- 1729
- 1728
- 1727
- 1726
- 1725
- 1724
- 1723
- 1722
- 1721
- 1720
- 1719
- 1718
- 1717
- 1716
- 1715
- 1714
- 1713
- 1712
- 1711
- 1710
- 1709
- 1708
- 1707
- 1706
- 1705
- 1704
- 1703
- 1702
- 1701
- 1700
- 1699
- 1698
- 1697
- 1696
- 1695
- 1694
- 1693
- 1692
- 1691
- 1690
- 1689
- 1688
- 1687
- 1686
- 1685
- 1684
- 1683
- 1682
- 1681
- 1680
- 1679
- 1678
- 1677
- 1676
- 1675
- 1674
- 1673
- 1672
- 1671
- 1670
- 1669
- 1668
- 1667
- 1666
- 1665
- 1664
- 1663
- 1662
- 1661
- 1660
- 1659
- 1658
- 1657
- 1656
- 1655
- 1654
- 1653
- 1652
- 1651
- 1650
- 1649
- 1648
- 1647
- 1646
- 1645
- 1644
- 1643
- 1642
- 1641
- 1640
- 1639
- 1638
- 1637
- 1636
- 1635
- 1634
- 1633
- 1632
- 1631
- 1630
- 1629
- 1628
- 1627
- 1626
- 1625
- 1624
- 1623
- 1622
- 1621
- 1620
- 1619
- 1618
- 1617
- 1616
- 1615
- 1614
- 1613
- 1612
- 1611
- 1610
- 1609
- 1608
- 1607
- 1606
- 1605
- 1604
- 1603
- 1602
- 1601
- 1600
- 1599
- 1598
- 1597
- 1596
- 1595
- 1594
- 1593
- 1592
- 1591
- 1590
- 1589
- 1588
- 1587
- 1586
- 1585
- 1584
- 1583
- 1582
- 1581
- 1580
- 1579
- 1578
- 1577
- 1576
- 1575
- 1574
- 1573
- 1572
- 1571
- 1570

**Aaron Carlson Sash and Door Company  
Development Diagram\***  
Produced by PVN based on Sanborn Fire Insurance  
maps, building permits, historic newspapers, and  
aerial photographs




**Key**


-  New construction
-  Existing building
-  Unbuilt building
-  Year building completed
-  Railroad line

 True North

\*Source: Aaron Carlson Sash and Door Company

AREA HATCHED IN  
BLUE ARE  
REMAINING  
STRUCTURES.

 TOTAL OR SUBSTANTIAL LOSS OF STRUCTURE - LIMITED STRUCTURAL ELEMENTS REMAIN AND ARE UNSUPPORTED.  
 DAMAGED STRUCTURE OR STRUCTURE ADJACENT TO AREA WITH DAMAGE  
 LIMITED OR NO VISIBLE DAMAGE OF STRUCTURE

 MASONRY WALL LEFT UNSUPPORTED

AREA HATCHED IN  
RED ARE BURNED  
REMAINS -  
CURRENTLY  
CONSOLIDATED  
RUBBLE- NOT  
SALVAGEABLE

MODERNISMITT ARCHITECTURE, LLC  
1220 TYLER STREET NW, SUITE 200  
MINNEAPOLIS, MN 55412  
(P) 612.216.4191  
(E) INFO@MODERNISMITT.COM

1505 CENTRAL AVE  
NE,  
MINNEAPOLIS, MN

No.	Description	Date
-----	-------------	------

**NOT FOR  
CONSTRUCTION**

© 2010 Pearson Education, Inc.

EXISTING  
OVERALL  
PLANS

**X201**

1 LEVEL 1 - OVERALL EXISTING PLAN  
X201 3/64" = 1'-0"

