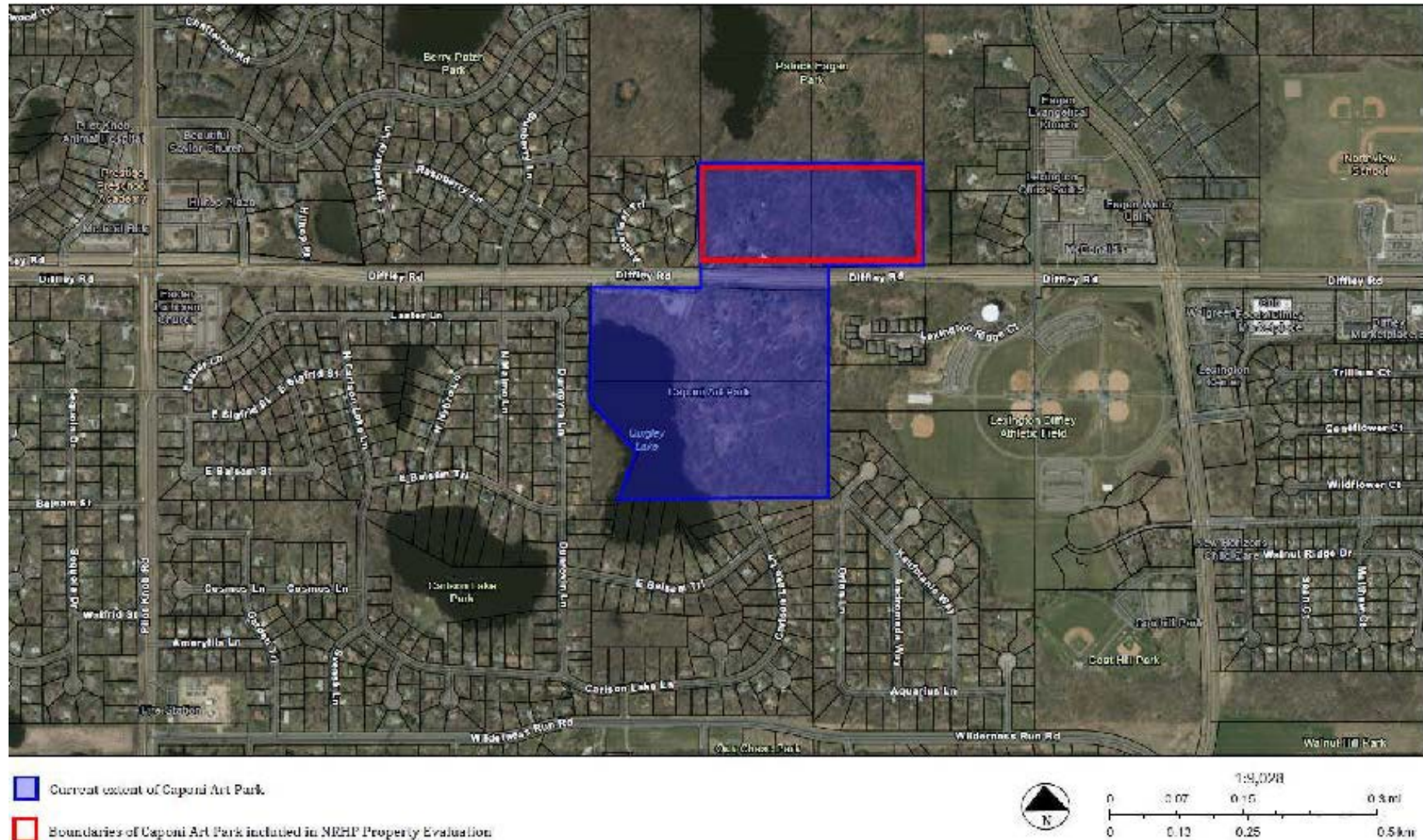


**Caponi Art Park**  
Eagan, Dakota County

Lauren Anderson

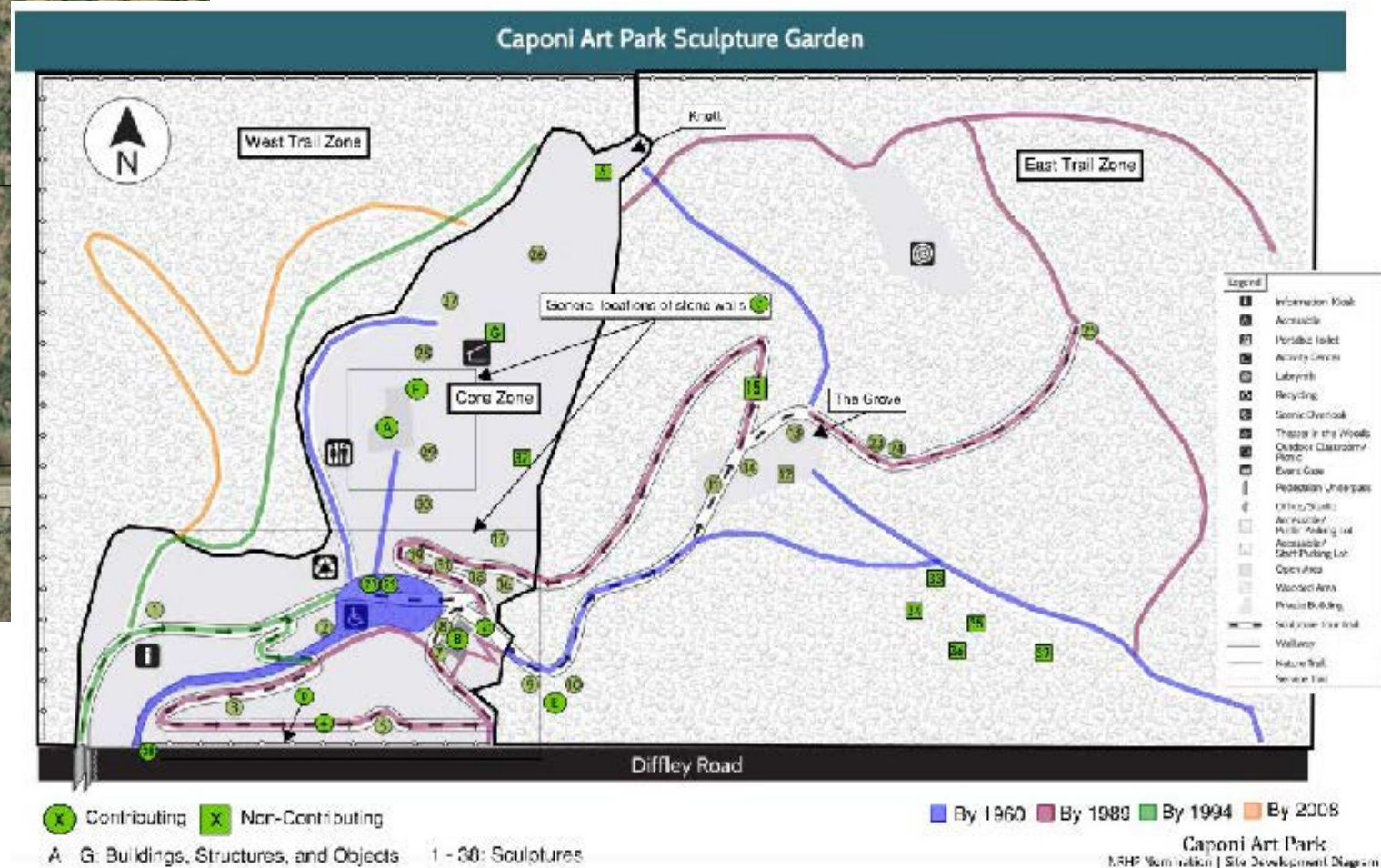
New History

# State Historic Preservation Office





# State Historic Preservation Office





# State Historic Preservation Office



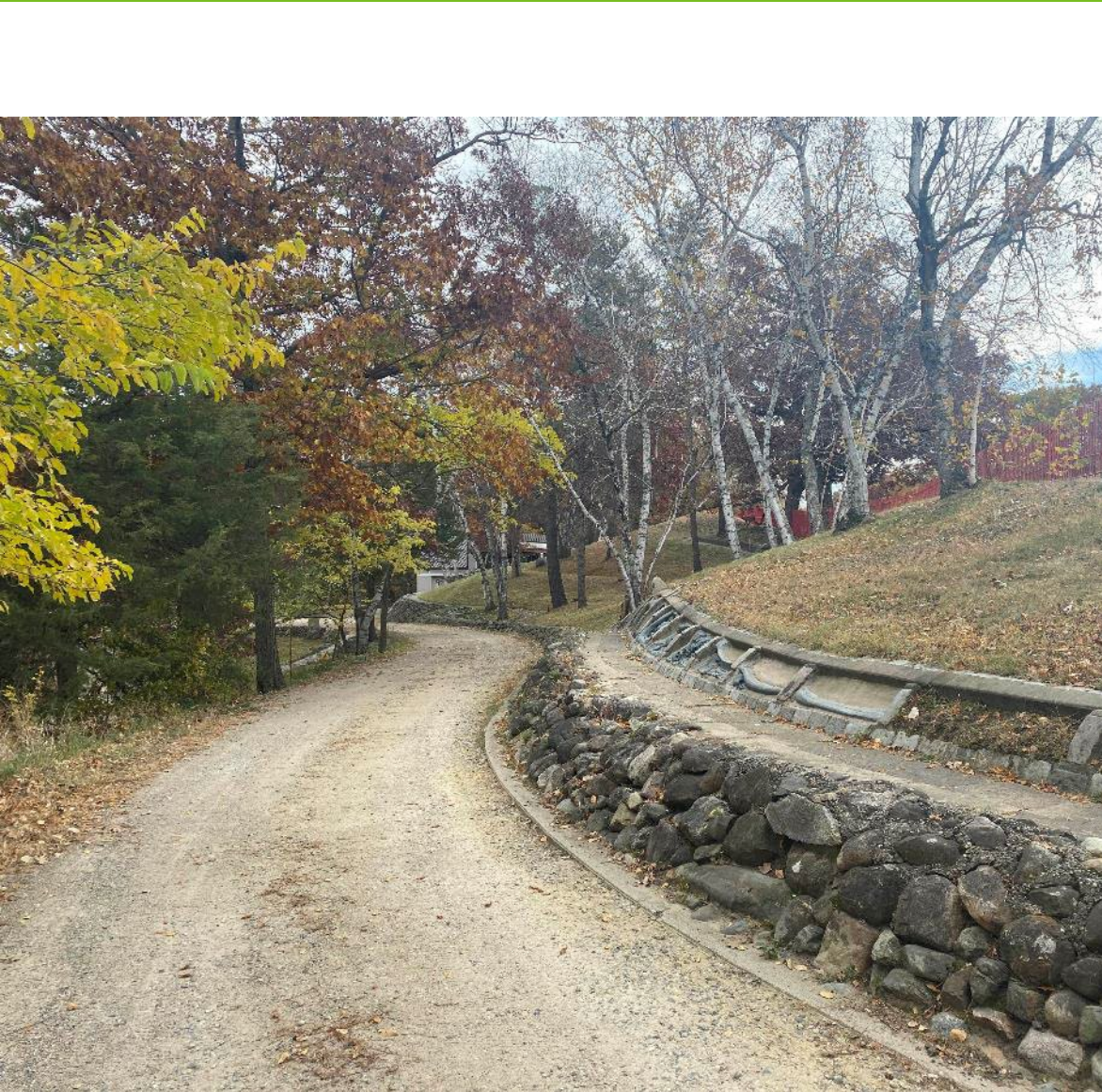


# State Historic Preservation Office





# State Historic Preservation Office

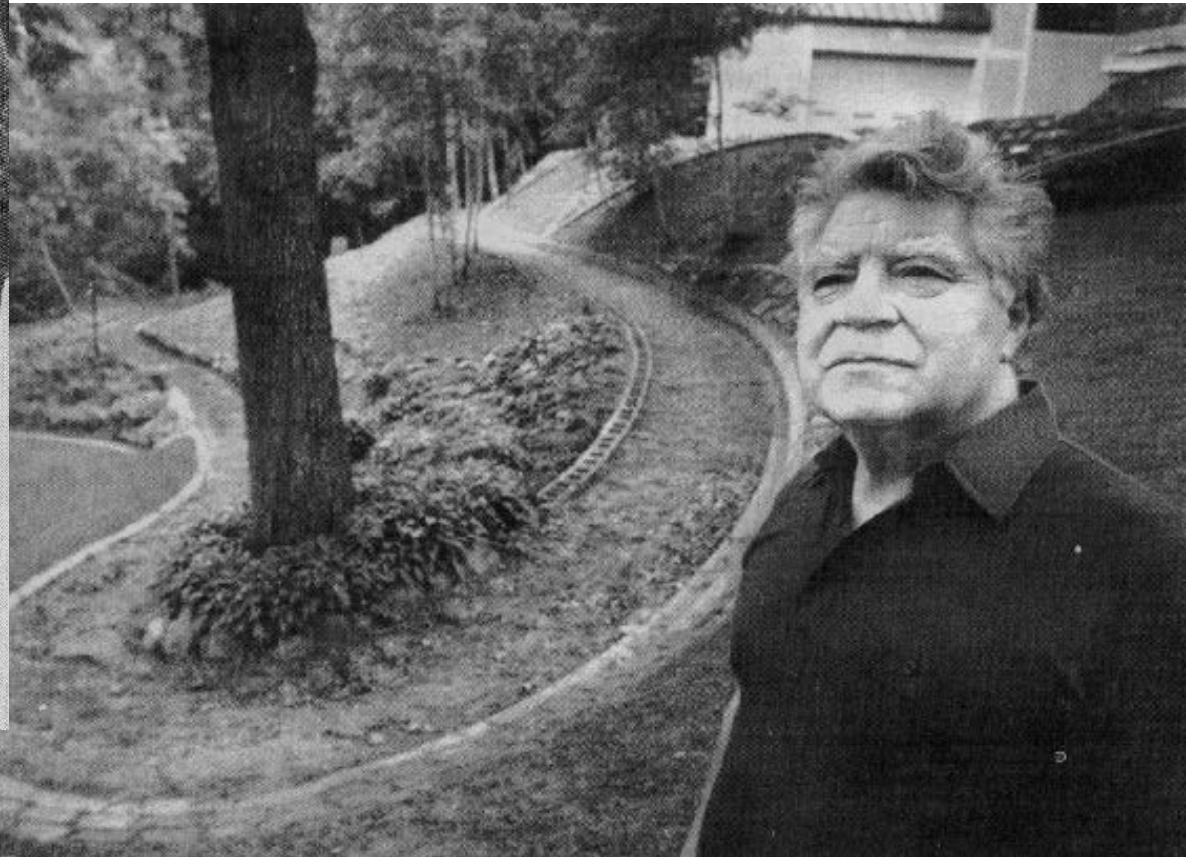




# State Historic Preservation Office



1972



1990

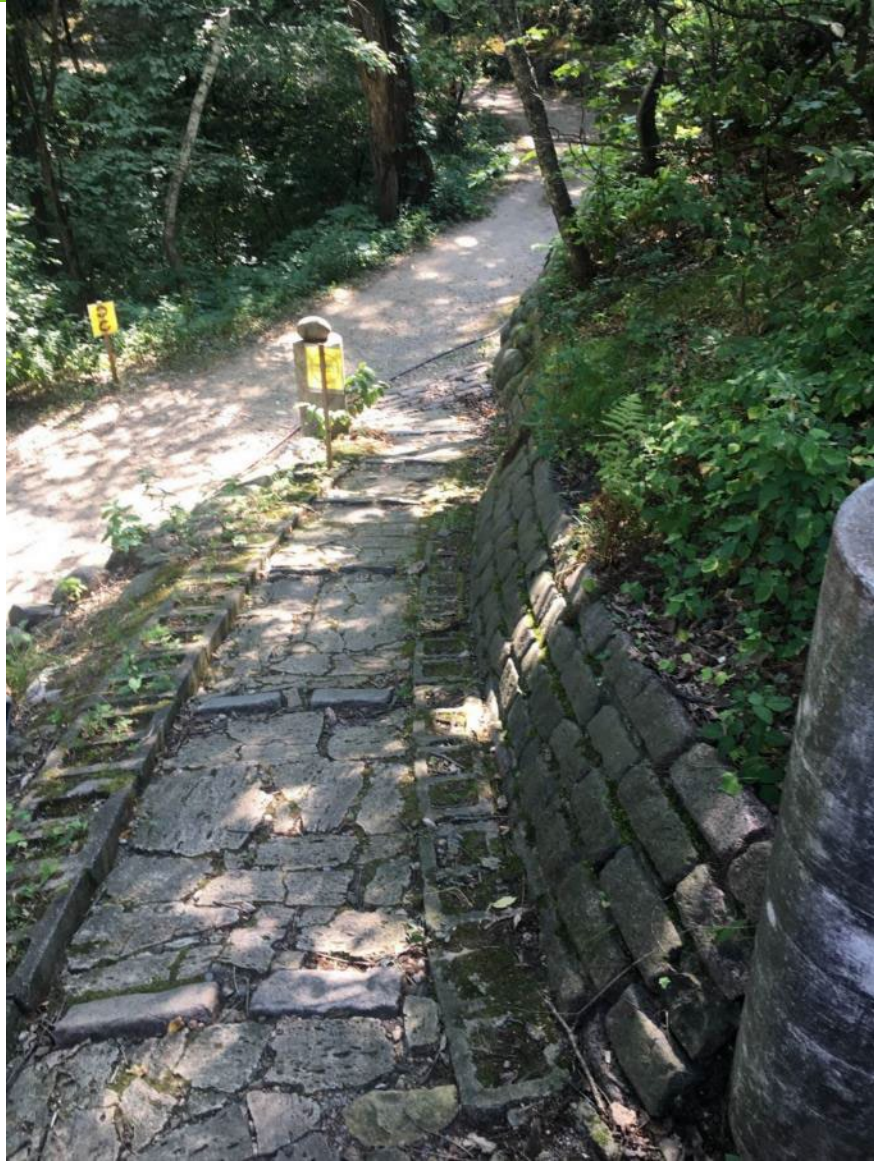


# State Historic Preservation Office





# State Historic Preservation Office





# State Historic Preservation Office

date unknown



1972



# State Historic Preservation Office





# State Historic Preservation Office





# State Historic Preservation Office



1957



# State Historic Preservation Office





# State Historic Preservation Office





# State Historic Preservation Office

- Period of Significance: 1949-1994
- Level of Significance: Local
- National Register Criteria: B and C
- Areas of Significance: Art & Landscape Architecture
- Criteria Consideration: G



# State Historic Preservation Office

1990





# State Historic Preservation Office



# **Frederick Martin Hotel**

Moorhead, Clay County

Laurel Fritz and Tamara Halvorsen

Pigeon Consulting



# State Historic Preservation Office





# State Historic Preservation Office

c. 1960



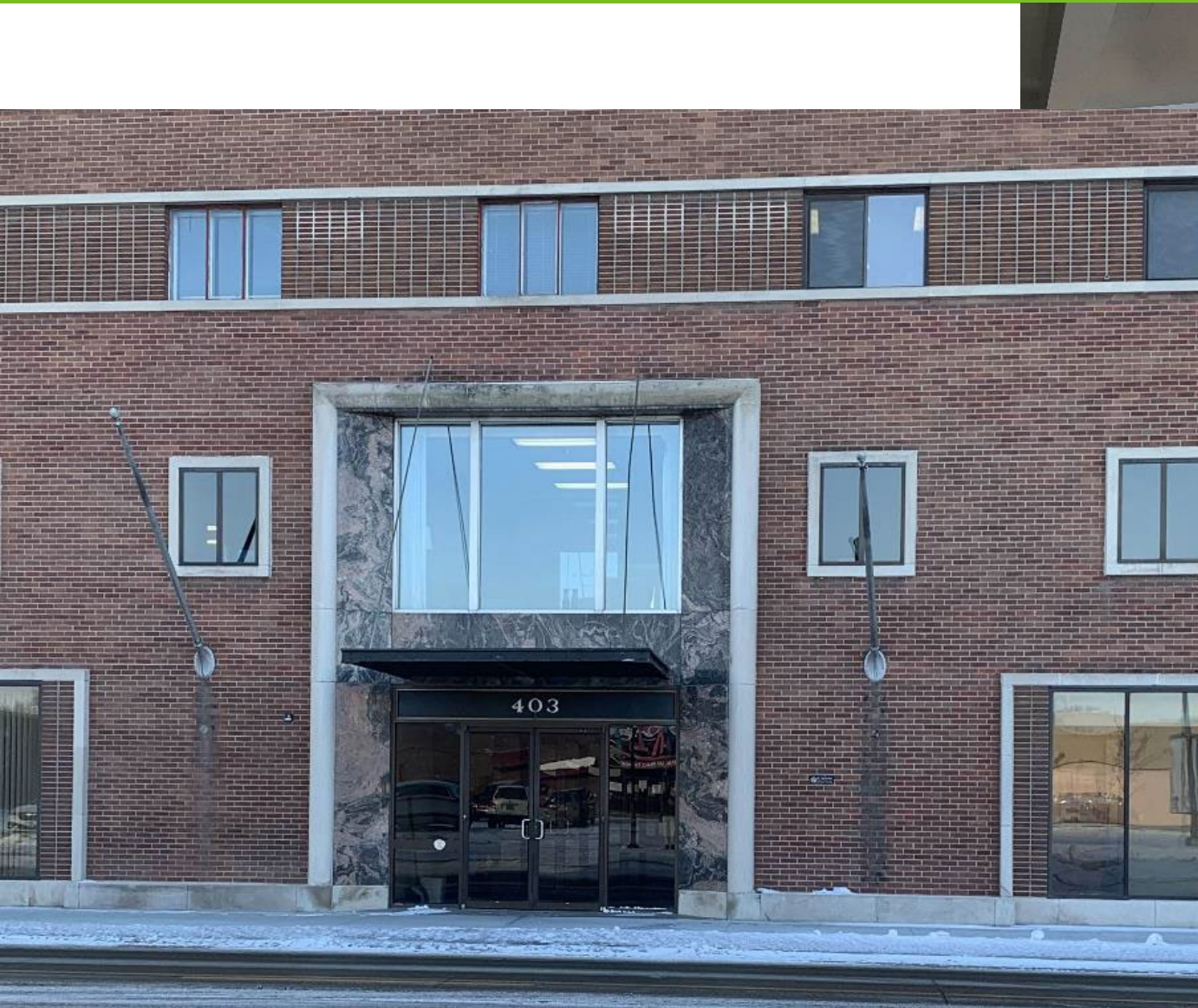


# State Historic Preservation Office





# State Historic Preservation Office





# State Historic Preservation Office



1950



1950



# State Historic Preservation Office





# State Historic Preservation Office





# State Historic Preservation Office





# State Historic Preservation Office





# State Historic Preservation Office





# State Historic Preservation Office

- Period of Significance: 1950
- Level of Significance: Local
- National Register Criterion: C
- Area of Significance: Architecture



# State Historic Preservation Office



1950





# State Historic Preservation Office

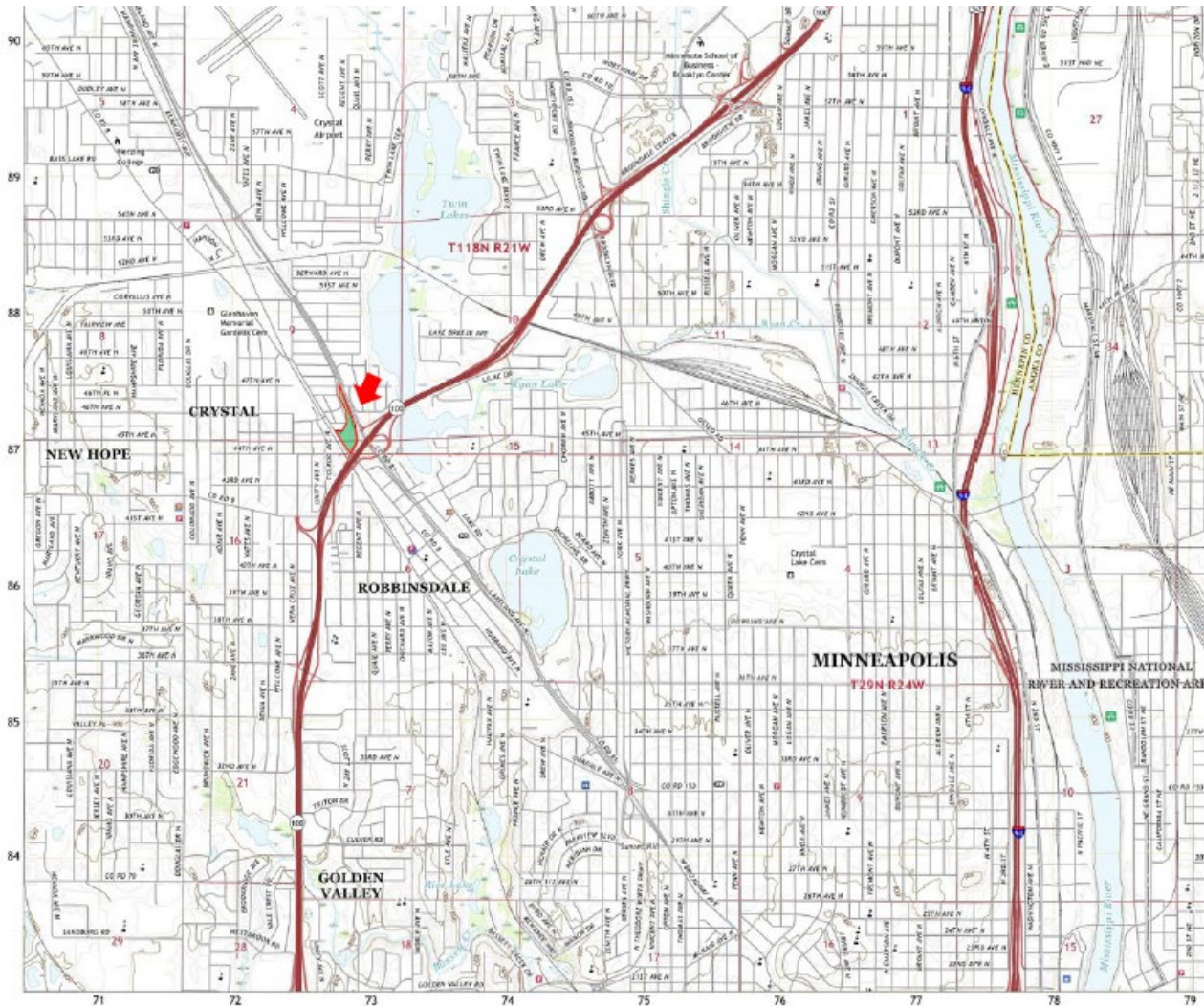


**Graeser Roadside Parking Area**  
Robbinsdale, Hennepin County

Carole Zellie,  
Landscape Research, LLC

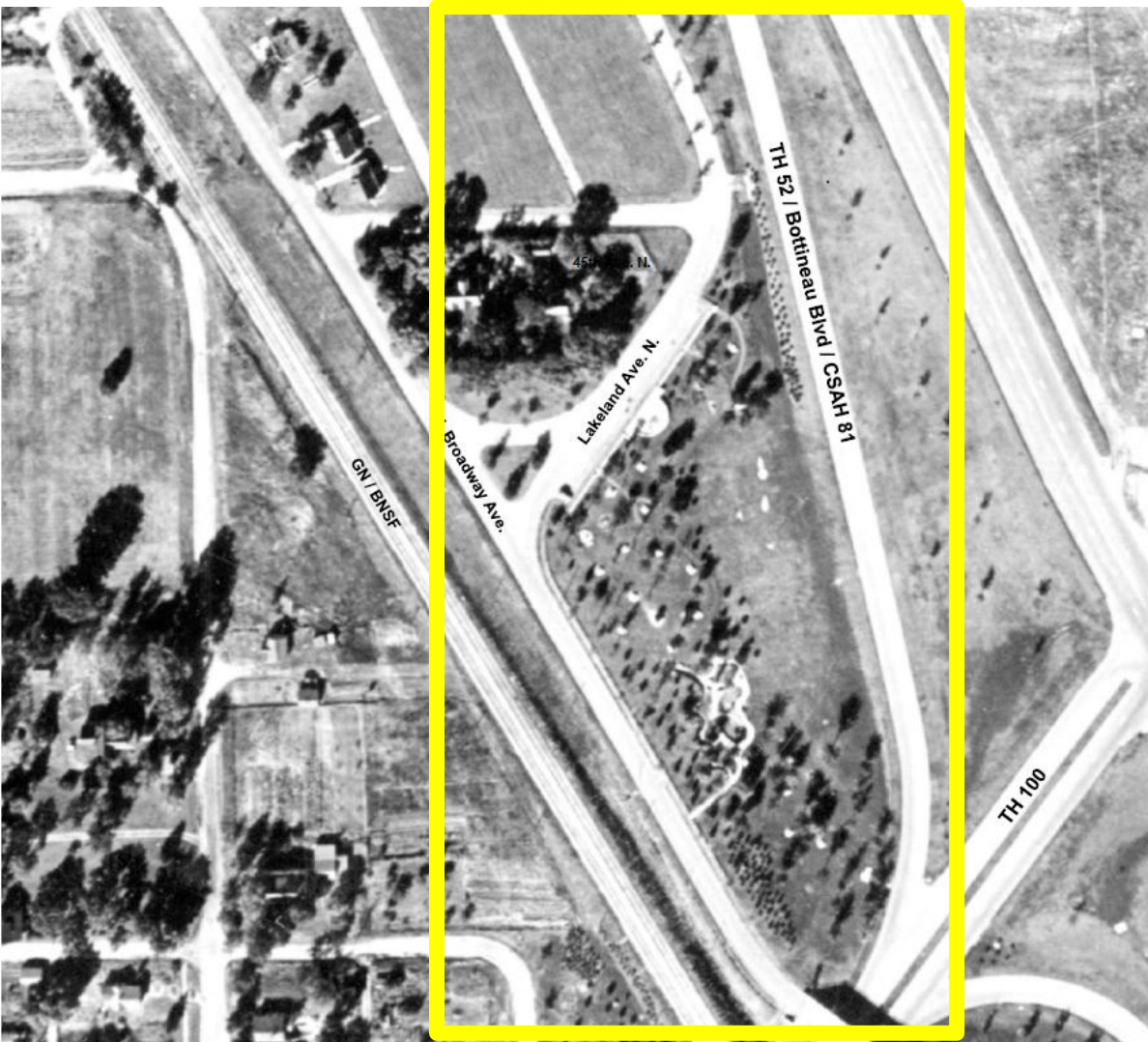


# State Historic Preservation Office





# State Historic Preservation Office



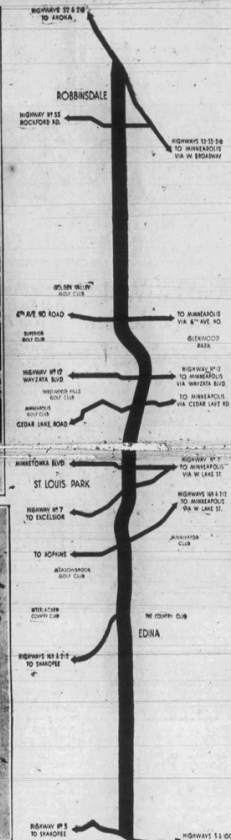
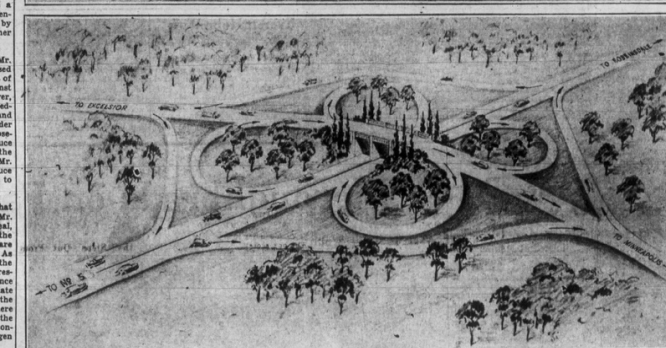
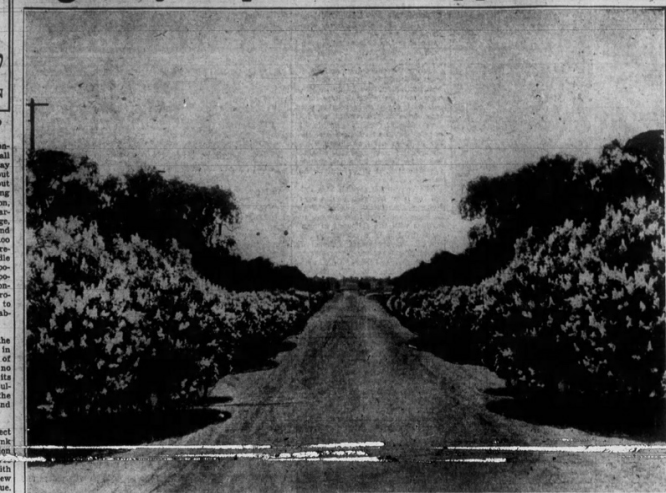
1945



1956



# Highway Department Approves 'Lilac Way' West of City



## Journal's Plan for Beautifying Belt Line OK'd

Ready to Start Work if Public Wants It, Says Elsberg

### FLOWERS PLANNED TO LINE SIX-LANE ROUTE

Landscaping First of Kind, Rivaling Washington Cherry Drive

By RUDOLPH LEE

Twelve miles of lilacs, fringing the magnificent six lane belt line highway being constructed just west of the city limits from Robbinsdale to the Fort Snelling-Shakopee road.

A beautifully landscaped lilac hedge on both sides of the great highway that will give Minneapolis a drive that will rival the cherry blossoms of Washington, the apple blossom drive of Spokane and Wenatchee.

The Journal, the state highway department Saturday approved the proposal, conditioned only on public interest in the plan.

For weeks The Journal has been studying the feasibility of the project, the adaptability of lilacs for the purpose, and programs of maintaining the lilac drive after once installed.

The state highway department is in hearty approval of the plan and it will be carried out if Minneapolis citizens endorse the plan and really want it.

#### Six Lanes Wide

The belt line, which is to be a magnificent scenic highway in itself, six lanes wide with space on each side 20 feet wide, lends itself ideally, experts say, to the beautification plan. The landscaping will take advantage of the high slopes and broad curves of the road for a background of trees and grass. The lilacs in clusters and groups will fill in to complete the picture. It is hoped that planting can begin this fall. Within two years, it is then predicted, Minneapolis will have a drive as beautiful as well as so unusual that it will attract thousands of visitors who will come to the city to enjoy the delightful experience of a ride through its fragrant splendor.

#### Rivals Washington Drive

Minneapolis' lilac way as planned has promise of rivaling the famous cherry blossom drive in Washington, known the world over for its beauty and charm. In some years, more than a hundred thousand visitors come to Washington to enjoy the sight of the Japanese cherry trees in bloom. So great is the attractiveness of the cherry tree drive that excursions are run to the city from wide areas and "cherry blossom time" in the national capital, although only 20 days in length.

Continued on page 4

### 'Human Cannon Ball' Killed in California

By United Press  
Santa Monica, Calif., July 27.—The body of William C. Miller, 24-year-old New York driver, was found wedged under the pillar of a pier here today. The "human cannon ball" lost his life when shot from a huge gun.

### Weather for Week

For the region of the Great Lakes. Reasonable temperatures first of week, followed by warmer generally fair beginning of week, stormy conditions by middle of week.  
For the upper Mississippi and lower Missouri valleys and the northern and central Great Plains. Temperatures mostly above normal.

## 1,500 to Play In Park Fete This Week

"In a King's Garden" Will Be Offered Tuesday and Wednesday

Pictures on Page 4

A child's dream will be unfolded on the shores of Lake Harriet next Tuesday evening. That fantastic revelation will be the first performance of the all-city pageant of the parks, "In a King's Garden," which will be presented by 1,500 children in Lyndale park near the Rose Garden Tuesday and Wednesday nights.

Flowers, toys and kites will be given life by the children in gaily colored costumes, white frogs, bunnies, birds, cats, dogs and elephants will do funny little dances.  
**King Ride Forth**  
The story of the pageant is similar to that of a child's dream after its



THEODORE WIRTH

Superintendent Minneapolis Parks



N. W. ELSBERG

Commissioner of Highways



A. R. NICHOLS

Highway Landscape Architect

The Belt Line highway under construction from Highway No. 1, the Fort Snelling-Shakopee road, in Robbinsdale, it parallels the city about a mile west of the used city limits. The map shows all intersecting highways running into Minneapolis. The top picture shows how the highway will appear when the proposed beautification project is completed. The 18 mile road would be bordered on either side by bridges of lilacs, giving Minneapolis the only "lilac-way" in the country. The picture was prepared by Barry Pogue, Journal staff photographer, by superimposing pictures of lilacs in Lyndale park on a picture of the Belt Line under construction near Robbinsdale. Below—The "clover leaf" pass, two of which are included in the plan for the highway. One is to be built at the intersection of the highway and Excelsior boulevard and the other at the intersection of Wayzata boulevard. The clover leaf pass eliminates all left hand turns.

## 1,700 Guests of Journal Have Happy Day on River

Good Ship Capitol Bears Bloomington Avenue Folk on Fifth of Excursion Series

Pictures on Page 4

Summer time on the river. Green arms and gray-haired southern banks slipping away into misty haze. Laughter and toiled their horns to water. White cliffs standing sheerly farther. In fact, the wheels of the against the sky. Fluffy clouds no—streetcars hardly had begun to roll fled on the surface.  
Summer time on the river—and under way.  
When they climbed on the street more than 1,700 guests of The Min-



Twin Lakes

A.B. Robbins House

TH 52 / Bottineau Boulevard / CSAH 81

TH 100 Ramp

Graeser Park

W. Broadway Avenue

GN / BNSF

Graeser Park South (razed)

Scott Ave. N.

Belt Line Highway / TH 100

43rd Ave. N.



# State Historic Preservation Office

c. 1942









# State Historic Preservation Office





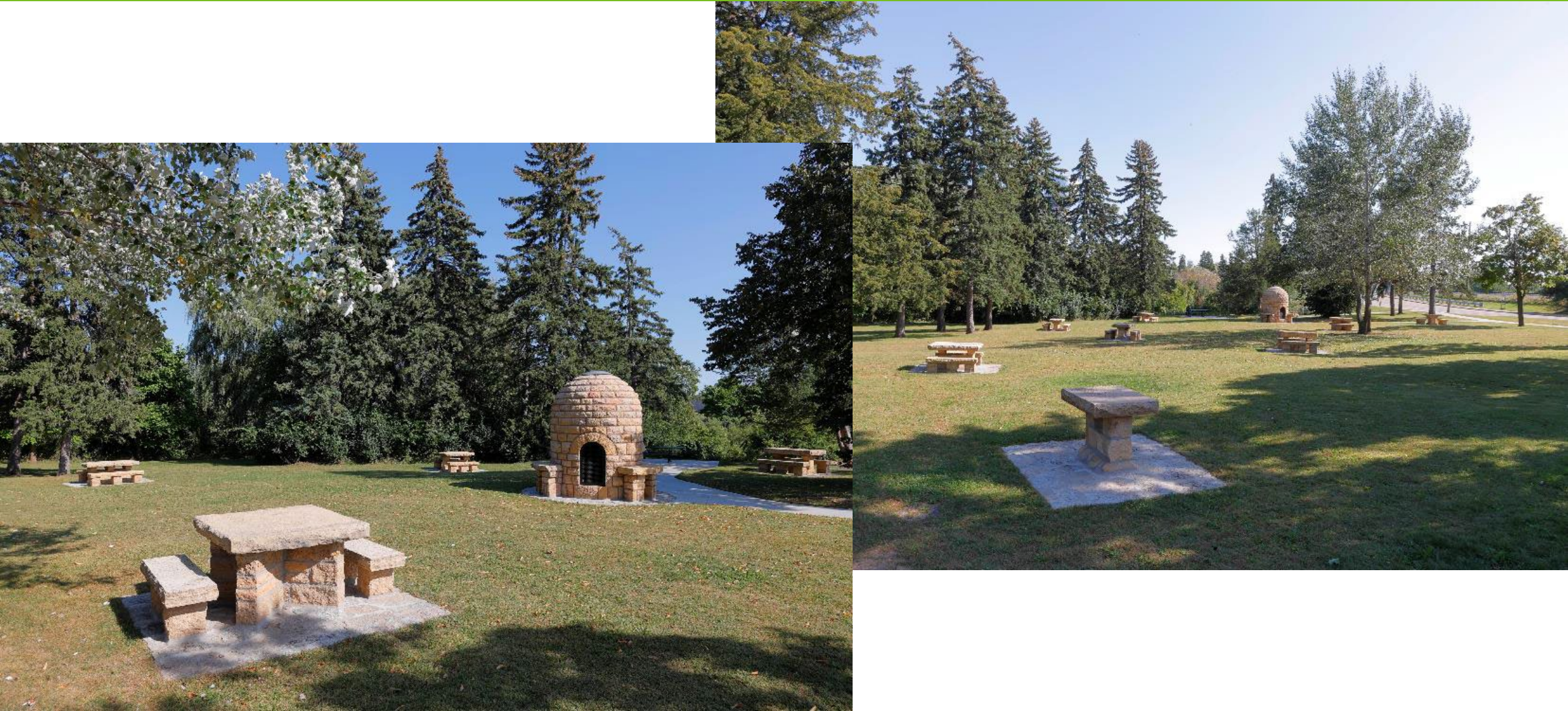
# State Historic Preservation Office



c. 1942



# State Historic Preservation Office





# State Historic Preservation Office





# State Historic Preservation Office





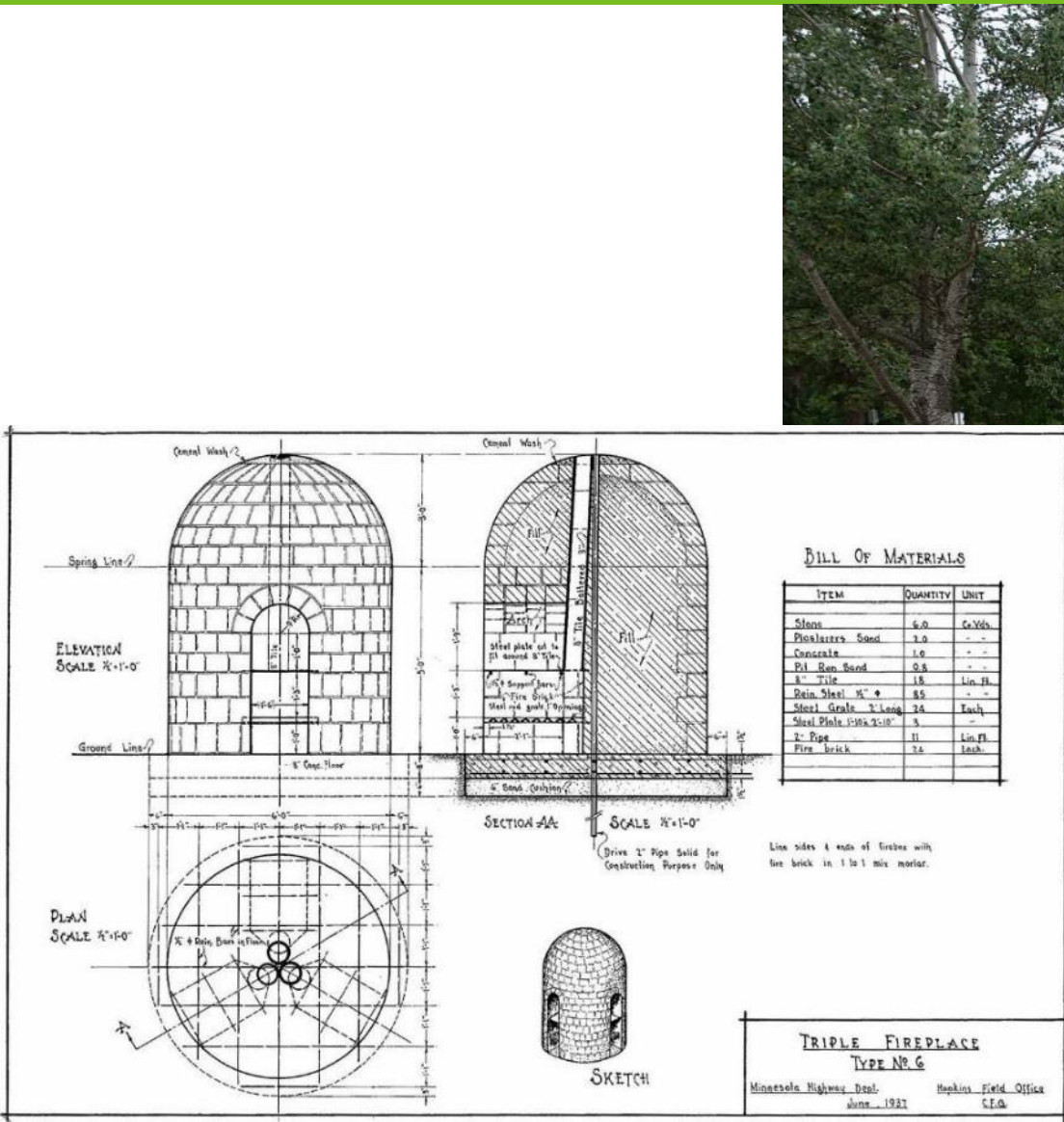
# State Historic Preservation Office



c. 1942



# State Historic Preservation Office





# State Historic Preservation Office

- Period of Significance: 1940-1941
- Level of Significance: Local
- National Register Criterion: C
- Area of Significance: Landscape  
Architecture



# State Historic Preservation Office



c. 1942



# State Historic Preservation Office

---



# **Ordean Building**

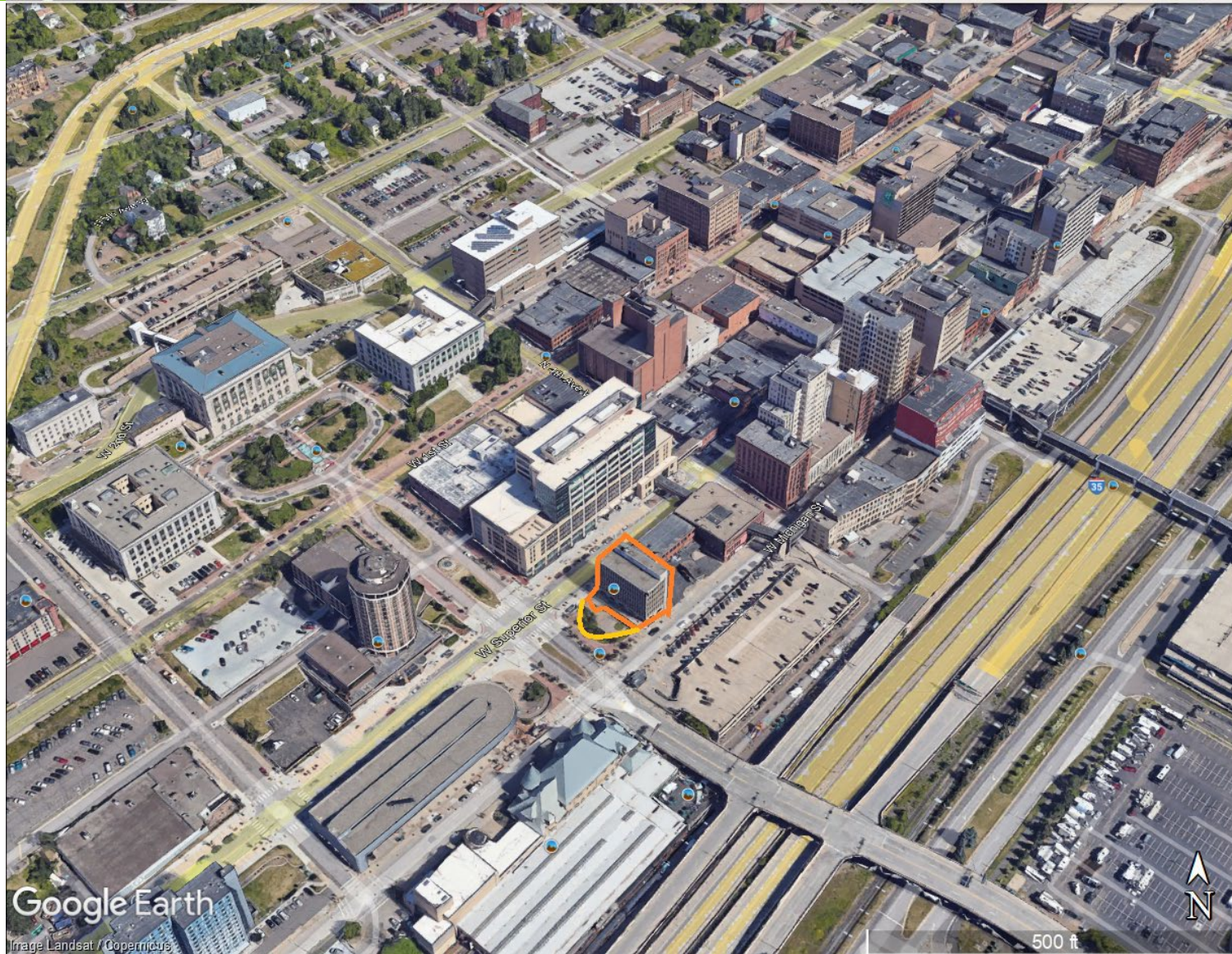
Duluth, St. Louis County

Phyllis Brower

Hess, Roise and Company



# State Historic Preservation Office





# State Historic Preservation Office





# State Historic Preservation Office





# State Historic Preservation Office





# State Historic Preservation Office





# State Historic Preservation Office





# State Historic Preservation Office



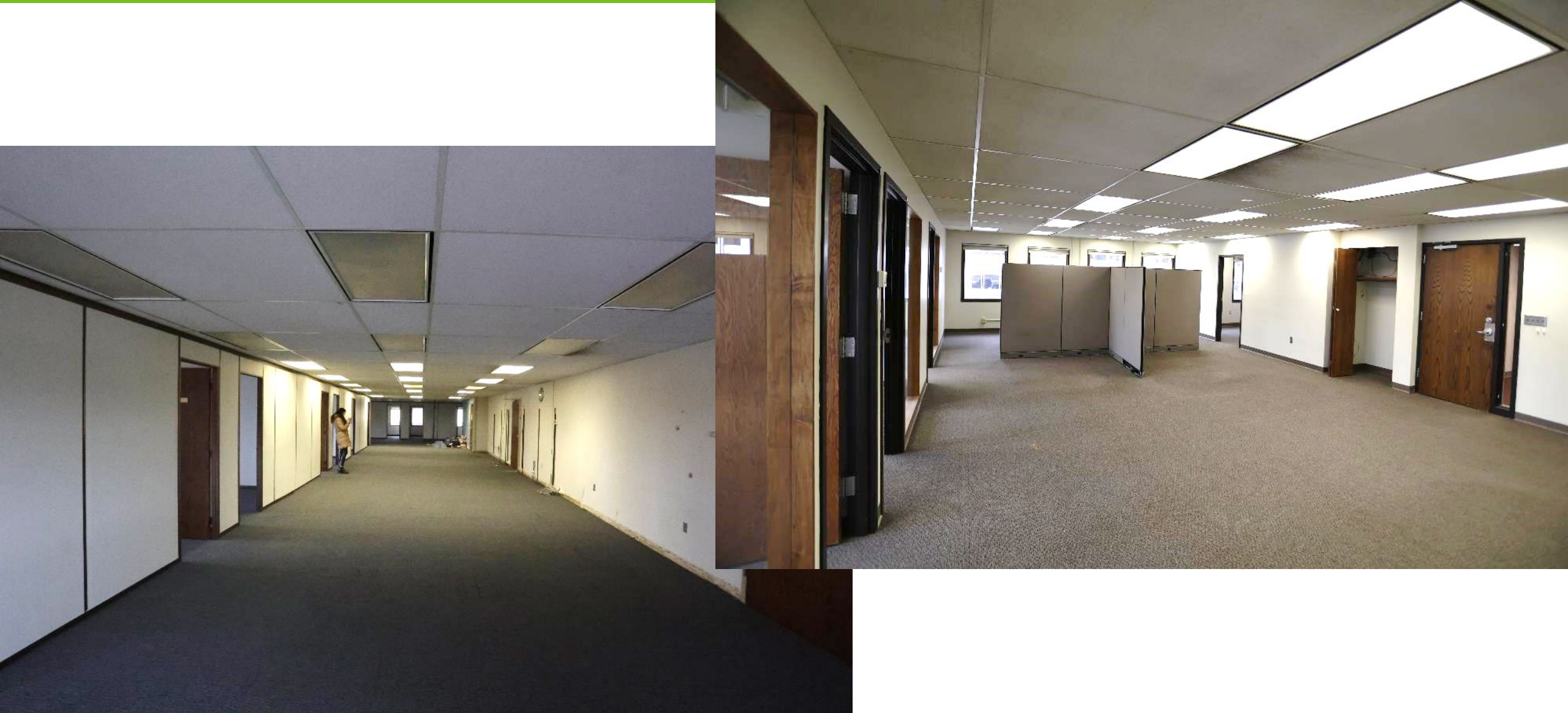


# State Historic Preservation Office





# State Historic Preservation Office





# State Historic Preservation Office



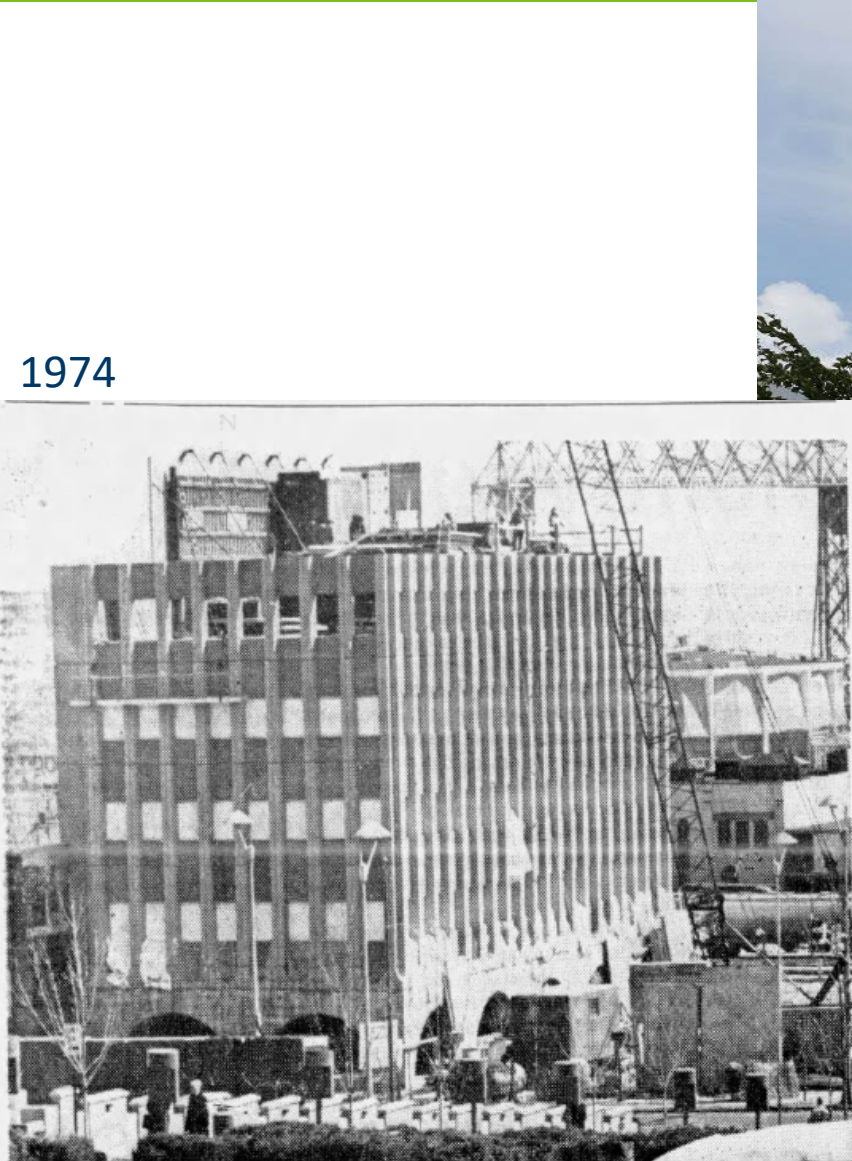


# State Historic Preservation Office

- Period of Significance: 1974-1986
- Level of Significance: Local
- National Register Criterion: A
- Area of Significance: Social History
- Criteria Consideration: G



# State Historic Preservation Office





# State Historic Preservation Office



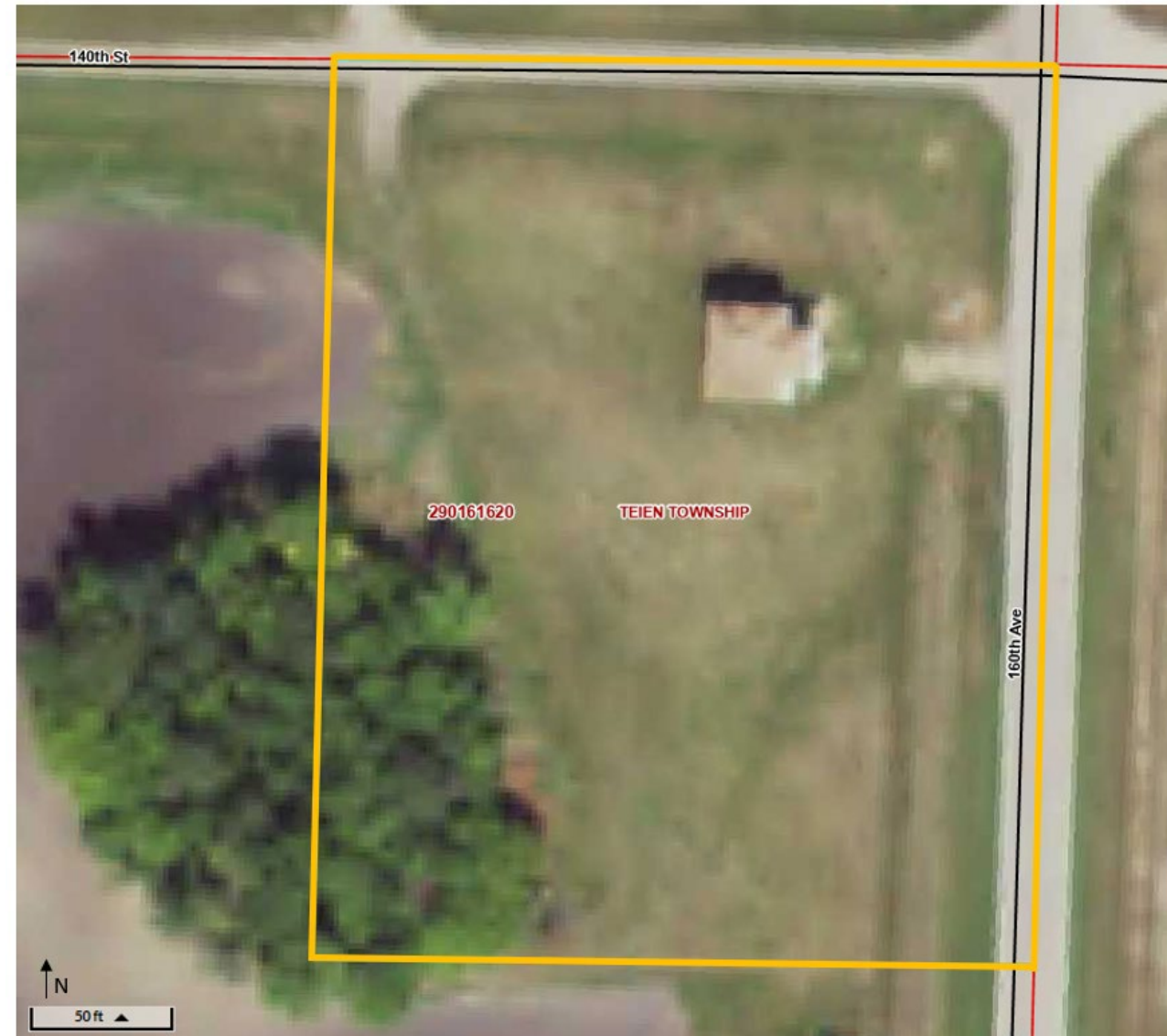
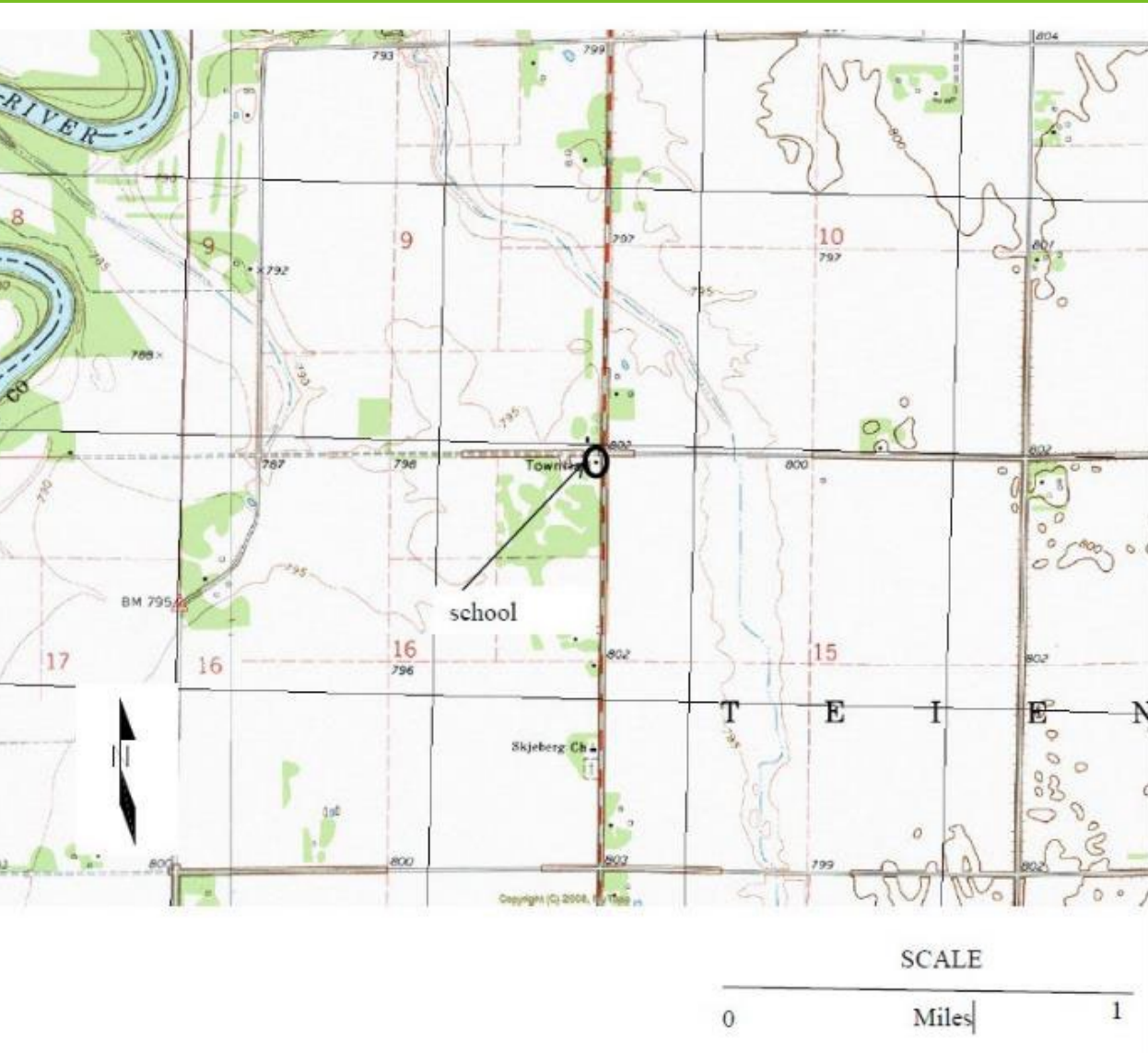
# **Teien Central School**

Teien Township, Kittson County

Laura Bloomquist-Hammond with assistance from Marlys J. Nelson, Steve Martens and Lawrence Sommer



# State Historic Preservation Office





# State Historic Preservation Office





# State Historic Preservation Office





# State Historic Preservation Office



c. 1904



c. 1909



# State Historic Preservation Office





# State Historic Preservation Office





# State Historic Preservation Office





# State Historic Preservation Office





# State Historic Preservation Office





# State Historic Preservation Office

- Period of Significance: 1904-1998
- Level of Significance: Local
- National Register Criterion: A
- Areas of Significance: Education & Politics  
and Government



# State Historic Preservation Office

c. 1904

