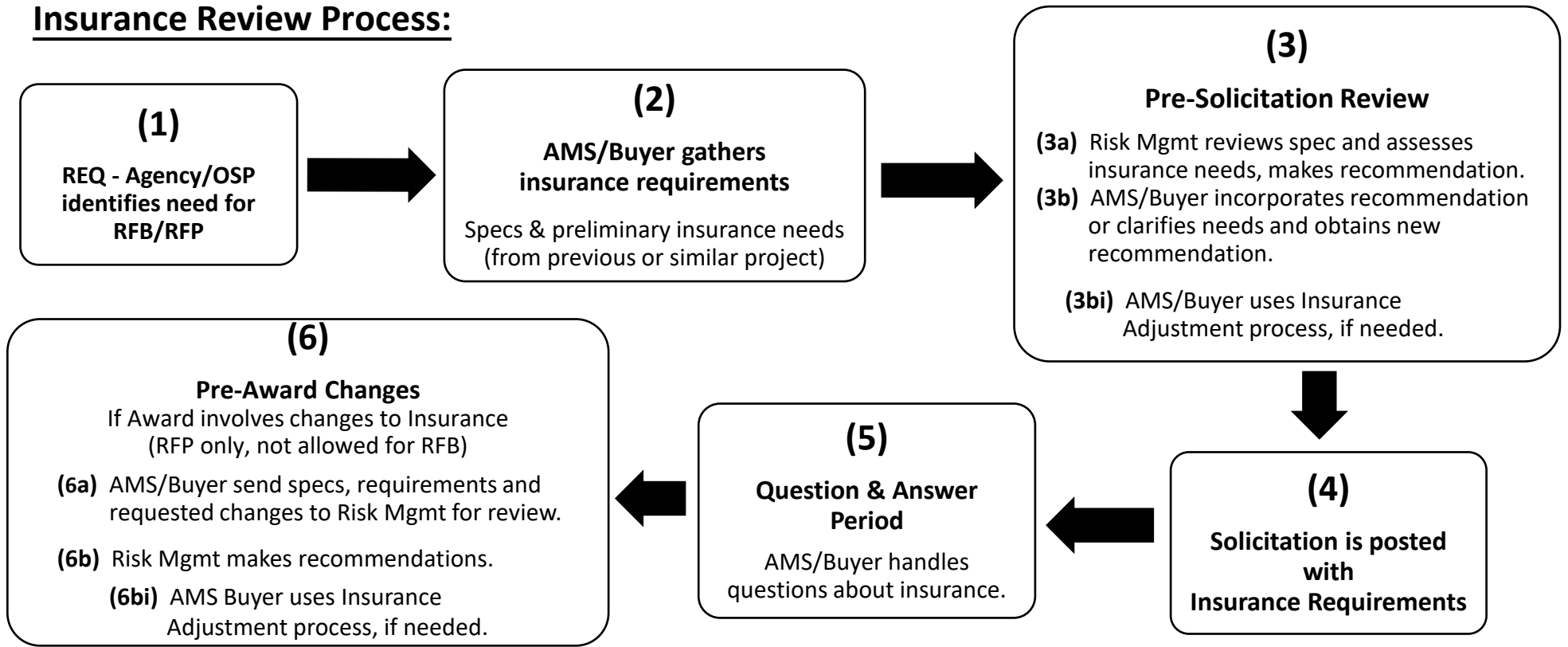


Insurance Review Process:



↑ The work "above the line" is for projects using a solicitation (RFB/RFP) and does not involve the OSP Insurance team (Bri/Amy) at this stage unless there are special circumstances.
 ↓ The work "below the line" is for awards (including Single Source, Direct Select, Equity Select, Emergency Authorization) and amendments.

