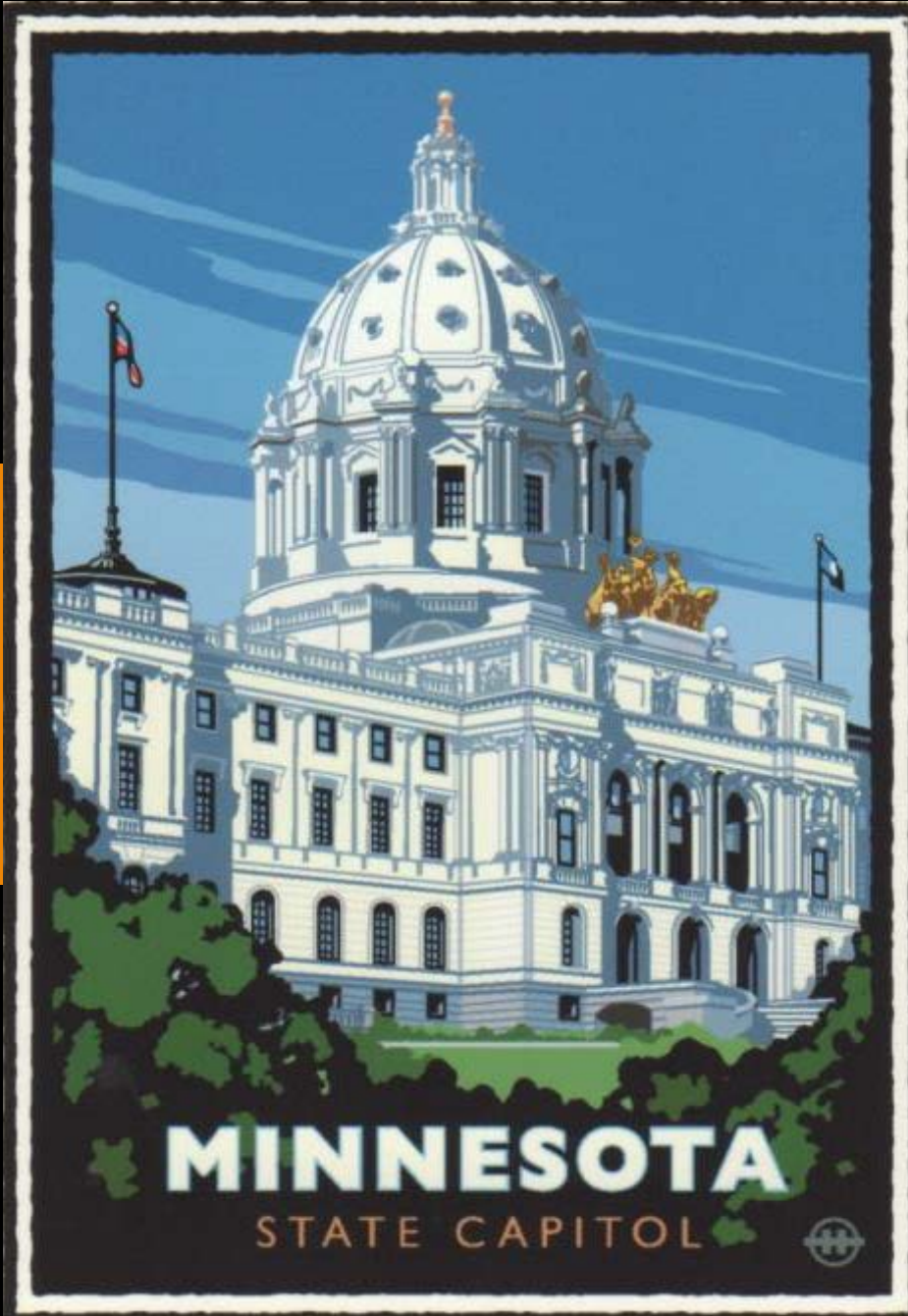


# ART at the CAPITOL

August 3, 2015

## Zones & Planning Discussion



Ted Lentz AIA







1908



Photo by Carol Highsmith from [www.cassgilbertsociety.com](http://www.cassgilbertsociety.com)











# Cass Gilbert – Architect

1859-1934

## **Significant Buildings**

Minnesota State Capitol – 1895 - 1905

New York Custom House – 1899 - 1906

Woolworth Tower – 1910 - 1913

United States Supreme Court - 1928 - 1935

## **Selected Achievements**

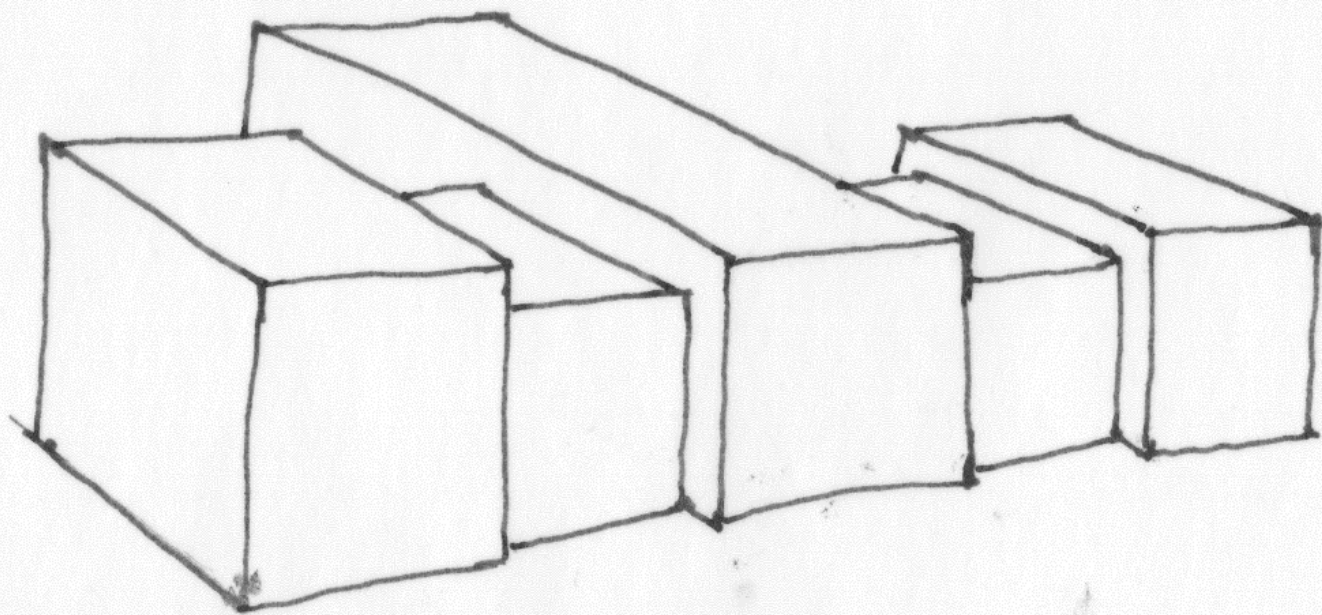
Founder- AIA – Minnesota

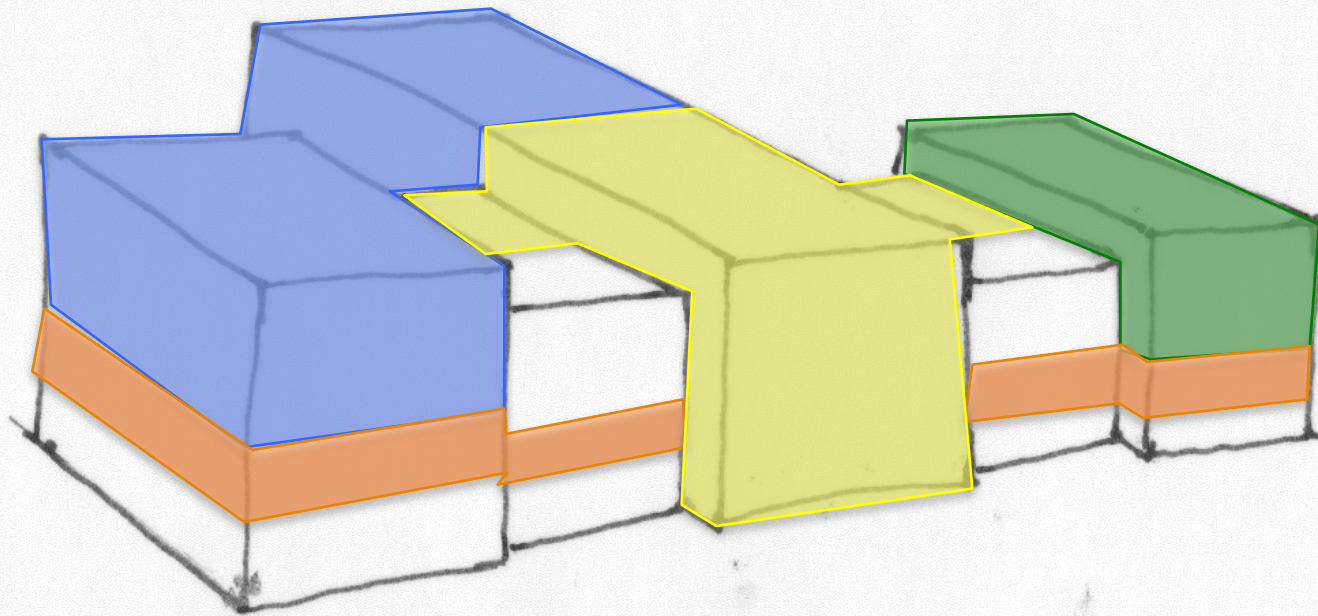
National AIA President – 1908-9

American Academy of Arts Gold Medal -  
1921

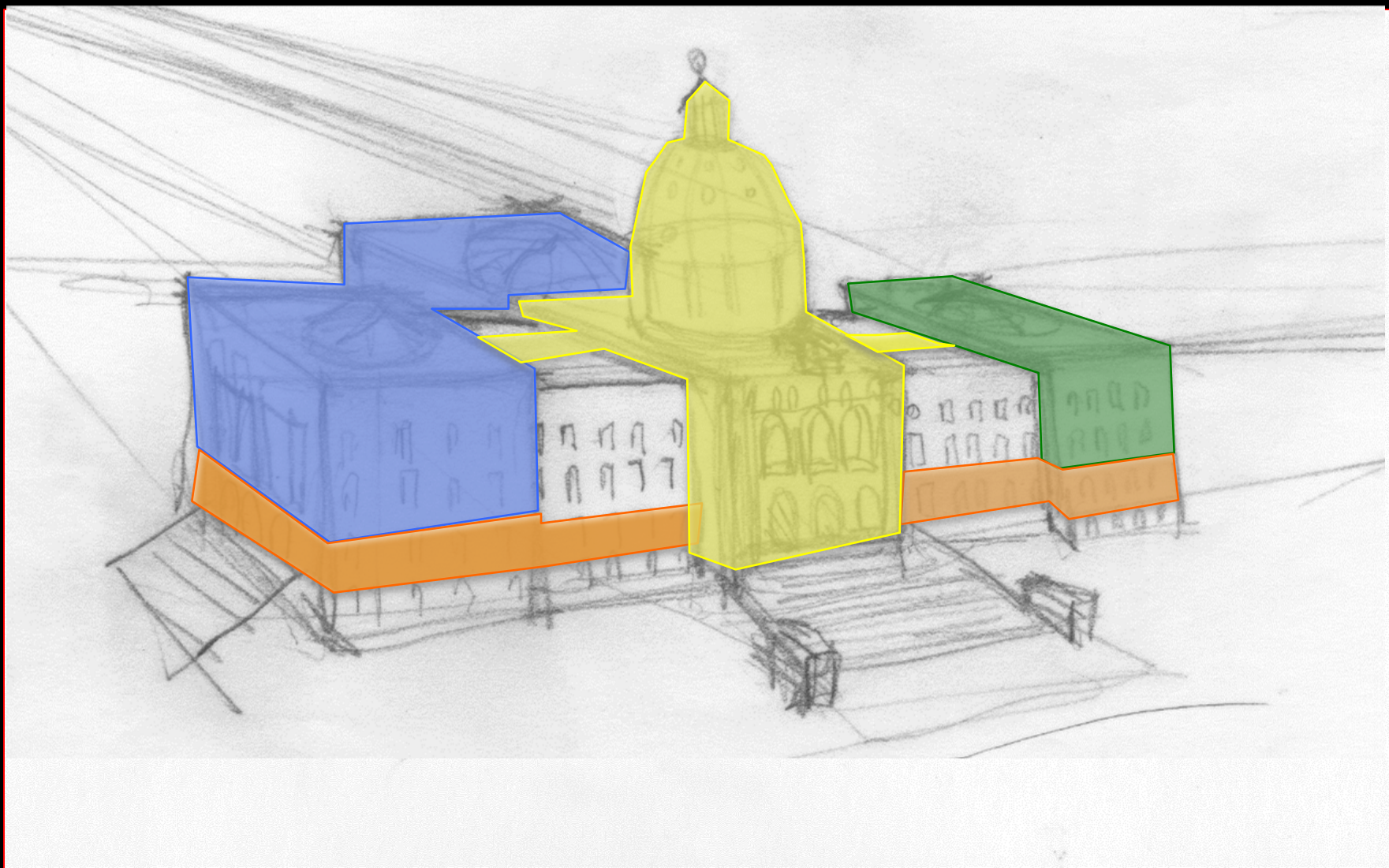






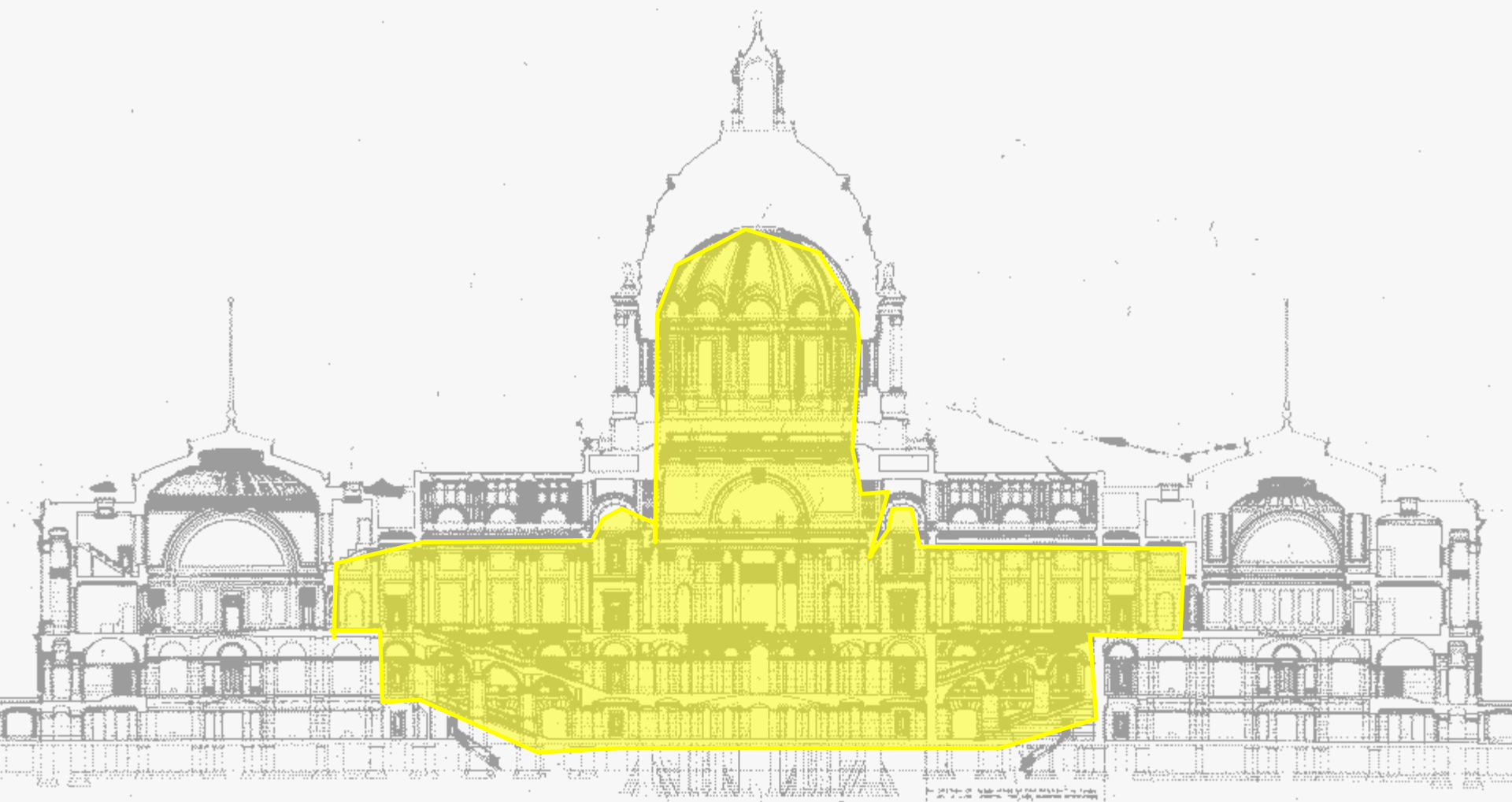












LONGITUDINAL SECTION ON LINE 'A-A' (looking South)

• MINNESOTA STATE CAPITOL •  
 • Case Gilbert Architects •

• SCALE 1/8" = 1'-0"

TO SCALE: 1/8" = 1'-0"  
 1/8" = 1'-0"  
 1/8" = 1'-0"

[117]

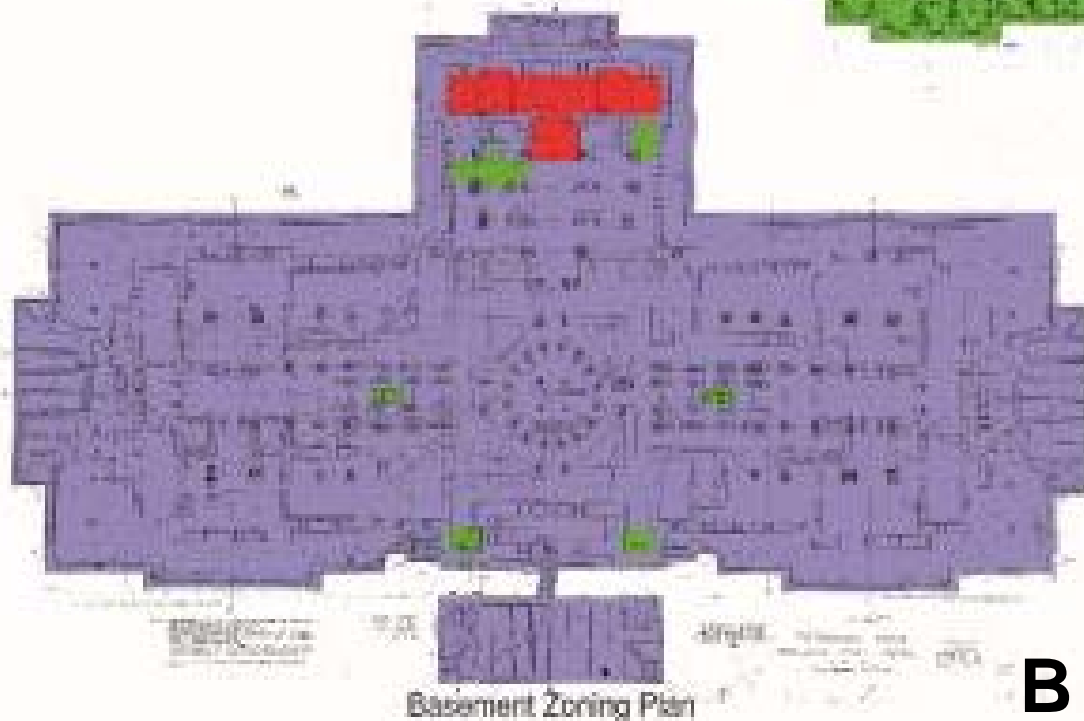




# Architectural Integrity - Guiding Principle

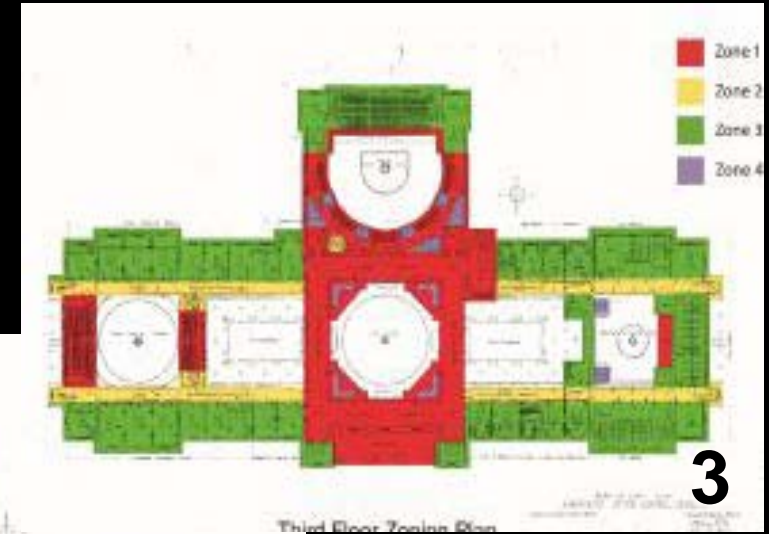


G



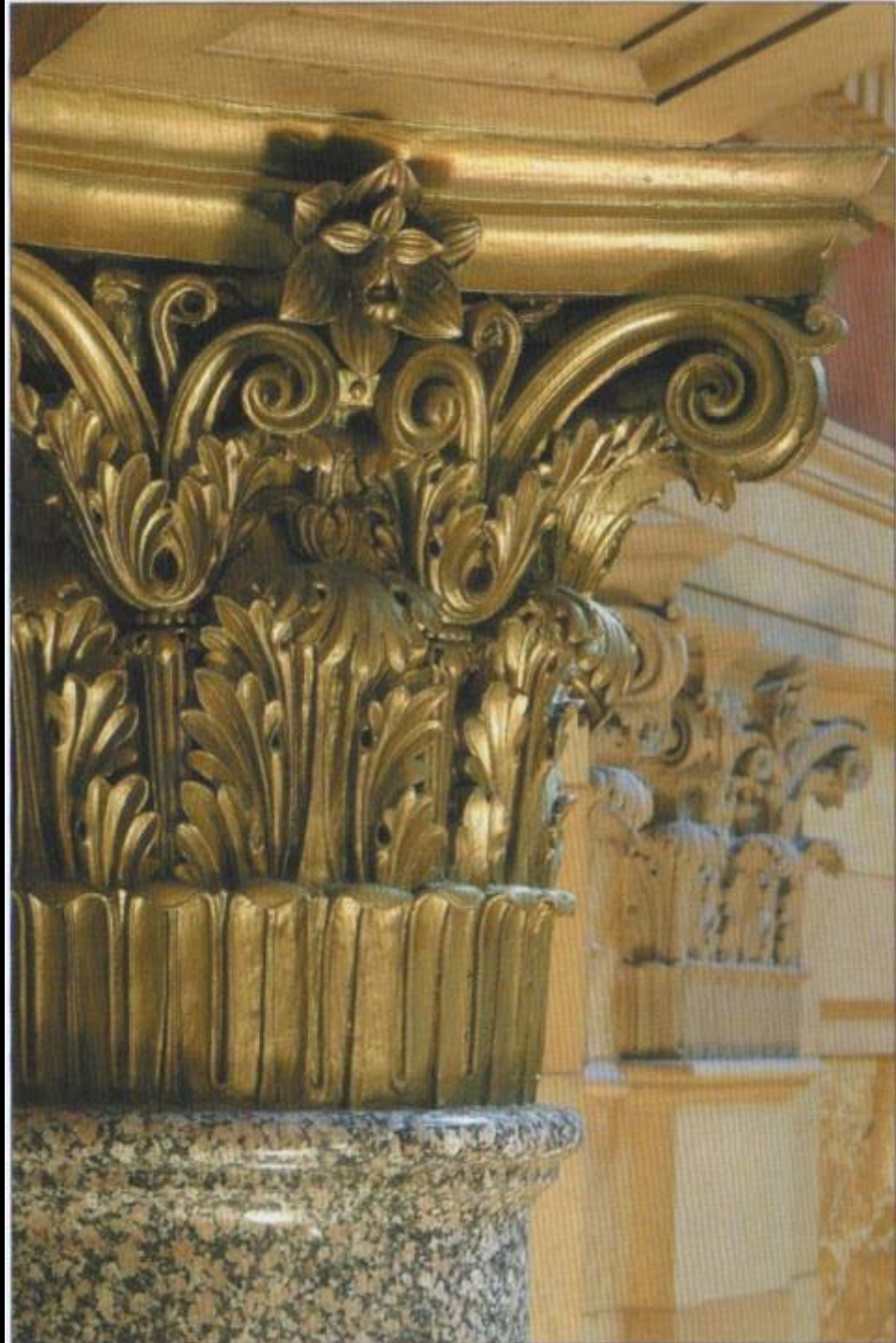
B

# Architectural Integrity - Guiding Principle











# ATTENTION TO DETAIL



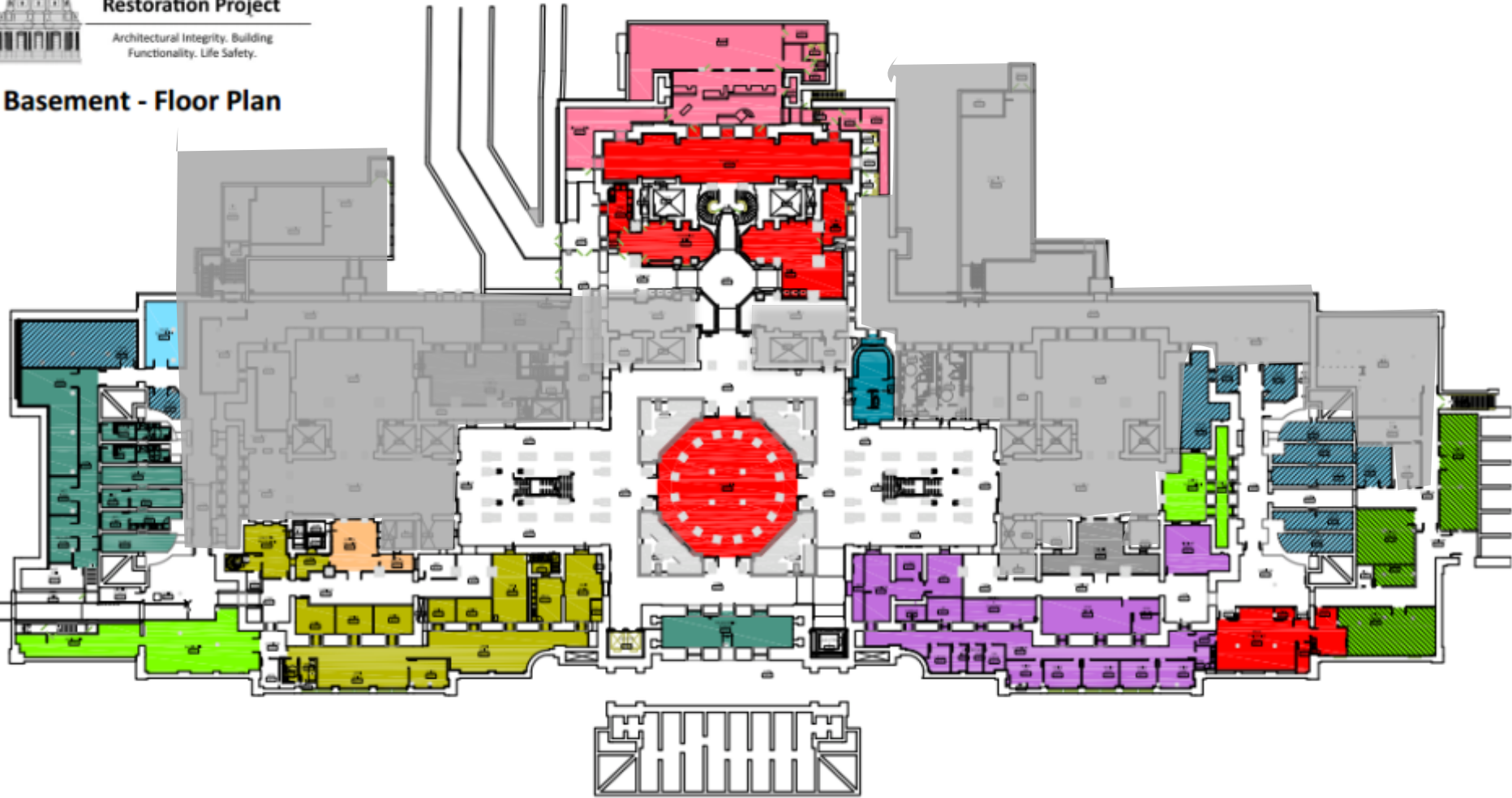
1905 FURNITURE OF THE MINNESOTA STATE CAPITOL



**Minnesota State Capitol  
Restoration Project**

Architectural Integrity. Building  
Functionality. Life Safety.

**Basement - Floor Plan**

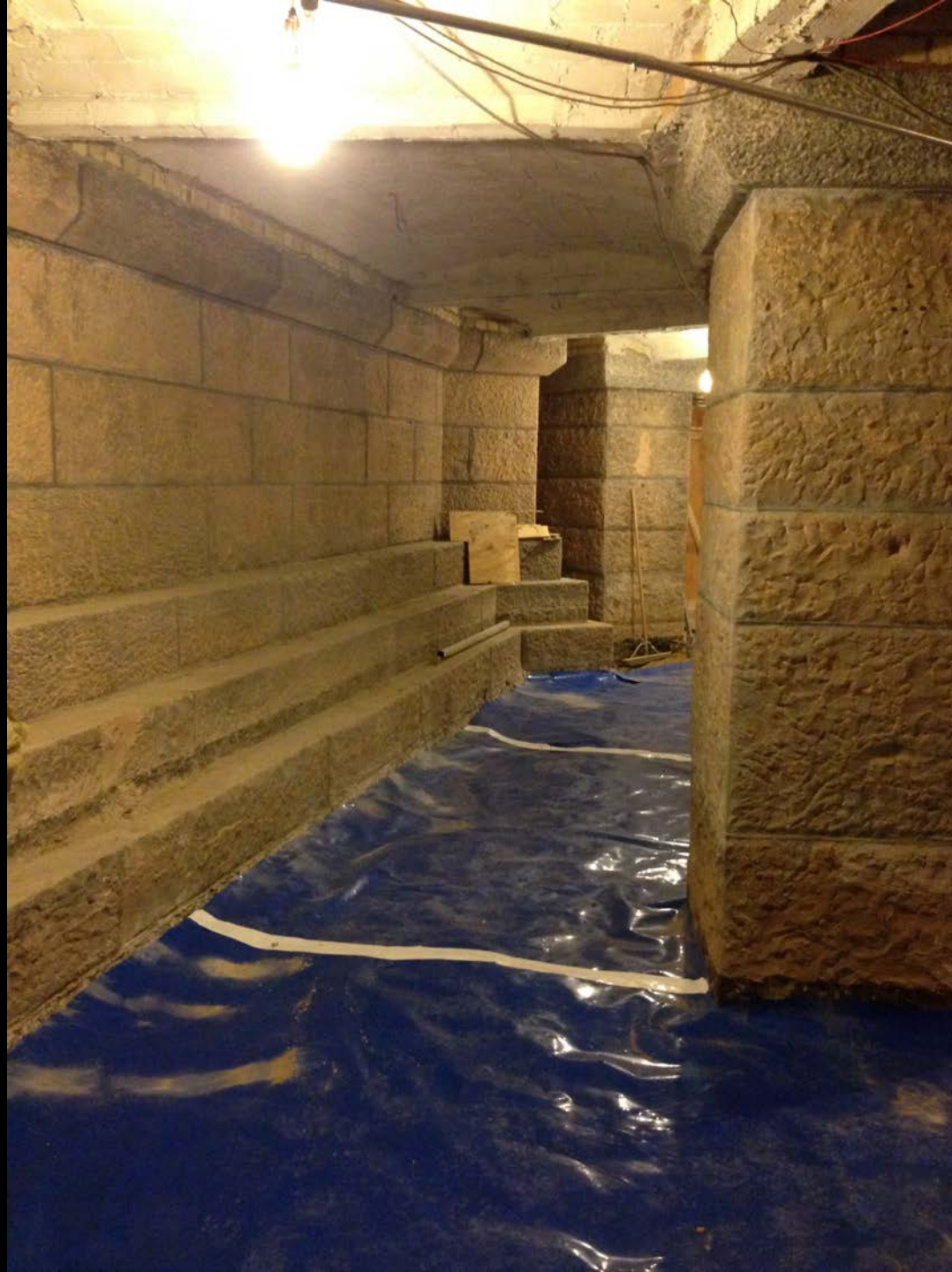


- CAPITOL SECURITY - 534 SQFT
- FOOD SERVICE - 4,010 SQFT
- GOVERNMENT RELATIONS - 616 SQFT
- GOVERNOR'S OFFICE - 4,939 SQFT
- HOUSE OFFICE - 470 SQFT
- HOUSE STORAGE - 3,540 SQFT

- PLANT MANAGEMENT - 4,253 SQFT
- PRESS - 5,430 SQFT
- SENATE OFFICE - 2,514 SQFT
- SENATE STORAGE - 2,325 SQFT
- SHARED/OTHER - 2,173 SQFT
- PUBLIC - (8,077 TOTAL SQFT)
- DINING ROOM SEATING - 3,926 SQFT
- PRESS CONFERENCE - 1,256 SQFT
- CEREMONIAL - 2,895 SQFT

**Proposed Use – Basement Floor Plan April 2015**













□ □ □ □ □ □ □ |

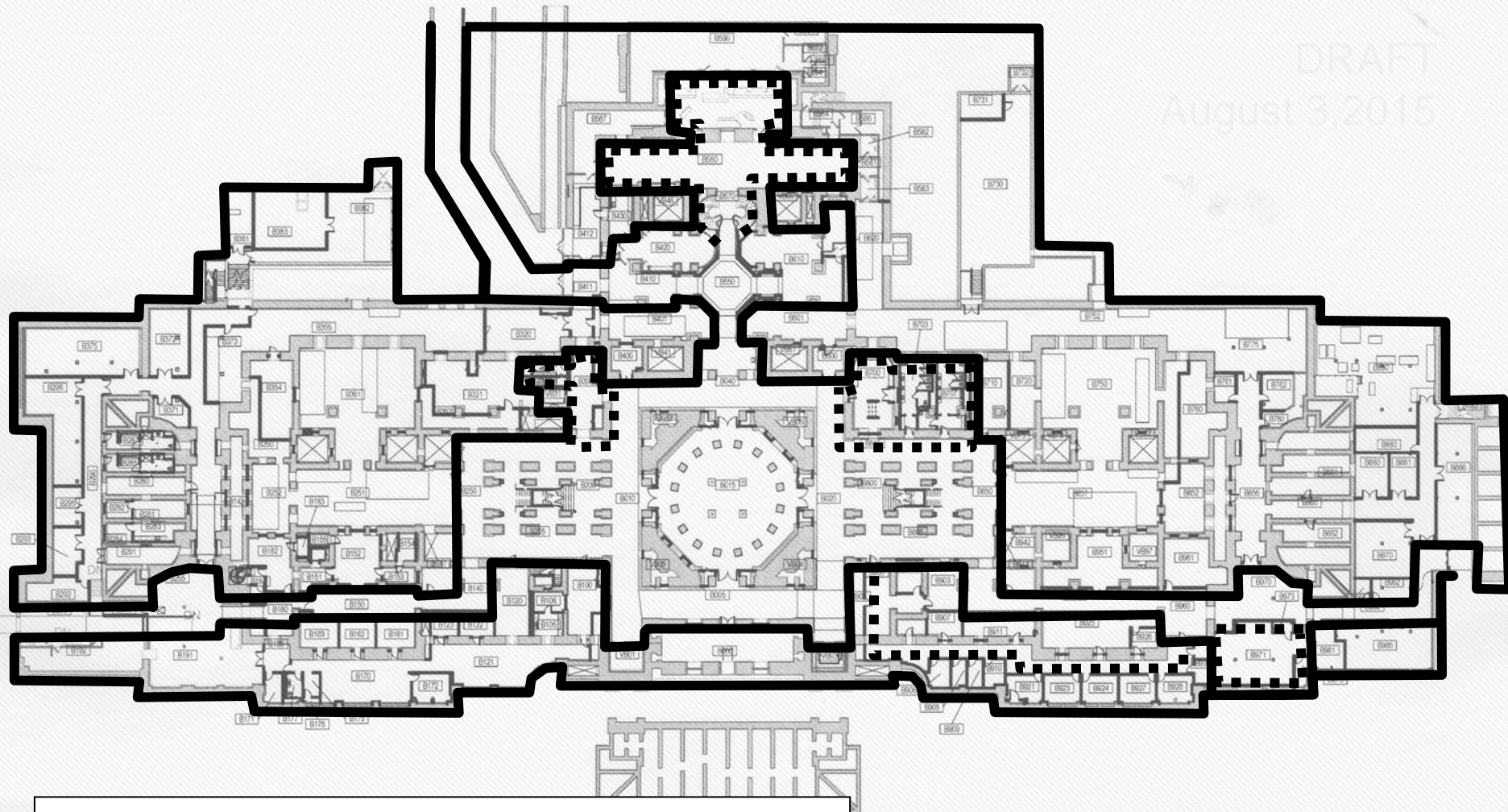


A horizontal number line representing distance in feet. It starts at 0 and ends at 160. Major tick marks are labeled at 0, 20, 40, 80, and 160. The segment between 0 and 20 is shaded gray.

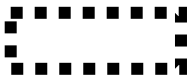
MN Capitol Basement - # **B**



DRAFT  
August 3, 2015



Open areas included in Art at the Capitol



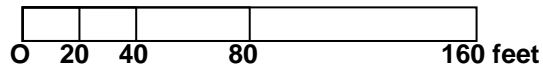
Zone potentially included in Art at the Capitol



Corridor potentially included in Art at the Capitol



Zones not included



## ART ZONES AT THE CAPITOL

MN Capitol Basement - # **B**



# Minnesota State Capitol Restoration Project

Architectural Integrity, Building  
Functionality, Life Safety.

## Ground Floor - Floor Plan



- ATTORNEY GENERAL - 1,232 SQFT
- GOVERNOR'S OFFICE - 4,502 SQFT
- HOUSE - 1,872 SQFT
- MHS - 3,123 SQFT
- SENATE - 12,654 SQFT
- PUBLIC - (580 TOTAL SQFT)  
-NON DEDICATED CONFERENCE - 580 SQFT



State  
of  
Minnesota

Department  
of  
Administration

Real Estate  
and Construction  
Services

State Capitol  
Building  
G0231010062

Notes / Remarks  
02/1/2013

Ground Floor

Drawn By:  
Checked By:  
Approved By:

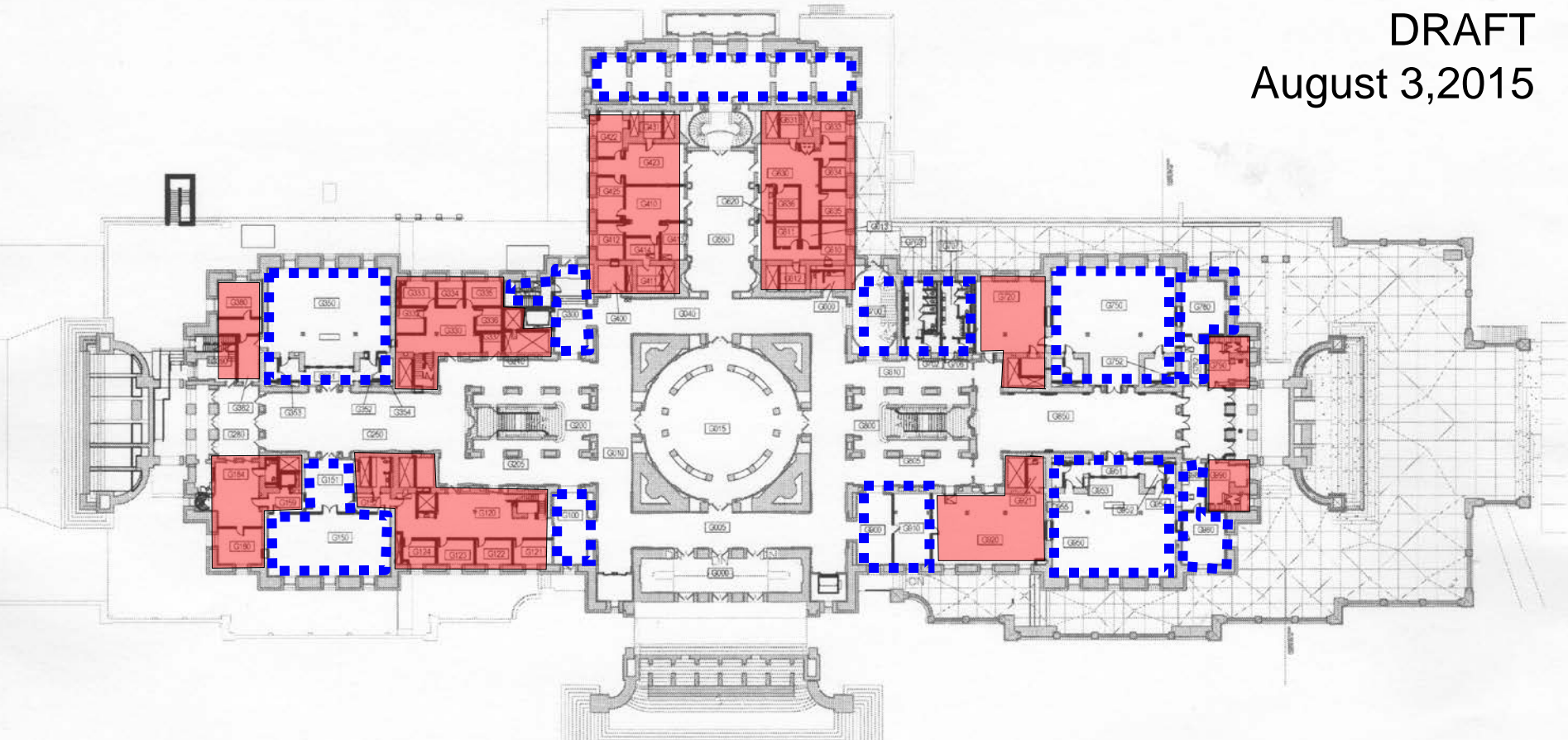
2 of 7

Proposed Use – Ground Floor Plan April 2015





DRAFT  
August 3, 2015



Open areas included in Art at the Capitol

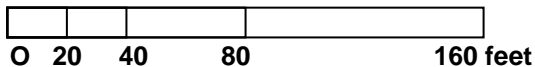
Zone potentially included in Art at the Capitol



Corridor potentially included in Art at the Capitol



Zones not included



## ART ZONES AT THE CAPITOL

MN Capitol Ground Floor - # **G**

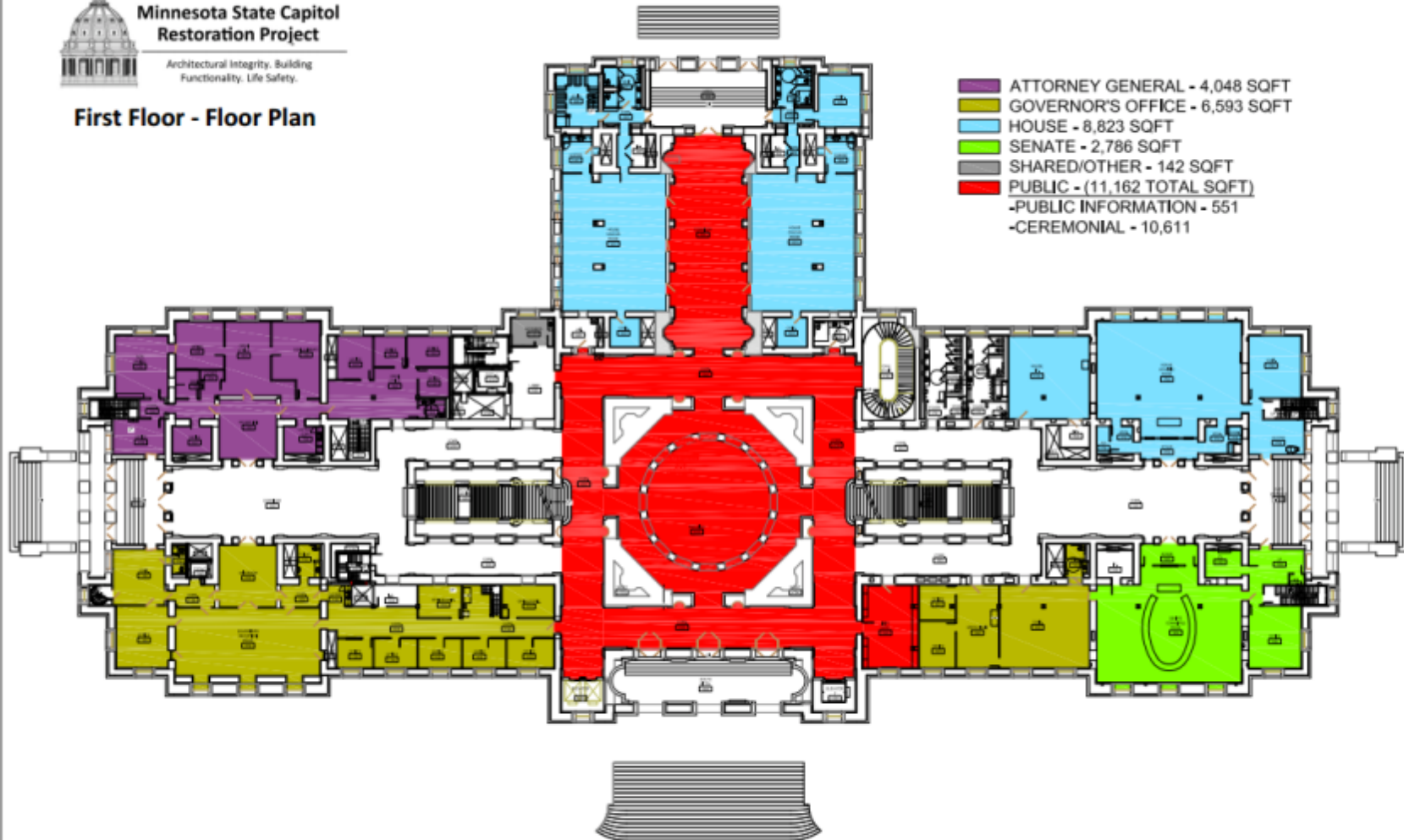




# Minnesota State Capitol Restoration Project

Architectural Integrity. Building  
Functionality. Life Safety.

## First Floor - Floor Plan



State  
of  
Minnesota

Department  
of  
Administration

Real Estate  
and Construction  
Services

State Capitol  
Building  
G0231010062

Notes / Remarks  
1/21/2015

First Floor

Drawn By:  
Checked By:  
Approved By:

3 of 7

Proposed Use – First Floor Plan April 2015



The Treaty of Traverse des Sioux

Francis D. Millet

Governor's Reception Room





The Battle of Nashville

Howard Pyle

Governor's Reception Room









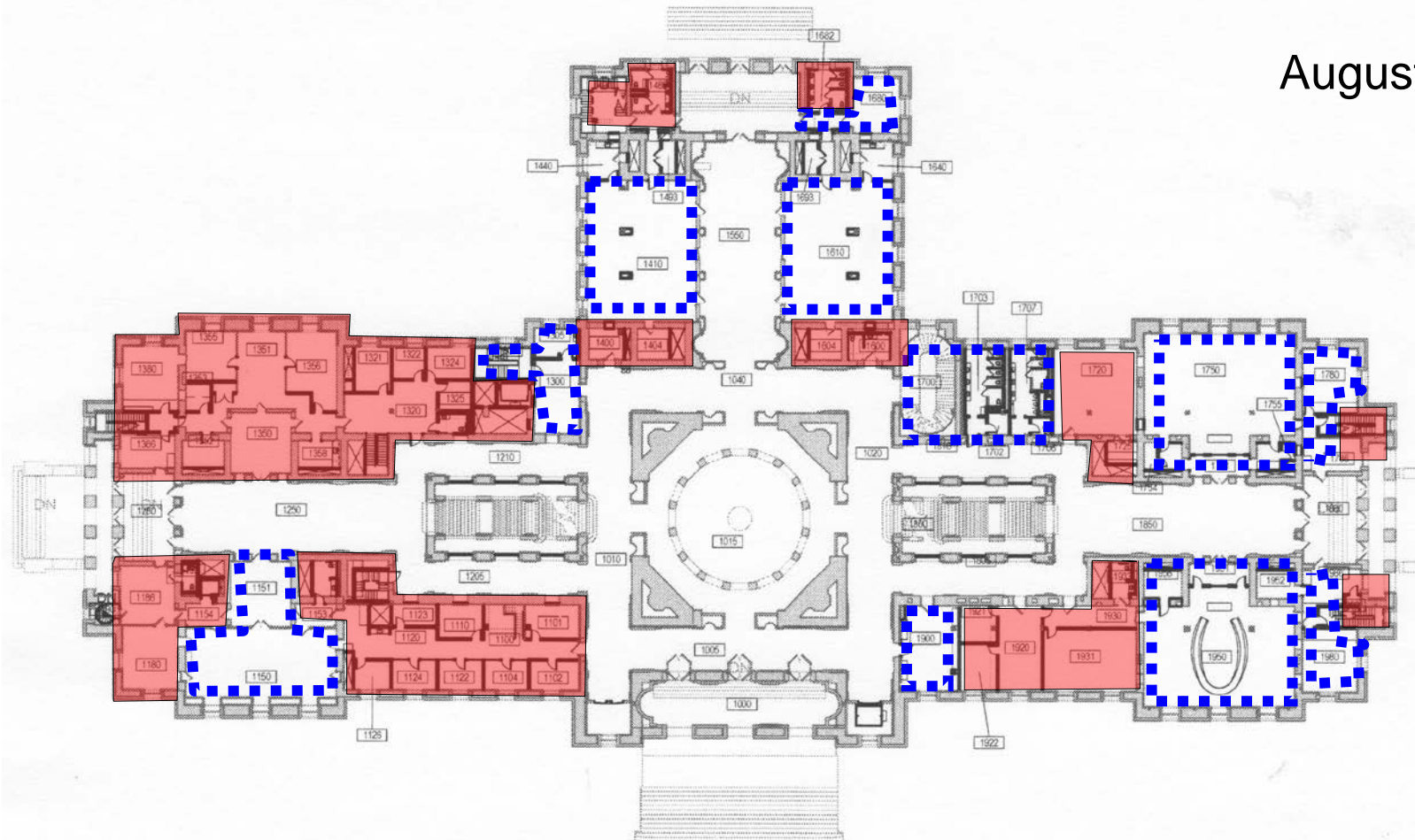
## Civilization of the Northwest: The American Genius

A young man led by Wisdom and Hope leaves home- held back by timidity but drawn forward by Hope and Wisdom.

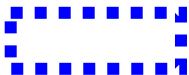
Edward Simmons

Rotunda

DRAFT  
August 3, 2015



Open areas included in Art at the Capitol



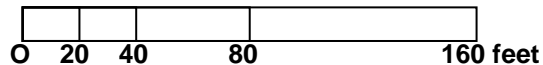
Zone potentially included in Art at the Capitol



Corridor potentially included in Art at the Capitol



Zones not included



## ART ZONES AT THE CAPITOL

MN Capitol First Floor - # **1**

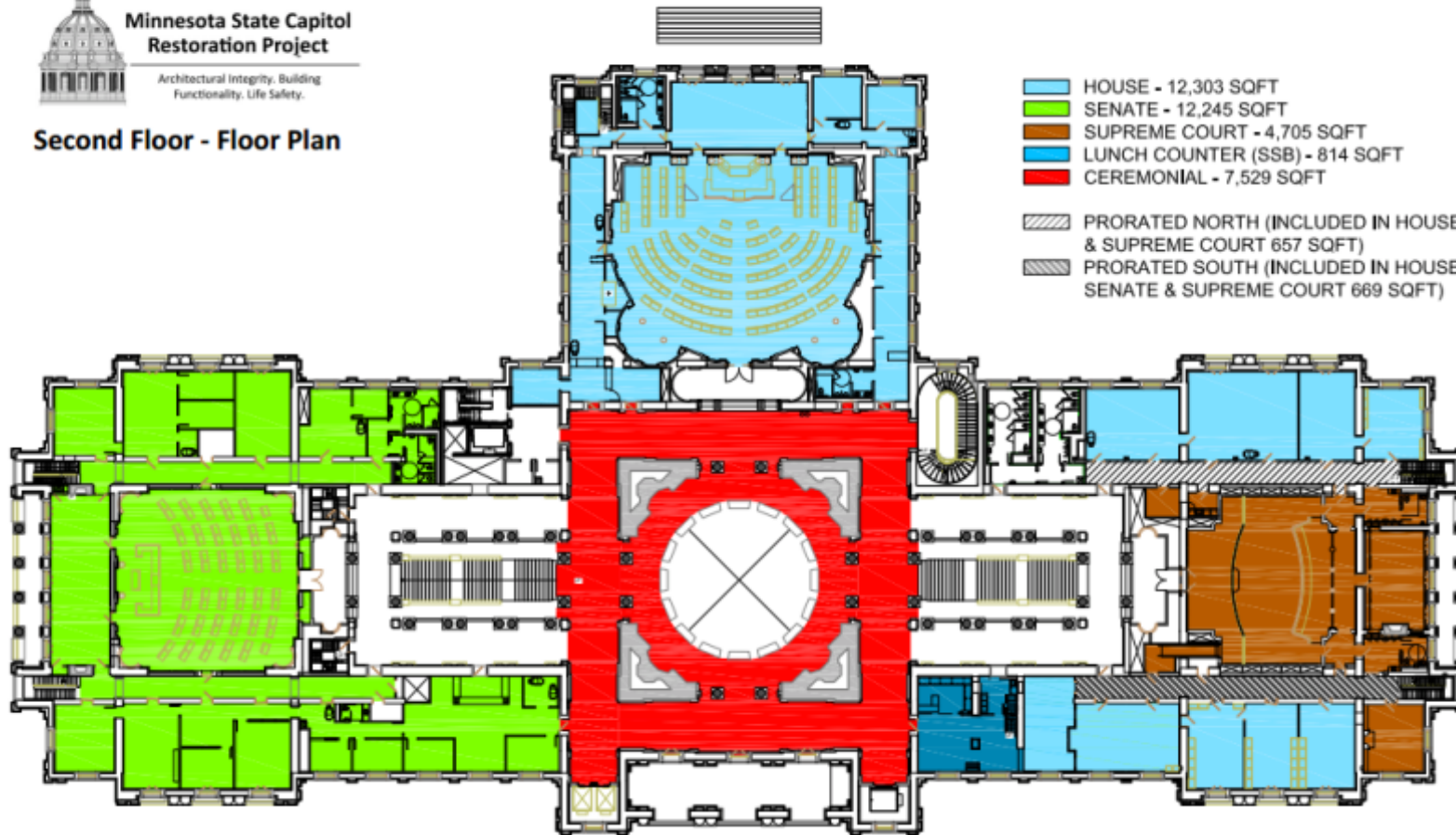




# Minnesota State Capitol Restoration Project

Architectural Integrity, Building  
Functionality, Life Safety.

## Second Floor - Floor Plan



State  
of  
Minnesota

Department  
of  
Administration

Real Estate  
and Construction  
Services

State Capitol  
Building

G0231010062

Notes / Remarks:  
1/21/2015

Second Floor

Drawn By: B. Muehler  
Checked By: C. Bergman  
Approved By:

4 of 7

Proposed Use – Second Floor Plan April 2015



## The Sacred Flame (Yesterday, Today and Tomorrow)

Henry Oliver Walker

West – Grand Staircase





Six Lunettes

—

Logger  
Horticulture  
Huntress  
Pioneer  
Sowing  
Dairy

Lunettes - The Logger (above)

Arthur Willet

West Grand Staircase



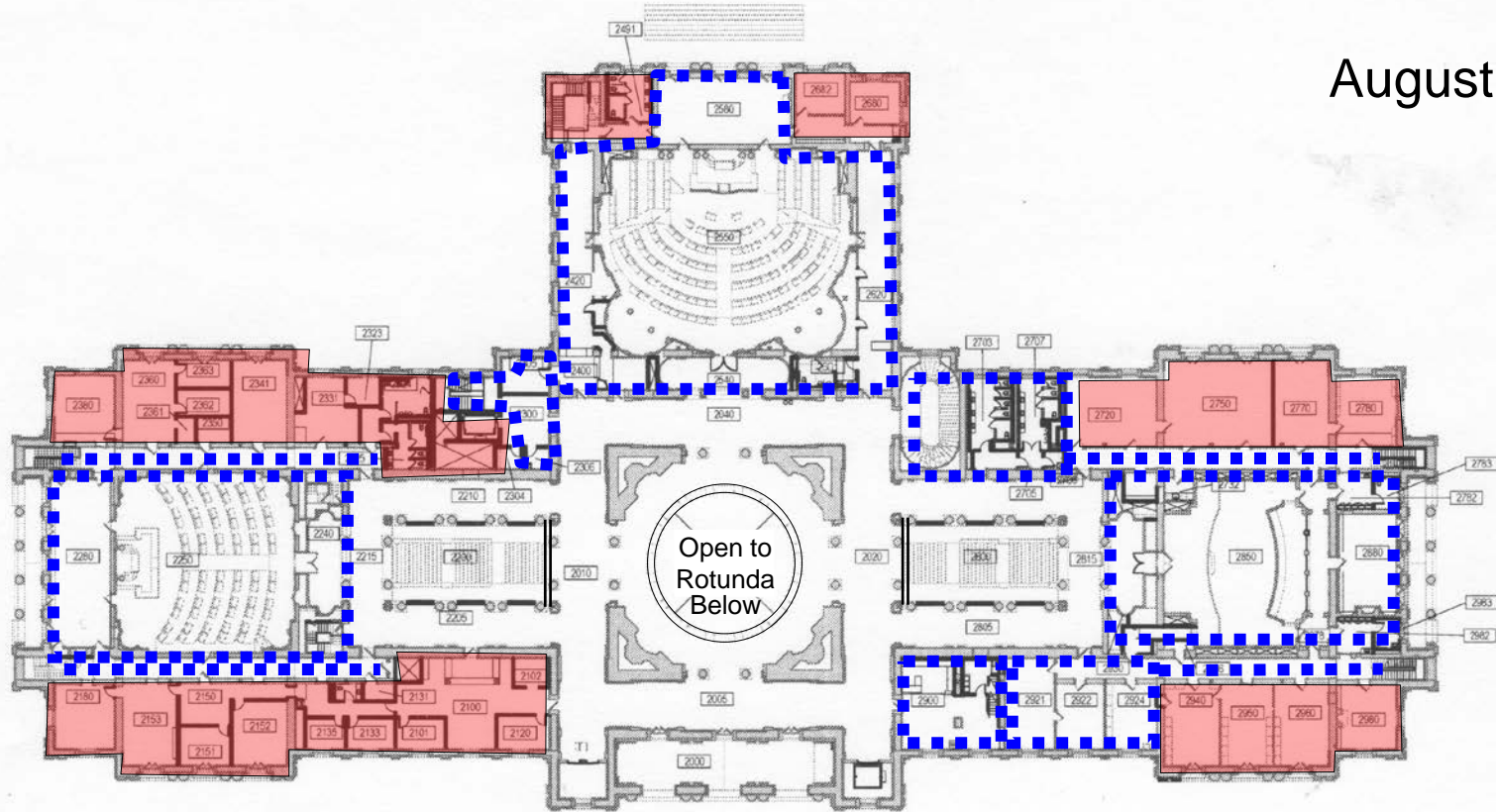
The Relation of the Individual to the State

John La Farge

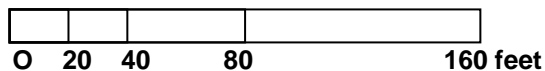
Supreme Court Chamber



DRAFT  
August 3, 2015



- Open areas included in Art at the Capitol
- Zone potentially included in Art at the Capitol
- Corridor potentially included in Art at the Capitol
- Zones not included



## ART ZONES AT THE CAPITOL

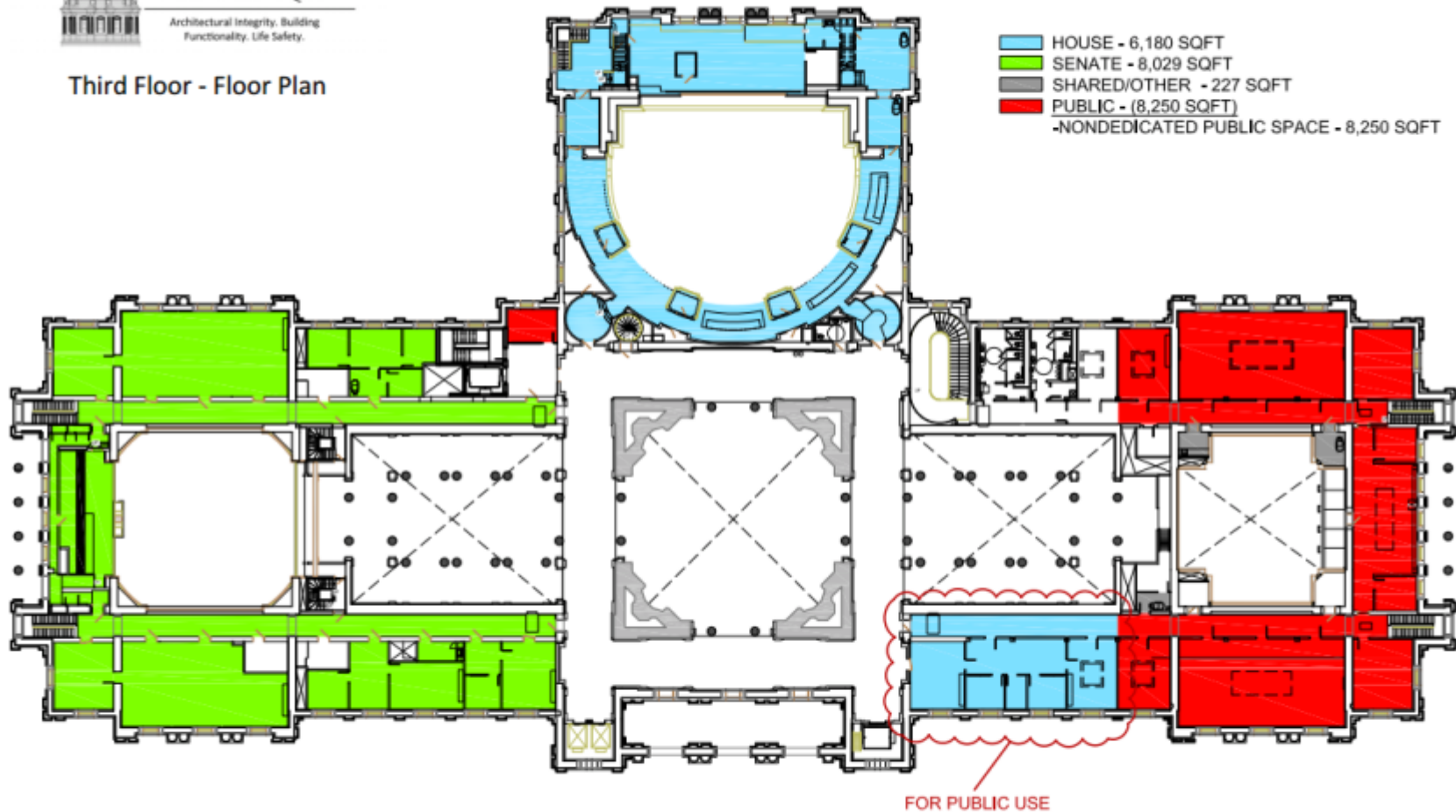
MN Capitol Second Floor - # **2**



# Minnesota State Capitol Restoration Project

Architectural Integrity. Building  
Functionality. Life Safety.

## Third Floor - Floor Plan



State  
of  
Minnesota  
Department  
of  
Administration  
Real Estate  
and Construction  
Services

State Capitol  
Building  
G0231010062

Notes / Remarks  
1/21/2014

Third Floor

Drawn By:  
Checked By:  
Approved By:

6 of 7

Proposed Use – Third Floor Plan April 2015

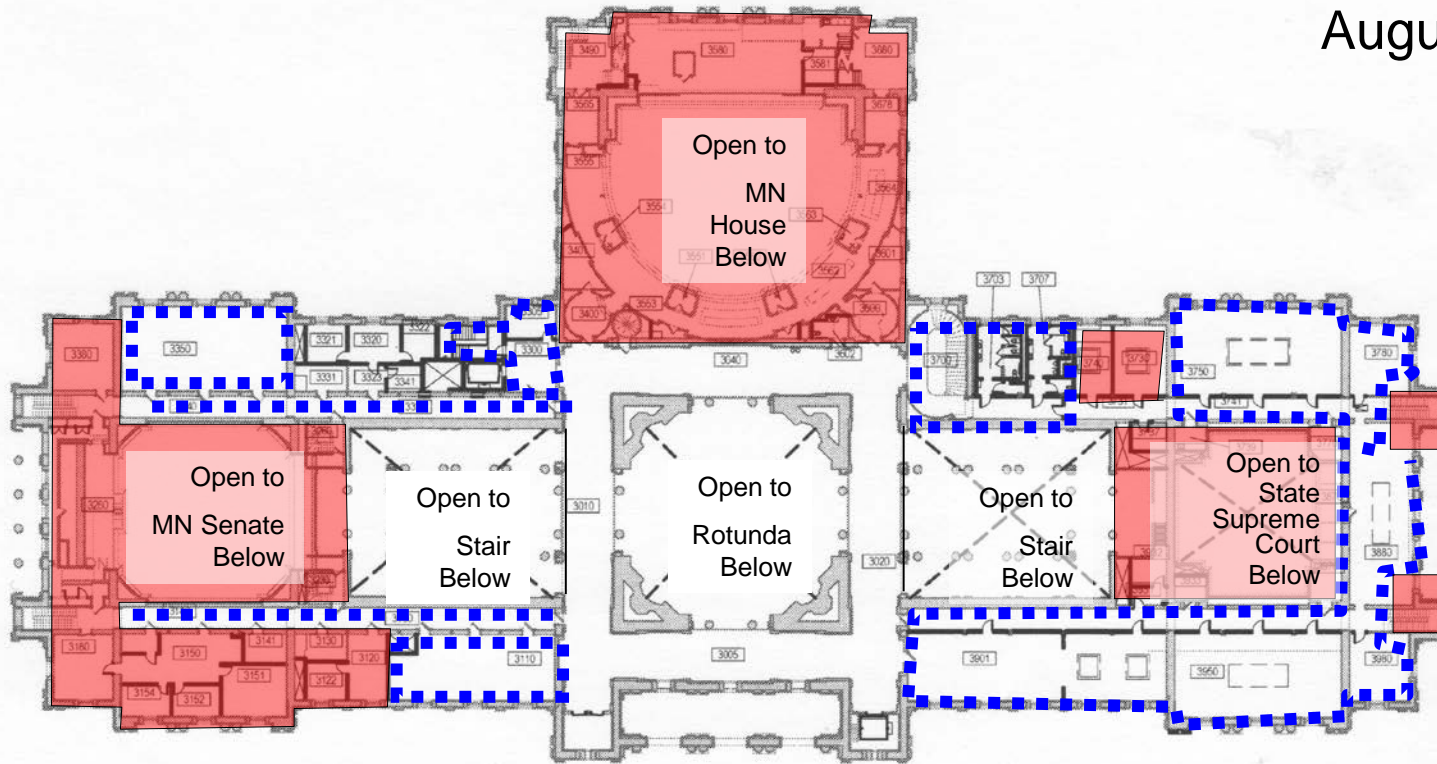








DRAFT  
August 3, 2015



## Open areas included in Art at the Capitol



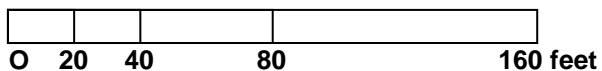
## Zone potentially included in Art at the Capitol



## Corridor potentially included in Art at the Capitol



## Zones not included



## ART ZONES AT THE CAPITOL

# MN Capitol Third Floor - # 3

# Minnesota State Capitol

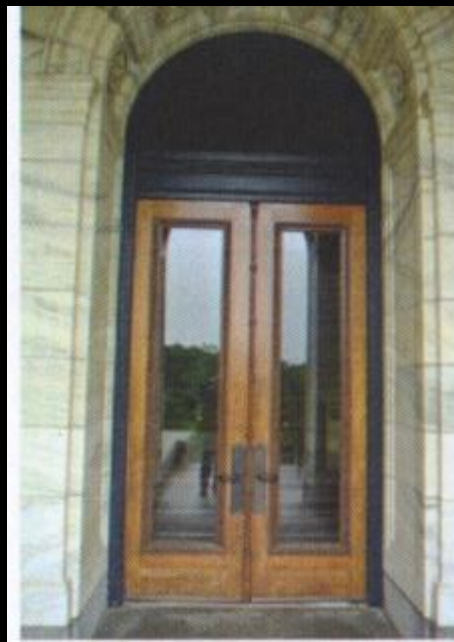
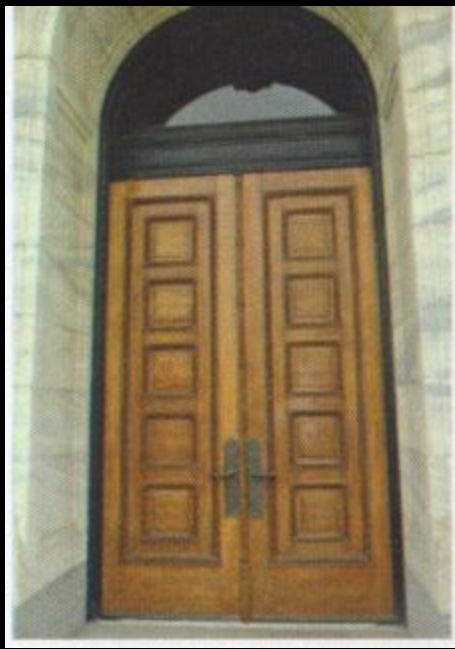
Thomas O'Sullivan –  
North Star State House



“The Minnesota State Capitol stands at the intersection of high ideas and everyday life. It is home to lofty discourse and petty argument, graceful allegorical paintings and tons of mundane paperwork.







Over 70  
Types of  
Doors  
at  
MN Capitol

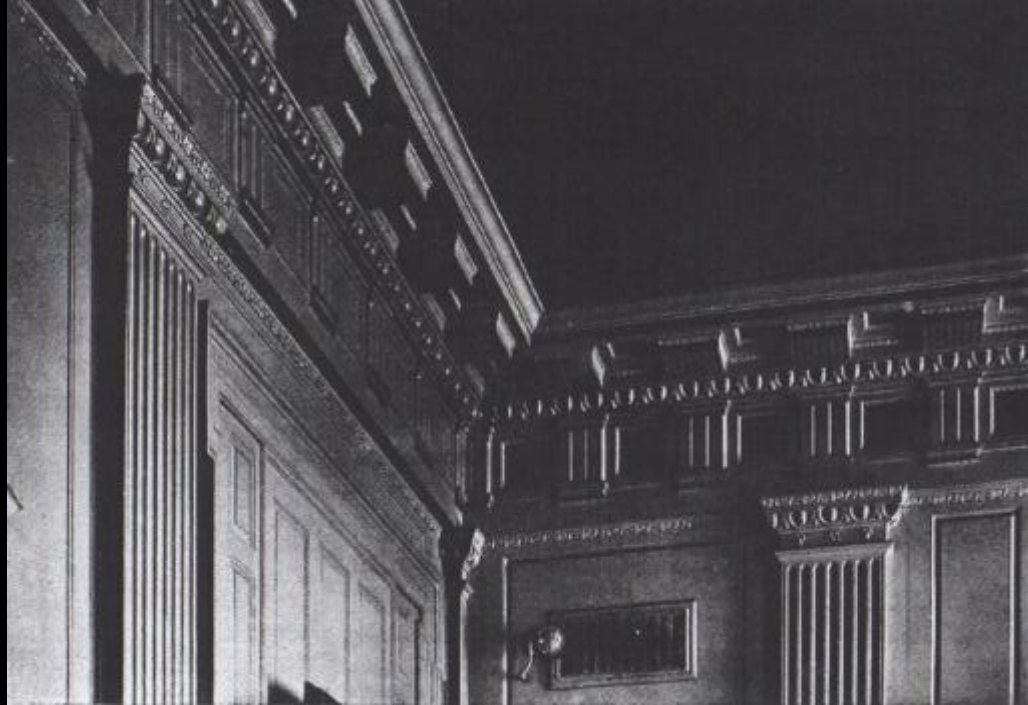












Decorative  
Plaster  
Moldings







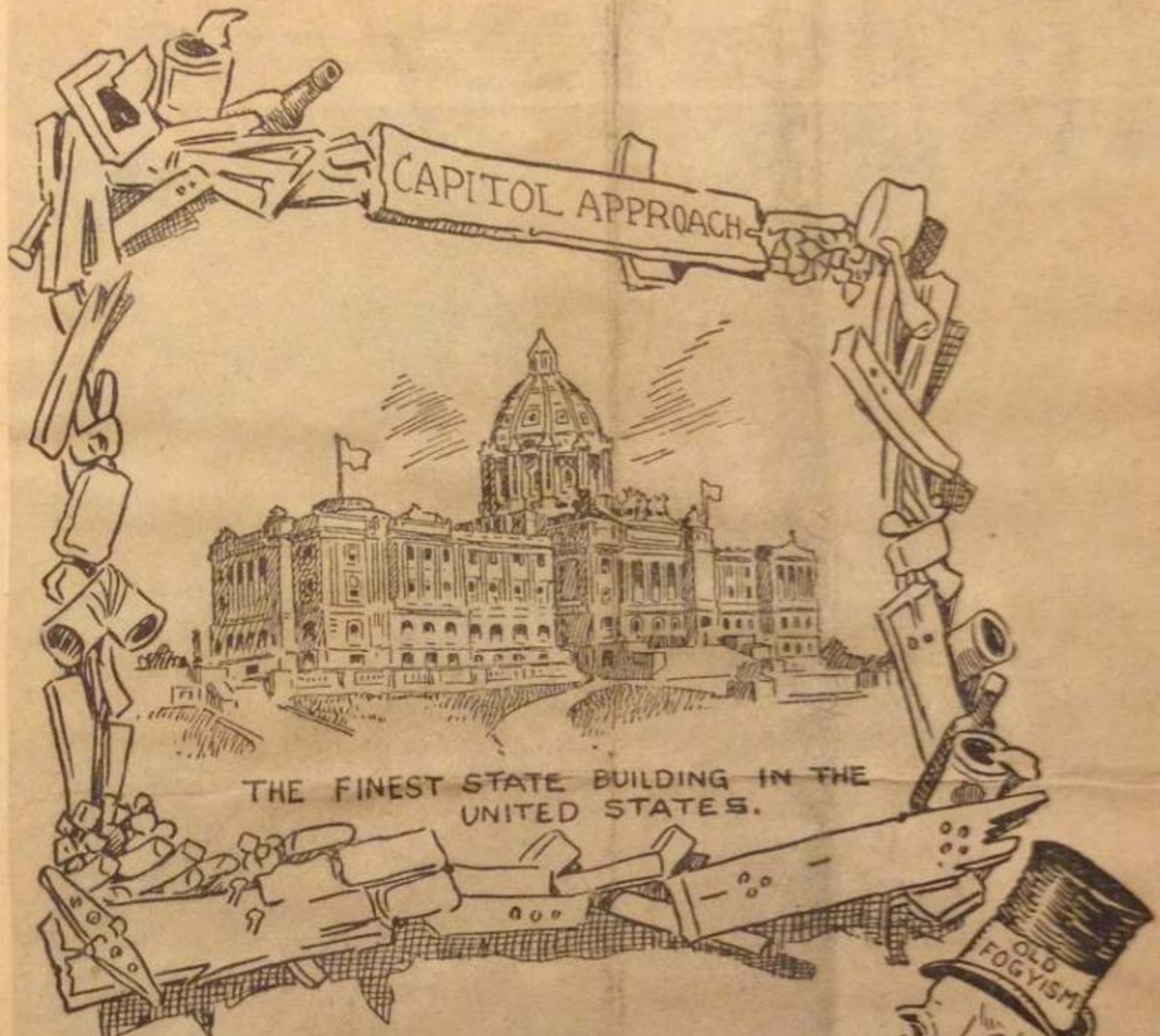


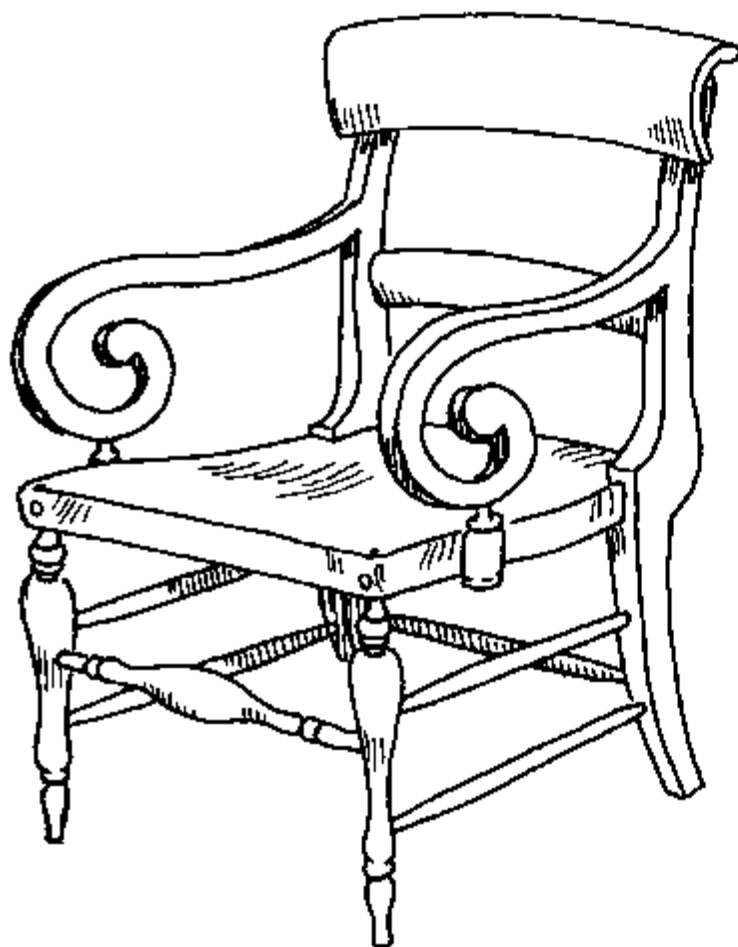




I DON'T SEE NOTHING THE MATTER WITH THAT FRAME.







STYLE: 473 ARMCHAIR

MAKER: Marble & Shattuck Chair Company, Cleveland, Ohio

MEASUREMENT: 90h x 51w x 46d

DESCRIPTION: The 473 oak chair has a wide rectangular top rail, curving in at the center, with a rounded upper edge. A second, smaller rectangular rail joins the midpoint of tapered stiles. The arms curve down from the tops of the stiles in a continuous loop, ending in a scroll at the side of the seat rail, where a drop finial joins the arms to the square, brown leather seat. The leather upholstery, covering the narrow seat rails, is supported by webbing only. The front legs are turned, while the plain, tapered rear legs flare out slightly. The front stretcher is turned and bulbous, while the back and double side stretchers are plain.

HISTORY: Purchased by Cass Gilbert for Law Library and Historical Society Reading Rooms in the Capitol

1905 ORDER: 59

1989 TOTAL: 19

LOCATION: 525 Park Building, 2nd Floor, Attorney General (1)  
American Center Building, 7th Floor, Public Service (3)  
Capitol, B40 (1) Capitol, B59 (1)  
Capitol, B60 (1)  
Fort Snelling, Site Manager's Office (1)  
James J. Hill House, 2nd Floor Office (4)  
Minnesota Historical Society, 690 Cedar Street, 2nd Floor, Publications (2)

*(continued on next page)*



Questions  
Comments



# Minnesota State Capitol

Thomas O'Sullivan – North Star State House – An armchair guide to the Minnesota State Capitol

“The Minnesota State Capitol stands at the intersection of high ideas and everyday life. It is home to lofty discourse and petty argument, graceful allegorical paintings and tons of mundane paperwork.

The building has served as Minnesota's statehouse since 1905. The old fashioned term suggest the dual requirements of a building that is central to the commonwealth. A statehouse has functional and symbolic duties. It needs sufficient size and working space to accommodate the executive, legislative, and judiciary branches of state government.

But a statehouse is more than square footage. It is the heart of civic life, and deserves a grandeur of expression that Minnesota's Capitol delivers in design, decoration, and craftsmanship. Its noble spaces and fine materials are reminders to anyone who enters- whether senator or school child- that this is a special place for important business.”