

UC23 – View / Maintain Contractor and View Energy Vendor Use Case
Specification

State of MN - eHEAT Phase III





Revision History

| Date | Version | Description | Author |
|------------|---------|--|----------------------|
| 02/22/2004 | DRAFT | Initial Version | Sivakumar Ramanathan |
| 02/23/2004 | 1.0 | Peer review complete with Narayan Srinivasan. Submitted for sign-off. | Sivakumar Ramanathan |
| 05/24/2004 | 1.1 | 4.2.3, 4.2.4: Changed "Save" button to "Submit" in Add/ Edit Contractor flows in order to synch up with screen mockups | Narayan Srinivasan |
| 08/04/2004 | 1.2 | Maintain contractor business rules added | Sam Chidambaram |



Table of Contents

| | | |
|-------|--------------------------------------|---|
| 1. | Brief Description | 4 |
| 2. | Actors | 4 |
| 3. | Activity Diagram | 4 |
| 4 | Flow of Events | 5 |
| 4.1 | Basic Flow | 5 |
| 4.2 | Alternate Flow | 5 |
| 4.2.1 | View Energy Vendor | 5 |
| 4.2.2 | Search Contractor | 5 |
| 4.2.3 | Add Contractor | 5 |
| 4.2.4 | Edit Contractor | 6 |
| 5 | Special Requirements | 6 |
| | Security: | 6 |
| 6 | Preconditions | 6 |
| 7 | Post conditions | 6 |
| 8 | Cross References: | 6 |
| 9 | Business Rules | 6 |

View / Maintain Contractor and View Energy Vendor

1. Brief Description

This use case provides a way to View / Maintain Contractor & View Energy Vendor.

2. Actors

Service Provider User

3. Activity Diagram

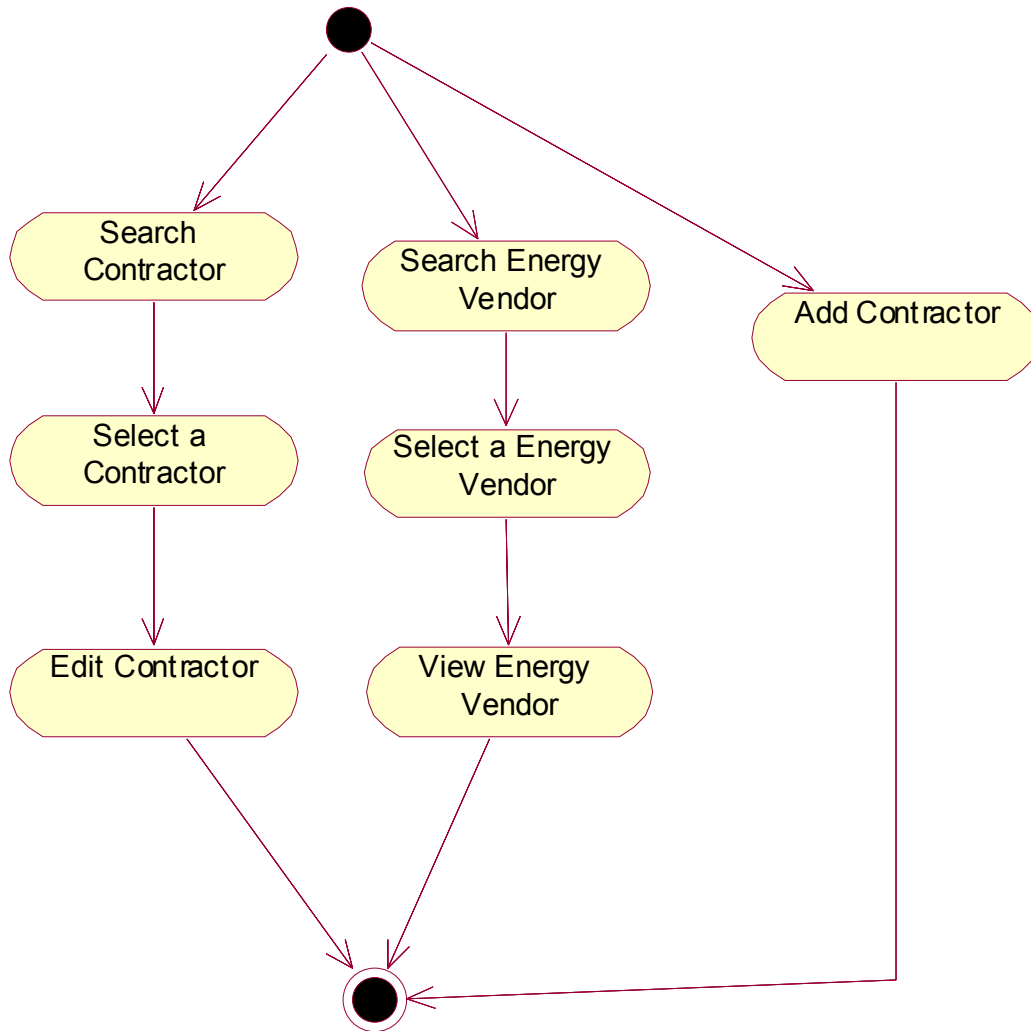


Figure 1 View/ Maintain Contractor and View Energy Vendor – Activity Diagram

4 Flow of Events

4.1 Basic Flow

4.1.1 Start of the Use Case

This use case starts when the user clicks on “Admin Services” Menu and clicks on “Energy Vendor” tab

4.1.2 Search Energy Vendor

1. The System displays the “Search Energy Vendor” screen. The user enters one or more search criteria and clicks on the “Search” Button to initiate a search.
2. If records are found, the system displays the Search results in a list. If no records are found, the system displays a message “No results found. Please select a different search criteria”.

4.1.3 Use Case Ends

This use case ends with the display of the search results.

4.2 Alternate Flow

4.2.1 View Energy Vendor

1. This use case starts after basic flow 4.1.1
2. The user selects an Energy Vendor from the list and clicks on the “View” button
3. The System displays the “Maintain Energy Vendor” screen as a view-only page
4. This alternative flow ends here.

4.2.2 Search Contractor

1. This use case starts when the user clicks on “Admin Services” Menu and clicks on “Contractor” tab
2. The System displays the “Search Contractor” screen. The user enters one or more search criteria and clicks on the “Search” Button to initiate a search.
3. If records are found, the system displays the Search results in a list. If no records are found, the system displays a message “No results found. Please select a different search criteria”.

4.2.3 Add Contractor

1. This use case starts when the user clicks on “Admin Services” Menu and clicks on “Contractor” tab
2. The System displays the “Search Contractor” screen.
3. The user clicks on the “Add” button.
4. The system displays the “Maintain Contractor” screen
5. The user enters the relevant information and clicks on the “Submit” button.
6. If successful the system will display a success message, or will display an error message
7. This alternative flow ends here.

4.2.4 Edit Contractor

1. This alternate flow starts after alternate flow 4.2.2
2. The user selects a Contractor from the list and clicks on the “Edit” button
3. The System displays “Maintain Contractor” screen
4. The user enters the relevant information and clicks on the “Submit” button.
5. If successful the system will display a success message, or will display an error message
6. This alternative flow ends here.

5 Special Requirements

Security:

| Actor | Function | Description |
|-----------------------|----------|-------------|
| Service Provider User | View | View ONLY |
| Service Provider User | Edit | Edit, View |

6 Preconditions

None

7 Post conditions

None

8 Cross References:

None

9 Business Rules

Energy Vendor

- Energy Vendor information can only be viewed and cannot be edited or added

Maintain Contractor

- Duplicate contractor id is not allowed within a service provider.
- Once created the contractor id is not allowed to modify.
- Contractor can be made inactive only if the contractor id is not used in open tasks or measures for a service provider.