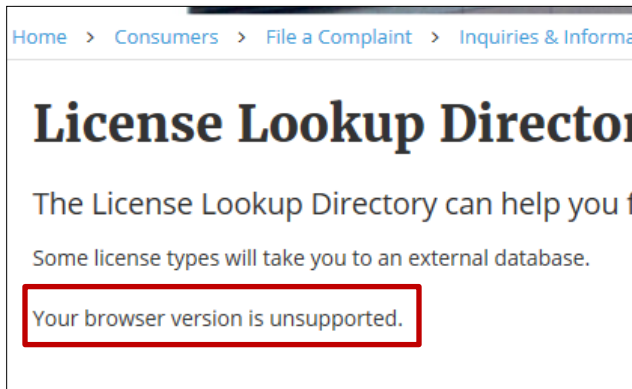


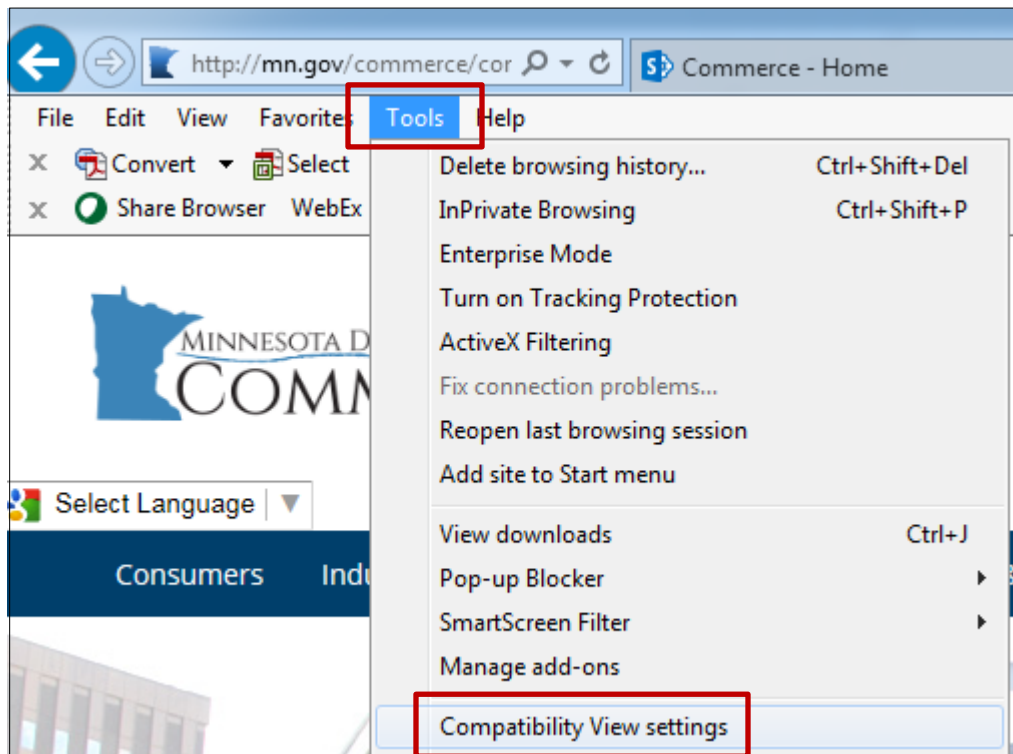
## Turn off compatibility mode

Having trouble seeing a form? Use the following steps to resolve the issue.

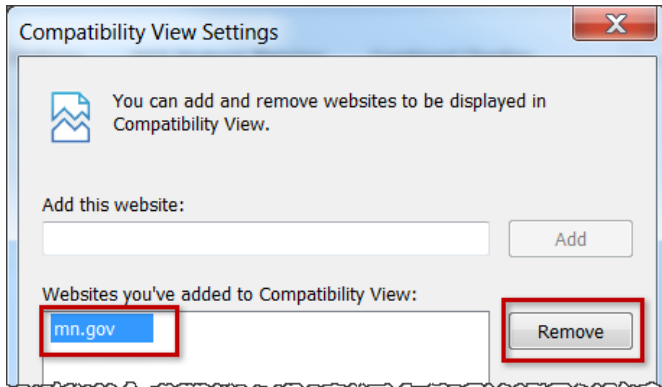


### Steps

1. **If you do not see the Tools menu, press ALT on your keyboard to show it.**
2. Open the **Tools** menu and click **Compatibility View settings**. If you do not see the **Tools** menu, press ALT on your keyboard to show it.



3. Look at **Websites you've added to Compatibility View**. If **mn.gov** is in the list, click once on it and then click **Remove**.



4. Click **Close**.
5. Close **all** Internet explorer tabs and windows.
6. Restart Internet Explorer.