

# Your Guide to ARE<sup>®</sup> 5.0

LAUNCHING NOVEMBER 1, 2016





# Your Guide to ARE<sup>®</sup> 5.0

## Preparing you for success—personally.

With ARE 5.0 launching on November 1, 2016,  
we know you're full of questions.

Which version of the exam will you take?

How should you plan your exam schedule?

What are the biggest changes headed your way?

Transitioning from ARE 4.0 to ARE 5.0 isn't a one-size-fits-all process. It's just as personal as your needs and circumstances. So rather than answer those questions for you, we're here to help you figure out what answers work best for you.

## Table of Contents

Understanding the Basics .....	4
New Question Types .....	6
Taking the Test .....	8
Making the Transition .....	10
Getting It Done .....	14
Planning Your Budget .....	15
FAQs .....	16
More Information .....	18

# Understanding the Basics

## What will ARE 5.0 look like?

The first step to planning your approach to ARE 5.0 is understanding what the new exam will look like.

The updated exam will do away with vignettes. Instead, we're featuring two new question types: hot spots and drag-and-place. Plus, we're adding in case studies. You can find detailed demonstrations of these new question types on our website at [ncarb.org/ARE5](https://ncarb.org/ARE5).

The exam is designed to make sure you're ready to practice architecture independently, so ARE 5.0 has been segmented into six divisions that more closely align with the current profession.

The divisions can be taken in whichever order suits you best—so you can plan to take them around your training and experience, take them all in a row, or do a little of both.

# ARE 5.0 Divisions

Practice Management

Project Management

Programming & Analysis

Project Planning & Design

Project Development  
& Documentation

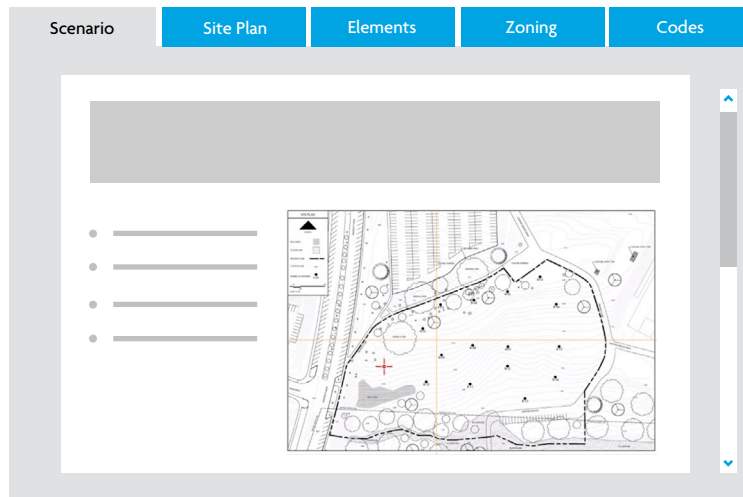
Construction & Evaluation

# New Question Types

For ARE 5.0, we'll be retiring vignettes in favor of two new question types: hot spots and drag-and-place, plus the addition of case studies. The exam will continue to use multiple choice, check-all-that-apply, and quantitative fill-in-the-blank.

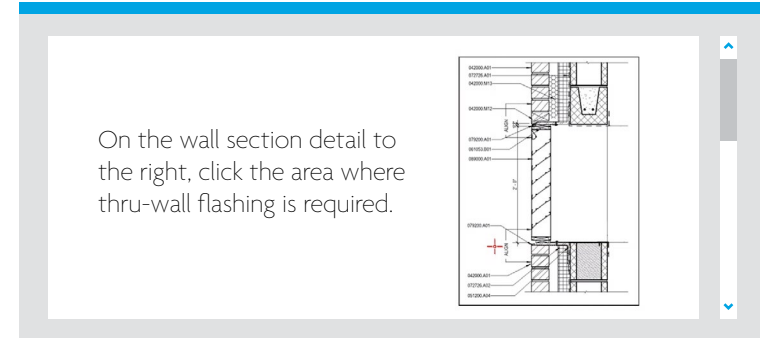
## Case Studies

Case studies evaluate your ability to combine several pieces of information—which is how architects solve problems on a daily basis. You'll answer a set of questions that relate to a scenario and the associated resources provided.



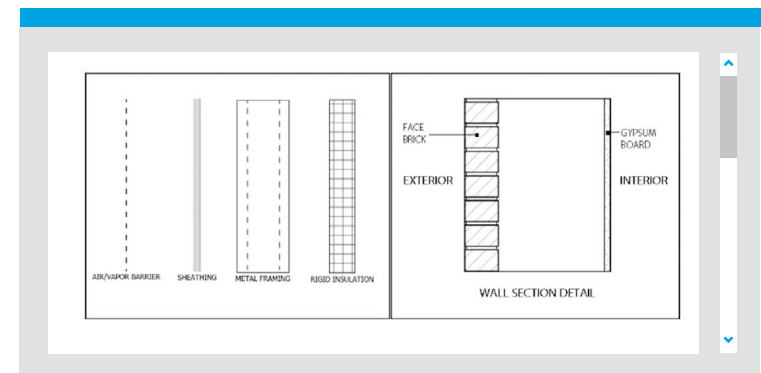
## Hot Spots

With hot spots, you'll be presented with an exhibit. To answer the question, you'll click the correct region on the exhibit.



## Drag-and-Place

For these questions, you'll be presented with a base drawing and a series of design elements. To answer these questions, simply drag the design elements to the correct region on the base drawing.



# Taking the Test

## How much time will I spend at the test center?

Like the current exam, each division includes an orientation, a break, and a post-exam survey. The total time varies, so here's how it breaks down in terms of questions and hours per division:

Division	Number of Questions	Test Duration	Appointment Time
Practice Management	80	2 hr 45 min	3 hr 30 mins
Project Management	95	3 hr 15 min	4 hr
Programming & Analysis	95	3 hr 15 min	4 hr
Project Planning & Design	120	4 hr 15 min	5 hr
Project Development & Documentation	120	4 hr 15 min	5 hr
Construction & Evaluation	95	3 hr 15 min	4 hr
<b>Total Time</b>		<b>21 hr</b>	<b>25 hr 30 min</b>

# Where will I take the exam?

You've put a lot of work into preparing for this exam, so we know you're curious about how to access it. Both ARE 4.0 and ARE 5.0 will continue to be administered at Prometric test centers.

We use these centers to keep the exam secure, but we know the finger-swiping and metal detector can seem a little intense.

## You must be ready to:



Present a valid photo ID with signature



Have your picture taken



Have your fingertip scanned



Be scanned by a metal detector before entering the testing room



Arrive at least 30 minutes early so you won't feel rushed

Check out our website for more information about the exact details of exam security so you'll be fully prepared.

# Making the Transition

## When will I switch to ARE 5.0?

One of the best parts of the new ARE 5.0 is that the timeline is (mostly) up to you—which means you can strategically plan your testing schedule around what works with your personal schedule.

The updated exam will launch on November 1, 2016, but ARE 4.0 will continue to be available until June 30, 2018—leaving you plenty of time to finish under the current model if that’s what’s best for you.

Making the jump to 5.0 does come with one major benefit: by using a combination of 4.0 and 5.0 divisions, you could potentially pass the ARE in as few as five tests. If you choose to “self-transition,” you can do so at the time that is most convenient for you after November 1—and the most beneficial.

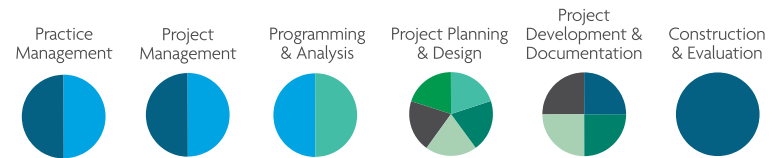
## How do I plan my transition?

Your goal of becoming an architect is in sight. With our helpful tools and resources, you can test your way through the ARE and earn your license as soon as possible. Start with our ARE 5.0 Credit Model. This map will show you how ARE 4.0 divisions correspond to ARE 5.0 divisions, so you know exactly how your passed exams will transfer once you make the switch.

[Continued on next page →](#)

### ARE 5.0 DIVISIONS

Use these columns to determine which ARE 4.0 division(s) you will need to pass to earn an ARE 5.0 credit.



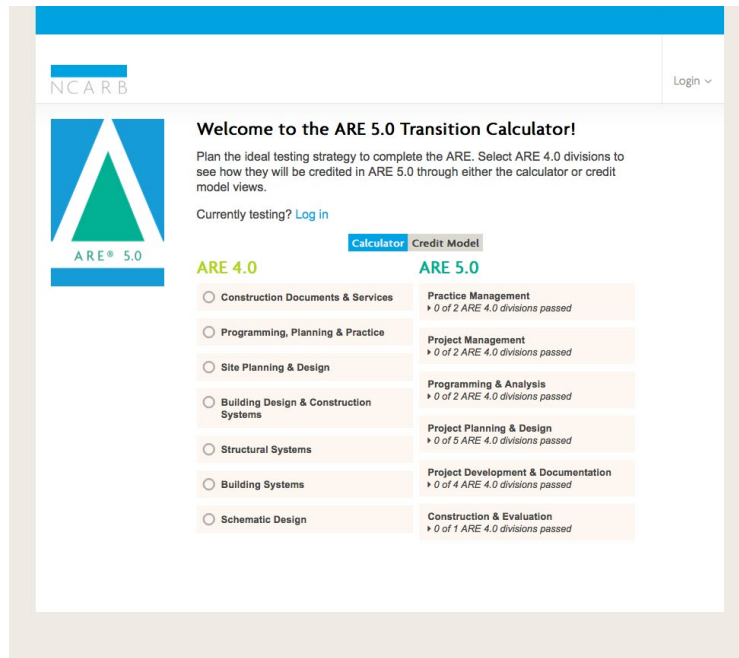
ARE 4.0 DIVISIONS	Practice Management	Project Management	Programming & Analysis	Project Planning & Design	Project Development & Documentation	Construction & Evaluation
Construction Documents & Services	●	●			●	●
Programming Planning & Practice	●	●	●			
Site Planning & Design			●	●		
Building Design & Construction Systems				●	●	
Structural Systems				●	●	
Building Systems				●	●	
Schematic Design				●		

### ARE 4.0 DIVISIONS

If you do not pass a division of ARE 4.0, use these rows to determine which ARE 5.0 division(s) you will need to complete.

... Making the Transition Cont.

Then, take a look at our [ARE 5.0 Transition Calculator](#). This interactive tool will allow you to explore different testing scenarios based on your current progress—showing you what you'll need to do to complete the ARE in 4.0, 5.0, or a combination of both. Just remember that once you transition to 5.0, you can't go back to 4.0. You can plan to transition at any point between ARE 5.0's launch on November 1, 2016, and ARE 4.0's retirement on June 30, 2018.



# Okay, but how do I pass the ARE in five divisions?

If you're looking to sit for as few tests as possible, complete your tests like this:

## Construction Documents & Services (CDS)

This will earn you one credit in ARE 5.0: Construction & Evaluation.

4.0

## Programming, Planning, and Practice (PPP)

Combined with CDS, this will earn you two additional credits in ARE 5.0: Practice Management and Project Management.

## Site Planning & Design (SPD)

Combined with PPP, this will earn you one additional credit in ARE 5.0: Programming & Analysis.

5.0

## Project Planning & Design (PPD)

This is one of the divisions you'll take in ARE 5.0. Before you transition, make sure to take a look at your rolling clock (and any other divisions you might have already passed) and see if making the switch to ARE 5.0 is right for your time constraints.

## Project Development & Documentation

This will complete your exam requirement in 5.0.

# Getting it Done

## What if I want to finish in ARE 4.0?

We want you to succeed, which is why we'll continue to offer all the same tools and resources to support ARE 4.0 until it's retired in 2018. You can find exam guides, study tips, inspirational success stories, and more on our website whenever you need them—including demo videos that will walk you through sample questions so you know exactly what to expect.

## And the best part? You're never alone.

Our ARE 4.0 Online Community (and our customer service team at 202/879-0520 or [customerservice@ncarb.org](mailto:customerservice@ncarb.org)) is always available to answer your questions and help you at every step along the way.



# Planning Your Budget

## How much is this going to cost?

Here's the good news: switching from ARE 4.0 to ARE 5.0 won't cost you any more money. The total cost of the exam will actually be less once ARE 5.0 launches on November 1, 2016. \$1,260 for ARE 5.0 versus \$1,470 for ARE 4.0. The cost per division will remain the same as ARE 4.0: \$210 per division. With less divisions, you'll spend less money.

By taking advantage of strategic testing and self-transitioning, you could end up saving more by taking as few as five divisions.





# FAQs

## Why update the ARE?

NCARB re-evaluates and updates the exam to ensure it continues to test all the skills you'll need for current architectural practice. The time had come to evolve to ARE 5.0 in order to support innovative graphic testing methods—making testing a more refined, relevant process.

## Why are the divisions changing?

Like the environment around us, architecture is constantly changing—and we want to keep up with it. The new division structure is designed to reflect the phases a project goes through from idea to construction, and will make sure that what you're tested on is an accurate representation of what you'll be doing once you're licensed. They also align with the Architectural Experience Program, so the path to licensure is more understandable.

## Who develops the ARE?

Hundreds of architects from across the country volunteer their services, expertise, and time to write, test, and analyze the ARE. In addition, we bring psychometricians (professionals in the world of testing and measurement) to the table to ensure the validity, reliability, and fairness of the exam meets national testing standards.

## When will ARE 5.0 launch?

ARE 5.0 will launch on November 1, 2016. We are currently in the final stages of exam development and administration.

## Will the Rolling Clock change?

The five-year Rolling Clock will remain the same, so be sure to pay attention to your expiration dates in My Examination. While taking five divisions may sound appealing, it may not be in your best interest to wait for ARE 5.0 and risk 4.0 exams expiring. Be strategic in how you approach your ARE 4.0 divisions and keep testing.

## Can I start testing in ARE 4.0 after ARE 5.0 has launched?

Yes—if you already have your eligibilities to test before ARE 5.0 launches. If you would like to start testing in ARE 4.0, you will need to receive eligibility to test as an ARE 4.0 candidate. You will be able to maintain those ARE 4.0 eligibilities until you finish the ARE or until June 30, 2018 (whichever comes first). If you request your eligibility to test after ARE 5.0 launches on November 1, 2016, you will receive ARE 5.0 eligibilities only.

## If I transition to ARE 5.0, can I switch back to ARE 4.0?

No. Candidates who begin testing in ARE 4.0 will have the option to “self-transition” to ARE 5.0. Once you receive your eligibilities for ARE 5.0, you cannot switch back to ARE 4.0.

## When will NCARB release more ARE 5.0 information like guidelines and exam guides?

Late July or early August. We've also developed an NCARB Blog series on the new divisions, so check out the blog for more information.

For more information on the ARE and the transition to **ARE 5.0**, visit:



[blog.ncarb.org](http://blog.ncarb.org)



[facebook.com/ncarb](https://facebook.com/ncarb)



[@ncarb](https://twitter.com/ncarb)



[youtube.com/ncarborg](https://youtube.com/ncarborg)



[ncarb.org/are4community](http://ncarb.org/are4community)

And subscribe to the ARE Update: [ncarb.org/subscribe](http://ncarb.org/subscribe)

## Notes

.....

.....

.....

.....

.....

.....

.....

.....

.....

.....

.....

.....

.....

.....

.....

.....

.....

.....

.....

.....

.....

.....

.....

.....

The National Council of Architectural Registration Boards protects the public health, safety, and welfare by leading the regulation of the practice of architecture through the development and application of standards for licensure and credentialing of architects.



LET'S GO FURTHER

National Council of Architectural Registration Boards  
1801 K Street NW, Suite 700K  
Washington, DC 20006

**[WWW.NCARB.ORG](http://WWW.NCARB.ORG)**